

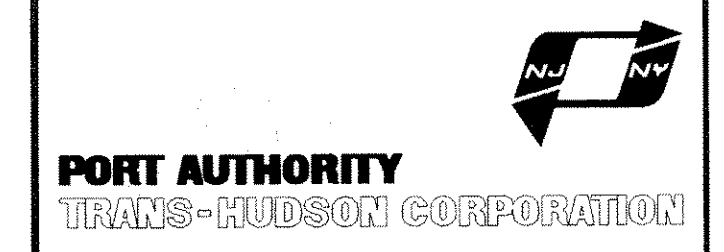
14

15

16

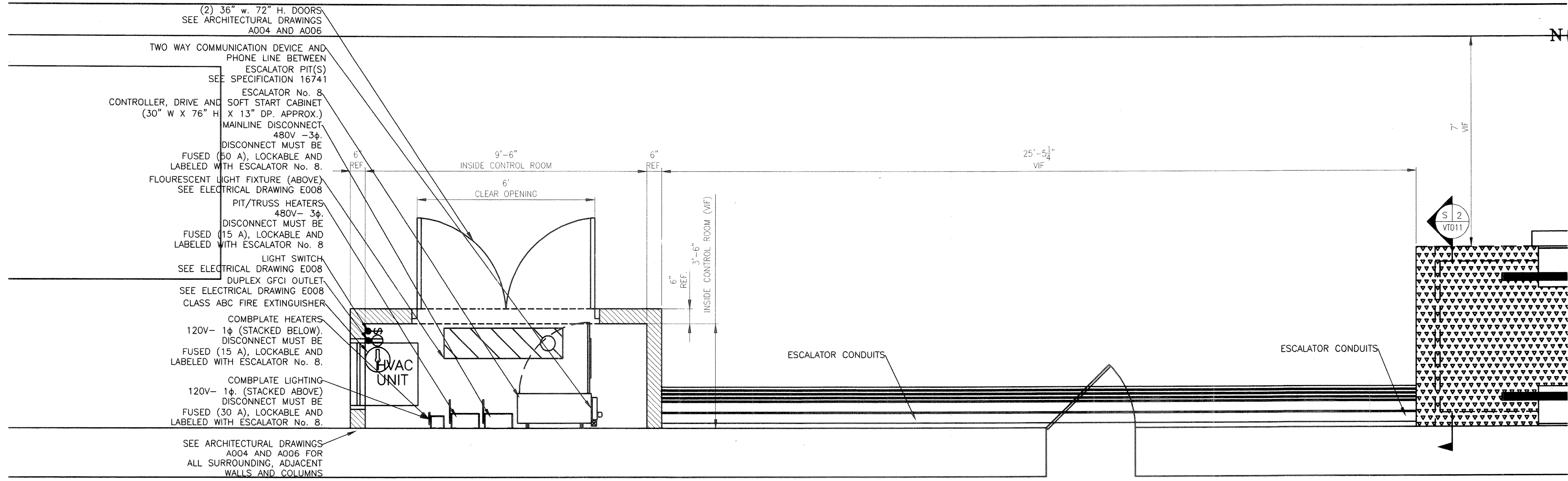
17

18



GANNETT FLEMING, P.C. ENGINEERS AND ARCHITECTS

JOHN D. PURDY
N.J. Professional Engineer # 246GE03967100



(2) 36" w. 72" H. DOORS
SEE ARCHITECTURAL DRAWINGS
A004 AND A006

TWO WAY COMMUNICATION DEVICE AND
PHONE LINE BETWEEN
ESCALATOR PIT(S)
SEE SPECIFICATION 16741

ESCALATOR No. 8
CONTROLLER, DRIVE AND SOFT START CABINET
(30" W X 76" H. X 13" DP. APPROX.)

MAINLINE DISCONNECT
480V - 3φ.
DISCONNECT MUST BE
FUSED (50 A), LOCKABLE AND
LABELED WITH ESCALATOR No. 8.

FLOURESCENT LIGHT FIXTURE (ABOVE)
SEE ELECTRICAL DRAWING E008

PIT/TRUSS HEATERS
480V - 3φ.
DISCONNECT MUST BE
FUSED (15 A), LOCKABLE AND
LABELED WITH ESCALATOR No. 8

LIGHT SWITCH
SEE ELECTRICAL DRAWING E008

DUPLEX GFCI OUTLET
SEE ELECTRICAL DRAWING E008

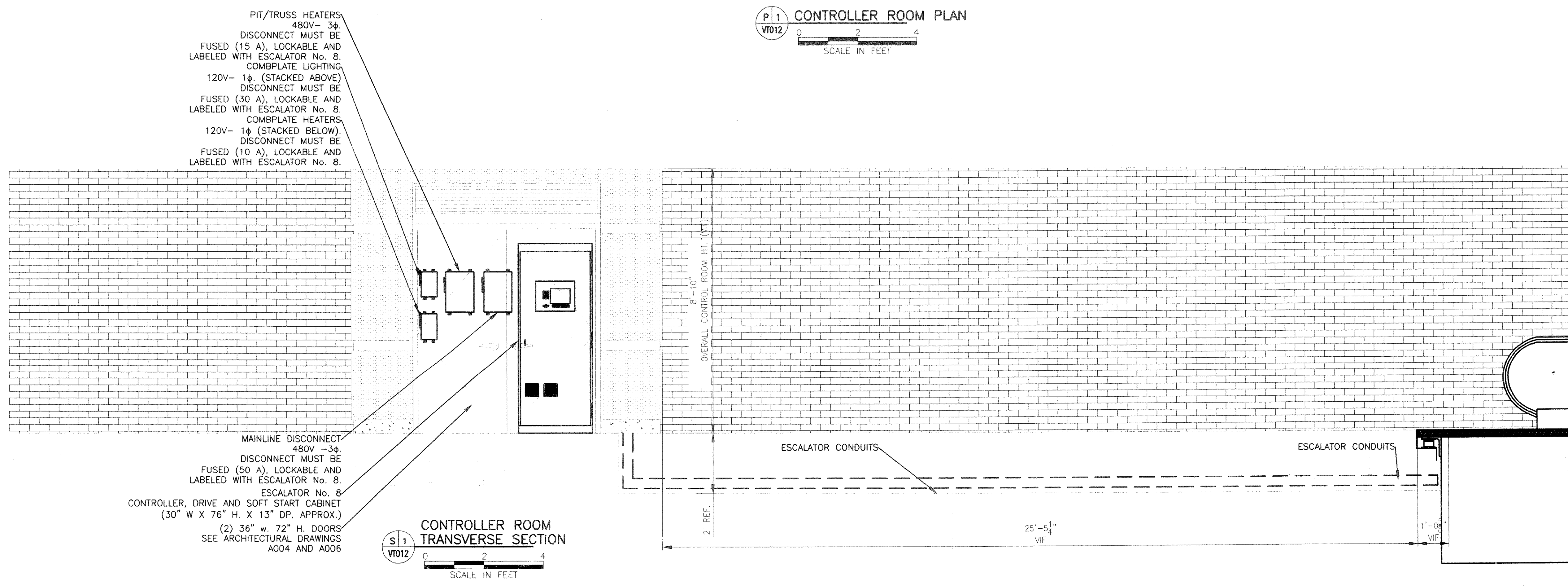
CLASS ABC FIRE EXTINGUISHER

COMBPLATE HEATERS
120V - 1φ (STACKED BELOW).
DISCONNECT MUST BE
FUSED (15 A), LOCKABLE AND
LABELED WITH ESCALATOR No. 8.

COMBPLATE LIGHTING
120V - 1φ (STACKED ABOVE)
DISCONNECT MUST BE
FUSED (30 A), LOCKABLE AND
LABELED WITH ESCALATOR No. 8.

SEE ARCHITECTURAL DRAWINGS
A004 AND A006 FOR
ALL SURROUNDING, ADJACENT
WALLS AND COLUMNS

P 1 CONTROLLER ROOM PLAN
VT012
SCALE IN FEET



PIT/TRUSS HEATERS
480V - 3φ.
DISCONNECT MUST BE
FUSED (15 A), LOCKABLE AND
LABELED WITH ESCALATOR No. 8.

COMBPLATE LIGHTING
120V - 1φ (STACKED ABOVE)
DISCONNECT MUST BE
FUSED (30 A), LOCKABLE AND
LABELED WITH ESCALATOR No. 8.

COMBPLATE HEATERS
120V - 1φ (STACKED BELOW).
DISCONNECT MUST BE
FUSED (10 A), LOCKABLE AND
LABELED WITH ESCALATOR No. 8.

MAINLINE DISCONNECT
480V - 3φ.
DISCONNECT MUST BE
FUSED (50 A), LOCKABLE AND
LABELED WITH ESCALATOR No. 8.

ESCALATOR No. 8
CONTROLLER, DRIVE AND SOFT START CABINET
(30" W X 76" H. X 13" DP. APPROX.)

(2) 36" w. 72" H. DOORS
SEE ARCHITECTURAL DRAWINGS
A004 AND A006

S 1 CONTROLLER ROOM
TRANSVERSE SECTION
VT012
SCALE IN FEET

No.	Date	Revision	Approved
ENGINEERING DEPARTMENT			
JOURNAL SQUARE TRANSPORTATION CENTER			
MECHANICAL			

Title
**BUS TERMINAL
ESCALATOR REPLACEMENT**

**ESCALATOR No. 8
ENLARGED
CONTROLLER ROOM
PLAN AND SECTION**

This drawing subject to conditions in contract as inventions, ideas, designs and methods herein are reserved to Port Authority and may not be used without its written consent.

All recipients of Contract documents, including bidders and those who do not bid and their prospective subcontractors and suppliers who may receive all or a part of the Contract documents or copies thereof, shall make every effort to ensure the secure and appropriate disposal of the Contract documents to prevent further disclosure of the information contained in the documents. Secure and appropriate disposal includes methods of document destruction such as shredding or arrangements with refuse handlers that ensure that third persons will not have access to the documents' contents either before, during, or after disposal. Documents may also be returned for disposal purposes to the Contract Desk on the 3rd Floor, 3 Gateway Center, Newark, NJ 07102, or the office of the Director of Procurement, One Madison Avenue, 7th Floor, New York, NY 10010.

S. STEINER S. STEINER S. FITZGERALD
Designed by Drawn by Checked by

Date 11/17/2008

Contract Number PAT-214.004

Drawing Number VT012
PID# 07957000