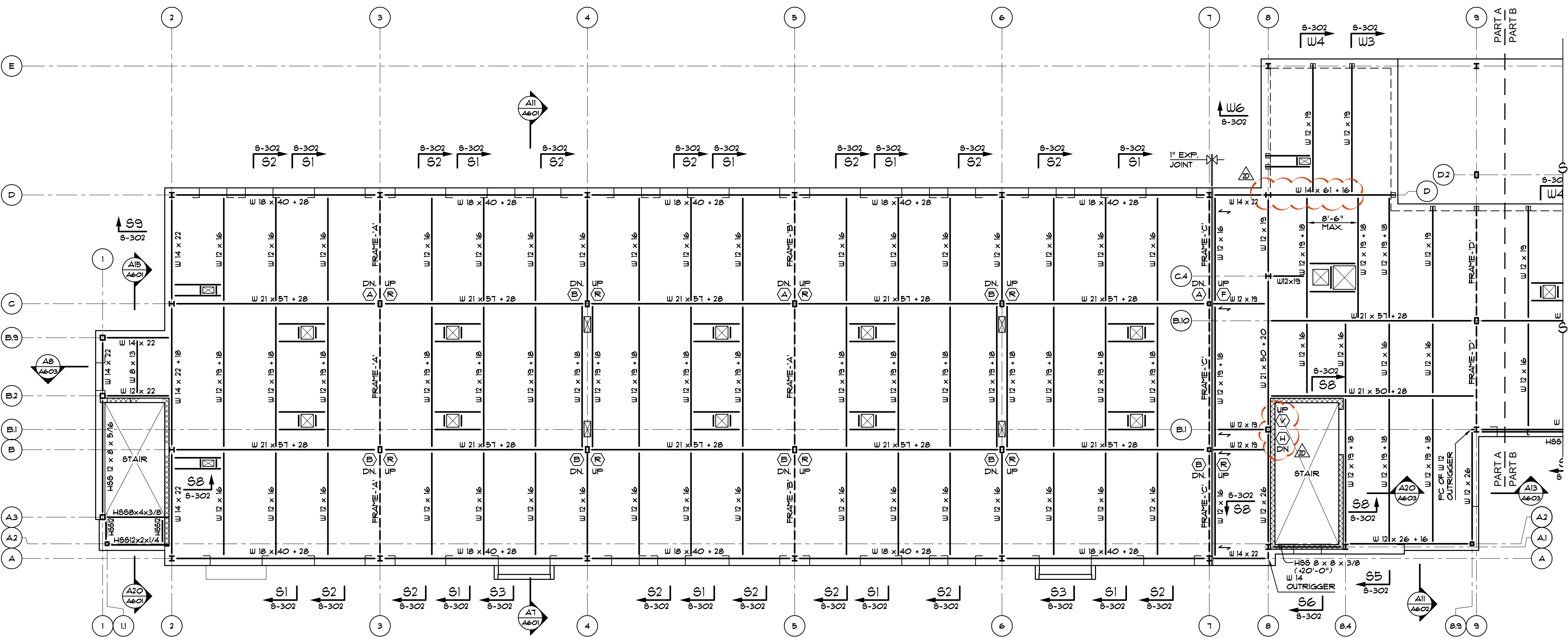


**THIRD FLOOR FRAMING PLAN**

ELEVATION TOP OF FINISHED FLOOR SLAB:  $+6'-8\frac{1}{2}''$  ABOVE DATUM  
 EL. 0'-0" UNLESS OTHERWISE NOTED ON PLAN.  
 FLOOR SLAB: 5 1/2" CONC. SLAB + 6x6-W14x14 WUF. ON 2'-0" GA.  
 COMPOSITE METAL FLOOR DECK (GALVANIZED).  
 ELEVATION TOP OF STEEL BEAMS:  $-5\frac{1}{2}''$  BELOW TOP OF SLAB UNLESS  
 OTHERWISE NOTED THIS ( ) ON PLAN ABOVE DATUM.  
 W 16 x 26 + 24 - INDICATES W 16 x 26 STEEL BEAM WITH (24) - 3/4" SHEAR STUDS.  
 SPACE ALL STEEL MEMBERS EQUALLY UNLESS OTHERWISE NOTED ON PLAN.  
 [ ] - INDICATES ELEVATION BOTTOM OR TOP OF IE AT BEAM + IE LINTEL  
 AND BOTTOM OF ANGLE AT BEAM + L & LINTEL. COORDINATE WITH ARCH. DUGS.  
 [ ] - INDICATES SLIDING CONNECTION.  
 [ ] - INDICATES MOMENT CONNECTION IN UNITS OF KIP/FT.  
 [ ] - INDICATES A WIND/SEISMIC MOMENT CONNECTION IN UNITS OF KIP/FT.  
 PROVIDE W 8 x 10 AT ALL MECHANICAL FLOOR OPENINGS UNLESS OTHERWISE NOTED.  
 COORDINATE SIZE & LOCATION OF ALL FLOOR OPENINGS w/ ARCH. & MECH. DUGS.



**Clarke Caton Hintz**  
 Architecture  
 Planning  
 Landscape Architecture  
 100 Barrack Street, Trenton, NJ 08638  
 Tel: (609) 833-8383, Fax: (609) 833-6044  
 www.clarkecatonhintz.com  
 Drawings Copyright ©2016 Clarke Caton Hintz, PC

OWNER:  
 WILLIAM PATTERSON UNIVERSITY  
 300 POMPTON RD.  
 WYINGE, NJ 07470  
 (973) 723-2000  
 SITE / CIVIL / GEOTECHNICAL:  
 LANGAN  
 300 KIMBALL DRIVE  
 PARSIPpany, NJ 07054  
 (973) 560-4900  
 STRUCTURAL:  
 HARRISON & HAMNETT  
 40 KNOWLES STREET  
 PENNINGTON, NJ 08634  
 (609) 818-1808  
 MECHANICAL/ELECTRICAL/PLUMBING:  
 FIRE PROTECTION  
 PARTNER ENGINEERING AND SCIENCE, INC.  
 611 INDUSTRIAL WAY WEST  
 EATONTOWN, NJ 07724  
 (732) 380-1700  
 HVAC & SECURITY  
 R.S. VANDERWEIL ENGINEERS, LLP  
 101 GROVERS MILL ROAD  
 QUAKERTOWN EXECUTIVE CENTER  
 LAWRENCEVILLE, NJ 08648  
 (609) 609.786.2727

SUBMISSIONS	
NO.	DATE DESCRIPTION
1	07/14/17 CONSTRUCTION DOCUMENTS
2	08/07/17 FINAL CONSTR. DOCUMENTS
REVISIONS	
NO.	DATE DESCRIPTION
20	09/08/17 ADDENDUM 6

**WILLIAM PATTERSON  
 UNIVERSITY  
 NEW RESIDENCE  
 HALL**  
 WAYNE, NEW JERSEY

CONSTRUCTION DOCUMENTS  
 (ISSUED FOR CONSTRUCTION)  
 DATE: 2017.08.07  
 SCALE: AS NOTED  
 DRAWN BY: RC  
 CHECKED BY: JNH

SHEET TITLE:  
 THIRD FLOOR FRAMING PLAN

Harrison & Hamnett, P.C.  
 Consulting Engineers  
 40 Knowles Street, Pennington, New Jersey 08634  
 Ph: 609-818-1808 No. 609-809-818-1809  
 JOHN N. HARRISON, N.J.P.E., #31198 DATE

DRAWING NO.:  
**S-103**  
 CCH PROJECT NO.: 1932