

Eng. No.	24627837500
Arch. No.	21AC00012400
Date	01/15/2018
Checked	RFL
Drawn	JAS

KEYED NOTES

- 1 REMOVE UNIT VENTILATOR AND ASSOCIATED, LOUVER, WALL SENSOR, CONTROL WIRING, AND HOT WATER PIPING.
- 2 REMOVE FINNED TUBE RADIATION AND ASSOCIATED WALL SUPPORTS, PIPING, WALL TEMP SENSOR, CONTROL WIRING, ETC.
- 3 REMOVE HWS/HWR PIPING, ASSOCIATED SUPPORTS, AND HANGERS, INCLUDING PIPING UPFEEDING UV'S ON 2ND FLOOR. TRACE EXISTING PIPING AND CAP AT NEAREST MAIN.
- 4 REMOVE CEILING GRILLE AND ASSOCIATED DUCTWORK.
- 5 REMOVE DUCTWORK AND CAP MAIN.
- 6 REMOVE REGISTER AND RETAIN DUCTWORK.
- 7 REMOVE CONVECTOR AND ALL ASSOCIATED CONTROL, PIPING AND SUPPORTS. CAP PIPING AT MAIN.

KENNETH H. KARLE, R.A.
REGISTERED ARCHITECT
License No. NJ21AD0890600

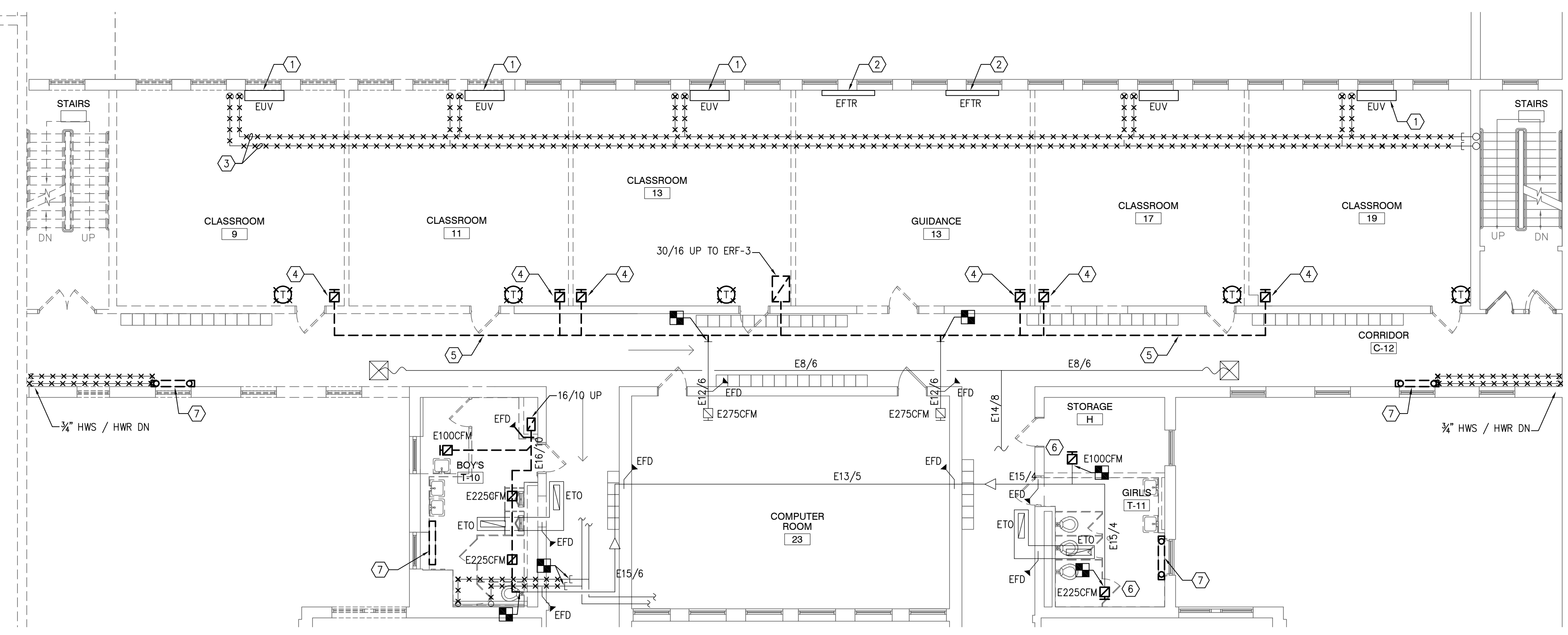
Revisions:

LAN ASSOCIATES
engineering • planning • architecture • surveying
445 GODWIN AVENUE, MIDLAND PARK, N.J. 07432 (201)447-6400

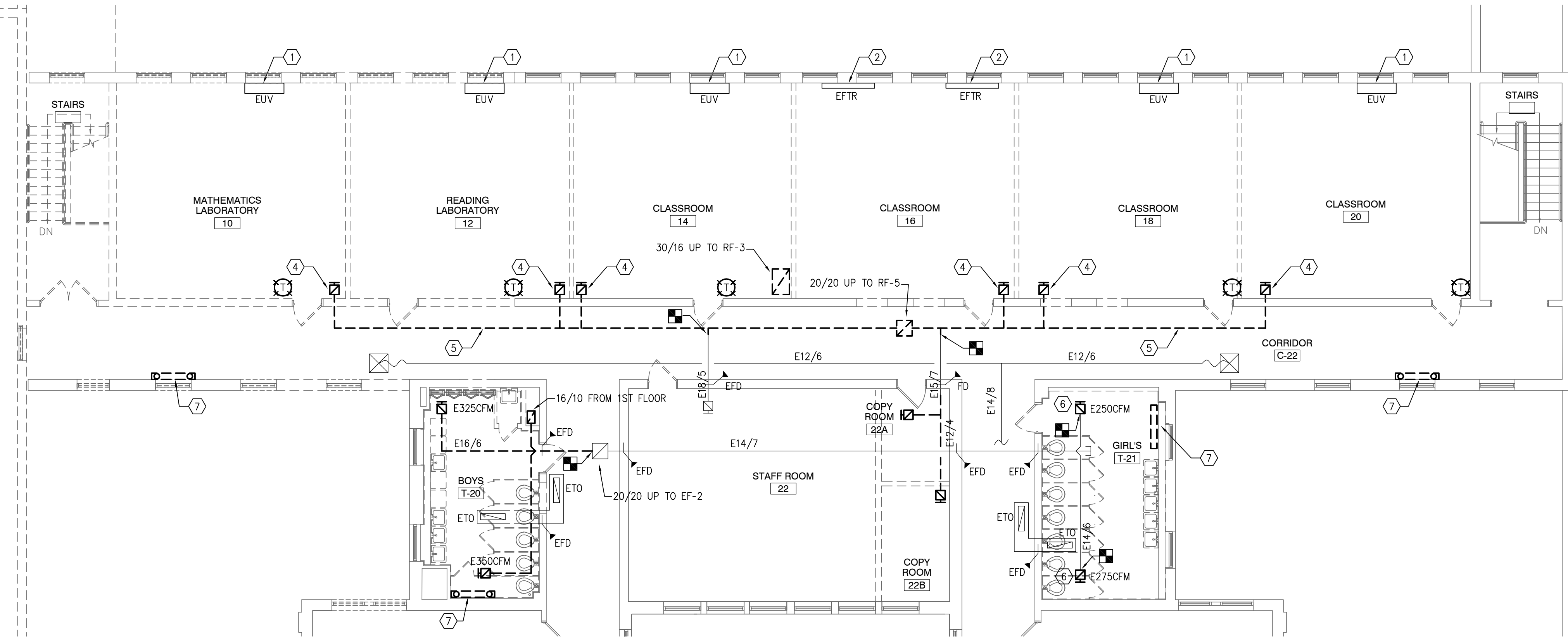
HVAC 1st & 2nd FLOOR REMOVALS PLAN
ADDITION TO WOODBRIDGE MIDDLE SCHOOL
WOODBRIDGE BOE
525 BARRON AVENUE
WOODBRIDGE, NJ 07095

Job No. 2.20211.07
File No. -

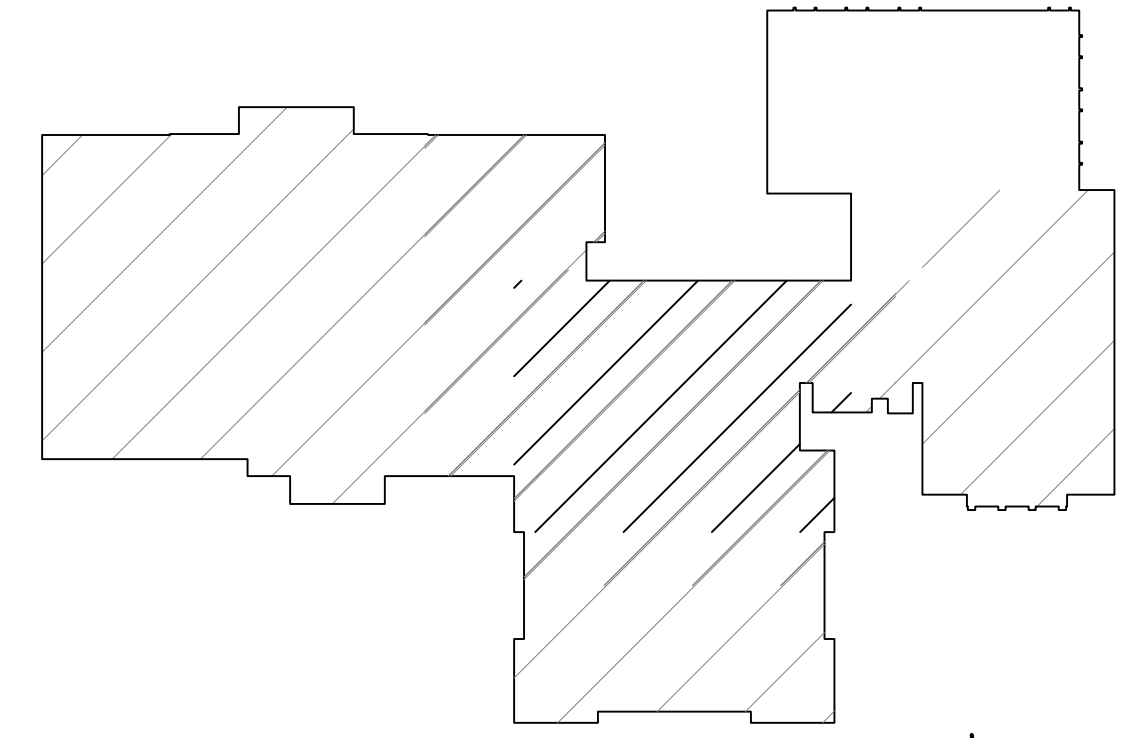
HR04



1 HVAC FIRST FLOOR REMOVALS PLAN
HR04 1/8" = 1'-0"



1 HVAC SECOND FLOOR REMOVALS PLAN
HR04 1/8" = 1'-0"



KEY PLAN
N.T.S.

