

GENERAL NOTE:

1. CONTRACTOR SHALL BE RESPONSIBLE TO CORE DRILL EXISTING FLOOR SLAB TO FACILITATE INSTALLATION OF NEW FLOOR OUTLET.
2. POWER AND DATA FLOOR OUTLETS AND FURNITURE WHIPS SHALL BE PROVIDED BASED ON COORDINATION WITH THE OWNER.
3. COORDINATE ALL POWER OUTLETS WITH VOICE, DATA & AV OUTLETS FOR PROPER PLACEMENT. COORDINATE POKE THRU FOR POWER WITH VOICE & DATA.

SHEET NOTES:

- ① TRANSFORMER FOR WATER CLOSETS AND URINALS FLUSHOMETER SUPPLIED BY PLUMBING CONTRACTOR. MOUNT ABOVE CEILING.
- ② 3P-30A DISC. SW IN NEMA-1 ENCLOSURE.
- ③ 2P-30A DISC. SW IN NEMA-1 ENCLOSURE.
- ④ PROVIDE ONE 1P-20A CIRCUIT BREAKER IN AVAILABLE SPACE IN PANEL RPEG, 10KAIC RATING.
- ⑤ 2P-30A DISC. SWITCH IN NEMA-3R ENCLOSURE.
- ⑥ CONTRACTOR SHALL PROVIDE NEW WRING AND CIRCUIT TO PANEL AS INDICATED. REUSE EXISTING CONDUIT IN WALL AND BACK BOXES. PROVIDE NEW RECEPTACLES AND COVER PLATES.
- ⑦ CONTRACTOR SHALL BE CAREFUL WITH RECIRCUITING ALL ELECTRICAL POWER OUTLETS TO MINIMIZE SHUTDOWN OF VOICE/DATA SYSTEMS. COORDINATE ALL WORK WITH UCC IT DEPARTMENT.
- ⑧ ALL RECEPTACLES AT EXTERIOR GLASS STOREFRONT WALL SHALL BE LOCATED HORIZONTAL ON THE EXISTING BASE, REFER TO, AND COORDINATE WITH ARCHITECTURAL DRAWING A-304.
- ⑨ CONTRACTOR SHALL FIELD VERIFY FOR EXACT QUANTITY AND TYPE OF WRING IN CONDUITS, PROVIDE A PULL BOX IN CEILING AND EXTEND THE WRING TO FACILITATE RELOCATION OF THE PANELS. RETAIN SERVICES OF BUILDINGS INTRUSION ALARM CONTRACTOR FOR INTRUSION ALARM WORK.

1 FIRST FLOOR PLAN - POWER
 E-202 SCALE: 1/8" = 1'-0"

PRIVATE OFFICE POWER LOCATIONS

TMG REF DWG: 108813_1-1stFlr.dwg
 UNION COUNTY COLLEGE
 LESSNER FIRST FLOOR ADDITION &
 FIRST FLOOR & LOWER LEVEL
 REHABILITATION
 12 WEST JERSEY STREET
 ELIZABETH, NJ 07202

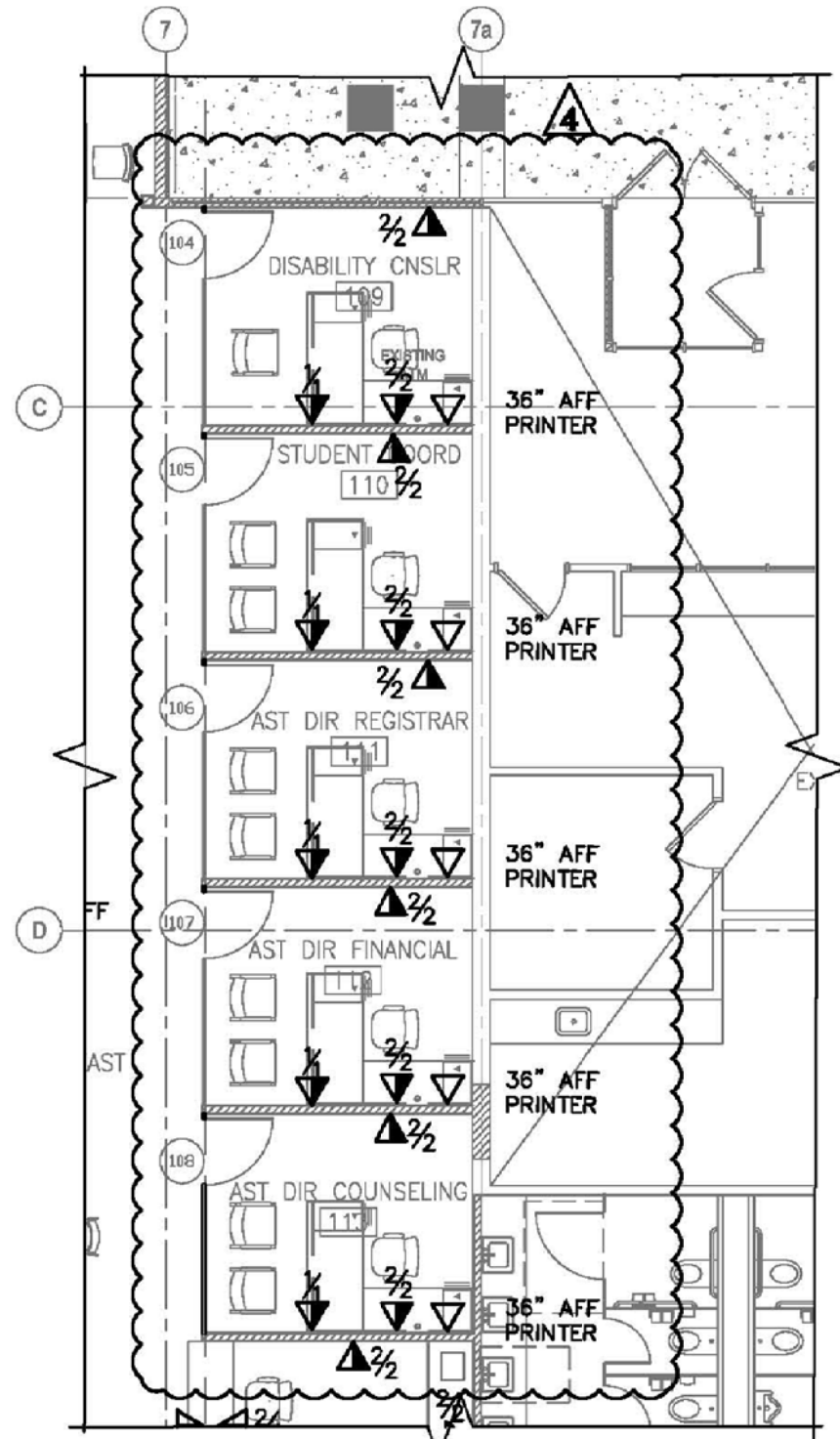
12/28/16

Project # 108813

SCALE: N.T.S

SK-60A

191 Mill Lane Mountainside, NJ 07092 p. 908.232.2860 f. 908.232.2845



GENERAL NOTES:

1. ALL STATION CABLES FOR VOICE AND DATA OUTLETS ON THIS FLOOR SHALL BE WIRED TO LOWER LEVEL DATA EQUIPMENT ROOM. CONTRACTOR SHALL COORDINATE FINAL TERMINATION WITH UCC IT DEPARTMENT.
2. REFER TO DRAWING E-203 FOR FURTHER DETAILS AND SPECIFICATIONS OF VOICE & DATA SYSTEMS.
3. COORDINATE INSTALLATION OF ALL VOICE & DATA CABLES AT FURNITURE WITH FURNITURE VENDOR AND UCC IT DEPARTMENT BEFORE INSTALLATION AND TERMINATION.
4. POWER AND DATA FLOOR OUTLETS AND FURNITURE WHIPS SHALL BE PROVIDED BASED ON COORDINATION WITH THE OWNER.

SHEET NOTES:

- ① ALL VOICE/DATA OUTLETS AT EXTERIOR GLASS STOREFRONT WALL SHALL BE LOCATED HORIZONTAL ON THE EXISTING BASE, REFER TO AND COORDINATE WITH ARCHITECTURAL DRAWING A-304.
- ② COORDINATE EXACT LOCATION WITH FURNITURE/MILLWORK ON ARCHITECTURAL DRAWINGS.
- ③ REFER TO VOICE/DATA RISER DIAGRAM E-402 FOR NEW COPPER RISER AND FIBER OPTIC RISERS FROM FROM DATA EQUIPMENT ROOM L14 TO IDF CLOSETS ON EACH FLOOR. PROVIDE NEW CORE DRILL PENETRATIONS ON EACH FLOOR.

1 FIRST FLOOR PLAN – LOW VOLTAGE
E-302 SCALE: 1/8" = 1'-0"

PRIVATE OFFICE LOW VOLTAGE LOCATIONS

TMG REF DWG: 108813_1-1stFlr.dwg
 UNION COUNTY COLLEGE
 LESSNER FIRST FLOOR ADDITION &
 FIRST FLOOR & LOWER LEVEL
 REHABILITATION
 12 WEST JERSEY STREET
 ELIZABETH, NJ 07202

12/28/16
 Project # 108813
 SCALE: N.T.S
SK-60B