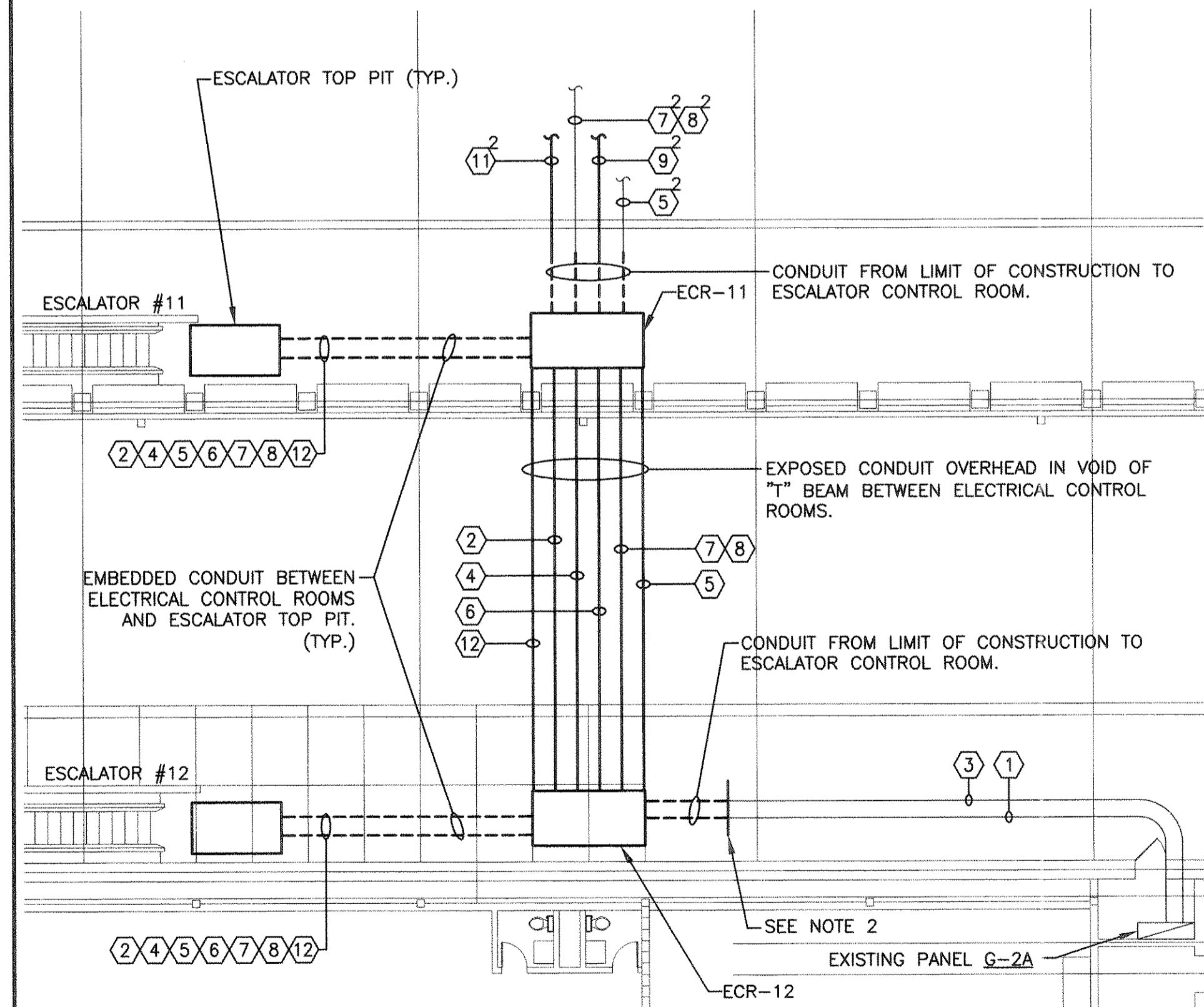


P 1 BUS LEVEL ELECTRICAL PLAN
E004
SCALE IN FEET 0 32 64



D 2 BUS LEVEL CONDUIT DETAIL
E004
SCALE IN FEET 0 12 24

CONDUIT NUMBER	CABLE TYPE	QTY AS NOTED	CONDUIT		CABLE			REMARKS
			SIZE	TYPE	NUMBER & SIZE	INSULATION	VOLTS	
1	A	-	2"	RGS	(3)#6, (1)#6 GND	THWN	600V	SEE NOTE 2
2	A	-	1"	RGS	(3)#8, (1)#8 GND	THWN	600V	SEE NOTE 3
3	B	-	1"	RGS	(3)#10, (1)#10 GND	THWN	600V	SEE NOTE 2
4	B	-	3/4"	RGS	(3)#10, (1)#10 GND	THWN	600V	SEE NOTE 3
5	C	-	1"	RGS	(3)#10, (1)#10 GND	THWN	600V	SEE NOTE 4
6	C	-	3/4"	RGS	(3)#10, (1)#10 GND	THWN	600V	SEE NOTE 3
6A	C	-	3/4"	RGS	(2)#12	THWN	600V	SEE NOTE 10
7	1	-	1"	RGS	WEST PENN #60975B #18 T.S.P. (OR EQUAL)	-	-	SEE NOTE 11
8	2	-	1"	RGS	WEST PENN #60993B #14 T.P. (OR EQUAL)	-	-	SEE NOTE 11
9	FO	-	AS NOTED	RGS	12 STRAND FIBER 6215/125 MICRON	-	-	SEE NOTE 5
10	ETHER	-	AS NOTED	RGS	CAT 5E CABLE	-	-	SEE NOTE 7
11	D	-	1"	RGS	(2)#10, (1)#10 GND	THWN	600V	SEE NOTE 6
12	E	-	AS NOTED	RGS	1-4PR #24 CAT 5E	-	-	SEE NOTE 7
13	E	-	1"	RGS	(3)#8, (1)#8 GND	THWN	600V	SEE NOTE 7
14	E	-	1-1/4"	RGS	(3)#4, (1)#8 GND	THWN	600V	SEE NOTE 7
15	ETHER	-	1"	RGS	CAT 5E CABLE	-	-	SEE NOTE 7

NOTES:

- FOR LEGEND, ABBREVIATIONS, AND GENERAL NOTES REFER TO CONTRACT DRAWING E001.
- CONDUITS 1 AND 3 ARE EXISTING EMBEDDED CONDUITS TO BE REUSED TO SUPPLY 277/480V POWER FROM PANELS G-1A, G-2A, G-3A AND G-4A TO THE ADJACENT ESCALATORS FOR POWER AND TRUSS HEATERS.
- CONDUITS 2 AND 4 ARE EXPOSED CONDUITS BETWEEN ADJACENT ELECTRICAL CONTROL ROOMS FOR MOTOR AND TRUSS HEATER CIRCUITS.
- CONDUIT NUMBER 5 IS EXISTING FROM EXISTING PANEL ECB-1 TO ESCALATOR TOP PITS. THE CONDUIT SHALL ROUTE TO THE ESCALATOR CONTROL ROOM ADJACENT TO ESCALATORS 5, 6, 7, 8, 9, 10, 11, AND 12.
- CONDUIT NUMBER 9 IS CONDUIT FOR FIBER CABLE FROM ESCALATOR CONTROL ROOMS FOR ESCALATORS 5, 6, 7, 8, 9, 10, 11, 12, 13 AND 14 TO ESCALATOR REMOTE MONITORING SYSTEM. SEE E005.
- CONDUIT NUMBER 11 IS ELECTRICAL CONTROL ROOM PANEL A/C UNIT BRANCH CIRCUITS FOR ESCALATORS 5, 6, 7, 8, 9, 10, 11 AND 12.
- CONDUIT NUMBER 12 IS FOR THE STAND ALONE VOICE ACTIVATED TELEPHONE SYSTEM LOCATED IN ELECTRICAL CONTROL ROOMS, UPPER PIT AND LOWER PIT OF ESCALATORS 5, 6, 7, 8, 9, 10, 11 AND 12. SEE SPEC SECTION 16741.
- SEE CONTRACT DRAWING E008 FOR PRE-CAST 'T' BEAM CONDUIT HANGER DETAIL.
- SEE GENERAL NOTE 22 ON CONTRACT DRAWING E001.
- SIGNAL FROM SUMP HIGH LEVEL TO ESCALATOR CONTROLLER.
- CONDUITS NUMBER 7 AND 8 ARE EXISTING FROM LIMIT OF ESCALATOR CONSTRUCTION TO CONTRACTOR INSTALLED PANEL FASP ON CONCOURSE LEVEL.