

THE MUSIAL GROUP ARCHITECTURE

191 Mill Lane
Mountainside, NJ 07092
P. 908.232.2860
F. 908.232.2845
E. studio@themusialgroup.com
W. www.themusialgroup.com

TRANSMITTAL

To: Hall Building Corporation
33 Main Street
Farmingdale, NJ 07727
Attention: Clint Hall

From: Sara MacDonald

Cc: Robert Hogan, Jon Colburn, Noel S. Musial, Noel Musial II, Jessica Tilburn, Yessika Morales-Diaz, Joseph Dick, Kelly Kenny

Date: 10/21/16

Project Number: 108813.00

Project Title: UCC Lessner Building 1st Floor Addition & 1st Floor & Lower Level Rehabilitation

Via: Email

Remarks: Please find the attached SK drawings regarding the Toilet Rooms at the Lower Level and First Floor. To ensure Hall is working with the current plans, I am resending the SK's re Toilet Rooms Lower Level and First Floor along with three revised per Wednesday's meeting as a package.

I have sent you all but 3 previously. Two plans were revised per Wednesday's site meeting and another added. I have added SK-022H to show demolition at the Fire Cabinet near WTR L10. SK-031 R is revised per this demolition. SK-022B R2 has been revised to add Wall Type 4 between Student Accts 114 and WTR 116 to accommodate sinks at WTR116.

We will issue the full plan sheets next week.

If you have any questions, please let me know.

Enc.

SK-022 R LOWER LEVEL ENLARGED TOILET ROOMS PLAN 11X17

SK-022A LOWER LEVEL TOILET ROOM ELEVATIONS 11 X 17

SK-022B R2 PARTIAL FIRST FLOOR PLAN 11 X 17 (*revised per site mtg. 10/19/16*)

SK-022C R FIRST FLOOR ENLARGED TOILET ROOMS PLAN 11 X 17

SK-022G PARTIAL ROOF PLAN 8.5 X 11

SK-022H PARTIAL DEMO PLAN LOWER LEVEL 8.5 X 11 (*new per site mtg. 10/19/16*)

SK-022E_M101 PARTIAL LOWER LEVEL MECHANICAL PLAN 8.5 X 11

SK-022F_M102 PARTIAL FIRST FLOOR MECHANICAL PLAN 8.5 X 11

SK-031 R LOWER LEVEL PLAN AT FIRE STANDPIPE AND CABINET 8.5 X 11 (*revised per site mtg. 10/19/16*)

SK-031A LOWER LEVEL PLANS DRINKING FOUNTAINS

Thank you.

DWG REFERENCE A421

UCC LESSNER BUILDING - ELIZABETH CAMPUS FIRST FLOOR & LOWER LEVEL RENOVATION

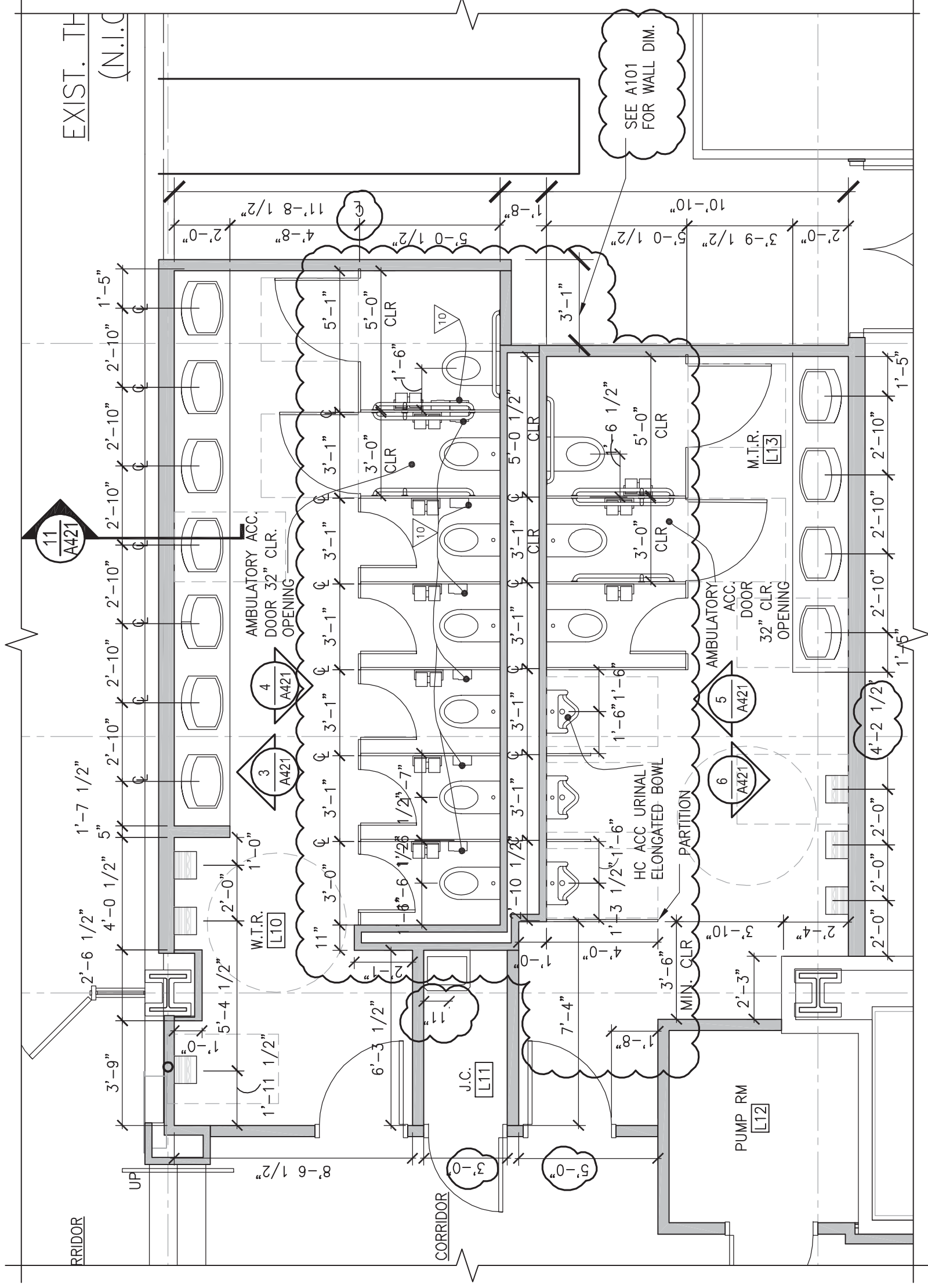
12 West Jersey Street
Elizabeth, NJ 07202

17 OCTOBER 2016

Project # 108813.00

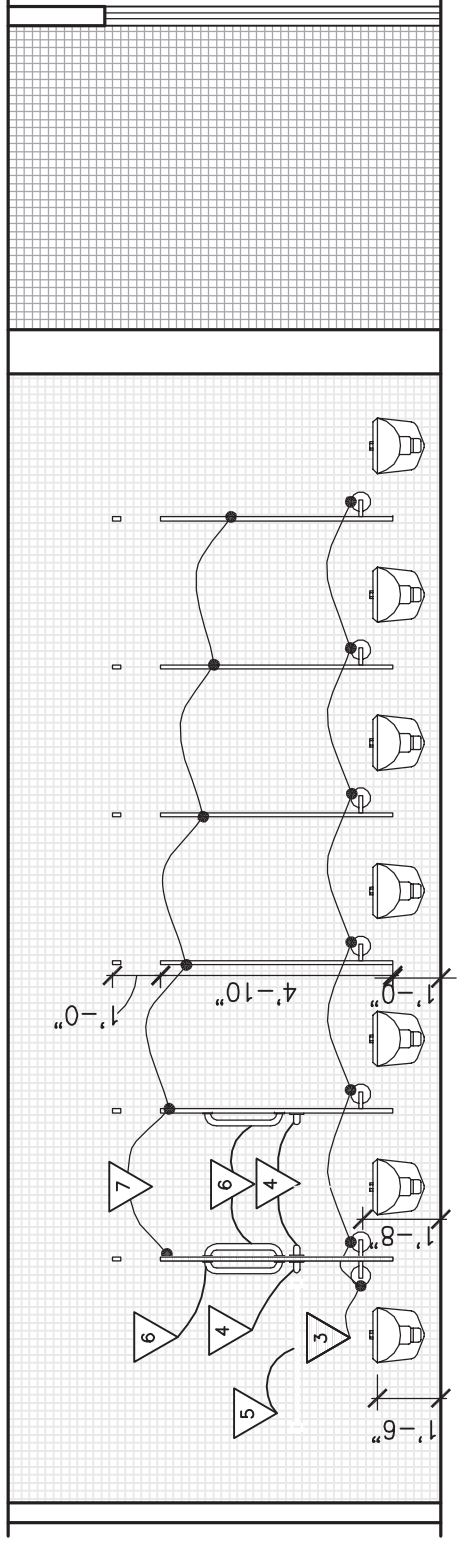
SK-022 R

THE MUSIAL GROUP ARCHITECTURE
191 Mill Lane Mountainside, NJ 07092 p. 908.232.2860 f. 908.232.2845



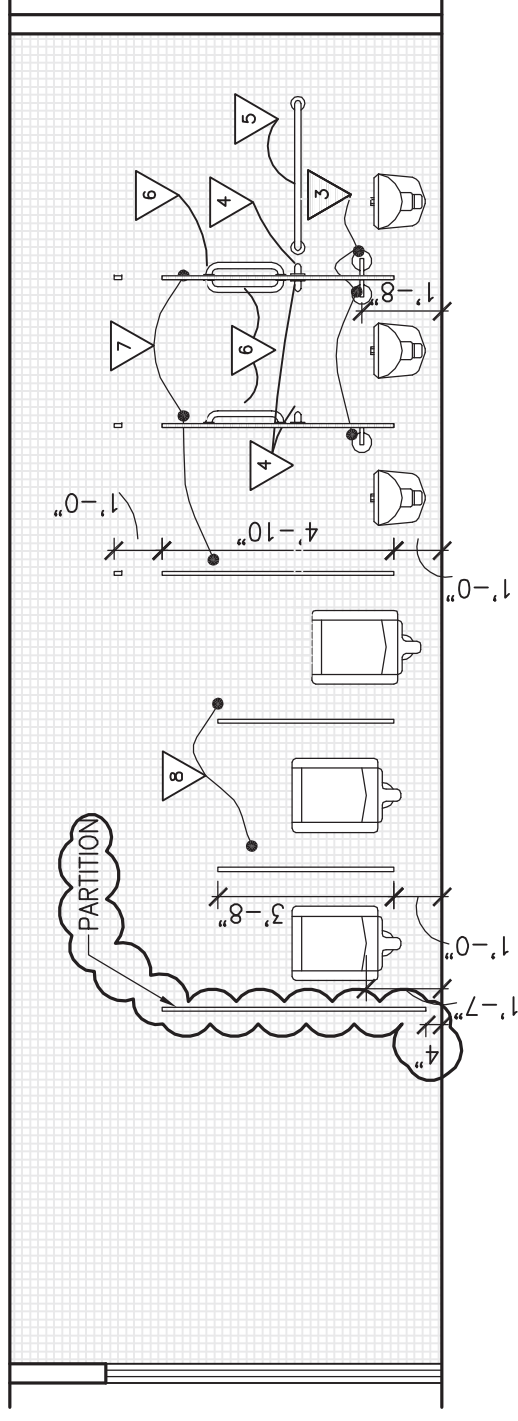
1/A421 LOWER LEVEL ENLARGED TOILET ROOMS PLAN

SCALE: 1/4" = 1'-0"



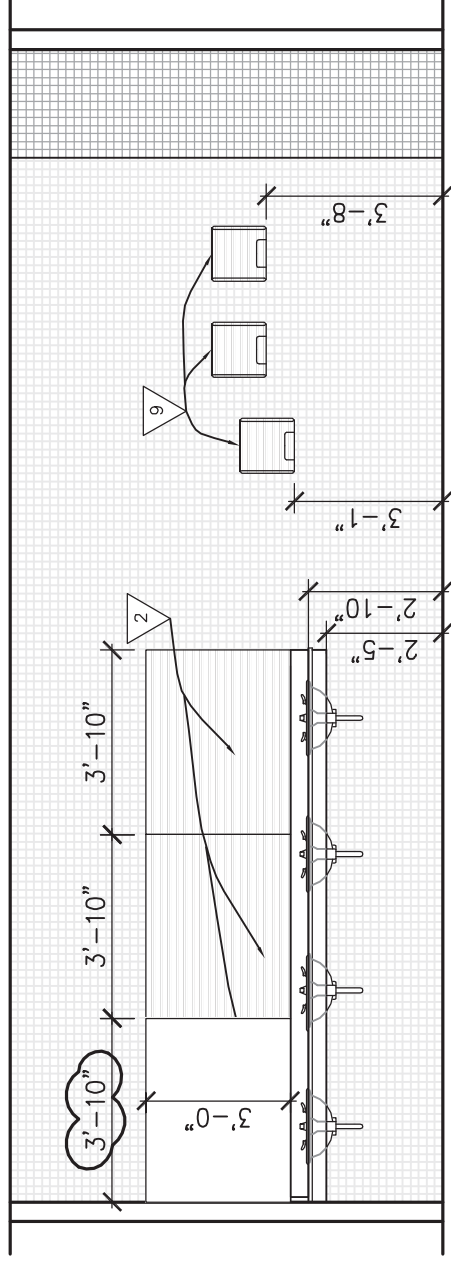
4/A421 LOWER LEVEL WOMEN'S TOILET ROOM ELEVATION

SCALE: 1/4" = 1'-0"



5/A421 LOWER LEVEL MEN'S TOILET ROOM ELEVATION

SCALE: 1/4" = 1'-0"



6/A421 LOWER LEVEL MEN'S TOILET ROOM ELEVATION

SCALE: 1/4" = 1'-0"

UCC LESSNER BUILDING - ELIZABETH CAMPUS
FIRST FLOOR & LOWER LEVEL RENOVATION

12 West Jersey Street
Elizabeth, NJ 07202

12 OCTOBER 2016

Project # 108813.00

SK-022-A_A421

THE MUSIAL GROUP ARCHITECTURE
191 Mill Lane Mountainside, NJ 07092 p. 908.232.2860 f. 908.232.2845

REFERENCE DRAWING A102

UCC LESSNER BUILDING - ELIZABETH CAMPUS FIRST FLOOR & LOWER LEVEL RENOVATION

12 West Jersey Street
Elizabeth, NJ 07202

1/ A102 FIRST FLOOR PLAN

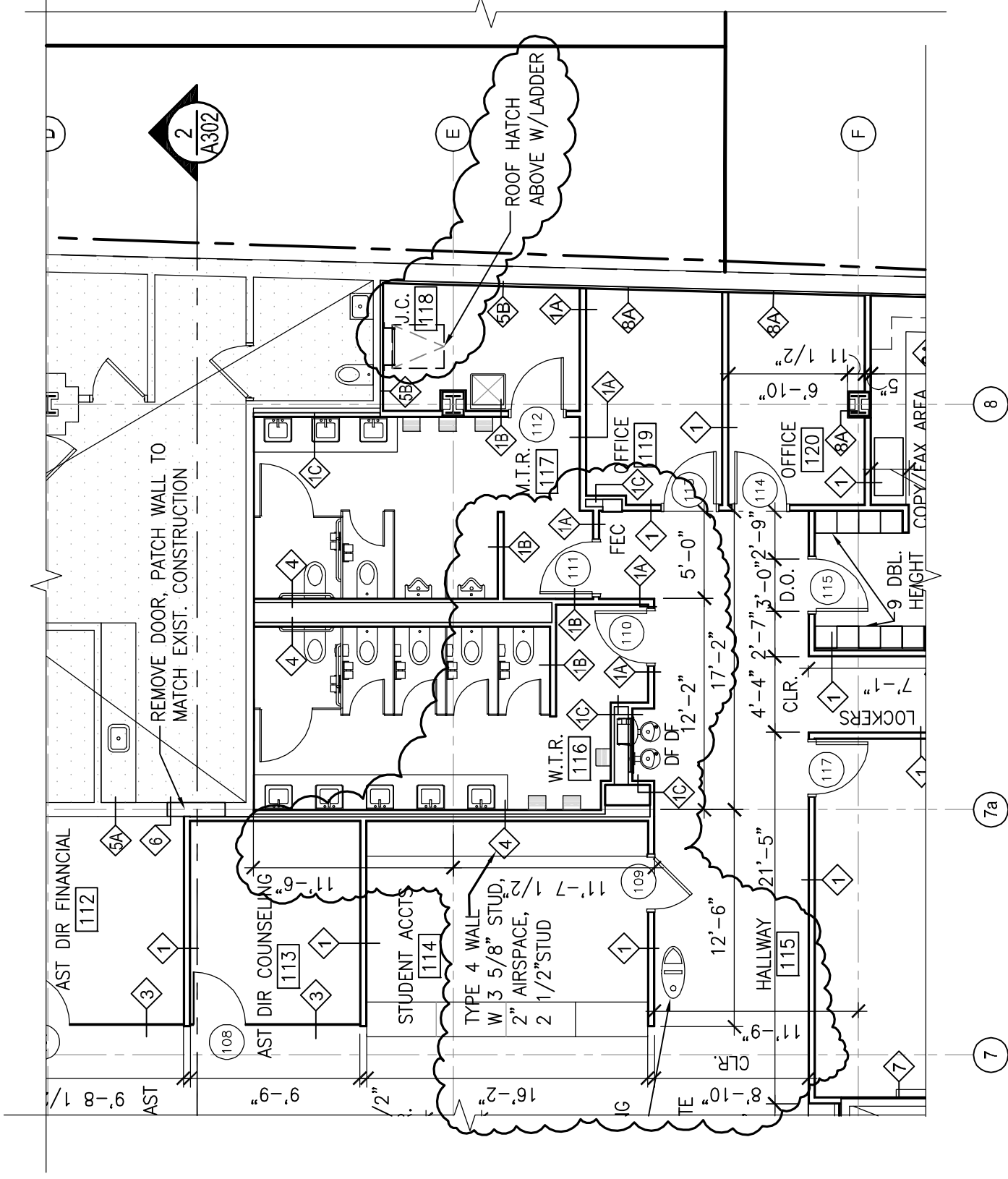
SCALE: 1/8" = 1'-0"

21 OCTOBER 2016

Project # 108813.00

SK-022B R2

THE MUSIAL GROUP ARCHITECTURE
191 Mill Lane Mountainside, NJ 07092 p. 908.232.2860 f. 908.232.2845



7

7a

8

REMOVE DOOR, PATCH WALL TO
MATCH EXIST. CONSTRUCTION

ROOF HATCH
ABOVE W/LADDER

2
A302

TMG REF 2/A421

UCC LESSNER BUILDING - ELIZABETH CAMPUS FIRST FLOOR & LOWER LEVEL RENOVATION

12 West Jersey Street
Elizabeth, NJ 07202

2/A421 FIRST FLOOR ENLARGED TOILET ROOMS PLAN

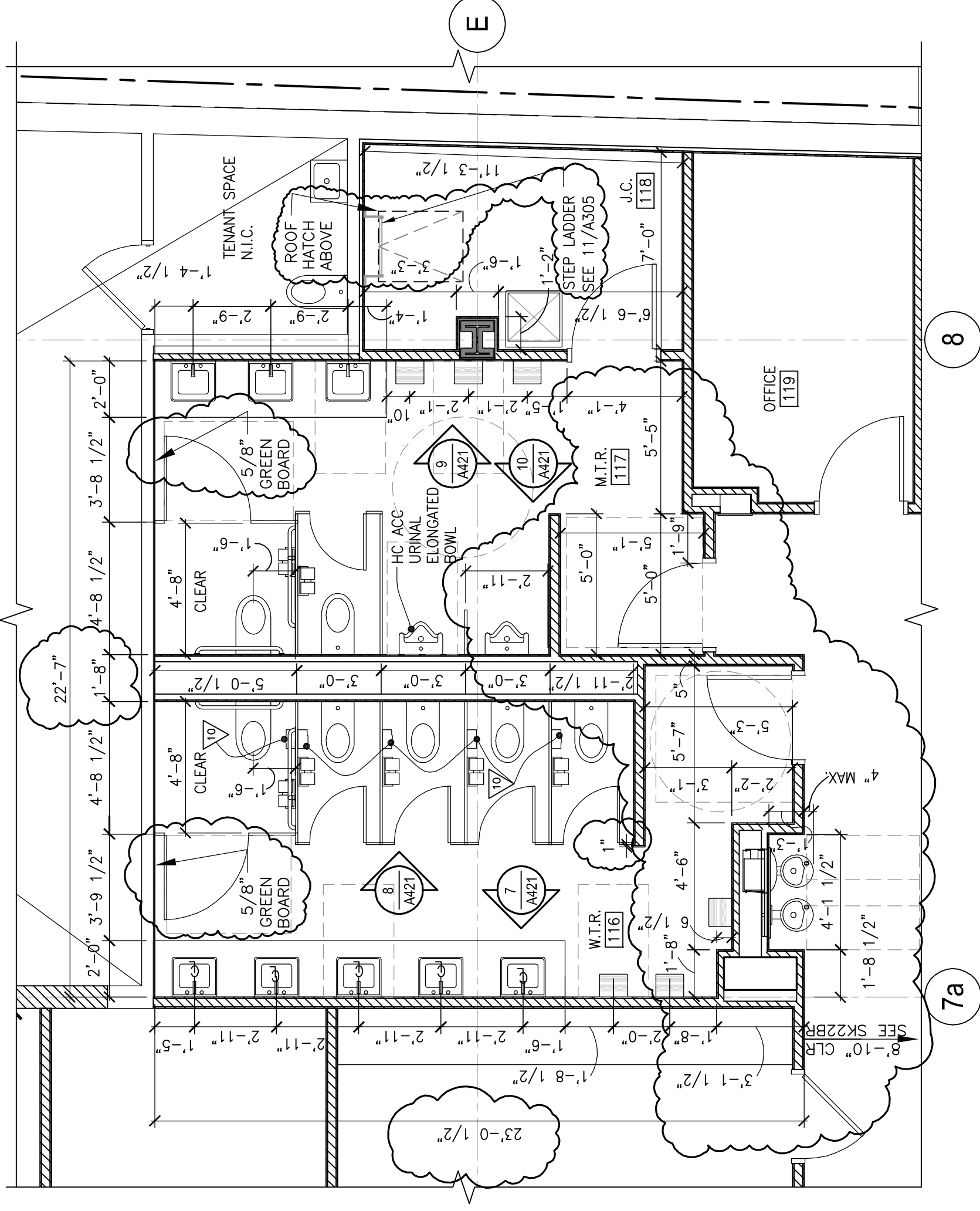
SCALE: 1/4" = 1'-0"

18 OCTOBER 2016

Project # 108813.00

SK-022C R

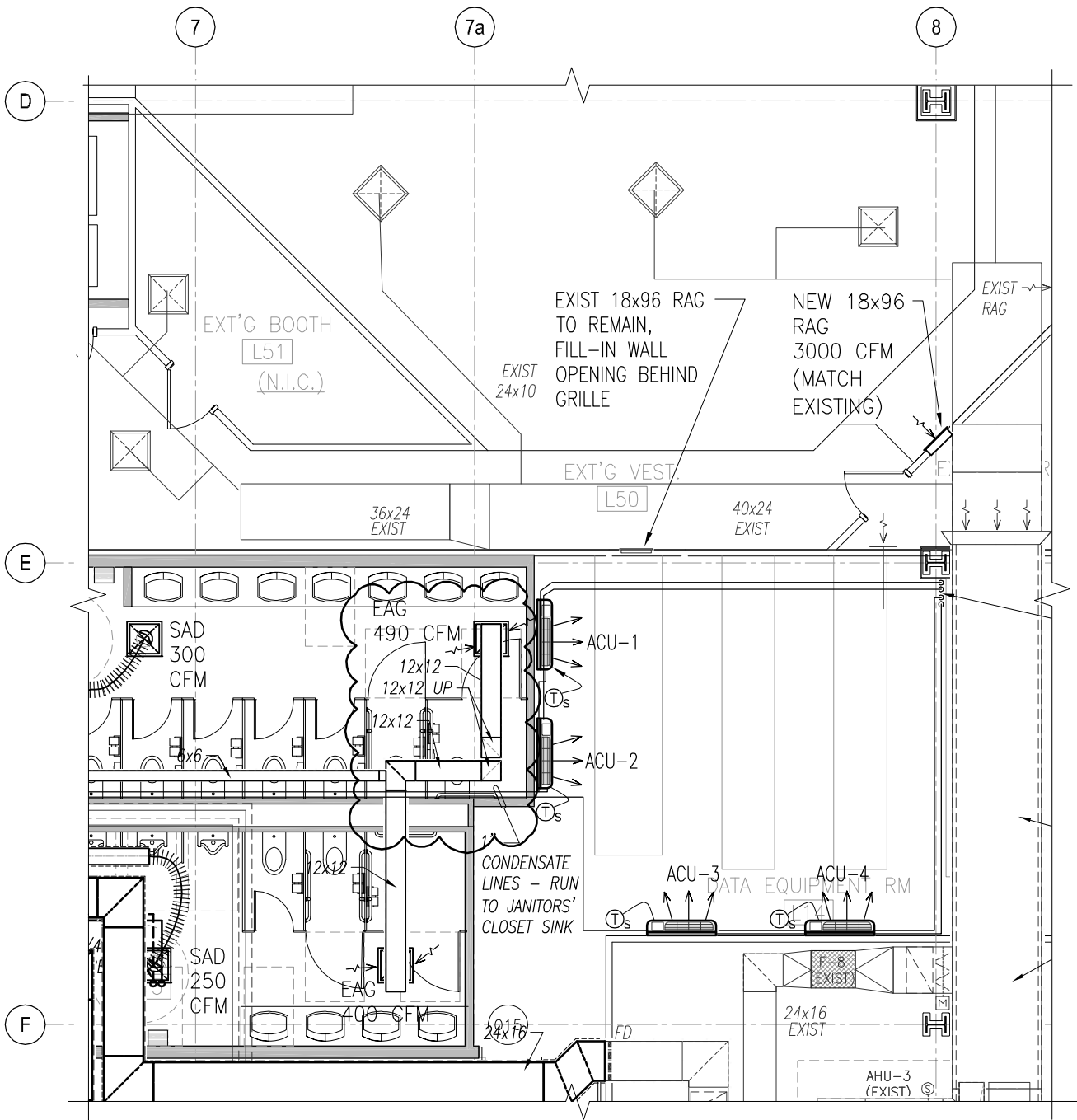
THE MUSIAL GROUP ARCHITECTURE
191 Mill Lane Mountainside, NJ 07092 p. 908.232.2860 f. 908.232.2845



8

7a

E



LOWER LEVEL PLAN

SCALE: 1/8" = 1'-0"

Ref Dwg: 108813-M101-&Demo-0Bsmt.dwg

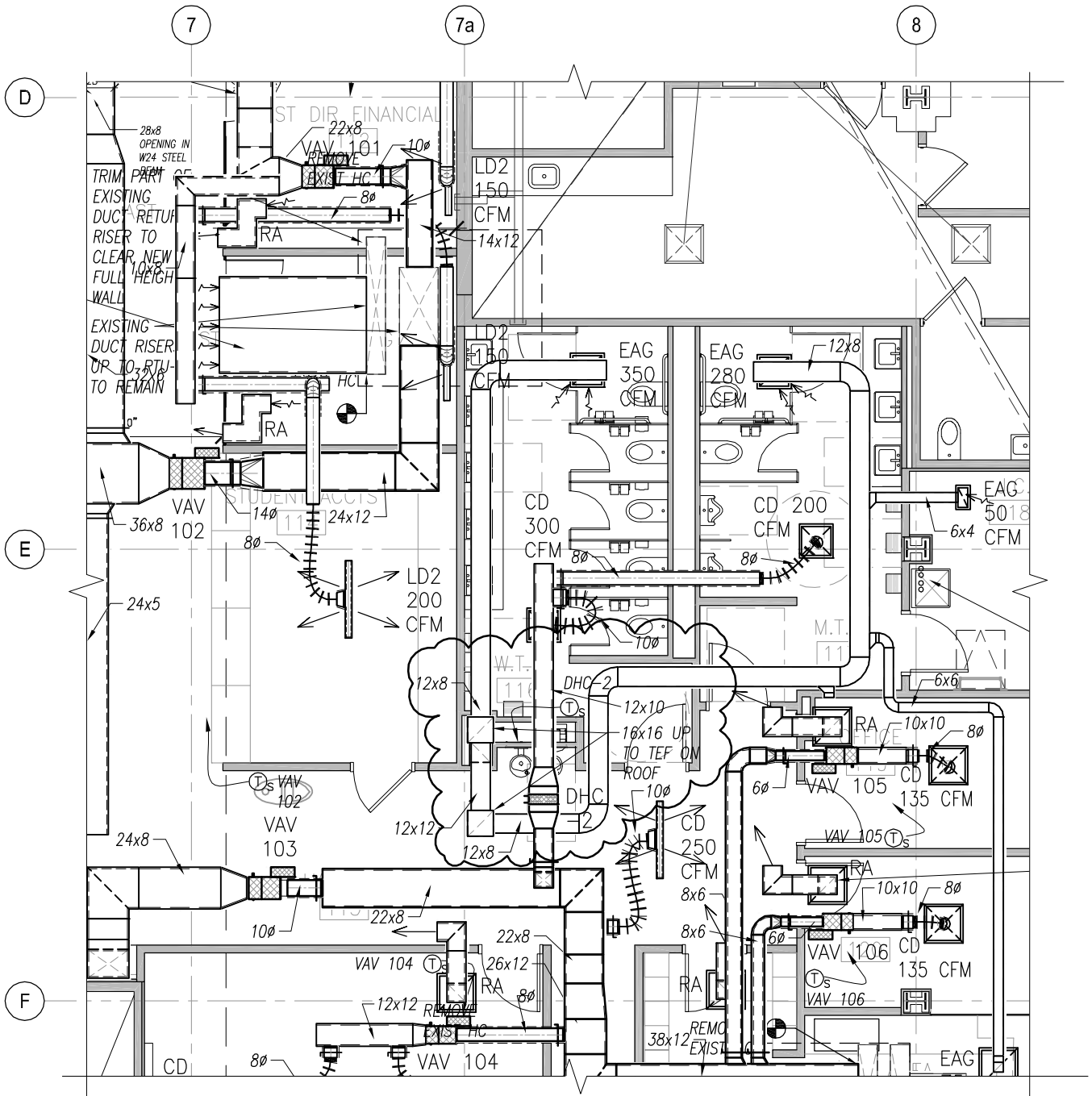
**LESSNER 1ST FLR ADDITION &
1ST FLR & LOWER LEVEL
REHABILITATION**

12 West Jersey Street
Elizabeth, NJ 07202

Oct, 13, 2016
Project # 108813.00

SK-022E_M101

191 Mill Lane Mountainside, NJ 07092 p. 908.232.2860 f. 908.232.2845



FIRST FLOOR PLAN

SCALE: 1/8" = 1'-0"

Ref Dwg: 108813-M102-&Demo-1st.dwg

**LESSNER 1ST FLR ADDITION &
1ST FLR & LOWER LEVEL
REHABILITATION**

12 West Jersey Street
Elizabeth, NJ 07202

Oct. 13, 2016
Project # 108813.00

SK-022F_M102

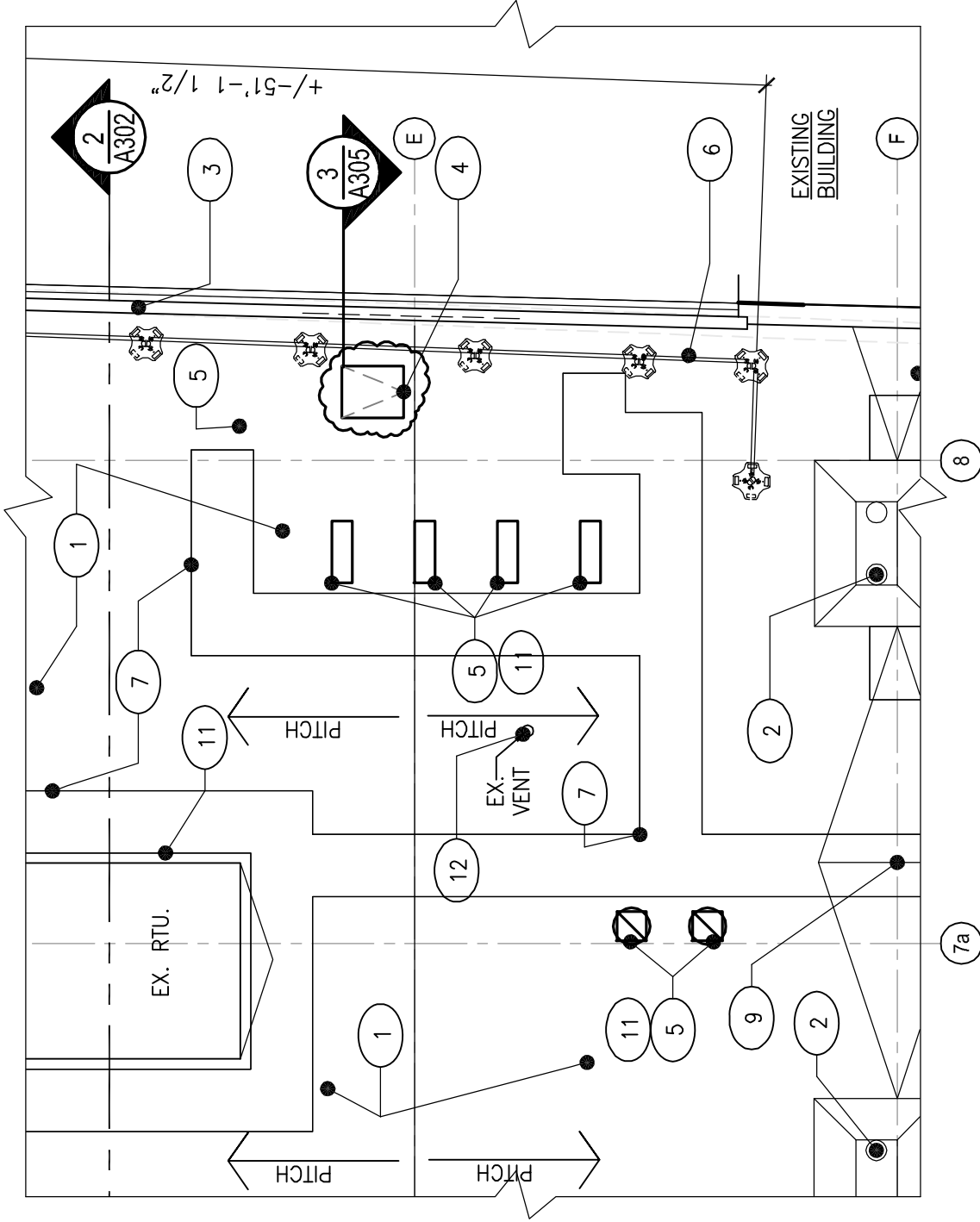
191 Mill Lane Mountainside, NJ 07092 p. 908.232.2860 f. 908.232.2845

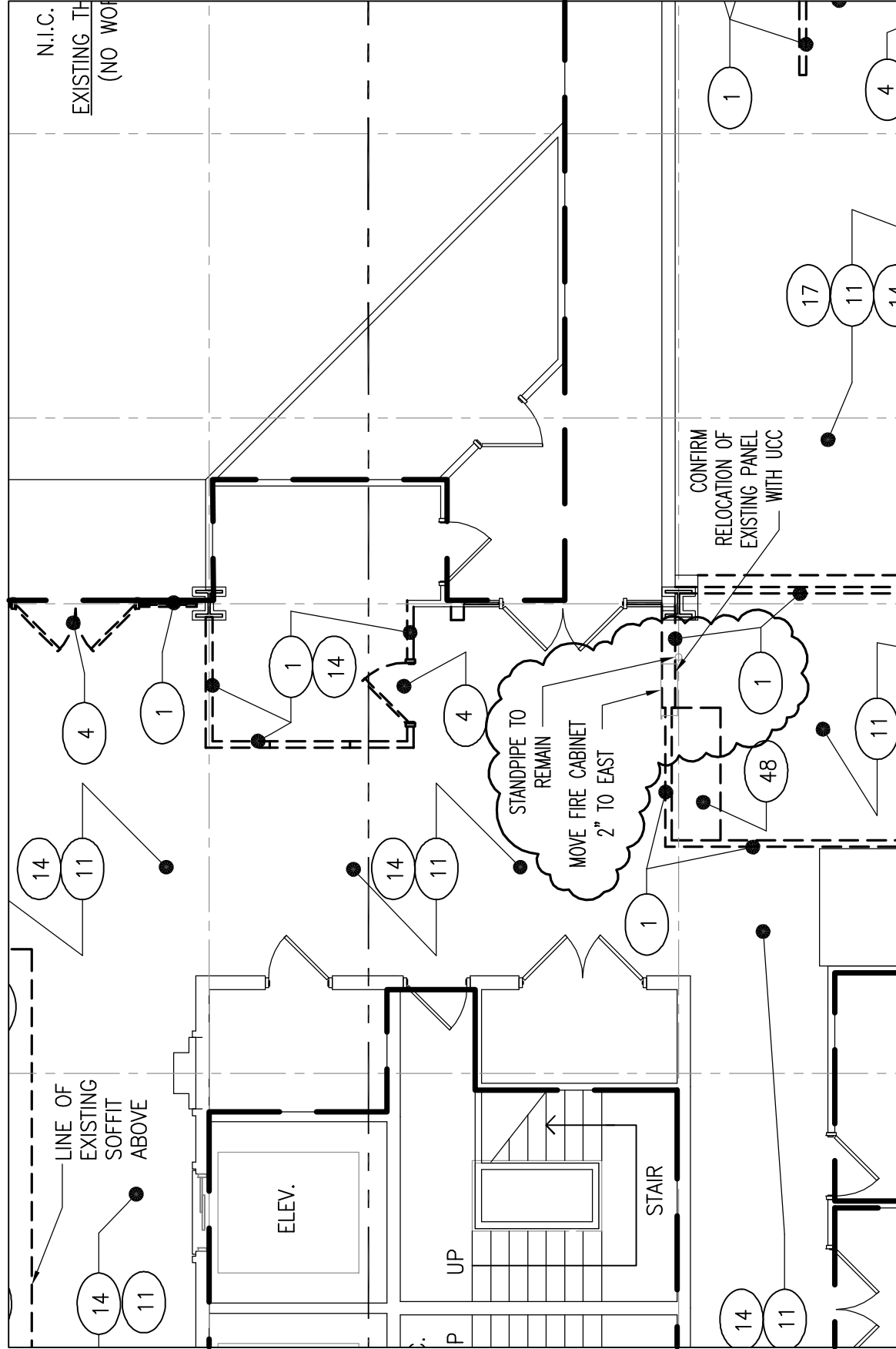
10-18-2016
Project # 108813.00

PARTIAL ROOF PLAN
SCALE: 1/8" = 1'-0"

REFERENCE DRAWING A103
UCC LESSNER BUILDING - ELIZABETH CAMPUS
FIRST FLOOR & LOWER LEVEL RENOVATION
12 West Jersey Street
Elizabeth, NJ 07202

SK-022G
THE MUSIAL GROUP ARCHITECTURE
191 Mill Lane Mountainside, NJ 07092 p. 908.232.2860 f. 908.232.2845





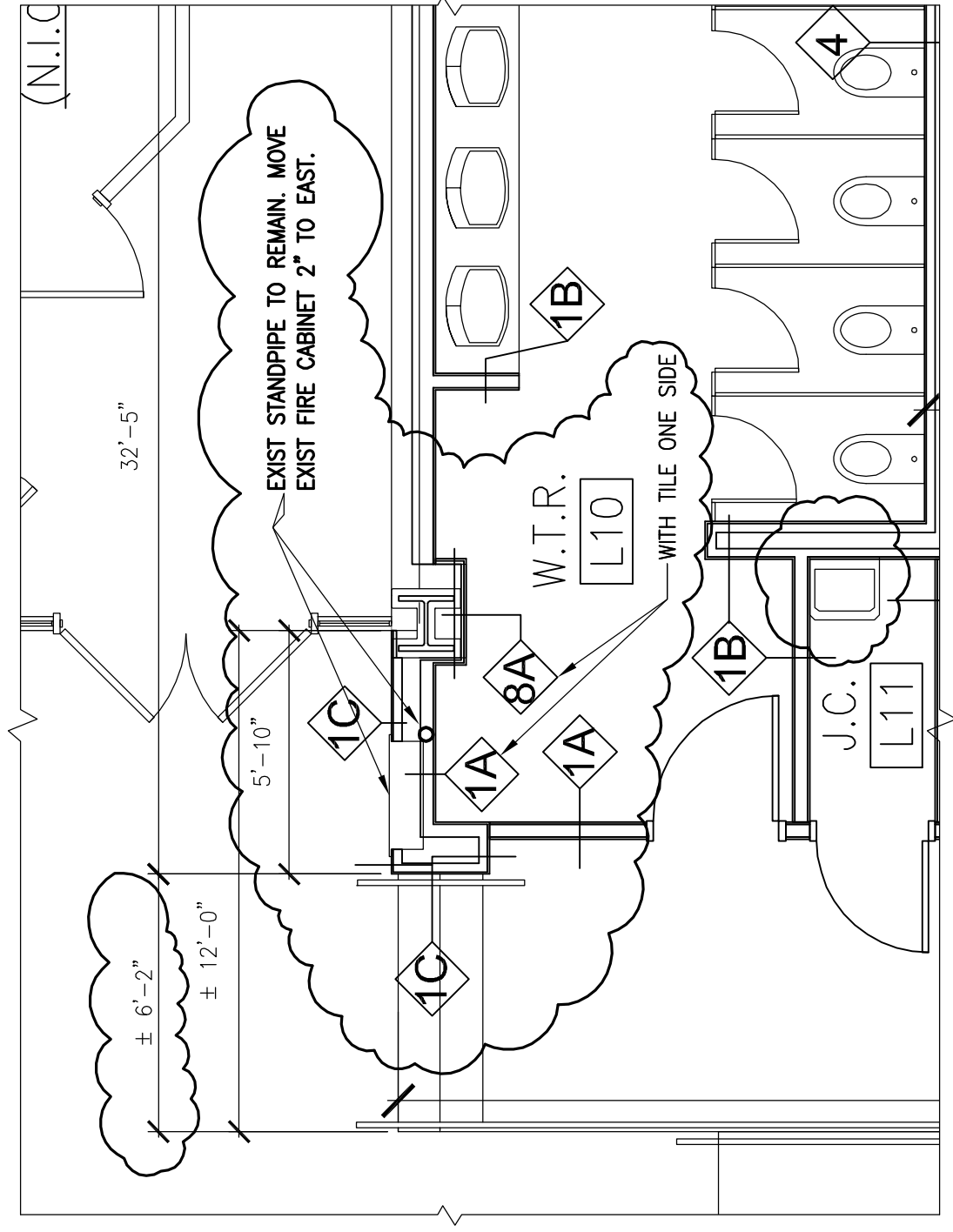
LOWER LEVEL PARTIAL DEMOLITION PLAN

Project # 108813.00
21 October 2016

DWG REFERENCE AD101
UCC LESSNER BUILDING - ELIZABETH CAMPUS
FIRST FLOOR & LOWER LEVEL RENOVATION

12 West Jersey Street
Elizabeth, NJ 07202

SK-022H
THE MUSIAL GROUP ARCHITECTURE
191 Mill Lane Mountainside, NJ 07092 p. 908.232.2860 f. 908.232.2845



LOWER LEVEL PLAN FIRE STANDPIPE AND EXTINGUISHER CABINET

SCALE: 1/4" = 1'-0"

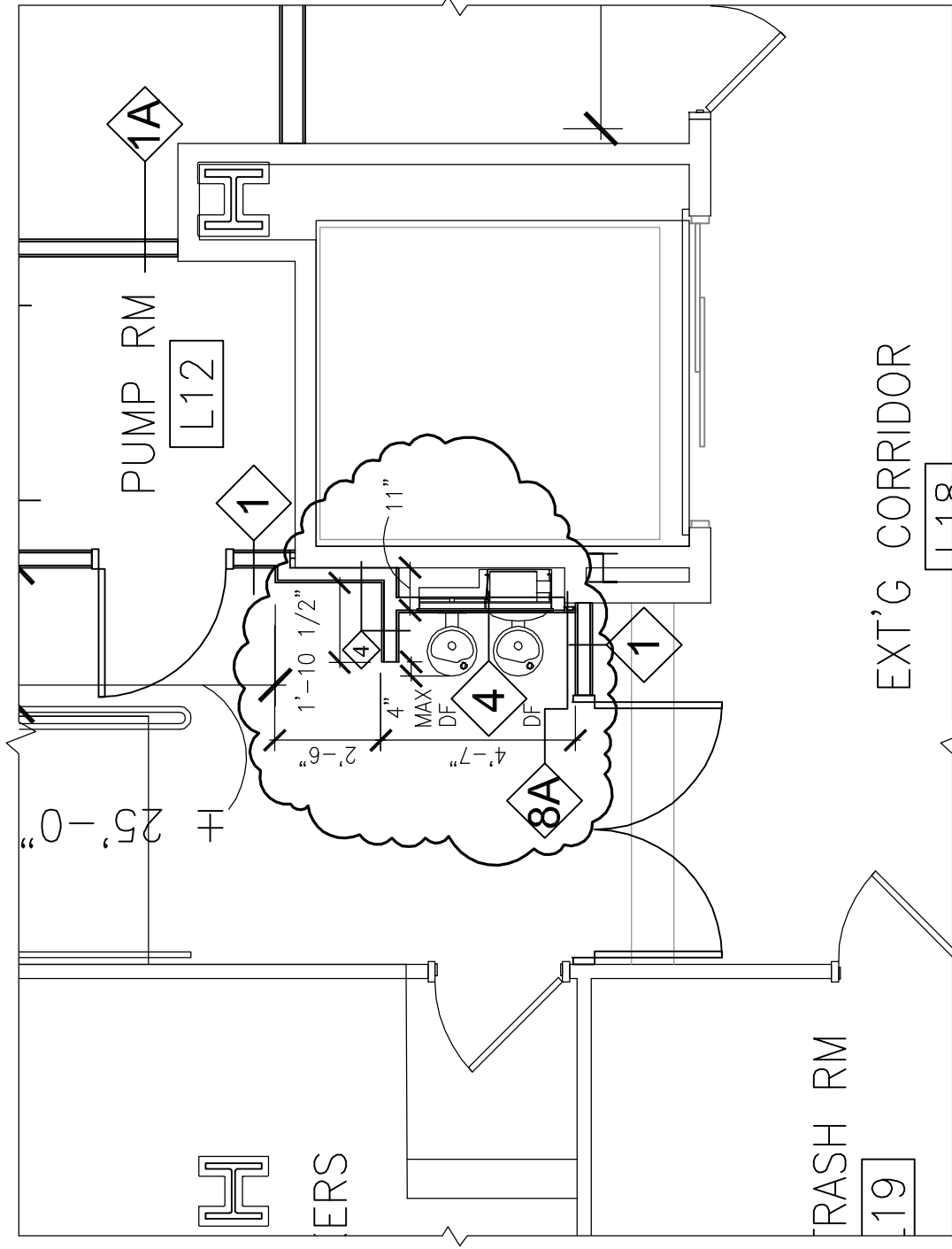
21 October 2016
Project # 108813.00

DWG REFERENCE A101
UCC LESSNER BUILDING - ELIZABETH CAMPUS
FIRST FLOOR & LOWER LEVEL RENOVATION

12 West Jersey Street
Elizabeth, NJ 07202

SK-031 R

THE MUSIAL GROUP ARCHITECTURE
191 Mill Lane Mountainside, NJ 07092 p. 908.232.2860 f. 908.232.2845



LOWER LEVEL PLAN DRINKING FOUNTAINS

SCALE: 1/4" = 1'-0"

17 October 2016
Project # 108813.00

DWG REFERENCE A101
UCC LESSNER BUILDING - ELIZABETH CAMPUS
FIRST FLOOR & LOWER LEVEL RENOVATION

12 West Jersey Street
Elizabeth, NJ 07202

SK-031A

THE MUSIAL GROUP ARCHITECTURE
191 Mill Lane Mountainside, NJ 07092 p. 908.232.2860 f. 908.232.2845