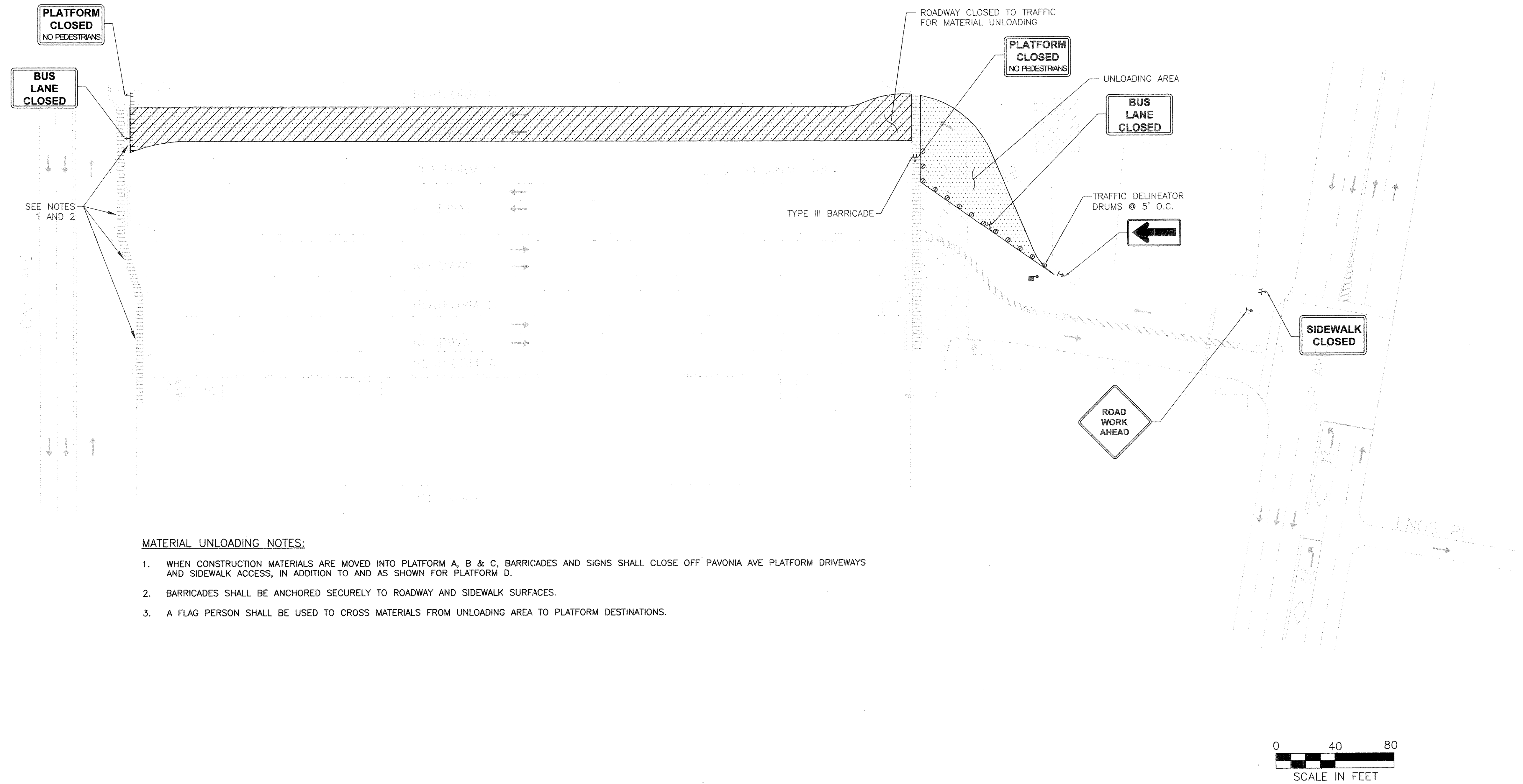
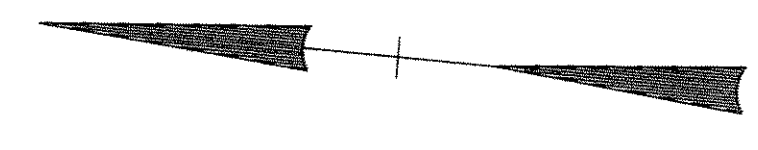
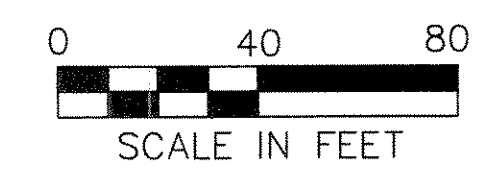


James R. ...
CHIEF TRAFFIC ENGINEER



MATERIAL UNLOADING NOTES:

1. WHEN CONSTRUCTION MATERIALS ARE MOVED INTO PLATFORM A, B & C, BARRICADES AND SIGNS SHALL CLOSE OFF PAVONIA AVE PLATFORM DRIVEWAYS AND SIDEWALK ACCESS, IN ADDITION TO AND AS SHOWN FOR PLATFORM D.
2. BARRICADES SHALL BE ANCHORED SECURELY TO ROADWAY AND SIDEWALK SURFACES.
3. A FLAG PERSON SHALL BE USED TO CROSS MATERIALS FROM UNLOADING AREA TO PLATFORM DESTINATIONS.



No.	Date	Revision	Approved
ENGINEERING DEPARTMENT			
JOURNAL SQUARE TRANSPORTATION CENTER			
TRAFFIC			

Title
BUS TERMINAL ESCALATOR REPLACEMENT
MAINTENANCE OF TRAFFIC
ROADWAY CLOSURE FOR MATERIAL UNLOADING

This drawing subject to conditions in contract. All inventions, ideas, designs and methods herein are reserved to Port Authority and may not be used without its written consent.
All recipients of Contract documents, including bidders and those who do not bid and their prospective subcontractors and suppliers who may receive all or a part of the Contract documents or copies thereof, shall make every effort to ensure the secure and appropriate disposal of the Contract documents to prevent further disclosure of the information contained in the documents. Secure and appropriate disposal includes methods of document destruction such as shredding or arrangements with refuse handlers that ensure that third persons will not have access to the documents' contents either before, during, or after disposal. Documents may also be returned for disposal purposes to the Contract Desk on the 3rd Floor, J Gateway Center, Newark, NJ 07102 or the office of the Director of Procurement, One Madison Avenue, 7th Floor, New York, NY 10010.

A.SARACENA **H.CONTRERA** **S.SYED**
Designed by Drawn by Checked by
Date **11/17/2008**
Contract Number **PAT-214.004**
Drawing Number **MT003**
PID# 07957000