

# THE MUSIAL GROUP ARCHITECTURE

191 Mill Lane  
Mountainside, NJ 07092  
P. 908.232.2860  
F. 908.232.2845  
E. [studio@themusialgroup.com](mailto:studio@themusialgroup.com)  
W. [www.themusialgroup.com](http://www.themusialgroup.com)

## BULLETIN\_11

Project Title: UCC Lessner Building 1<sup>st</sup> Floor Addition & 1<sup>st</sup> Floor & Lower Level Rehabilitation

Project No: 108813.00

Date: 1/5/2018

To: Clint Hall

From: Noel Musial

cc: , John Hall, Jessica Tilton, Kelly Kenny, Robert Hogan, Christopher Sapara- Grant , Bill Costello, Jon Colburn, Noel S. Musial

Remarks: Attached please find the following Bulletin\_11. Bulletin\_11 (drawing G101\_R7) includes the contractor requested incorporation of Sketch Sk133 elements into the full size sheet. Also included is the incorporation of curb at the property line at the adjacent alley.

### **G101\_R7**

1. Site elements are located dimensionally with respect to building column lines.
2. Grades depicted on Sk133 are incorporated.
3. Approx 9" l.f. of curb added to the Plan East Property line adjacent to the alley.
4. Planter drain lines depicted.
5. Tree grate is shifted to align with low point of existing alley.
6. Recycling bin at North East corner shifted and located

**END OF BULLETIN**



The Drawings, Specifications and other documents prepared by the Architect for this project are instruments of the Architect's service for use solely with respect to this project and the Architect shall be deemed the author of the drawings and other documents prepared by the Architect. The owner shall be permitted to retain copies, including reproducible copies, of the Architect's drawings, specifications or other documents shall not be used by the owner or others on other projects, for additions to this Project or for completion of this Project by others, unless the Architect agrees in writing and with appropriate compensation to the Architect.

Submission or distribution of documents to meet official regulatory requirements or for similar purposes in connection with the Project is not to be construed as publication in derogation of the Architect's reserved rights.

These drawings may not be reproduced by any means without the express written consent of the architect.

EACH CONTRACTOR SHALL THOROUGHLY EXAMINE AND BECOME FAMILIAR WITH ALL CONTRACT DOCUMENTS FOR THE PROJECT AND NOT LIMIT THEIR WORK TO DRAWINGS REFERENCED FOR INDIVIDUAL TRADES.

© Copyright 2016  
 BUSINESS PROPRIETARY INFORMATION



**LESSNER FIRST FLOOR ADDITION & FIRST FLOOR & LOWER LEVEL REHABILITATION**  
 Lessner Building  
 Elizabeth Campus  
 12 West Jersey Street  
 Elizabeth, NJ 07202

**THE MUSIAL GROUP ARCHITECTURE**  
 191 Mill Lane  
 Mountainside, NJ 07092  
 t. 908.232.2860  
 f. 908.232.2845  
 e. studio@themusialgroup.com

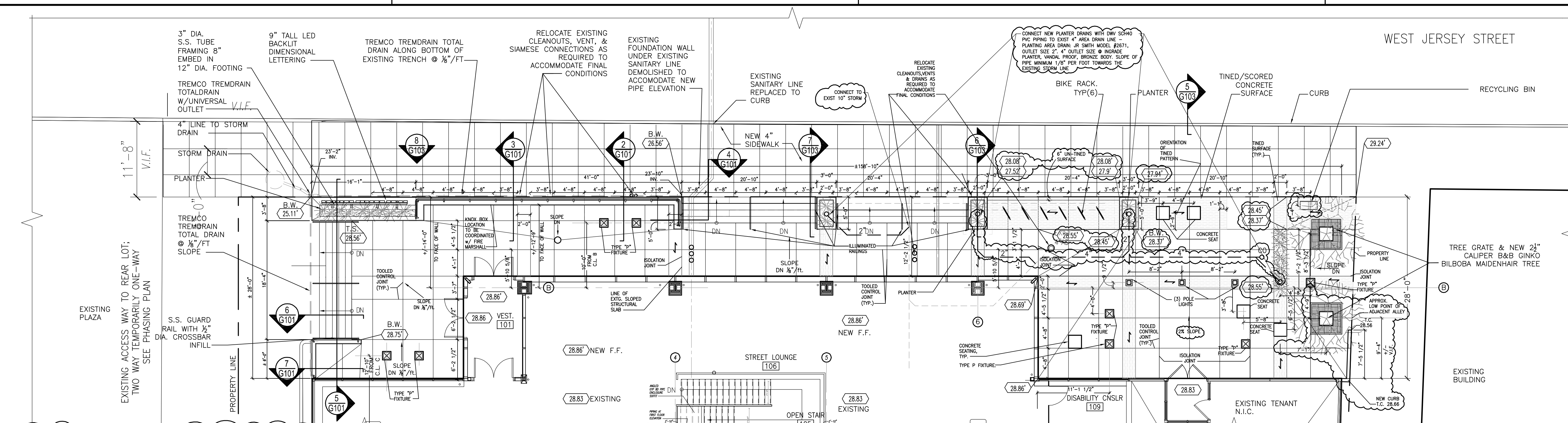
March 2016

Revision Number	Revision Description	Revision Date
3	EXISTING CONDITIONS	06/08/17
4	PLANTER RELOCATION	07/01/17
5	EXISTING CONDITIONS	07/18/17
6	CONCRETE JOINT PATTERN	10/27/17
7	INCORPORATION OF SK133	01/05/18

Scale: as noted  
 Drawn by:  
 Checked by:

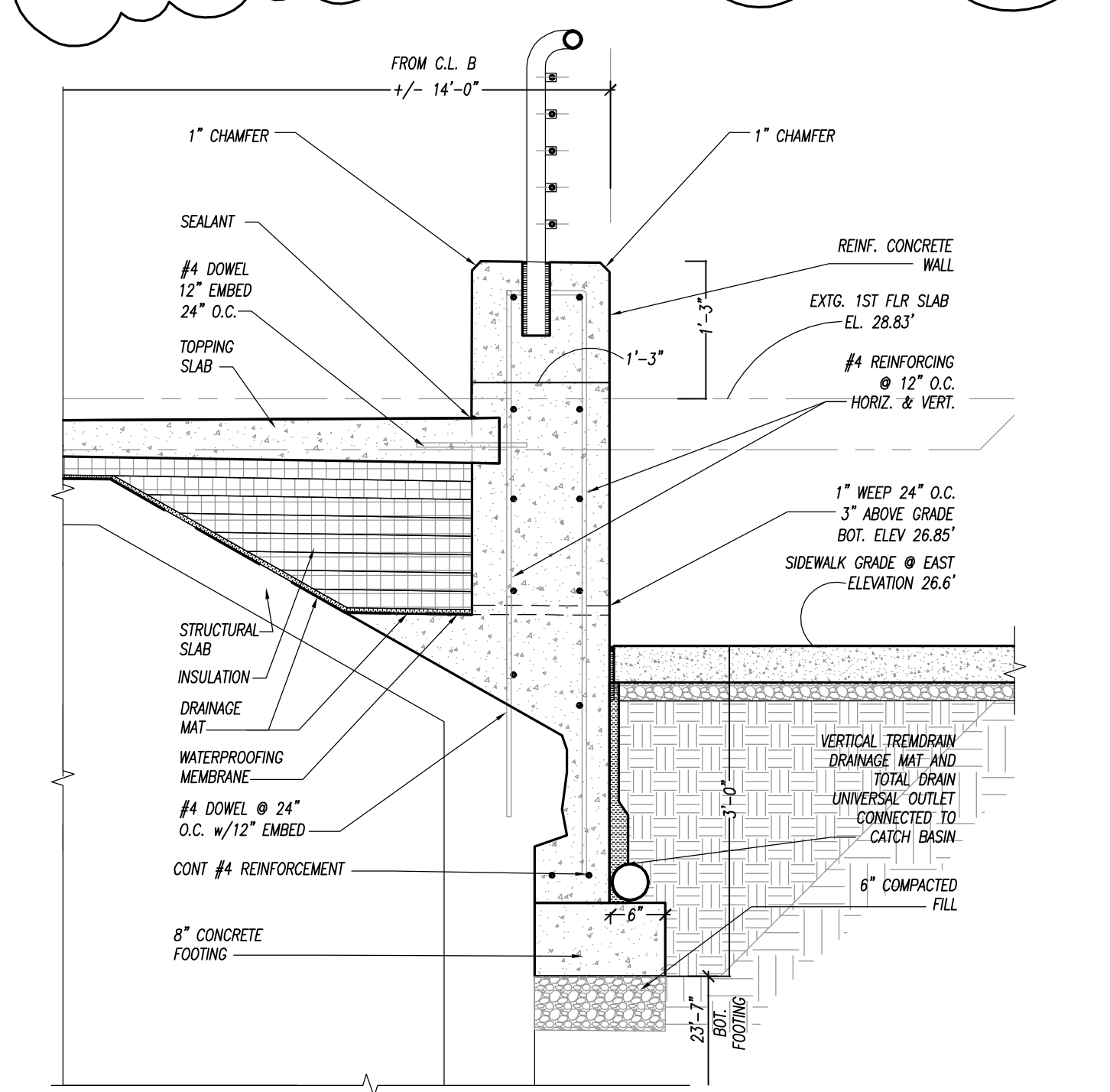
**108813**  
**LANDSCAPE AND PAVING PLAN**

**G101**

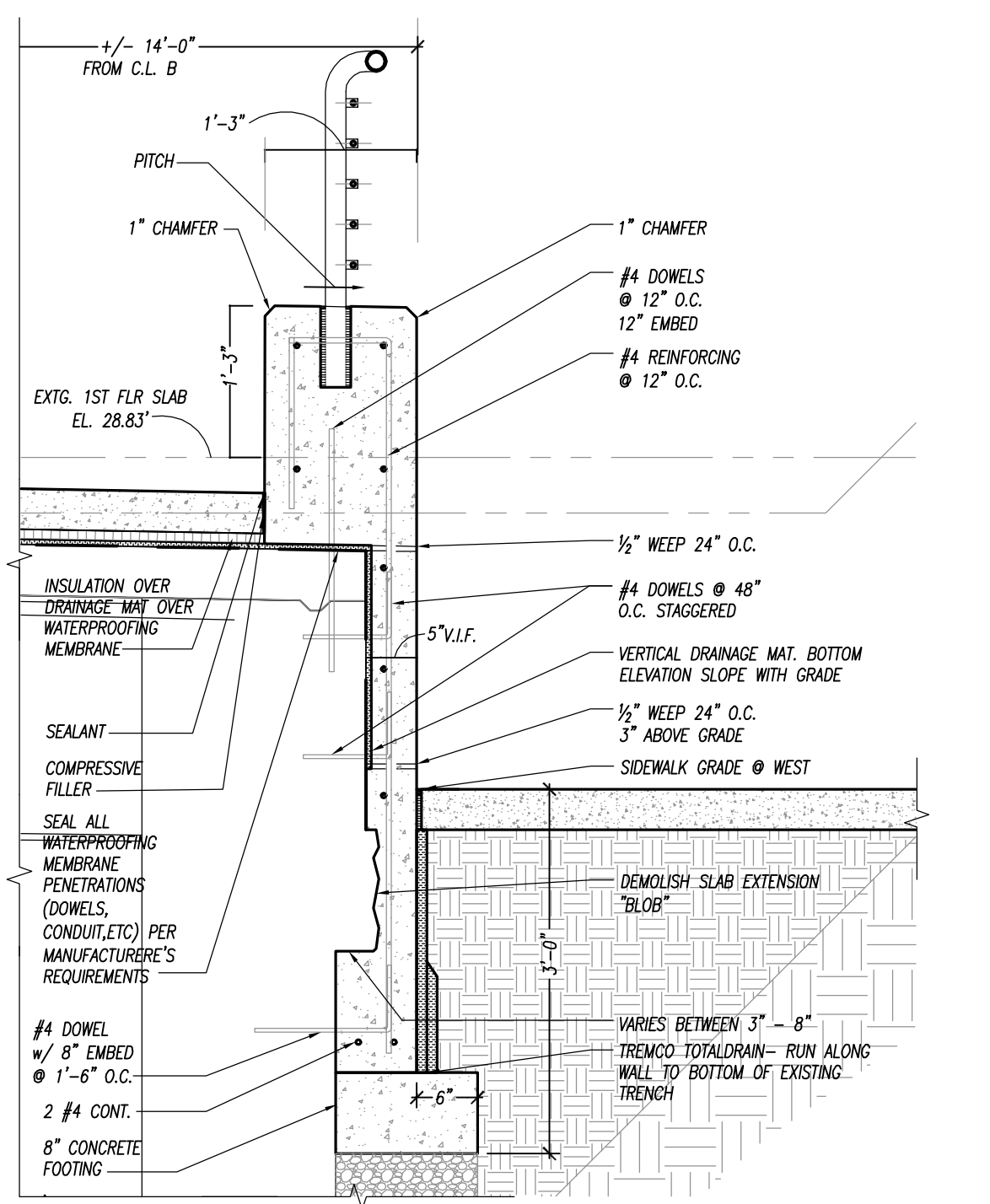


**1 LANDSCAPE AND PAVING PLAN - FRONT PLAZA** REF SK97A  
 G101 SCALE: 1/8" = 1'-0"

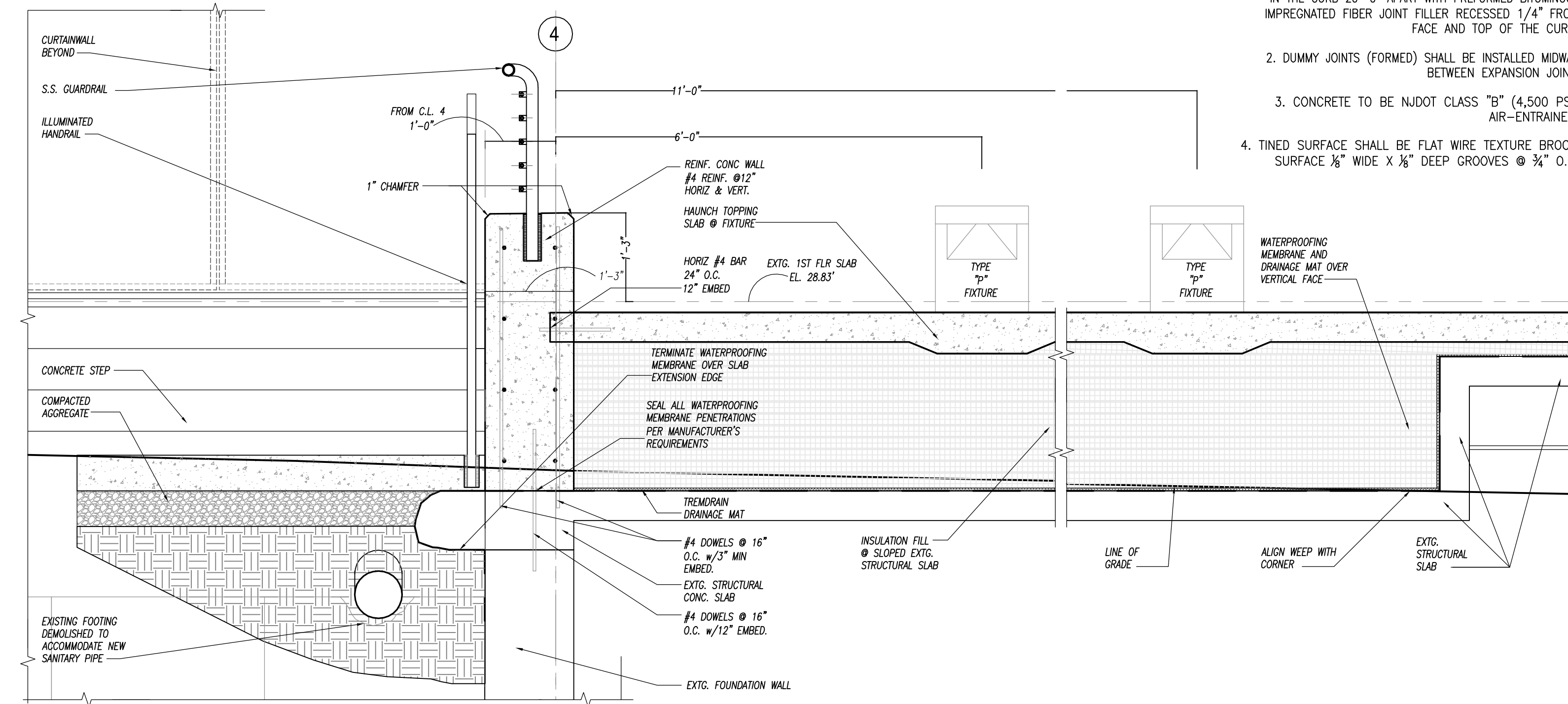
- GENERAL SITE NOTES:**
- TRANSVERSE JOINTS 1/2" WIDE SHALL BE INSTALLED IN THE CURB 20'-0" APART WITH PREFORMED BITUMINOUS IMPREGNATED FIBER JOINT FILLER RECESSED 1/4" FROM FACE AND TOP OF THE CURB.
  - DUMMY JOINTS (FORMED) SHALL BE INSTALLED MIDWAY BETWEEN EXPANSION JOINT.
  - CONCRETE TO BE NJDOT CLASS "B" (4,500 PSI) AIR-ENTRAINED.
  - TINED SURFACE SHALL BE FLAT WIRE TEXTURE BROOM SURFACE 1/8" WIDE X 1/8" DEEP GROOVES @ 3/4" O.C.



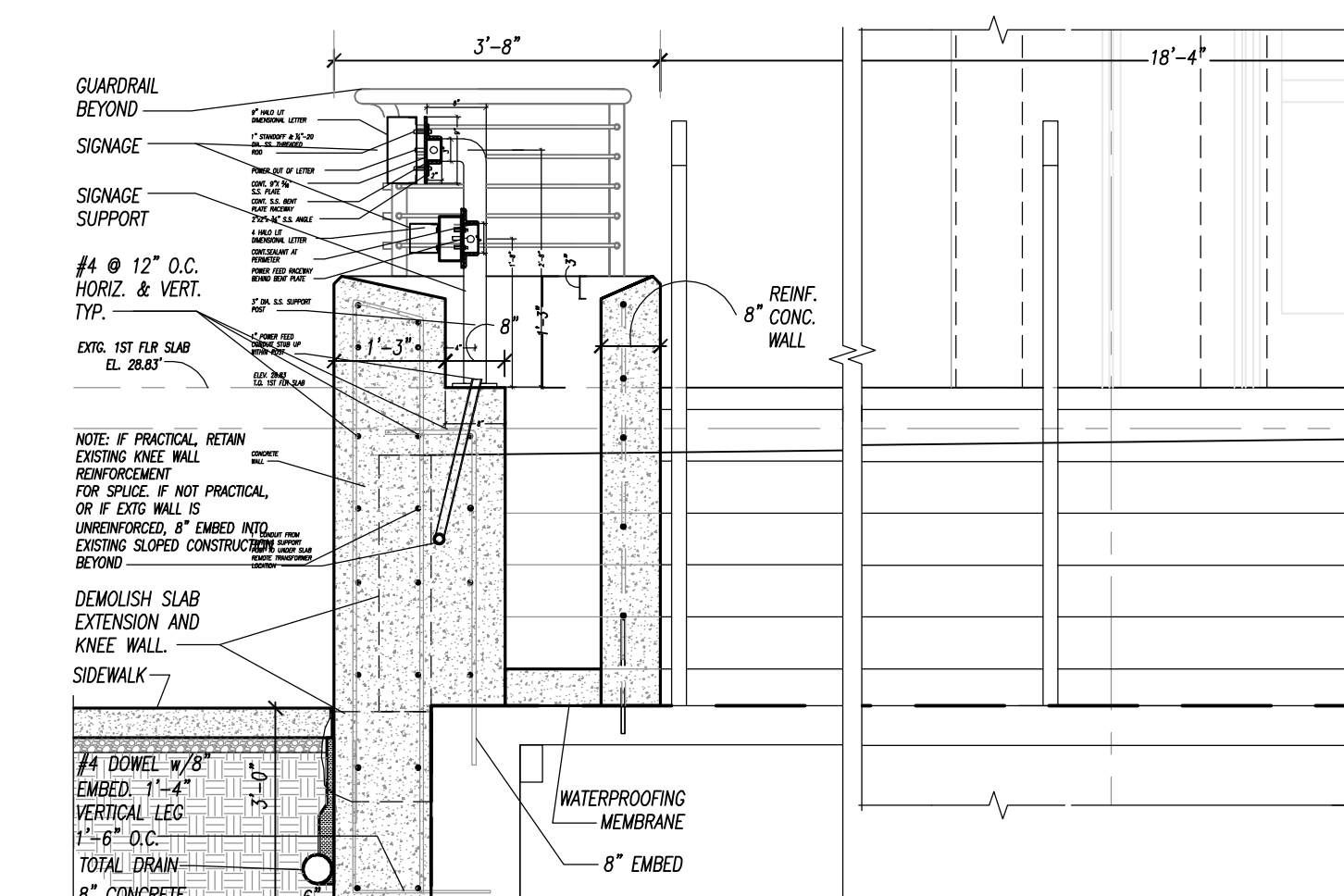
**2 SECTION DETAIL** REF SK97C  
 G101 SCALE: 1/2" = 1'-0"



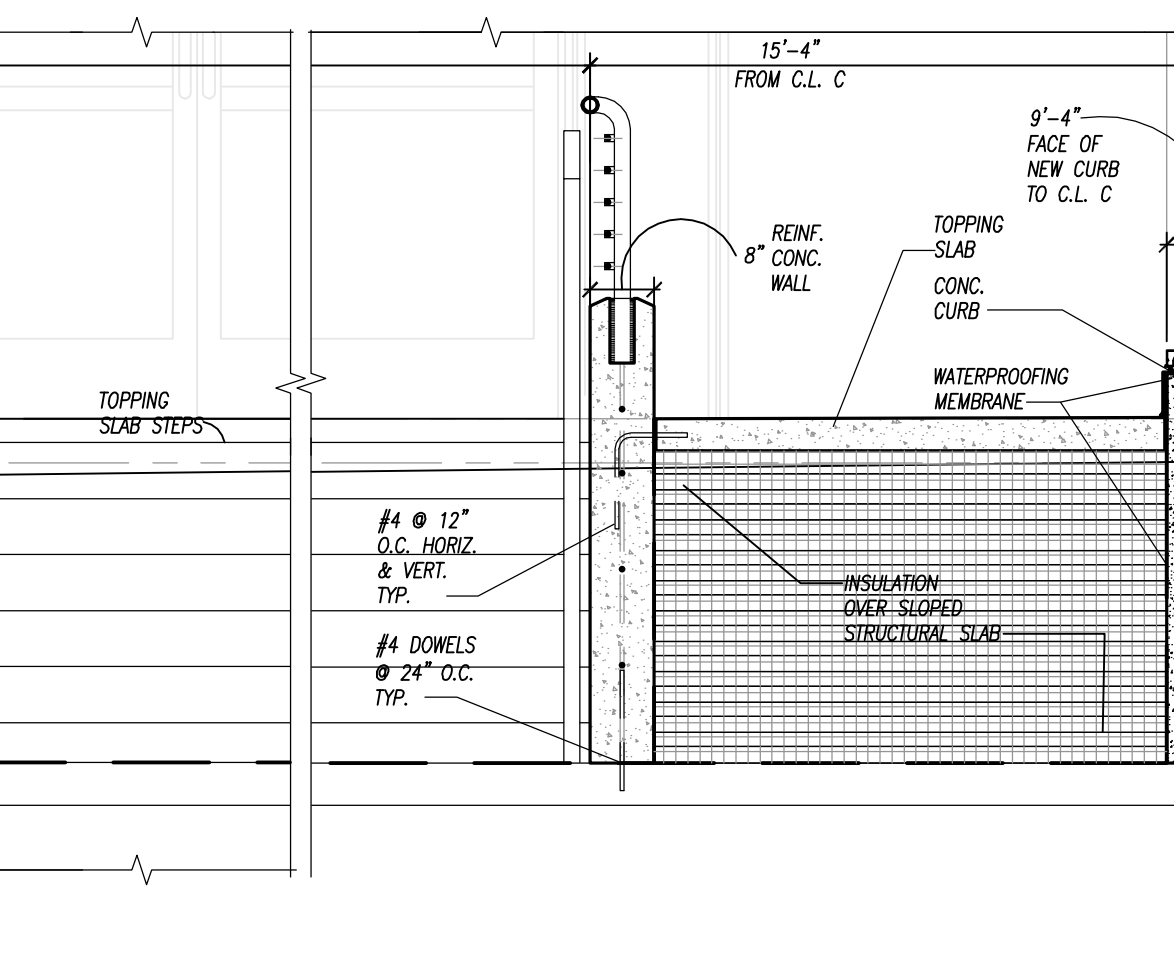
**3 SECTION DETAIL** REF SK97B  
 G101 SCALE: 1/2" = 1'-0"



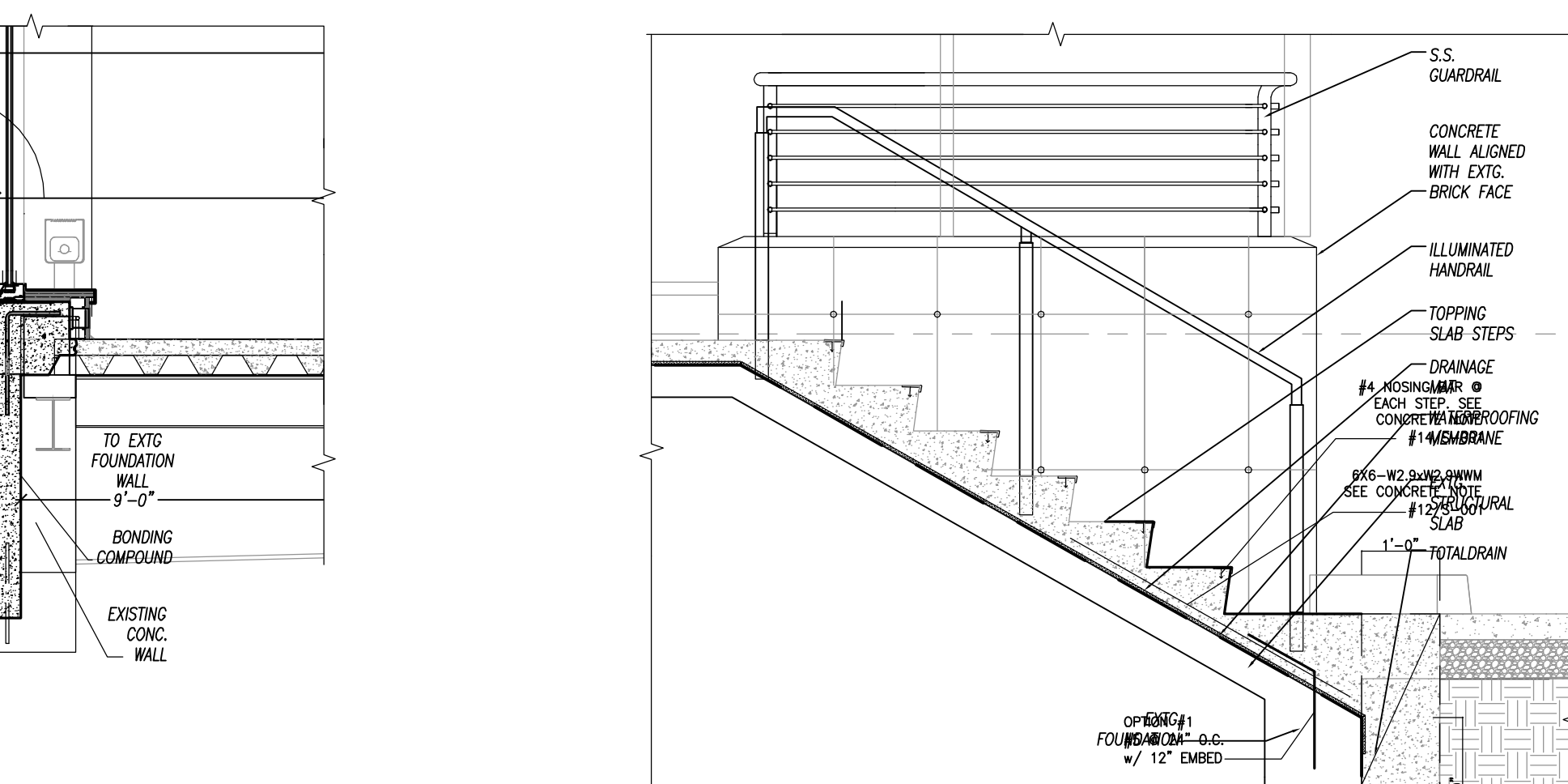
**4 SECTION DETAIL** REF SK97D  
 G101 SCALE: 1/2" = 1'-0"



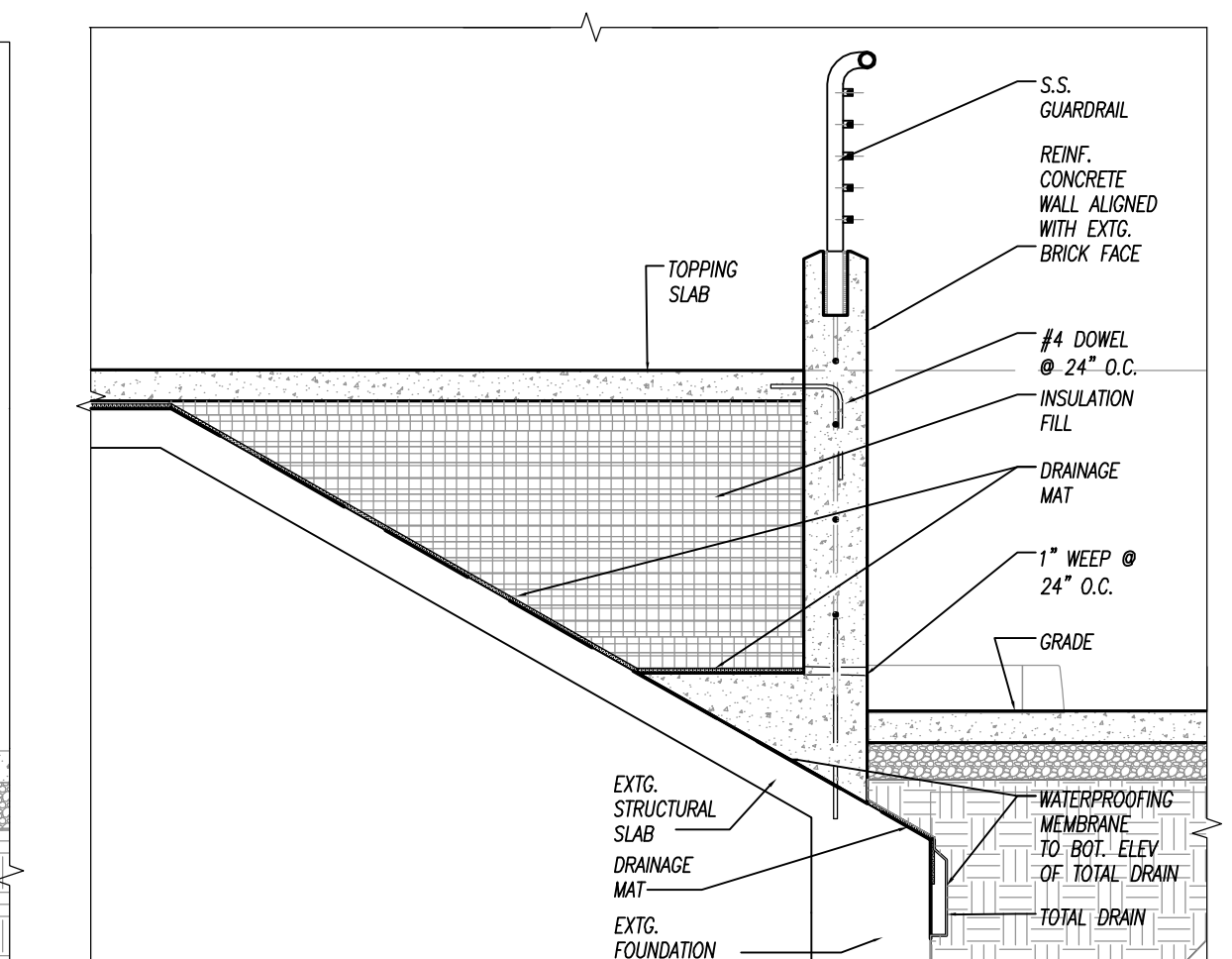
**5 SECTION DETAIL** REF SK97E  
 G101 SCALE: 1/2" = 1'-0"



**6 SECTION DETAIL** REF SK97F  
 G101 SCALE: 1/2" = 1'-0"



**7 SECTION DETAIL** REF SK97G  
 G101 SCALE: 1/2" = 1'-0"



**8 SECTION DETAIL** REF SK97H  
 G101 SCALE: 1/2" = 1'-0"

ORIGINAL  
 IF IT IS RED IT IS AN ORIGINAL