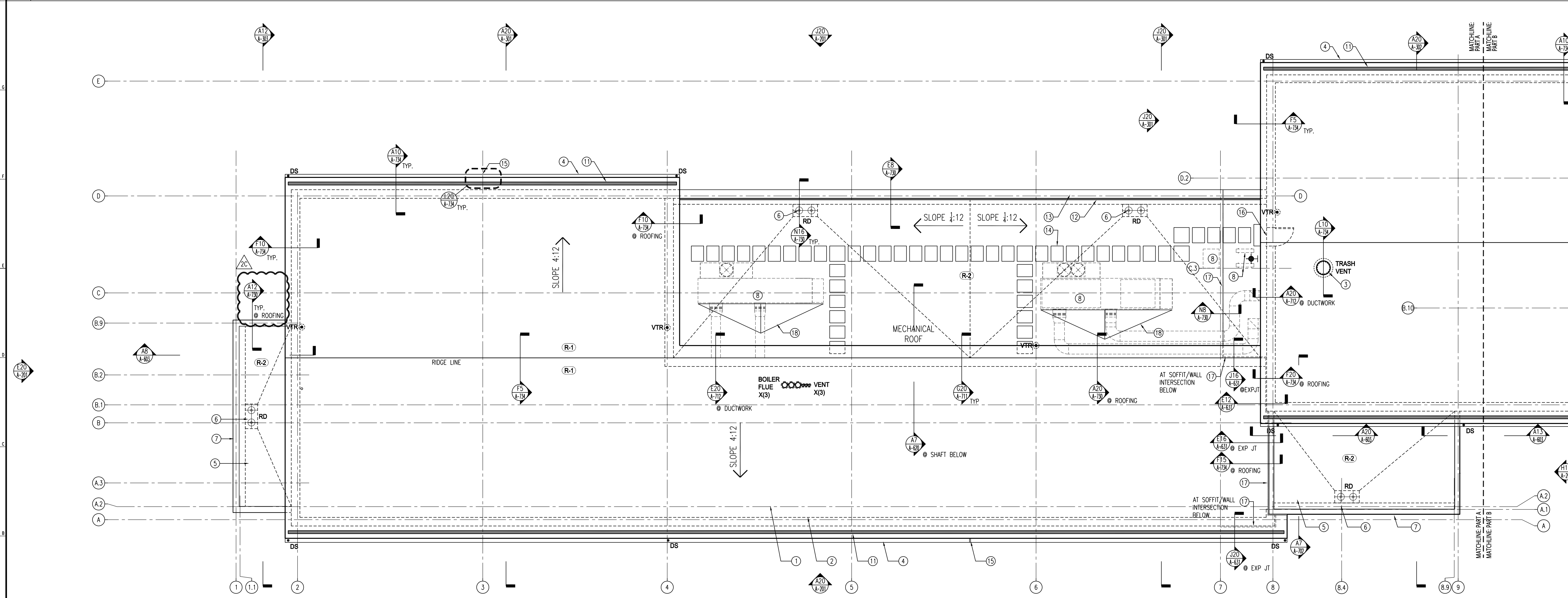


H20 ROOF PLAN - PART B

SCALE: 1/8" = 1'-0"



A20 ROOF PLAN - PART A

SCALE: 1/8" = 1'-0"

- ROOF PLAN LEGEND**
- ① KEYNOTE TAG
 - DS • 6" DIAMETER DOWNLEADER
 - VTR • ROOF VENT (COLD PIPE)
 - RD ROOF DRAIN W/ SECONDARY OVERFLOW DRAIN IN SAME 2'-0" X 4'-0" SUMP BASIN; SEE PLUMBING DRAWINGS
 - BUILDING MOUNTED UTILITY LIGHT, SEE RCPS AND ELECTRICAL PLANS
 - (R-X) ROOF ASSEMBLY TAG
 - R-1 = TYPICAL ASPHALTIC SHINGLE ROOF ASSEMBLY
COLOR: SEE SPECS
 - R-2 = SBS MODIFIED ROOF ASSEMBLY
COLOR: SEE SPECS
 - R-3 = STANDING SEAM METAL ROOF ASSEMBLY
COLOR: DURANAR SUNSTORM "ROCKY GREY"
FORMULATED AS ULTRA-COOL HIGH SRI COATING BY MANF. PPG

- GENERAL PLAN NOTES**
1. SEE A-730, A-732, AND A-734 FOR TYPICAL ROOF ASSEMBLIES & DETAILS

- ROOF PLAN KEY NOTES**
- 1 VENTILATED ASPHALT SHINGLE ROOFING ASSEMBLY, SEE BUILDING SECTIONS FOR SYSTEM DESCRIPTION
 - 2 DASHED LINE OF WALL BELOW
 - 3 TRASH CHUTE ROOF VENT W/ BLOW OFF TOP
 - 4 22 GA. MIN. ALUMINUM GUTTER AND 6" DIAMETER DOWNLEADERS W/ HEAT TRACE IN GUTTER AND FULL LENGTH OF DOWNLEADERS
 - 5 LOW-SLOPE ROOF ASSEMBLY, SEE BUILDING SECTIONS FOR SYSTEM DESCRIPTION
 - 6 ROOF DRAIN W/ SECONDARY OVER-FLOW IN (1) SUMP BASIN
 - 7 PRE-FINISHED MTL COPING
 - 8 MECHANICAL UNITS ON VIBRATION ISOLATING INSULATED MTL CURBS, SEE MEP DRAWINGS
 - 9 STANDING SEAM METAL ROOFING, SEE BUILDING SECTIONS
 - 10 36" X 48" ROOF HATCH W/ INSULATED MTL CURB
 - 11 MECHANICALLY FASTENED SNOW-RAIL SYSTEM
 - 12 PARAPET MOUNTED PTD. ALUMINUM OSHA COMPLIANT GUARDRAIL
 - 13 PRECAST STONE PARAPET CAP
 - 14 ROOF MEMBRANE WALK PAD, 2'-6" WIDE X 2FT PIECES. INSTALL WITH 6" CAP BETWEEN PADS FOR DRAINAGE
 - 15 GUTTER EXPANSION JOINT
 - 16 PRECAST CONCRETE TREAD AT DOOR ON ROOFING MEMBRANE SLIP SHEET, SEE DETAIL ON A-904
 - 17 CONTINUOUS BUILDING EXPANSION JOINT SEE LOCATION DIAGRAMS & DETAILS ON A-631
 - 18 TAPERED INSULATION ROOFING CRICKET
 - 19 VALLEY FLASHING
 - 20 EXTERIOR WALL WITH UTILITY METAL PANEL CLADDING, SEE TYPICAL ASSEMBLY DETAIL ON A-715
 - 21 CURB MOUNTED EXHAUST FAN, SEE MECH DWGS

Clarke Catton Hintz
 Architecture
 Landscape Architecture
 100 Barrack Street, Trenton, NJ 08648
 Tel: (609) 833-8383, Fax: (609) 833-4044
 www.clarkecattonhintz.com
 Drawing Copyright ©2018 Clarke Catton Hintz, PC

OWNER:
 WILLIAM PATTERSON UNIVERSITY
 300 POMPTON RD.
 WAYNE, NJ 07470
 (973) 729-2000

SITE / CIVIL / GEOTECHNICAL:
 LANGAN
 300 KIMBALL DRIVE
 PARSIPpany, NJ 07054
 (973) 560-4900

STRUCTURAL:
 HARRISON & HAMNETT
 40 KNOWLES STREET
 PENNINGTON, NJ 08634
 (609) 818-1808

MECHANICAL/ELECTRICAL/PLUMBING:
 FIRE PROTECTION
 PARTNER ENGINEERING AND SCIENCE, INC.
 611 INDUSTRIAL WAY WEST
 EASTONTOWN, NJ 07724
 (212) 388-1700

AV/IT & SECURITY:
 R.G. VANDERWEI ENGINEERS, LLP
 101 GROVERS MILL ROAD
 QUAMBERIDGE EXECUTIVE CENTER
 LAWRENCEVILLE, NJ 08648
 (609) 609.786.2727

SUBMISSIONS	
NO.	DATE / DESCRIPTION
1	07/14/17 CONSTRUCTION DOCUMENTS
2	08/07/17 FINAL CONSTR. DOCUMENTS

REVISIONS	
NO.	DATE / DESCRIPTION
1A	AS NOTED CONSTR. DOC. REVISIONS
2A	AS NOTED ADDENDUM 1
2B	08/24/17 ADDENDUM 2
2C	08/31/17 ADDENDUM 3
2D	09/08/17 ADDENDUM 6

ARCHITECT
 NO. LICENSE NO. 2140130000

 GREGORY M. HIBBS, AIA
 DATE: 08/07/2017

**WILLIAM PATTERSON UNIVERSITY
 NEW RESIDENCE HALL**
 WAYNE, NEW JERSEY

CONSTRUCTION DOCUMENTS
 (ISSUED FOR CONSTRUCTION)

DATE: 2017.08.07
 SCALE: AS NOTED
 DRAWN BY:
 CHECKED BY:

SHEET TITLE:
ROOF PLAN

DRAWING NO.:
A-107

CCH PROJECT NO.: 1932

