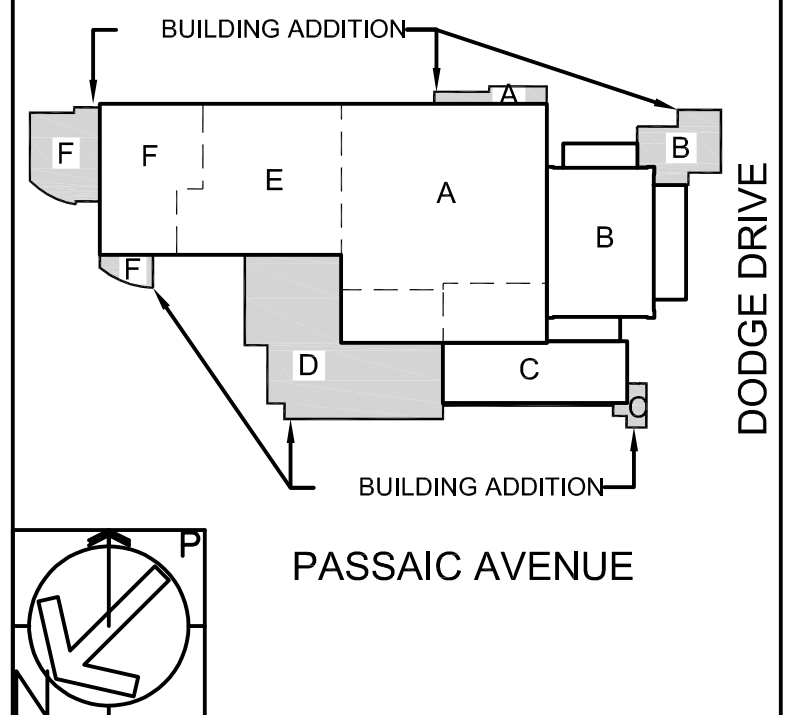


KEY NOTES

- ① CONDENSATE DRAIN PIPING THRU WALL 6" ABOVE FINISHED GRADE WITH PIPE SLEEVE. PIPE TO DRYWELL BELOW GRADE - SEE DETAIL. CORE DRILL WALL AND SEAL PIPING AND ANNULAR SPACE WATERTIGHT. PATCH & REPAIR EXISTING SIDEWALK TO REMAIN AS REQUIRED.
- ② REFRIGERANT PIPING (SUCTION, LIQUID AND HOT GAS) UP TO ROOF THRU PIPE PORTAL. SIZE AND ROUTING AS PER MANUFACTURER'S RECOMMENDATIONS. SEE SPECIFICATION FOR ADDITIONAL INFORMATION.



di cara rubino architects
 30 galesi drive
 wayne, nj 07470
 tel 973.256.0202 | fax 973.256.0227

MEMBERS OF THE AMERICAN INSTITUTE OF ARCHITECTS
 GERMANO RUBINO, AIA NJ # AI 08084
 JOSEPH DI CARA, AIA NJ # AI 08265
 NOT VALID FOR BUILDING UNLESS SIGNED AND SEALED BY ARCHITECT

X Board President of Schools,
 X Superintendent of Schools,

FPA FRENCH & PARRELO ASSOCIATES
 Corporate Office
 1800 Route 34, Suite 101
 Wall, NJ 07719
 732.312.9800
 Regional Offices
 Hackensack, NJ
 New York, NY

KEVIN DWYER, PE
 PROFESSIONAL ENGINEER, NJ LIC. No. 24GE03525400

BUILDING ADDITIONS AND INTERIOR RENOVATIONS AT THE :
ESSEX COUNTY WEST CALDWELL SCHOOL OF TECHNOLOGY
 620 PASSAIC AVENUE
 WEST CALDWELL, NJ 07006

ESSEX COUNTY SCHOOLS OF TECHNOLOGY

MECHANICAL PARTIAL FIRST FLOOR PLAN - AREA 'A' PIPING

SCALE AS NOTED

REV.	DATE:	DRN	CHK	
	08/14/18	LDW	KLD	ISSUED FOR BID
1	09/14/18	MK	KLD	ADDENDUM #2

STATE PROJECT NO.
1390-080-16-1000

PROJECT NO. **3003** SHEET NO. **M5.1**

PARTIAL FIRST FLOOR PLAN - AREA 'A'
 SCALE: 1/8" = 1'-0"

C:\106\107001\0713 - ECYTS\10713.002 - MEP\CADD\DWG\10713.002 - M5.1.dwg
 COPYRIGHT © 2018, FRENCH & PARRELO ASSOCIATES, P.A. - THE COPYING OR REUSE OF THIS DOCUMENT, OR PORTIONS THEREOF, WITHOUT THE WRITTEN PERMISSION OF FRENCH & PARRELO ASSOCIATES, IS PROHIBITED. DUE TO INHERENT ERRORS IN REPRODUCTION METHODS, ERRORS MAY OCCUR WHEN SCALING THIS DRAWING.