

No.	Date	Revision	Approved

ENGINEERING DEPARTMENT

JOURNAL
SQUARE
TRANSPORTATION
CENTER

MECHANICAL

Title
BUS TERMINAL
ESCALATOR REPLACEMENT

ESCALATOR No. 7
ENLARGED
CONTROLLER ROOM
PLAN AND SECTION

This drawing subject to conditions in contract. All inventions, ideas, designs and methods herein are reserved to Port Authority and may not be used without its written consent.

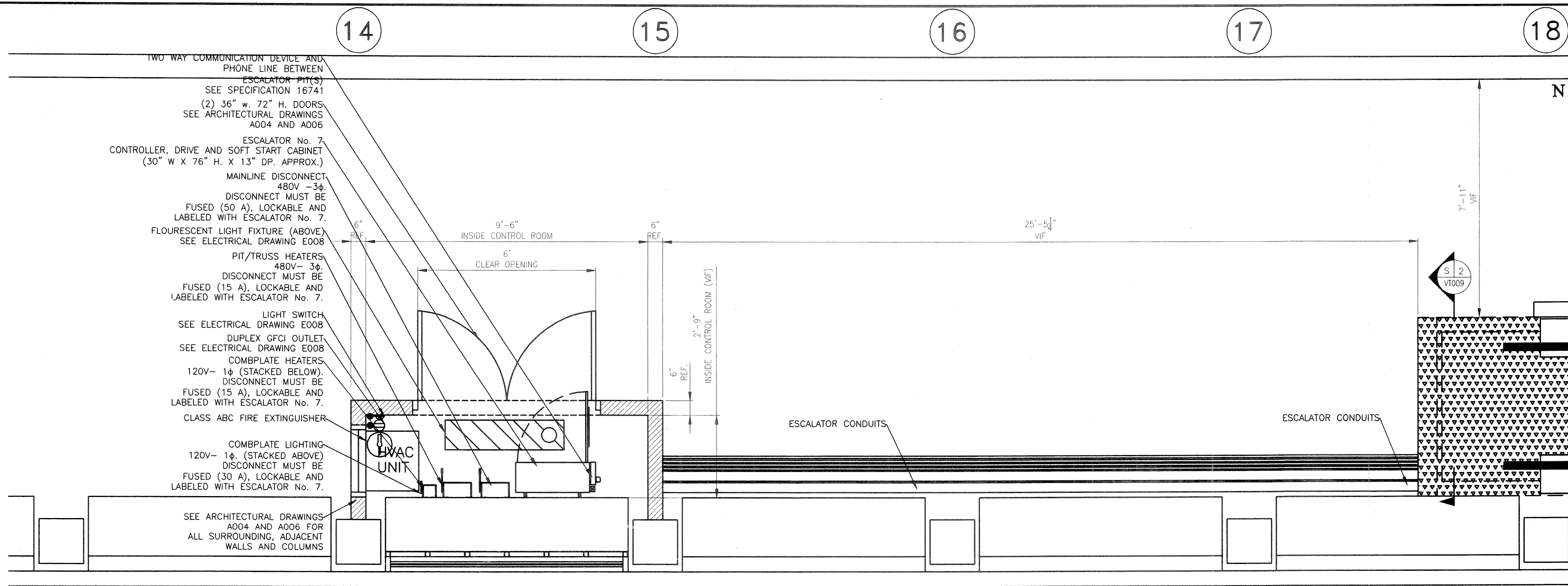
All recipients of Contract documents, including bidders and those who do not bid and their prospective subcontractors and suppliers who may receive all or a part of the Contract documents or copies thereof, shall make every effort to ensure the secure and appropriate disposal of the Contract documents to prevent further disclosure of the information contained in the documents. Secure and appropriate disposal includes methods of document destruction such as shredding or arrangements with reuse handlers that ensure that third persons will not have access to the documents' contents either before, during, or after disposal. Documents may also be returned for disposal purposes to the Contract Desk on the 3rd Floor, 3 Gateway Center, Newark NJ 07102 or the office of the Director of Procurement, One Madison Avenue, 7th Floor, New York NY 10010.

S. STEINER S. STEINER S. FITZGERALD
Designed by Drawn by Checked by

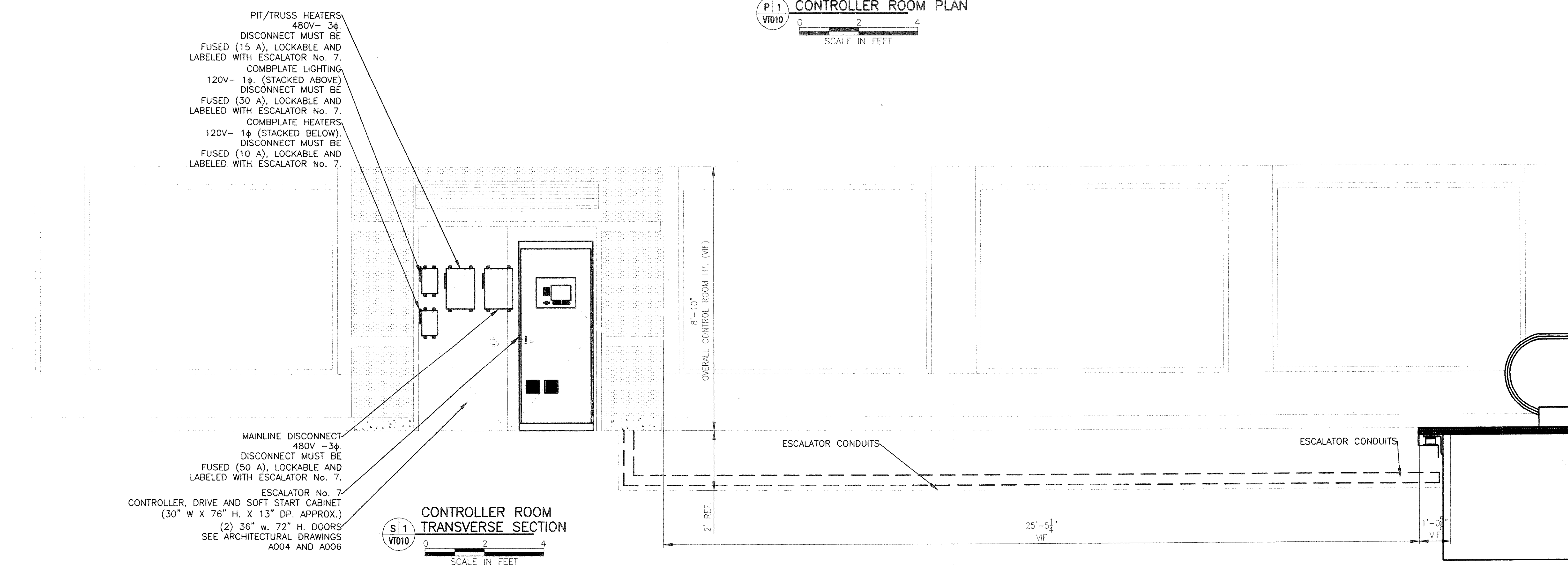
Date 11/17/2008

Contract Number **PAT-214.004**

Drawing Number **VT010**
PID# 07957000



P 1 CONTROLLER ROOM PLAN
VT010
SCALE IN FEET



S 1 CONTROLLER ROOM
TRANSVERSE SECTION
VT010
SCALE IN FEET