

Base Bid Area

- 6 ● Wireless 2 Data (Cat6A)
- 1 ● 1 Data Ephone/Courtesy (Cat6)
- 15 ● 2 Data (Cat6)
- 4 ● 4 Data (Cat6)
- 5 ● 6 Data (Cat6)

Alternate #1 Area

- 8 ● Wireless 2 Data (Cat6A)
- 1 ● 1 Data Ephone/Courtesy (Cat6)
- 18 ● 2 Data (Cat6)
- 0 ● 4 Data (Cat6)
- 0 ● 6 Data (Cat6)

DIAGRAM

PANEL BOARD RP-4B (NEW)											
BUS AMPS:			LOCATION:			ELECTRICAL ROOM			GROUND BUS:		
MAIN SIZE/TYP:			NEMA RATING:			ISOL. GROUND BUS:			COPPER		
VOLT/PHASE:			AFC VALUE:			FEED THRU LEGS:			SECTIONS:		
MOUNTING:			SURFACE:			SECTION:			SECTION:		
110AMPS			1			22,000					
120V 208 3 PH			23,000								
CKT #	CIRCUIT DESCRIPTION	BREAKER	LOAD (VA)	LOAD (VA)	LOAD (VA)	LOAD (VA)	LOAD (VA)	BREAKER	CIRCUIT DESCRIPTION	CKT #	
1	LECTURE HALL RECEPTACLES	20 1	2400-14100 IN 3/4"	1200	2400	2400	1200	20 1	LECTURE HALL RECEPTACLES	2	
2	LECTURE HALL RECEPTACLES	20 1	2400-14100 IN 3/4"	1200	2400	2400	1200	20 1	LECTURE HALL RECEPTACLES	3	
3	LECTURE HALL RECEPTACLES	20 1	2400-14100 IN 3/4"	1200	2400	2400	1200	20 1	LECTURE HALL AREA	4	
4	WAP PHO LAB	20 1	2400-14100 IN 3/4"	1200	2400	2400	1200	20 1	WAP PHO LAB	5	
5	SPARE			0	0	0	0		SPARE	6	
6	SPARE			0	0	0	0		SPARE	7	
7	SPARE			0	0	0	0		SPARE	8	
8	SPARE			0	0	0	0		SPARE	9	
9	SPARE			0	0	0	0		SPARE	10	
10	SPARE			0	0	0	0		SPARE	11	
11	SPARE			0	0	0	0		SPARE	12	
12	SPARE			0	0	0	0		SPARE	13	
13	SPARE			0	0	0	0		SPARE	14	
14	SPARE			0	0	0	0		SPARE	15	
15	SPARE			0	0	0	0		SPARE	16	
16	SPARE			0	0	0	0		SPARE	17	
17	SPARE			0	0	0	0		SPARE	18	
18	SPARE			0	0	0	0		SPARE	19	
19	SPARE			0	0	0	0		SPARE	20	
20	SPARE			0	0	0	0		SPARE	21	
21	SPARE			0	0	0	0		SPARE	22	
22	SPARE			0	0	0	0		SPARE	23	
23	SPARE			0	0	0	0		SPARE	24	
24	SPARE			0	0	0	0		SPARE	25	
25	SPARE			0	0	0	0		SPARE	26	
26	SPARE			0	0	0	0		SPARE	27	
27	SPARE			0	0	0	0		SPARE	28	
28	SPARE			0	0	0	0		SPARE	29	
29	SPARE			0	0	0	0		SPARE	30	
30	SPARE			0	0	0	0		SPARE	31	
31	SPARE			0	0	0	0		SPARE	32	
32	SPARE			0	0	0	0		SPARE	33	
33	SPARE			0	0	0	0		SPARE	34	
34	SPARE			0	0	0	0		SPARE	35	
35	SPARE			0	0	0	0		SPARE	36	
36	SPARE			0	0	0	0		SPARE	37	
37	SPARE			0	0	0	0		SPARE	38	
38	SPARE			0	0	0	0		SPARE	39	
39	SPARE			0	0	0	0		SPARE	40	
40	SPARE			0	0	0	0		SPARE	41	
41	SPARE			0	0	0	0		SPARE	42	
PER PHASE SUB-TOTALS:				3600	2400	2400	LEGENDS:				
TOTAL CONNECTED PANELBOARD (VA):				8400							
TOTAL CONNECTED PANELBOARD (AMPS):				23							
TOTAL PANELBOARD DEMAND (VA):				1							
TOTAL PANELBOARD DEMAND (AMPS):				23							

GENERAL NOTES:

1. CONNECT THE NEW STROBES AND HORN/STROBES TO NEAREST ANNUNCIATION CIRCUIT. CONNECT THE SMOKE DETECTOR TO NEAREST EXISTING INITIATING SIGNAL LOOP. ALL NEW FIRE ALARM DEVICES SHALL BE COMPATIBLE WITH EXISTING FIRE ALARM SYSTEM. RETAIN THE SERVICES OF BUILDING FIRE ALARM MAINTENANCE CONTRACTOR FOR ALL FIRE ALARM COPE OF WORK INCLUDING WIRING AND PROGRAMMING THE SYSTEM.

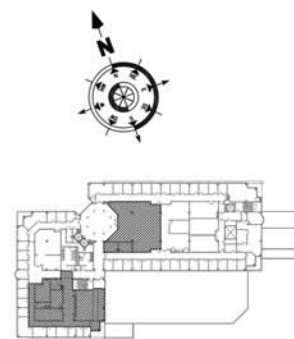
SHEET NOTES:

1. CIRCUIT WITH 2x10-1x10G IN 3/4" AND CONNECT TO EXISTING SPARE BRANCH CIRCUIT MADE AVAILABLE BY DEMOLITION.
2. PROVIDE 20AMP DISCONNECT, CIRCUIT WITH 2x10-1x10G IN 3/4" AND PROVIDE (2) POLE 20AMP BREAKER IN PANEL.
3. CONTRACTOR SHALL MAKE SURE THAT CONDUIT SHALL BE INSTALLED BELOW THE NEW STAIR RISER AND CONDUIT SHALL BE FULLY RECESSED.
4. RELOCATE EXISTING PANEL ERP-4B AND ASSOCIATED BRANCH CIRCUIT WIRING AND CONDUITS IF REQUIRED TO MAKE ROOM FOR NEW PANEL RP-4B.
5. REARRANGE EXISTING 1P-20A BRANCH CIRCUIT BREAKER AND PROVIDE NEW 3P-50A CIRCUIT BREAKER IN 3POLE SPACE MADE AVAILABLE BY REARRANGEMENT.
6. CONTRACTOR SHALL PROVIDE 2 DATA FOR WAP. PROVIDE CAT6A CABLE FROM THE OUTLET TO TELE/DATA CLOSET WITH MINIMUM 15FT OF SLACK. TERMINATED NEAR TELE/DATA CLOSET.

Total Project

- 14 ● Wireless 2 Data (Cat6A)
- 2 ● 1 Data Ephone/Courtesy (Cat6)
- 33 ● 2 Data (Cat6)
- 4 ● 4 Data (Cat6)
- 5 ● 6 Data (Cat6)

KEY PLAN:



VERSIONS		
No.	Date	Description
1.	12/19/2017	ISSUED FOR CONSTRUCTION
2.	01-18-2018	ADDENDUM #1

ikon.5
architects

Architecture
Planning
Research
Strategy

864 Mapleton Road
Princeton, NJ 08540
609.919.0099
fax 609.919.0088
www.ikon5architects.com

KeRi
ENGINEERING PC

Engineering
Energy Audit
Project Management
Sustainable Consulting
Construction Administration

911 SPRINGFIELD RD., Suite 2
UNION, NJ 07803
T : 973.866.KeRi (5374)
F : 973.866.5370
W : kerienengineering.com

N.J.I.T.
GITC

FOURTH FLOOR
CORE AREA
RENOVATIONS

SHEET TITLE:
ELECTRICAL
POWER

DATE: 12-19-2017
DRAWN BY: MB
DRAWING NO.:

E-201

1 FOURTH FLOOR PART PLAN - POWER NEW WORK
SCALE: 1/8" = 1'-0"