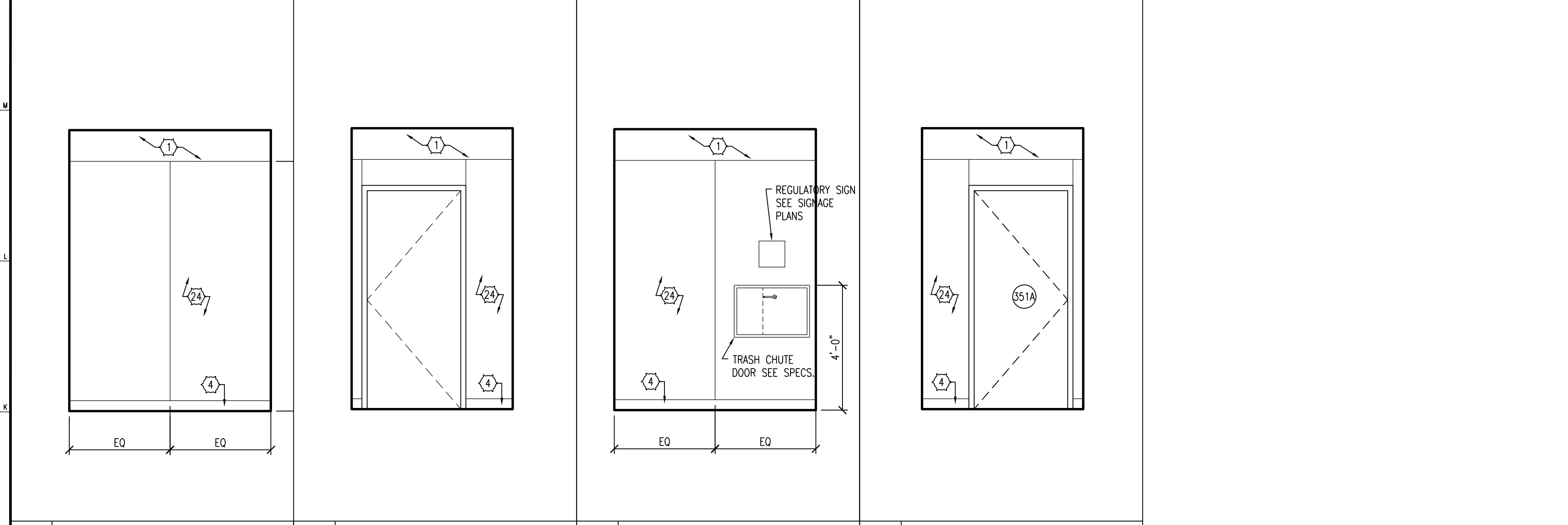
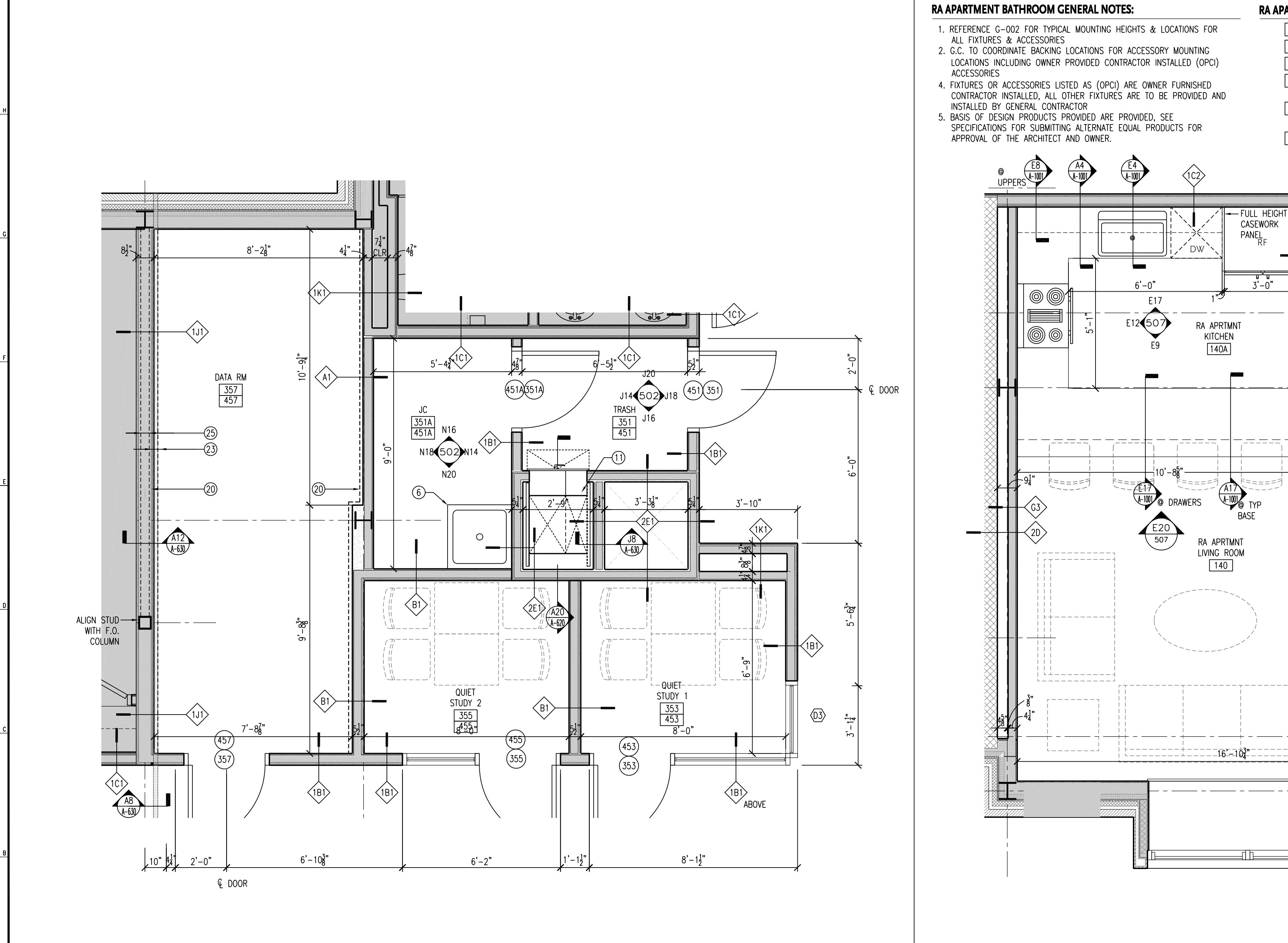


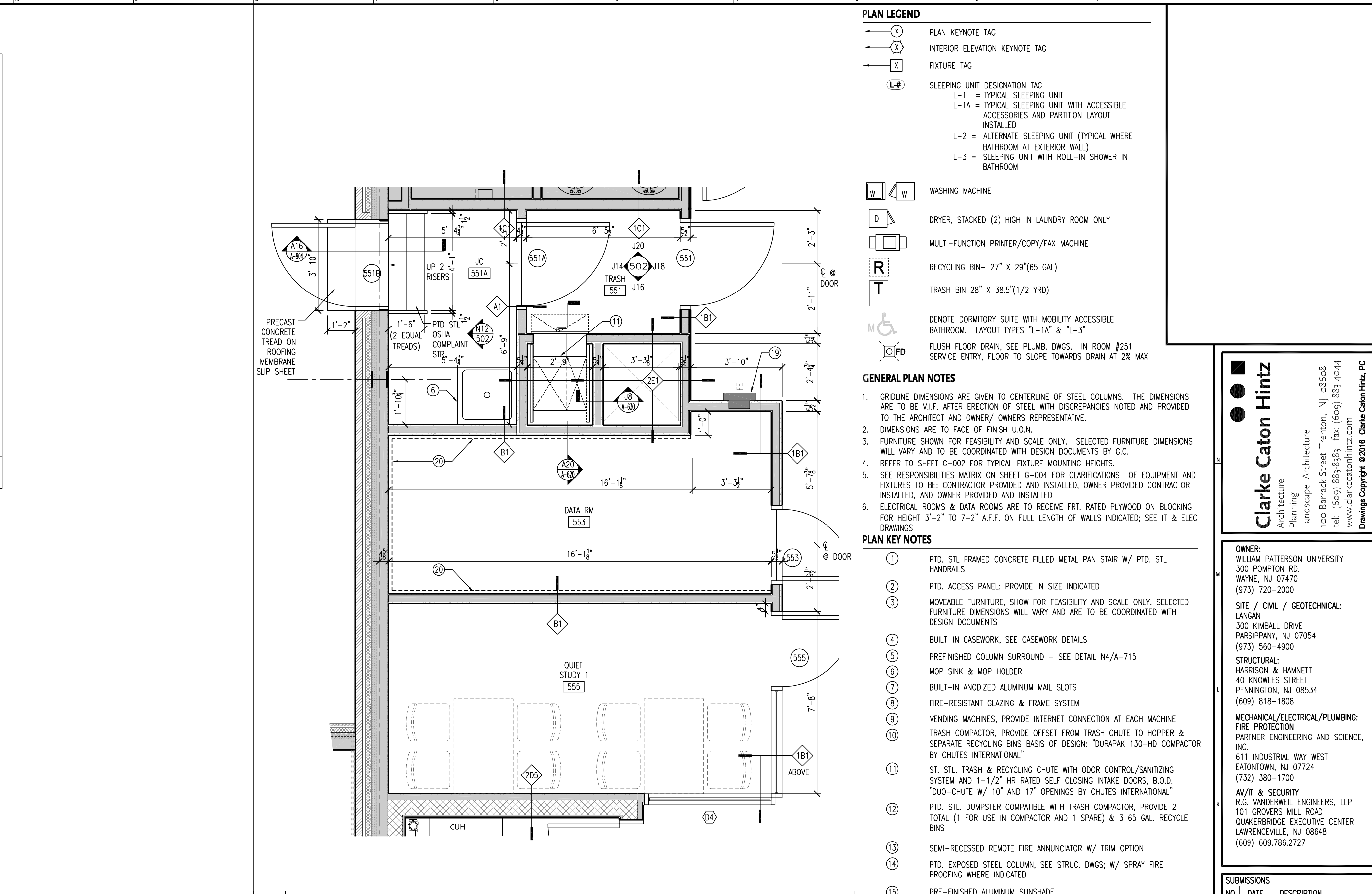
N20 JANITOR'S CLOSET SCALE: 3/8" = 1'-0"
 N18 JANITOR'S CLOSET SCALE: 3/8" = 1'-0"
 N16 JANITOR'S CLOSET SCALE: 3/8" = 1'-0"
 N14 JANITOR'S CLOSET SCALE: 3/8" = 1'-0"
 N12 JANITOR'S CLOSET SCALE: 3/8" = 1'-0"



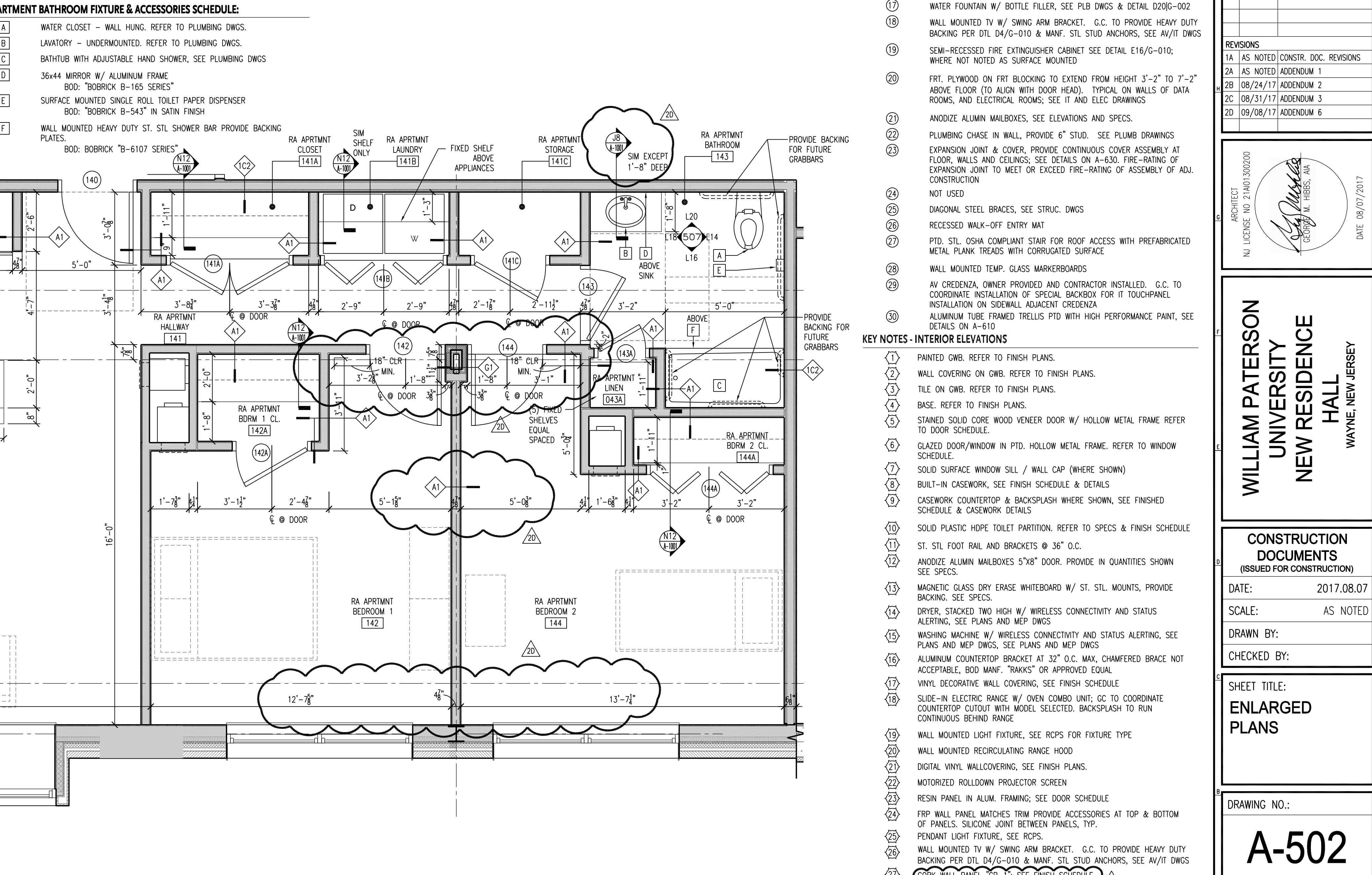
J20 TYP. TRASH ROOM SCALE: 3/8" = 1'-0"
 J18 TYP. TRASH ROOM SCALE: 3/8" = 1'-0"
 J16 TYP. TRASH ROOM SCALE: 3/8" = 1'-0"
 J14 TYP. TRASH ROOM SCALE: 3/8" = 1'-0"



A20 ENLARGED PLAN - SERVICE CORE @ THIRD AND FOURTH FLOORS SCALE: 3/8" = 1'-0"



J8 ENLARGED PLAN - SERVICE CORE @ FIFTH FLOOR SCALE: 3/8" = 1'-0"



A13 ENLARGED PLAN - RESIDENT APARTMENT SCALE: 3/8" = 1'-0"

- PLAN LEGEND**
- ① PLAN KEYNOTE TAG
 - ② INTERIOR ELEVATION KEYNOTE TAG
 - ③ FIXTURE TAG
 - ④ SLEEPING UNIT DESIGNATION TAG
 - L-1 = TYPICAL SLEEPING UNIT
 - L-1A = TYPICAL SLEEPING UNIT WITH ACCESSIBLE ACCESSORIES AND PARTITION LAYOUT INSTALLED
 - L-2 = ALTERNATE SLEEPING UNIT (TYPICAL WHERE BATHROOM AT EXTERIOR WALL)
 - L-3 = SLEEPING UNIT WITH ROLL-IN SHOWER IN BATHROOM
 - W WASHING MACHINE
 - D DRYER, STACKED (2) HIGH IN LAUNDRY ROOM ONLY
 - MFP MULTI-FUNCTION PRINTER/COPY/FAX MACHINE
 - R RECYCLING BIN - 27" X 29"(65 GAL)
 - T TRASH BIN 28" X 38.5"(1/2 YRD)
 - FD DENOTE DORMITORY SUITE WITH MOBILITY ACCESSIBLE BATHROOM. LAYOUT TYPES 1-1A" & 1-3"
 - FD FLUSH FLOOR DRAIN, SEE PLUMB. DWGS. IN ROOM #251
 - FD SERVICE ENTRY, FLOOR TO SLOPE TOWARDS DRAIN AT 2% MAX

- GENERAL PLAN NOTES**
1. GRIDLINE DIMENSIONS ARE GIVEN TO CENTERLINE OF STEEL COLUMNS. THE DIMENSIONS ARE TO BE V.I.F. AFTER ERECTION OF STEEL WITH DISCREPANCIES NOTED AND PROVIDED TO THE ARCHITECT AND OWNER/ OWNERS REPRESENTATIVE.
 2. DIMENSIONS ARE TO FACE OF FINISH U.O.N.
 3. FURNITURE SHOWN FOR FEASIBILITY AND SCALE ONLY. SELECTED FURNITURE DIMENSIONS WILL VARY AND TO BE COORDINATED WITH DESIGN DOCUMENTS BY G.C.
 4. REFER TO SHEET G-002 FOR TYPICAL FIXTURE MOUNTING HEIGHTS.
 5. SEE RESPONSIBILITIES MATRIX ON SHEET G-004 FOR CLARIFICATIONS OF EQUIPMENT AND FIXTURES TO BE CONTRACTOR PROVIDED AND INSTALLED, OWNER PROVIDED CONTRACTOR INSTALLED, AND OWNER PROVIDED AND INSTALLED.
 6. ELECTRICAL ROOMS & DATA ROOMS ARE TO RECEIVE FRIT. RATED PLYWOOD ON BLOCKING FOR HEIGHT 3'-2" TO 7'-2" A.F.F. ON FULL LENGTH OF WALLS INDICATED; SEE IT & ELEC DRAWINGS.

- PLAN KEY NOTES**
- ① PTD. STL. FRAMED CONCRETE FILLED METAL PAN STAIR W/ PTD. STL. HANDRAILS
 - ② PTD. ACCESS PANEL; PROVIDE IN SIZE INDICATED
 - ③ MOVABLE FURNITURE, SHOW FOR FEASIBILITY AND SCALE ONLY. SELECTED FURNITURE DIMENSIONS WILL VARY AND ARE TO BE COORDINATED WITH DESIGN DOCUMENTS
 - ④ BUILT-IN CASEWORK, SEE CASEWORK DETAILS
 - ⑤ PREFINISHED COLUMN SURROUND - SEE DETAIL N4/A-715
 - ⑥ MOP SINK & MOP HOLDER
 - ⑦ BUILT-IN ANODIZED ALUMINUM MAIL SLOTS
 - ⑧ FIRE-RESISTANT GLAZING & FRAME SYSTEM
 - ⑨ VENDING MACHINES, PROVIDE INTERNET CONNECTION AT EACH MACHINE
 - ⑩ TRASH COMPACTOR, PROVIDE OFFSET FROM TRASH CHUTE TO HOPPER & SEPARATE RECYCLING BINS BASIS OF DESIGN: "DURAPAK 130-HD COMPACTOR BY CHUTES INTERNATIONAL"
 - ⑪ ST. STL. TRASH & RECYCLING CHUTE WITH ODOR CONTROL/SANITIZING SYSTEM AND 1-1/2" HR RATED SELF CLOSING INWAKE DOORS, B.O.D. "D40-CHUTE W/ 10" AND 17" DRAININGS BY CHUTES INTERNATIONAL"
 - ⑫ PTD. STL. DUMPSTER COMPATIBLE WITH TRASH COMPACTOR, PROVIDE 2 TOTAL (1 FOR USE IN COMPACTOR AND 1 SPARE) & 3 65 GAL. RECYCLE BINS
 - ⑬ SEMI-RECESSED REMOTE FIRE ANNUNCIATOR W/ TRIM OPTION
 - ⑭ PTD. EXPOSED STEEL COLUMN, SEE STRUC. DWGS. W/ SPRAY FIRE PROOFING WHERE INDICATED
 - ⑮ PRE-FINISHED ALUMINUM SUNSHADE
 - ⑯ ELECTRIC TRACTION ELEVATOR W/ ADJACENT CONTROL ROOM
 - ⑰ B.O.D. "ONE MONOSPACE 500" W/ 5000 AA CAB & 3500 CAB AS SHOWN
 - ⑱ WATER FOUNTAIN W/ BOTTLE FILLER, SEE PLB DWGS & DETAIL 0206-002
 - ⑲ WALL MOUNTED TV W/ SWING ARM BRACKET, G.C. TO PROVIDE HEAVY DUTY BACKING PER DTL D4/G-010 & MANF. STL. STUD ANCHORS, SEE AV/IT DWGS
 - ⑳ SEMI-RECESSED FIRE EXTINGUISHER CABINET SEE DETAIL E16/G-010; WHERE NOT NOTED AS SURFACE MOUNTED
 - ㉑ FIRE PLYWOOD ON FRIT BLOCKING TO EXTEND FROM HEIGHT 3'-2" TO 7'-2" ABOVE FLOOR (TO ALIGN WITH DOOR HEAD). TYPICAL ON WALLS OF DATA ROOMS, AND ELECTRICAL ROOMS; SEE IT AND ELEC DRAWINGS
 - ㉒ ANODIZE ALUM. MAILBOXES, SEE ELEVATIONS AND SPECS.
 - ㉓ PLUMBING CHASE IN WALL, PROVIDE 6" STUD. SEE PLUMB DRAWINGS
 - ㉔ EXPANSION JOINT & COVER, PROVIDE CONTINUOUS COVER ASSEMBLY AT FLOOR, WALLS AND CEILING; SEE DETAILS ON A-630, FIRE-RATING OF EXPANSION JOINT TO MEET OR EXCEED FIRE-RATING OF ASSEMBLY OF ADJ. CONSTRUCTION
 - ㉕ NOT USED
 - ㉖ DIAGONAL STEEL BRACES, SEE STRUC. DWGS
 - ㉗ RECESSED WALK-OFF ENTRY MAT
 - ㉘ PTD. STL. OSHA COMPLIANT STAIR FOR ROOF ACCESS WITH PREFABRICATED METAL PLANK TREADS WITH CORRUGATED SURFACE
 - ㉙ WALL MOUNTED TEMP. GLASS MARKERBOARDS
 - ㉚ AV CREDENZA, OWNER PROVIDED AND CONTRACTOR INSTALLED, G.C. TO COORDINATE INSTALLATION OF SPECIAL BACKBOX FOR IT TOUCHSCREEN INSTALLATION ON SIDEWALL ADJACENT CREDENZA
 - ㉛ ALUMINUM TUBE FRAMED TRELIS PTD WITH HIGH PERFORMANCE PAINT, SEE DETAILS ON A-610

- KEY NOTES - INTERIOR ELEVATIONS**
- ① PAINTED GWB. REFER TO FINISH PLANS.
 - ② WALL COVERING ON GWB. REFER TO FINISH PLANS.
 - ③ TILE ON GWB. REFER TO FINISH PLANS.
 - ④ BASE, REFER TO FINISH PLANS.
 - ⑤ STAINED SOLID CORE WOOD VENEER DOOR W/ HOLLOW METAL FRAME REFER TO DOOR SCHEDULE.
 - ⑥ GLAZED DOOR/WINDOW IN PTD. HOLLOW METAL FRAME. REFER TO WINDOW SCHEDULE.
 - ⑦ SOLID SURFACE WINDOW SILL / WALL CAP (WHERE SHOWN)
 - ⑧ BUILT-IN CASEWORK, SEE FINISH SCHEDULE & DETAILS
 - ⑨ CASEWORK COUNTERTOP & BACKSPLASH WHERE SHOWN, SEE FINISHED SCHEDULE & CASEWORK DETAILS
 - ⑩ SOLID PLASTIC HDPE TOILET PARTITION. REFER TO SPECS & FINISH SCHEDULE
 - ⑪ ST. STL. FOOT RAIL AND BRACKETS @ 36" O.C.
 - ⑫ ANODIZE ALUMIN. MAILBOXES 5"X8" DOOR, PROVIDE IN QUANTITIES SHOWN SEE SPECS.
 - ⑬ MAGNETIC GLASS DRY ERASE WHITEBOARD W/ ST. STL. MOUNTS, PROVIDE BACKING, SEE SPECS.
 - ⑭ DRYER, STACKED TWO HIGH W/ WIRELESS CONNECTIVITY AND STATUS ALERTING, SEE PLANS AND MEP DWGS
 - ⑮ WASHING MACHINE W/ WIRELESS CONNECTIVITY AND STATUS ALERTING, SEE PLANS AND MEP DWGS, SEE PLANS AND MEP DWGS
 - ⑯ ALUMINUM COUNTERTOP BRACKET AT 32" O.C. MAX. CHAMFERED BRACE NOT ACCEPTABLE, BOD MANF. "BRACKS" OR APPROVED EQUAL
 - ⑰ VINYL DECORATIVE WALL COVERING, SEE FINISH SCHEDULE
 - ⑱ SLIDE-IN ELECTRIC RANGE W/ OVEN COMB. UNITS, G.C. TO COORDINATE COUNTERTOP CUTOUT WITH MODEL SELECTED. BACKSPLASH TO RUN CONTINUOUS BEHIND RANGE
 - ⑲ WALL MOUNTED LIGHT FIXTURE, SEE ROPS FOR FIXTURE TYPE
 - ⑳ WALL MOUNTED RECIRCULATING RANGE HOOD
 - ㉑ DIGITAL VINYL WALLCOVERING, SEE FINISH PLANS
 - ㉒ MOTORIZED ROLLDOWN PROJECTOR SCREEN
 - ㉓ RESIN PANEL IN ALUM. FRAMING; SEE DOOR SCHEDULE
 - ㉔ FRP WALL PANEL MATCHES TRIM PROVIDE ACCESSORIES AT TOP & BOTTOM OF PANELS. SILICONE JOINT BETWEEN PANELS. TYP.
 - ㉕ PENDANT LIGHT FIXTURE, SEE ROPS.
 - ㉖ WALL MOUNTED TV W/ SWING ARM BRACKET, G.C. TO PROVIDE HEAVY DUTY BACKING PER DTL D4/G-010 & MANF. STL. STUD ANCHORS, SEE AV/IT DWGS
 - ㉗ CORK WALL PANEL (CP-1), SEE FINISH SCHEDULE

Clarke Catton Hintz
 Architecture
 Landscape Architecture
 100 Barrack Street, Trenton, NJ 08638
 Tel: (609) 833-8383, Fax: (609) 833-0044
 www.clarkecattonhintz.com
 Drawing Copyright ©2018 Clarke Catton Hintz, PC

OWNER: WILLIAM PATTERSON UNIVERSITY
 300 POMPTON RD.
 WARREN, NJ 07070
 (973) 729-2000

SITE / CIVIL / GEOTECHNICAL: LANGAN
 300 KIMBALL DRIVE
 PARSONSPARK, NJ 07054
 (973) 560-4900

STRUCTURAL: HARRISON & HAMNETT
 40 KNOWLES STREET
 PENNINGTON, NJ 08634
 (609) 818-1808

MECHANICAL/ELECTRICAL/PLUMBING: FIRE PROTECTION PARTNER ENGINEERING AND SCIENCE, INC.
 611 INDUSTRIAL WAY WEST
 EATONTOWN, NJ 07724
 (732) 380-1700

AV/IT & SECURITY: R.G. VANDERWIEL ENGINEERS, LLP
 101 GROVERS MILL ROAD
 QUAKERTOWN EXECUTIVE CENTER
 LAWRENCEVILLE, NJ 08648
 (609) 609.786.2727

SUBMISSIONS

NO.	DATE	DESCRIPTION
1	07/14/17	CONSTRUCTION DOCUMENTS
2	08/07/17	FINAL CONSTR. DOCUMENTS

REVISIONS

NO.	DATE	DESCRIPTION
1A	AS NOTED	CONSTR. DOC. REVISIONS
2A	AS NOTED	ADDENDUM 1
2B	08/24/17	ADDENDUM 2
2C	08/31/17	ADDENDUM 3
2D	09/08/17	ADDENDUM 6

ARCHITECT
 WILLIAM PATTERSON UNIVERSITY
 NEW RESIDENCE HALL
 WAYNE, NEW JERSEY

CONSTRUCTION DOCUMENTS
 (ISSUED FOR CONSTRUCTION)

DATE: 2017.08.07
 SCALE: AS NOTED
 DRAWN BY:
 CHECKED BY:

SHEET TITLE:
ENLARGED PLANS

DRAWING NO.:
A-502

CCH PROJECT NO.: 1932