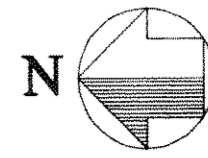


36

37

38

39

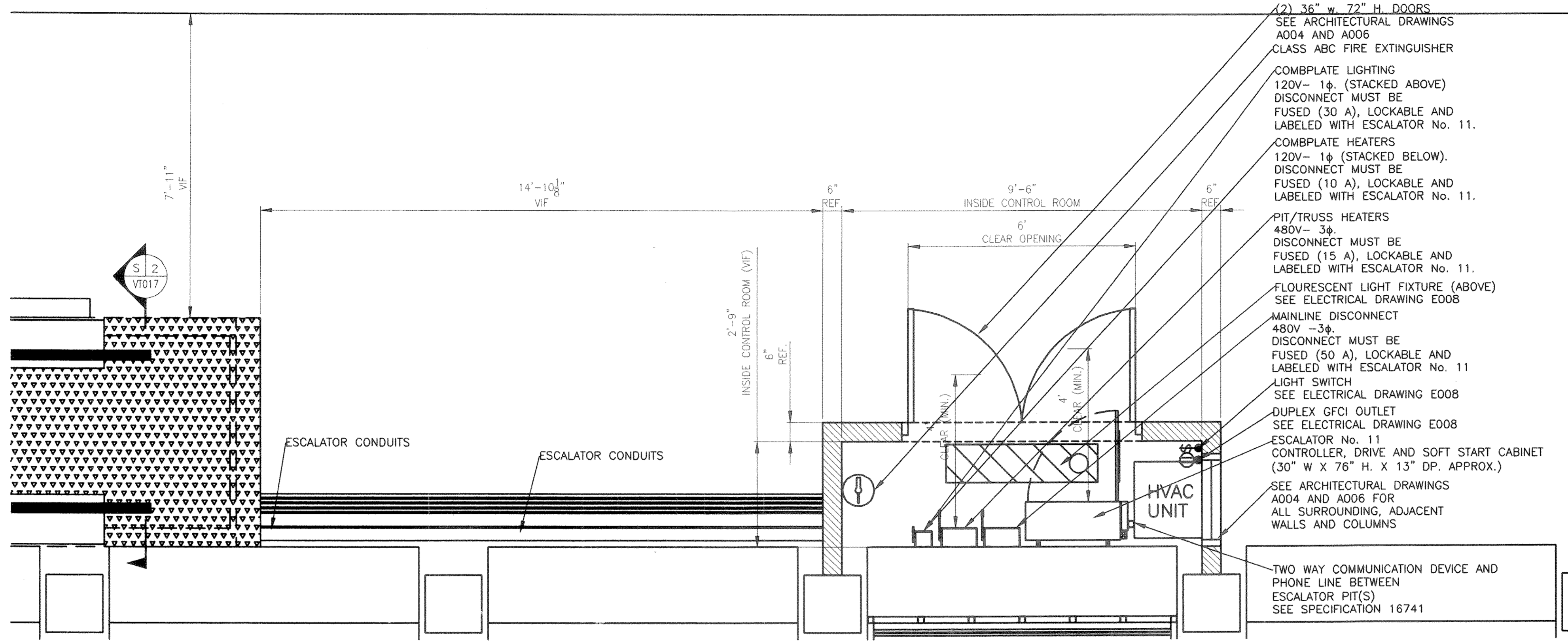


PORT AUTHORITY
TRANS-HUDSON CORPORATION

GANNETT FLEMING, P.C.
ENGINEERS AND ARCHITECTS

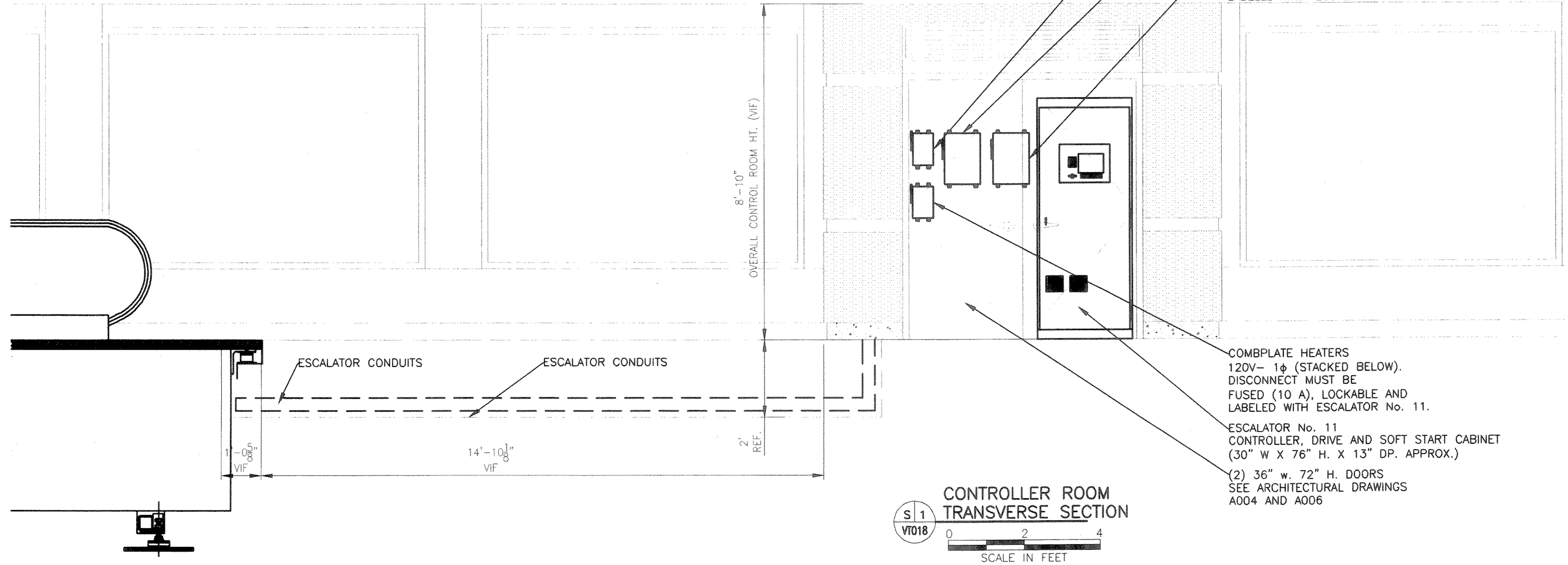
(Signature)
JOHN D. PURD

N.J. Professional Engineer # 246GE033987100



- (2) 36" w. 72" H. DOORS
SEE ARCHITECTURAL DRAWINGS
A004 AND A006
- CLASS ABC FIRE EXTINGUISHER
- COMBPLATE LIGHTING
120V- 1φ. (STACKED ABOVE)
DISCONNECT MUST BE
FUSED (30 A), LOCKABLE AND
LABELED WITH ESCALATOR No. 11.
- COMBPLATE HEATERS
120V- 1φ (STACKED BELOW).
DISCONNECT MUST BE
FUSED (10 A), LOCKABLE AND
LABELED WITH ESCALATOR No. 11.
- PIT/TRUSS HEATERS
480V- 3φ.
DISCONNECT MUST BE
FUSED (15 A), LOCKABLE AND
LABELED WITH ESCALATOR No. 11.
- FLOURESCENT LIGHT FIXTURE (ABOVE)
SEE ELECTRICAL DRAWING E008
- MAINLINE DISCONNECT
480V -3φ.
DISCONNECT MUST BE
FUSED (50 A), LOCKABLE AND
LABELED WITH ESCALATOR No. 11
- LIGHT SWITCH
SEE ELECTRICAL DRAWING E008
- DUPLEX GFCI OUTLET
SEE ELECTRICAL DRAWING E008
- ESCALATOR No. 11
CONTROLLER, DRIVE AND SOFT START CABINET
(30" W X 76" H. X 13" DP. APPROX.)
SEE ARCHITECTURAL DRAWINGS
A004 AND A006 FOR
ALL SURROUNDING, ADJACENT
WALLS AND COLUMNS
- TWO WAY COMMUNICATION DEVICE AND
PHONE LINE BETWEEN
ESCALATOR PIT(S)
SEE SPECIFICATION 16741

P 1
V1018
CONTROLLER ROOM PLAN
SCALE IN FEET



- COMBPLATE LIGHTING
120V- 1φ. (STACKED ABOVE)
DISCONNECT MUST BE
FUSED (30 A), LOCKABLE AND
LABELED WITH ESCALATOR No. 11.
- PIT/TRUSS HEATERS
480V- 3φ.
DISCONNECT MUST BE
FUSED (15 A), LOCKABLE AND
LABELED WITH ESCALATOR No. 11.
- MAINLINE DISCONNECT
480V -3φ.
DISCONNECT MUST BE
FUSED (50 A), LOCKABLE AND
LABELED WITH ESCALATOR No. 11.
- COMBPLATE HEATERS
120V- 1φ (STACKED BELOW).
DISCONNECT MUST BE
FUSED (10 A), LOCKABLE AND
LABELED WITH ESCALATOR No. 11.
- ESCALATOR No. 11
CONTROLLER, DRIVE AND SOFT START CABINET
(30" W X 76" H. X 13" DP. APPROX.)
- (2) 36" w. 72" H. DOORS
SEE ARCHITECTURAL DRAWINGS
A004 AND A006

S 1
V1018
**CONTROLLER ROOM
TRANSVERSE SECTION**
SCALE IN FEET

No.	Date	Revision	Approved
-----	------	----------	----------

ENGINEERING DEPARTMENT		
JOURNAL SQUARE TRANSPORTATION CENTER		
MECHANICAL		
Title		
BUS TERMINAL ESCALATOR REPLACEMENT		
ESCALATOR No. 11 ENLARGED CONTROLLER ROOM PLAN AND SECTION		

This drawing subject to conditions in contract. All inventions, ideas, designs and methods herein are reserved to Port Authority and may not be used without its written consent.

All recipients of Contract documents, including bidders and those who do not bid and their prospective subcontractors and suppliers who may receive all or a part of the Contract documents or copies thereof, shall make every effort to ensure the secure and appropriate disposal of the Contract documents to prevent further disclosure of the information contained in the documents. Secure and appropriate disposal includes methods of document destruction such as shredding or arrangements with refuse handlers that ensure that third persons will not have access to the documents' contents either before, during, or after disposal. Documents may also be returned for disposal purposes to the Contract Desk on the 3rd Floor, 3 Gateway Center, Newark, NJ 07102 or the office of the Director of Procurement, One Madison Avenue, 7th Floor, New York, NY 10010.

S. STEINER	S. STEINER	S. FITZGERALD
Designed by	Drawn by	Checked by
Date	11/17/2008	
Contract Number	PAT-214.004	
Drawing Number	VT018	
	PID# 07957000	