

L10 & L13 TYPE "C" LIGHTING FIXTURE LAYOUTS

TMG REF DWG : 108813\_REFCLGH.dwg

**UNION COUNTY COLLEGE  
LESSNER FIRST FLOOR ADDITION &  
FIRST FLOOR & LOWER LEVEL  
REHABILITATION**

12 WEST JERSEY STREET  
ELIZABETH, NJ 07202

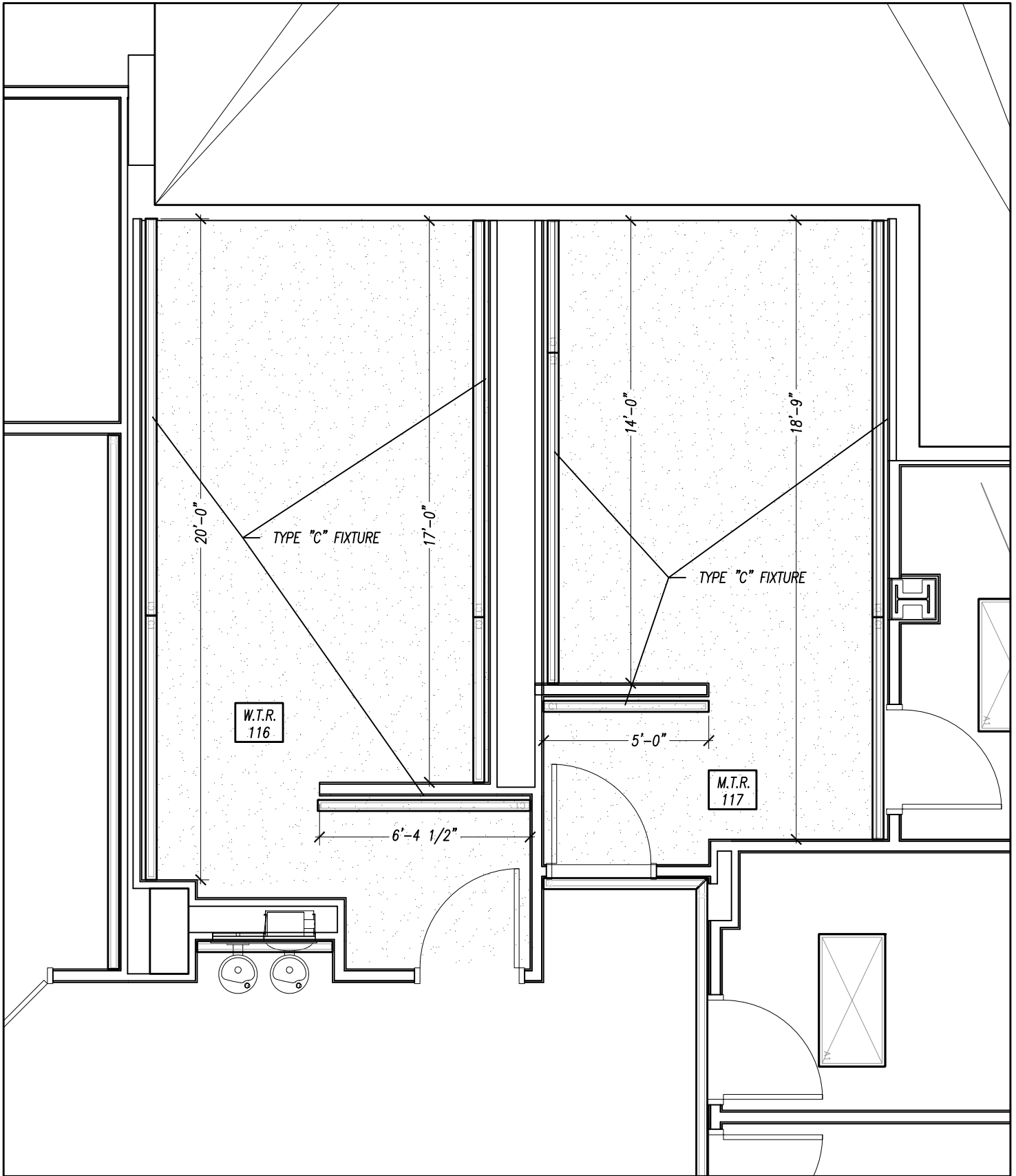
2-5-2017

Project # 108813

SCALE: 1/4" = 1'-0"

**SK-64**

191 Mill Lane Mountainside, NJ 07092 p. 908.232.2860 f. 908.232.2845



TYPE "C" VISIBLE FLANGE LAYOUT

REF: A112

TMG REF DWG: 108813\_Sectionbase01.dwg

**UNION COUNTY COLLEGE  
LESSNER FIRST FLOOR ADDITION &  
FIRST FLOOR & LOWER LEVEL  
REHABILITATION**

12 WEST JERSEY STREET  
ELIZABETH, NJ 07202

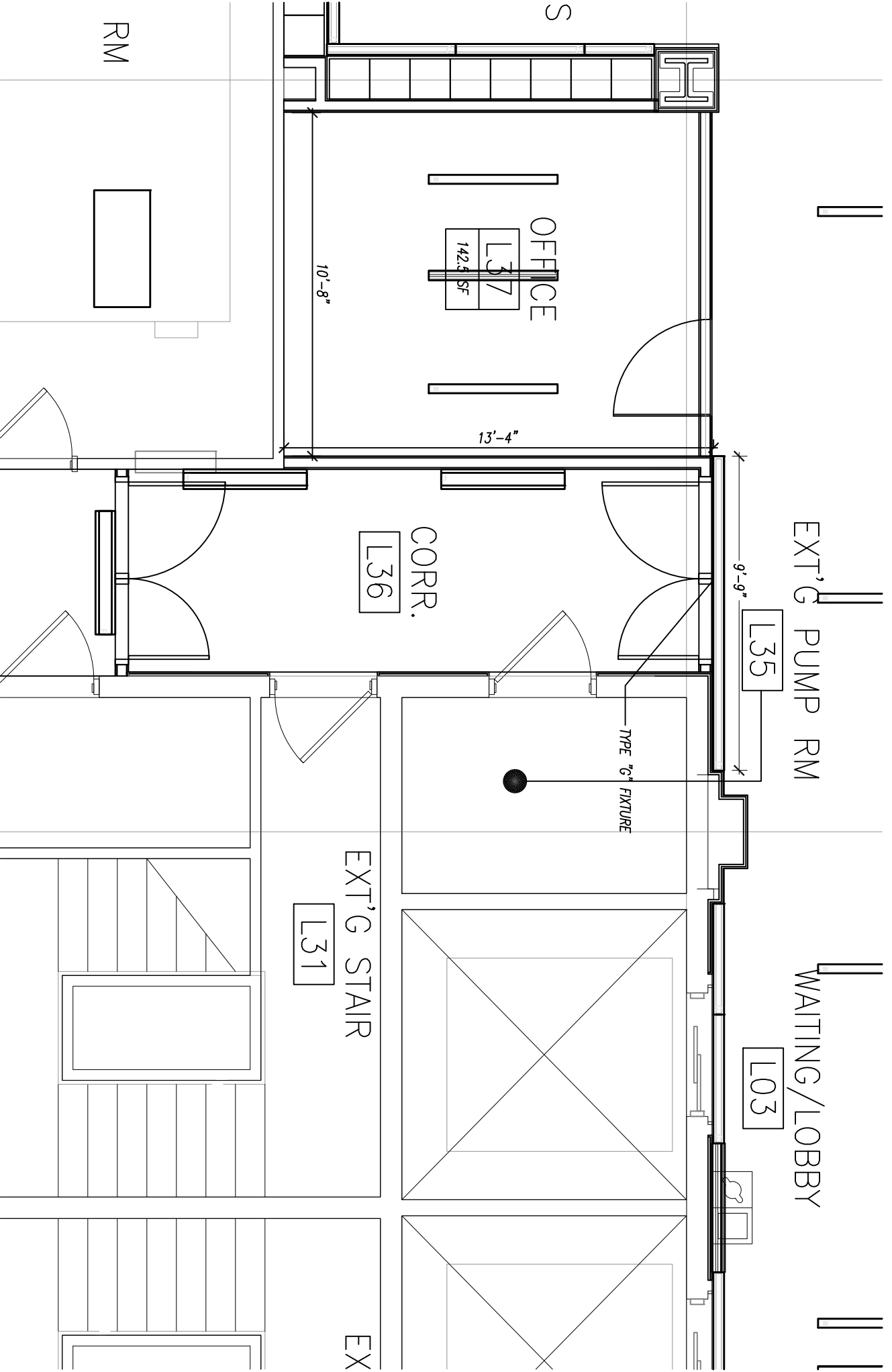
2-5-2017

Project # 108813

SCALE: 3/16" = 1'-0"

**SK-64b**

191 Mill Lane Mountainside, NJ 07092 p. 908.232.2860 f. 908.232.2845



L03 TYPE "G" LIGHTING FIXTURE LAYOUTS

TMG REF DWG: 108813\_REFCLG.dwg  
 UNION COUNTY COLLEGE  
 LESSNER FIRST FLOOR ADDITION &  
 FIRST FLOOR & LOWER LEVEL  
 REHABILITATION

12 WEST JERSEY STREET  
 ELIZABETH, NJ 07202

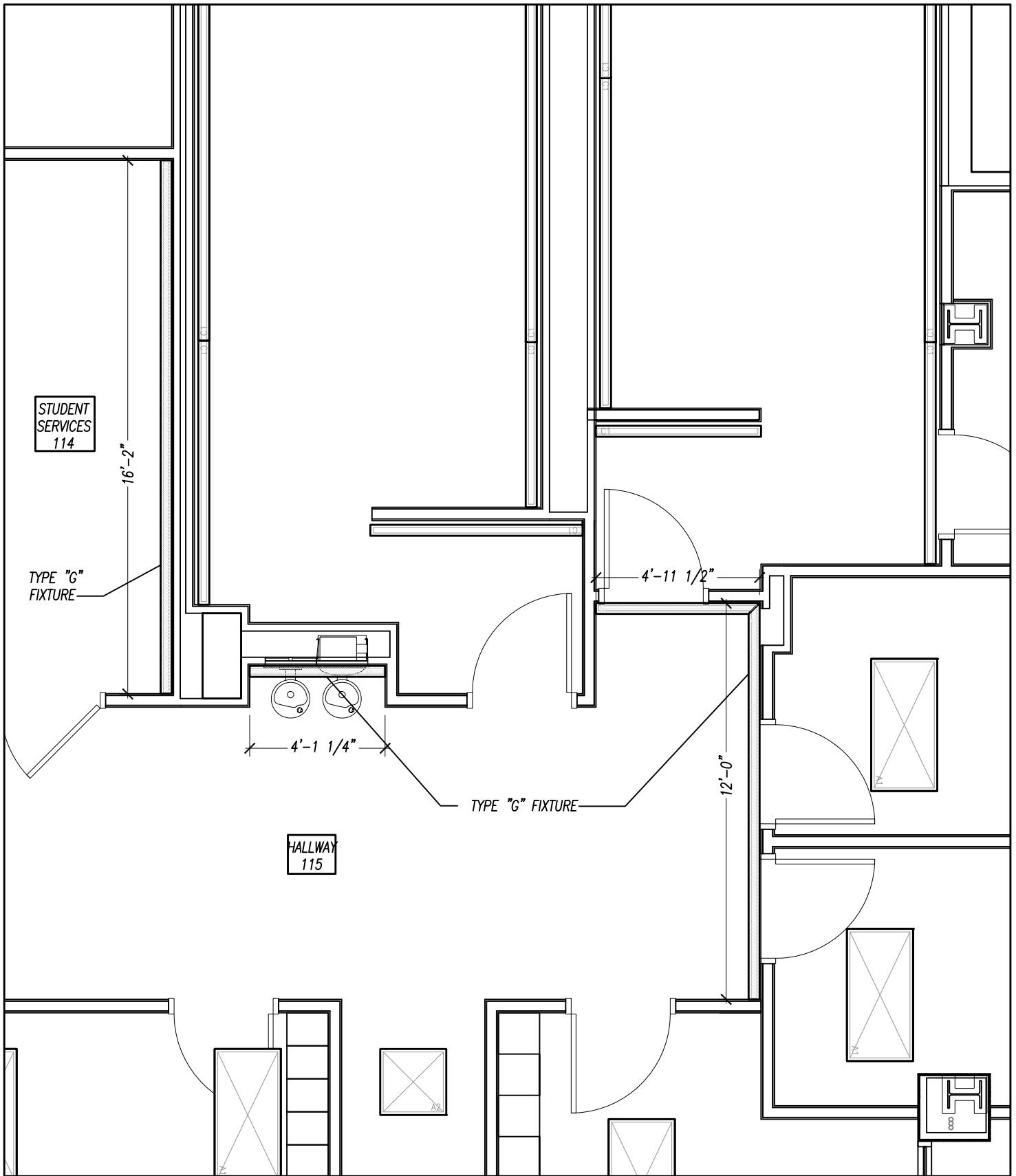
2-1-2017

Project # 108813

SCALE: 1/4" = 1'-0"

**SK-64C**

191 Mill Lane Mountfield, NJ 07092 P. 908.232.2860 F. 908.232.2845



TYPE "G" HALLWAY 115 &

REF: A112

TMG REF DWG: 108813\_Sectionbase01.dwg

**UNION COUNTY COLLEGE  
LESSNER FIRST FLOOR ADDITION &  
FIRST FLOOR & LOWER LEVEL  
REHABILITATION**

12 WEST JERSEY STREET  
ELIZABETH, NJ 07202

2-5-2017

Project # 108813

SCALE: 3/16" = 1'-0"

**SK-64D**

191 Mill Lane Mountainside, NJ 07092 p. 908.232.2860 f. 908.232.2845