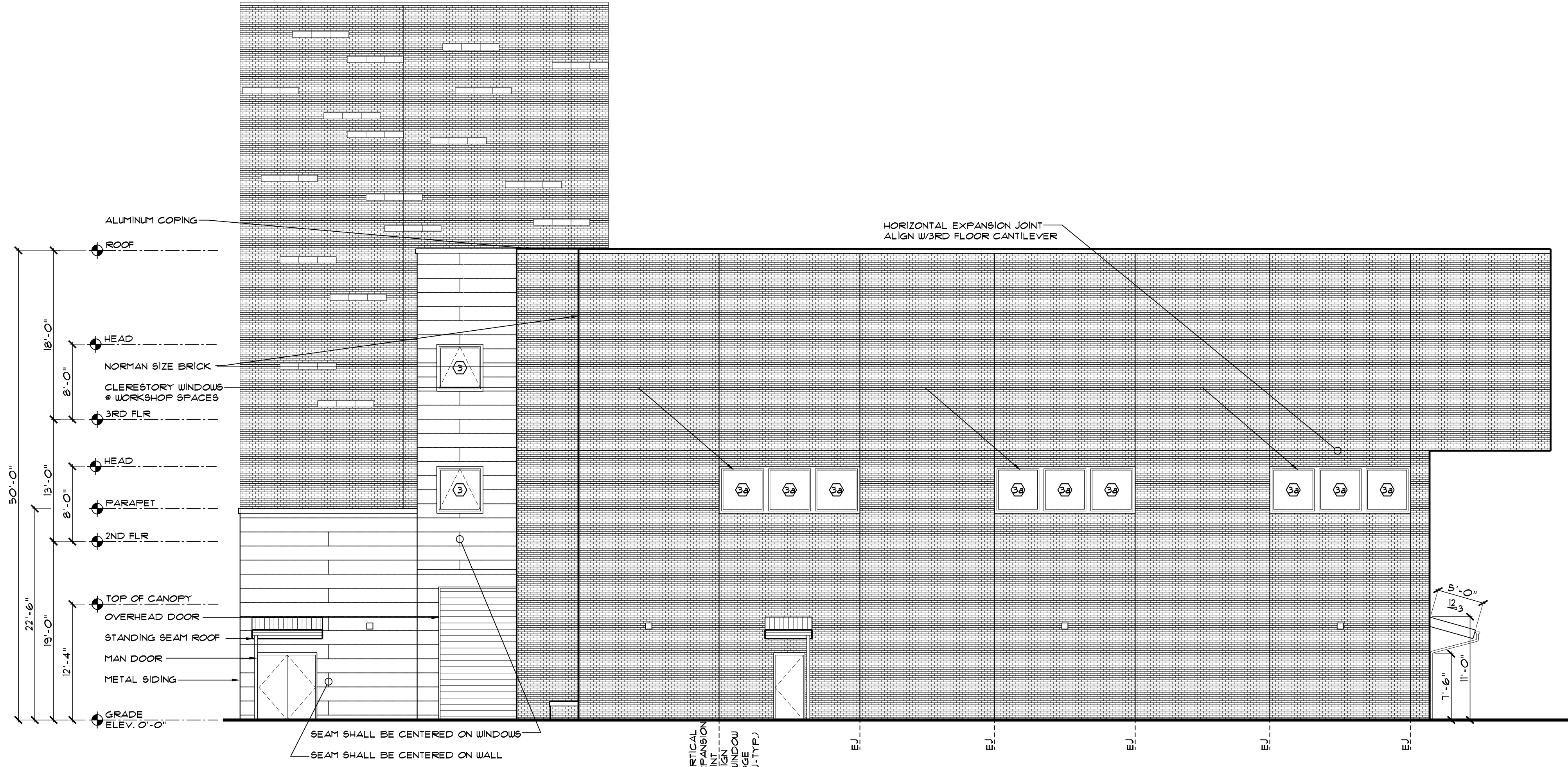


1 NORTH ELEVATION
SCALE: 1/8" = 1'-0"



2 SOUTH ELEVATION
SCALE: 1/8" = 1'-0"

- BRICK**
- BRICK PATTERN ON ELEVATIONS IS FOR GRAPHIC PURPOSES ONLY & DOES NOT DEPICT ACTUAL SIZE OR COURSING
 - MANUFACTURER: MCAVOY BRICK COMPANY
 - SIZE: NORMAN 2 1/4" X 1 1/8" X 3 5/8"
 - COLOR: 2 RIVER BLEND (JAMESTOWN, 90%, & VALLEY FORGE, 10%)
- MORTAR**
- MANUFACTURER: WORKRITE
COLOR: WR2906 OLDE COLONY
TYPE: S
- CAST STONE**
- MANUFACTURER: ARRIORRAFT
 - PRODUCT: CALCIUM SILICATE MASONRY UNIT
 - SIZE: 1 3/8" X 2 3/8" X 5 1/2" W/CHAMFER
 - COLOR: WHITE
- SUBMIT SHOP DRAWING OF PATTERN TO ARCHITECT FOR REVIEW & APPROVAL PRIOR TO FABRICATION & INSTALLATION OF CAST STONE
 - PROVIDE BOND BREAK W/SURROUNDING BRICKWORK USING NO. 15 ASPHALT FELT OR FLASHING
 - SHALL BE LAID IN RANDOM PATTERN ON NORTH & EAST WALLS ONLY W/SPACING, VERTICALLY & HORIZONTALLY, CONSISTENT W/EXISTING BUILDING
 - NORTH FACADE SHALL RECEIVE (20) CAST STONE UNITS
 - EAST FACADE SHALL RECEIVE (32) CAST STONE UNITS
 - NO (2) CAST STONE UNITS SHALL BE LESS THAN (12) BRICK COURSES, VERTICALLY, FROM EACH OTHER
 - NO (2) CAST STONE UNITS SHALL BE LESS THAN (6) BRICK UNITS, HORIZONTALLY, FROM EACH OTHER WHEN STONE IS AT THE SAME COURSE
 - SHALL NOT EXTEND THRU A VERTICAL OR HORIZONTAL EXPANSION JOINT
 - SEE SHEET A-4.11 FOR CAST STONE PROFILE
- EXPANSION JOINTS (EJ)**
- LOCATE AS INDICATED ON ELEVATIONS & AT ALL INSIDE CORNERS
 - VERTICAL EXPANSION JOINT SHALL EXTEND FROM TOP OF FOUNDATION TO TOP OF BRICKWORK OR HORIZONTAL EXPANSION JOINT
 - HORIZONTAL EXPANSION JOINT SHALL ALIGN W/BOTTOM OF STRUCTURE @ 3RD FLOOR CANTILEVER W/SELF ANGLE PLACED ABOVE (SEE STRUCTURAL)
 - EXPANSION JOINTS SHALL HAVE
 - 1/2" (MIN.) DEEP (OR 1/2 WIDTH OF EXPANSION JOINT) POLYURETHANE ELASTOMERIC SEALANT (GRADE NS, USE M, ASTM C920, CLASS 50) APPLIED W/PRIMER
 - CIRCULAR FOAM BACKER-ROD BEHIND SEALANT
 - EXPANSION JOINTS SHALL BE FULL JOINT DEPTH
 - MORTAR, TIES OR WIRE REINFORCEMENT SHOULD NOT EXTEND INTO OR BRIDGE THE EXPANSION JOINT