

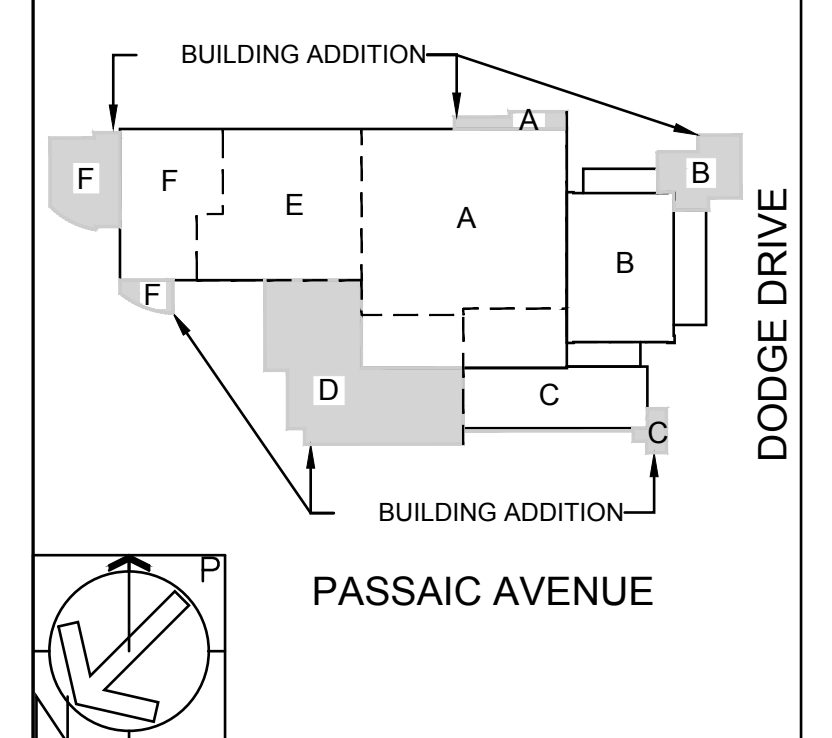
PARTIAL FIRST FLOOR PLAN - AREA 'A' LOW VOLTAGE
SCALE: 1/8" = 1'-0"

SHEET NOTES:

1. CONTRACTOR SHALL COORDINATE WIRING DEVICE MOUNTING HEIGHTS WITH THE ARCHITECT PRIOR TO ROUGH-IN.
2. PROVIDE 2#12 & 1#12EG IN 3/4" CONDUIT FOR CLOCKS TO NEAREST UNSWITCHED 120V CIRCUIT. VERIFY IN THE FIELD.
3. NEW DATA/TELEPHONE OUTLETS AT EXISTING TO REMAIN MASONRY WALLS SHALL BE SURFACE MOUNTED. PROVIDE SURFACE METAL RACEWAY TO NEW OUTLET. PAINT EXPOSED RACEWAY TO MATCH ADJACENT FINISH.

KEY NOTES

- 1 FLOOR BOX FOR X-RAY MACHINE/METAL DETECTOR. COORDINATE EXACT LOCATION IN THE FIELD PRIOR TO INSTALLATION.
- 2 PROVIDE 2" EMPTY CONDUIT SLEEVES FOR LOW VOLTAGE CABLE. COORDINATE EXACT LOCATIONS IN THE FIELD.
- 3 PROVIDE CONCEALED JUNCTION BOX ON SECURE SIDE OF DOOR IN AN ACCESSIBLE AREA. PROVIDE 3/4" EMPTY CONDUIT WITH PULL STRING TO ACCESSIBLE HUNG CEILING. PROVIDE 3/4" EMPTY CONDUIT WITH PULL STRING TO DOOR JAM CONCEALED IN FRAMING. COORDINATE EXACT LOCATIONS WITH ARCHITECTURAL DOOR FRAME DRAWINGS AND JOHNSTON SECURITY SUBMITTALS. ALL SECURITY COMMUNICATION WIRING SHALL BE PROVIDED BY JOHNSTON COMMUNICATION.
- 4 PROVIDE 4" EMPTY CONDUIT SLEEVES FOR LOW VOLTAGE CABLE. COORDINATE EXACT LOCATIONS IN THE FIELD.
- 5 PROVIDE JUNCTION BOX FOR BURGLAR ALARM PANEL AND 3/4" EMPTY CONDUIT WITH PULL STRING TO ACCESSIBLE HUNG CEILING. INTERCONNECT BURGLAR PANEL INTO SECURITY SYSTEM. PROVIDE MANUFACTURER'S RECOMMENDED WIRING TO MONITOR ALL EXTERIOR DOORS OF INTRUSION.
- 6 PROVIDE (1) 1" CONDUIT WITH PULL STRINGS. FOR SECURITY WIRING BY JOHNSTON, FROM BOLLARD TO ABOVE ACCESSIBLE CEILING. CONDUITS SHALL BE BURIED MINIMUM 12" UNDERGROUND. COORDINATE INSTALLATION WITH ARCHITECTURAL DRAWINGS AND DOOR MANUFACTURER.
- 7 PROVIDE JUNCTION BOX FOR FURNITURE SYSTEM AND 3/4" EMPTY CONDUIT WITH PULL STRING TO DESK CONNECTIONS.



di cara | rubino
architects
30 galesi drive
wayne, nj 07470
tel 973.256.0202 | fax 973.256.0227

MEMBERS OF THE AMERICAN INSTITUTE OF ARCHITECTS

GERMANO RUBINO, AIA NJ # AI 08084
JOSEPH DI CARA, AIA NJ # AI 08265

NOT VALID FOR BUILDING UNLESS SIGNED AND SEALED BY ARCHITECT

X _____
Board President of Schools,

X _____
Superintendent of Schools,

FPA
FRENCH & PARRELLO
ASSOCIATES
Corporate Office
1800 Route 34, Suite 101
Wall, NJ 07719
732.312.9800
Regional Offices
Hackettstown, NJ
New York, NY

AMIN H. GOMAA, PE
PROFESSIONAL ENGINEER, N.J. LIC. No. 24GE0442100

BUILDING ADDITIONS AND INTERIOR RENOVATIONS AT THE :

ESSEX COUNTY WEST CALDWELL SCHOOL OF TECHNOLOGY
620 PASSAIC AVENUE
WEST CALDWELL, NJ 07006

ESSEX COUNTY SCHOOLS OF TECHNOLOGY

ELECTRICAL
PARTIAL FIRST FLOOR
PLAN - AREA 'A' LOW VOLTAGE

SCALE AS NOTED

REV.	DATE:	DRN	CHK	
	08/14/18	JEB	AHG	ISSUED FOR BID
1	09/14/18	NGE	AHG	ADDENDUM #2
2	10/02/18	JPC	AHG	ADDENDUM #3

STATE PROJECT NO.
1390-080-16-1000

PROJECT NO. SHEET NO.
3003 E7.1

\\fpa\ideas\10K\10700\10713 - Essex\10713.002 - Map\CADD\DWG\10713.002 - E7.1.dwg

© 2018 FRENCH & PARRELLO ASSOCIATES, PA. THE COPYING OR REUSE OF THIS DOCUMENT, OR PORTIONS THEREOF, WITHOUT THE WRITTEN PERMISSION OF FRENCH & PARRELLO ASSOCIATES, PA IS PROHIBITED. DUE TO INHERENT ERRORS IN REPRODUCTION METHODS, ERRORS MAY OCCUR WHEN SCALING THIS DRAWING.