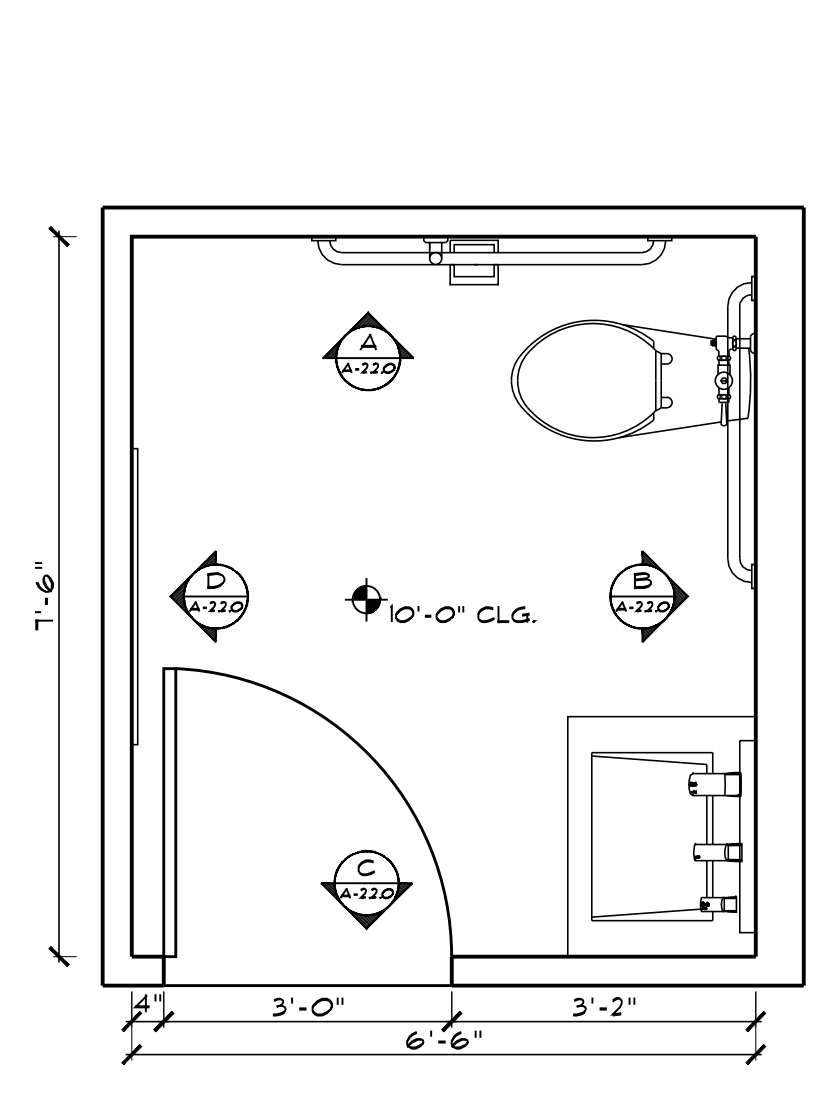
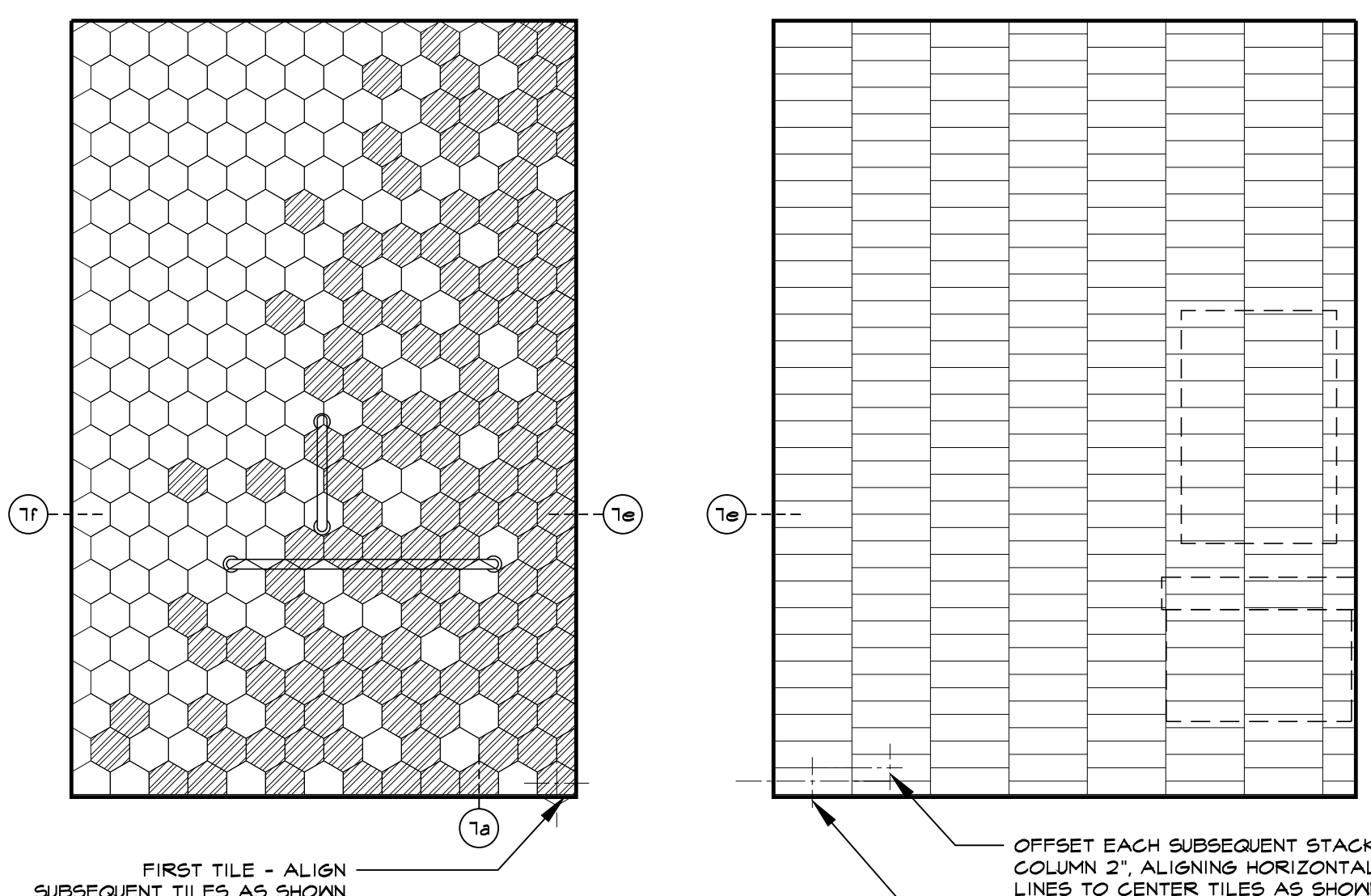


- 1 RESTROOM ELEVATIONS**
SCALE: 1/8" = 1'-0"
- PROVIDE SOLID BLOCKING IN WALL BEHIND SINK. ALL ACCESSORIES & GRAB BARS
- ACCESSORY LEGEND**
(NOTE: NOT ALL USED IN THIS RESTROOM)
- GRAB BAR - 18" X 1 1/2" DIA. BOBRICK, OR EQUAL
A B-6806.99X18
18 GA. 304 STAINLESS STEEL, CONCEALED FLANGES SATIN FINISH
 - GRAB BAR - 36" X 1 1/2" DIA. BOBRICK, OR EQUAL
B B-6806.99X36
18 GA. 304 STAINLESS STEEL, CONCEALED FLANGES SATIN FINISH
 - GRAB BAR - 42" X 1 1/2" DIA. BOBRICK, OR EQUAL
C B-6806.99X42
18 GA. 304 STAINLESS STEEL, CONCEALED FLANGES SATIN FINISH
 - GRAB BAR - 30 1/2" W X 15 1/2" D X 1 1/2" DIA. BOBRICK, OR EQUAL
D B-6806.193
18 GA. 304 STAINLESS STEEL, CONCEALED FLANGES SATIN FINISH
 - MULTI-ROLL TOILET TISSUE DISPENSER - CONTURA SERIES SURFACE MOUNTED BOBRICK, OR EQUAL
E B-4286
STAINLESS STEEL SATIN FINISH
 - SANITARY NAPKIN DISPOSAL - CONTURA SERIES SURFACE MOUNTED BOBRICK, OR EQUAL (WOMEN'S RESTROOM ONLY)
F B-210
STAINLESS STEEL SATIN FINISH
 - MIRROR - PARIS, GALAXY EDGE LIT MIRROR 24"X36", 6000K DAYLIGHT COLOR (OR EQUAL)
G
 - MIRROR - PARIS, GALAXY EDGE LIT MIRROR 40"X85", 6000K DAYLIGHT COLOR (OR EQUAL)
H
 - HORIZONTAL RECESSED MOUNTED BABY CHANGING STATION BOBRICK KOALA MODEL, OR EQUAL
I KB10-SSRE
STAINLESS STEEL
 - STALL PARTITION BOBRICK METRO SERIES, OR EQUAL
J 1516.4, FLOOR ANCHORED, HIGH PRESSURE LAMINATE, WILSONART 4886-38 FINE VELVET FINISH, STANDARD CONCEALED STAINLESS STEEL HARDWARE
 - URINAL PARTITION BOBRICK METRO SERIES, OR EQUAL
K 1559.6.4, 48" WALL HUNG, HIGH PRESSURE LAMINATE, WILSONART 4886-38 FINE VELVET FINISH, STANDARD CONCEALED STAINLESS STEEL HARDWARE
 - SINK - SLOAN AER-DEC INTEGRATED SINK SYSTEM (OR SIMILAR)
L STANDARD 30", STANDARD MOUNTING, HARD WIRED, STANDARD SS. FAUCETS, STRAIGHT EDGE, CORIAN GLACIER WHITE COUNTER AND BASIN
 - SINK - SLOAN AER-DEC INTEGRATED SINK SYSTEM (OR SIMILAR)
M STANDARD 30", 3 BASIN, STANDARD MOUNTING, HARD WIRED, STANDARD SS. FAUCETS, STRAIGHT EDGE, CORIAN GLACIER WHITE COUNTER AND BASIN



2 RESTROOM PLAN #106
SCALE: 1/8" = 1'-0"



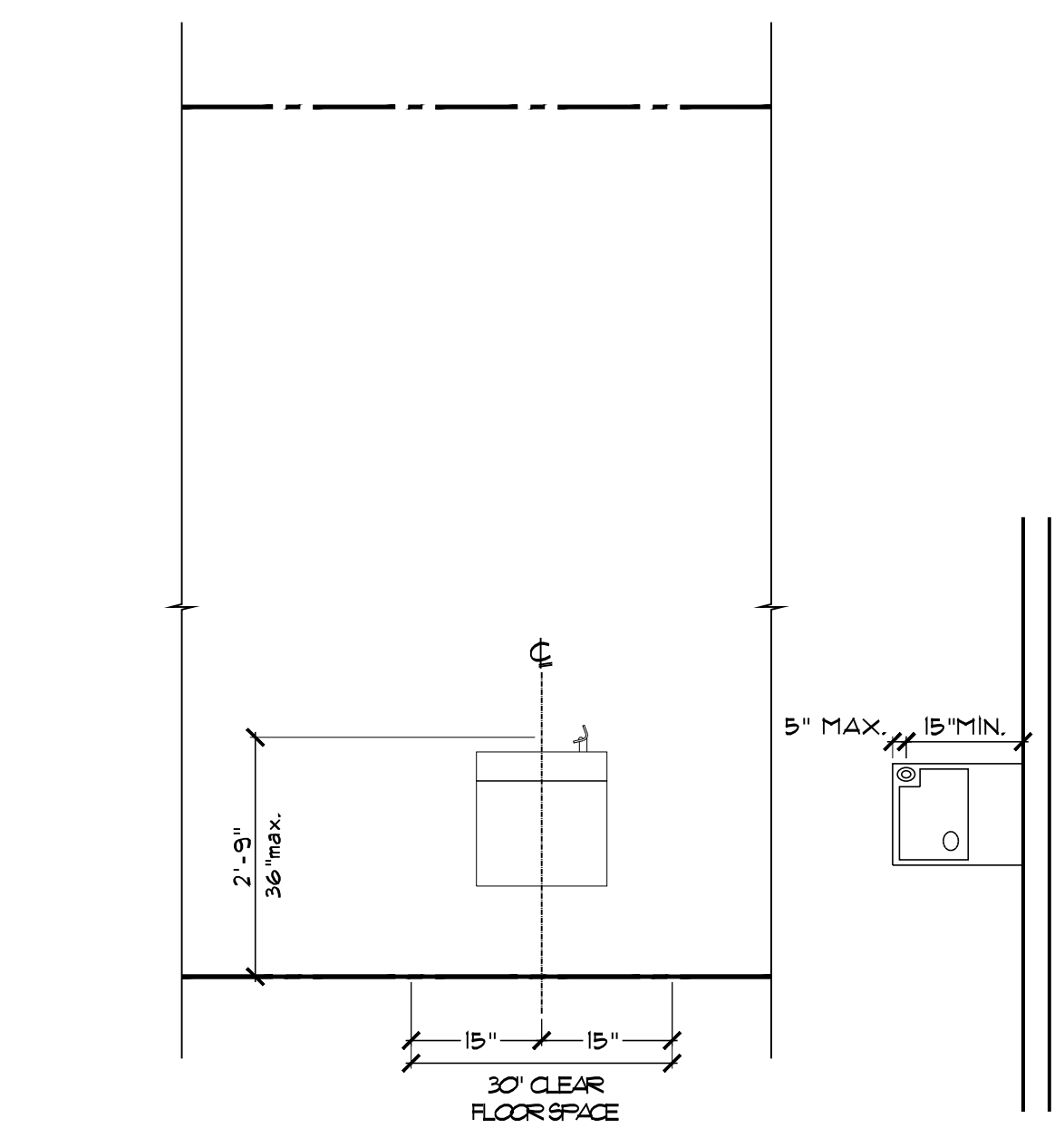
3 WALL A - TILING LAYOUT
SCALE: 1/8" = 1'-0"

4 WALL B - TILING LAYOUT
SCALE: 1/8" = 1'-0"

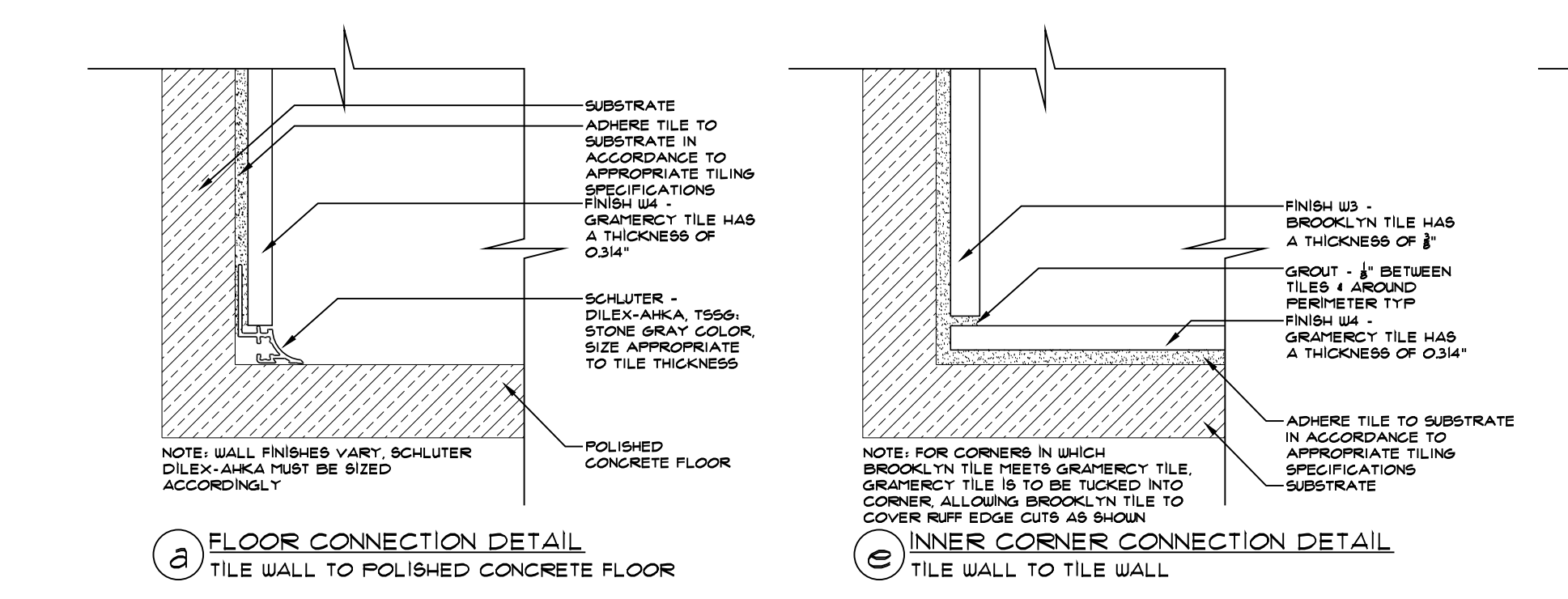
- FINISH W3 - NEMO TILE, BROOKLYN (PORCELAIN) COLLECTION, DUMBO (BLACK), FULL COVERAGE (4"X12"X3/8")
 - FINISH W4 - NEMO TILE, GRAMERCY (PORCELAIN) COLLECTION - DECOR MIX BIANCO (5.9"X6.1"X0.314") HEXAGON, 11 VARIOUS GRAPHICS COME PREMIXED IN BOXES, FULL RANDOM TILE FROM BOX, DO NOT ATTEMPT TO CREATE PATTERN OR MATCH TILES TOGETHER.
 - FINISH W5 - NEMO TILE, GRAMERCY (PORCELAIN) COLLECTION - BIANCO MATTE (WHITE) 5.9"X6.1" HEXAGON
- GROUT - BOSTIK HYDROMENT DRY TILE GROUT, H144 (MISTY GREY), SANDED, 1/8" BETWEEN TILES & AROUND PERIMETER TYP
- REMAINING RESTROOM WALLS FINISHED WITH W6 PAINT, B2 BASE, AND SCHLUTER - DILEX-AHKA, T560, STONE GRAY COLOR, SIZE APPROPRIATE TO TILE THICKNESS



5 RESTROOM VISUALIZATION
SCALE: NOT TO SCALE



6 WATER SPOUT ELEVATION AND PLAN
SCALE: 1/8" = 1'-0"



7 RESTROOM TILE DETAILS
SCALE: 6" = 1'-0"