

GANNETT FLEMING, P.C.  
ENGINEERS AND ARCHITECTS

JOHN D. PURD  
N.J. Professional Engineer # 240E03967100

No.	Date	Revision	Approved

ENGINEERING DEPARTMENT

JOURNAL SQUARE  
TRANSPORTATION CENTER

MECHANICAL

Title  
BUS TERMINAL ESCALATOR REPLACEMENT

MECHANICAL  
SCHEDULE AND DETAILS

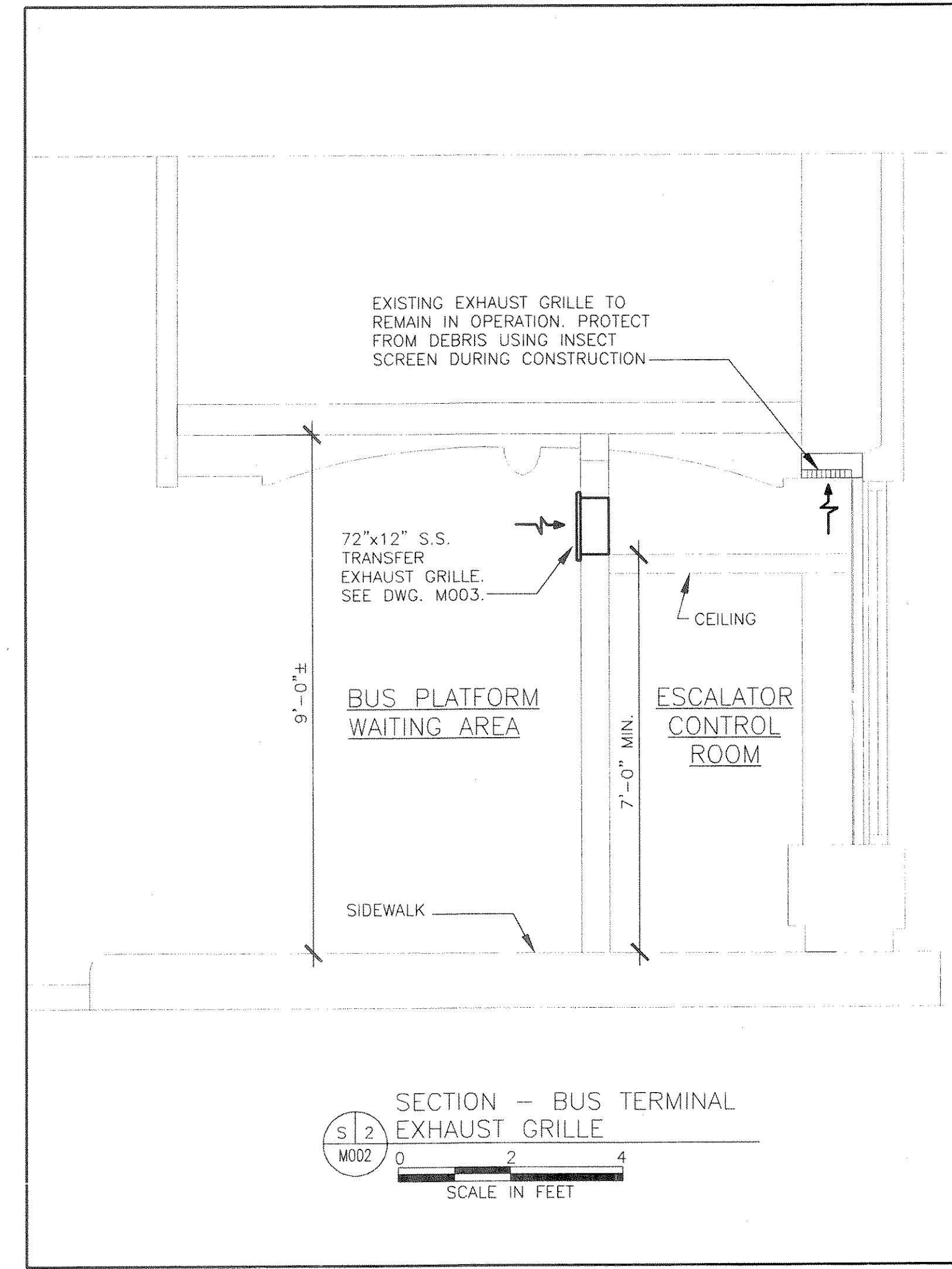
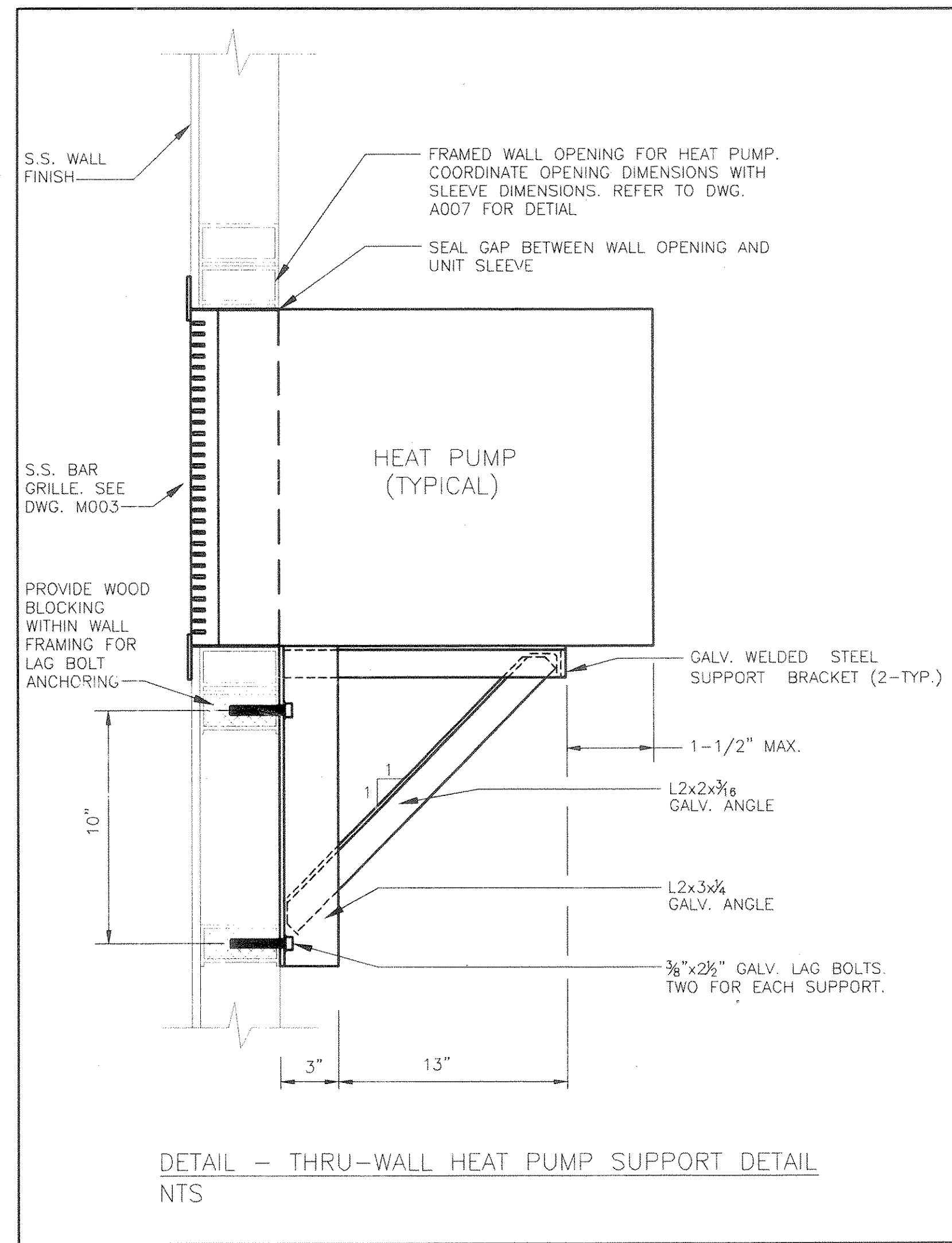
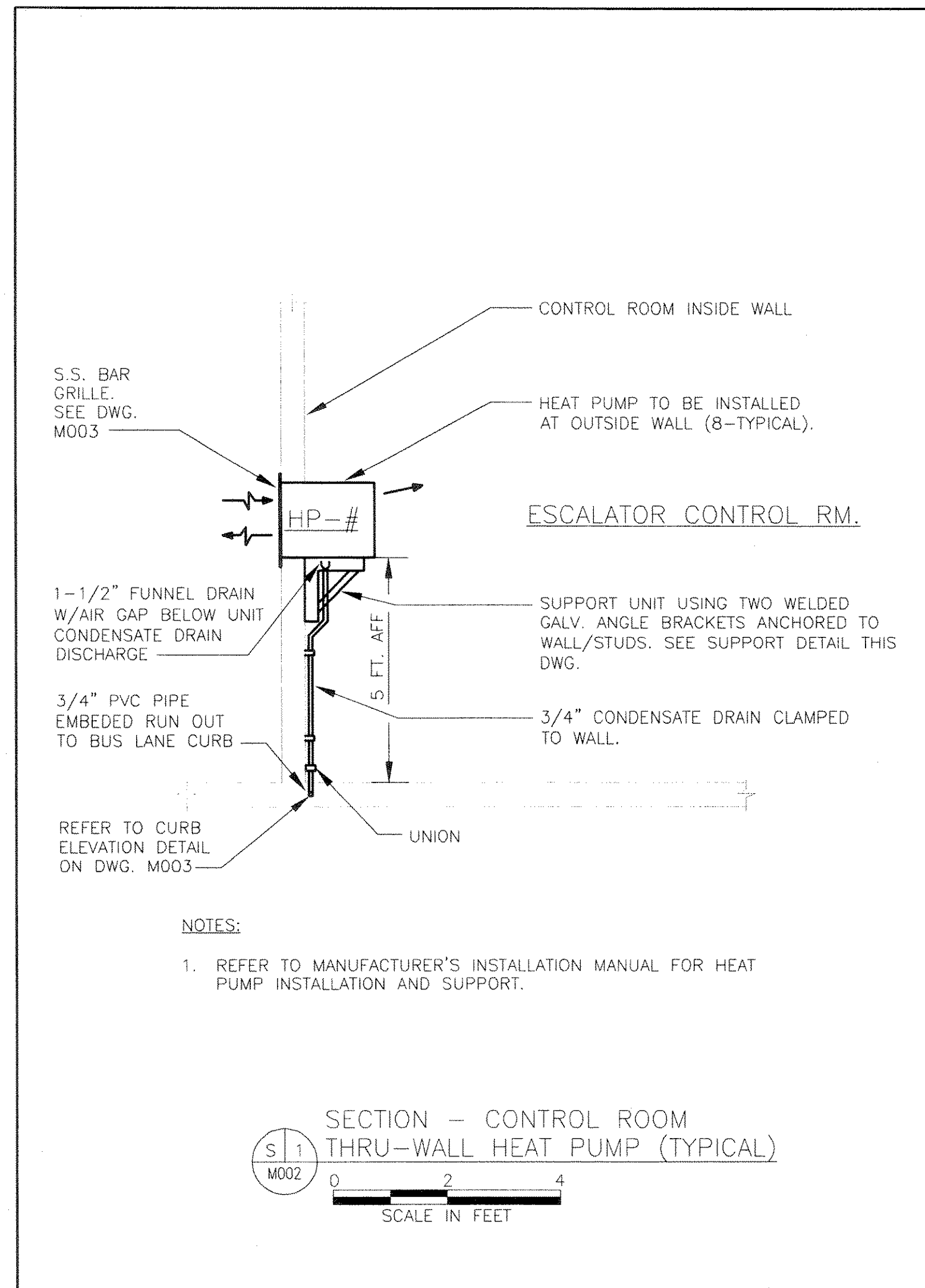
This drawing subject to conditions in contract. All inventions, ideas, designs and methods herein are reserved to Port Authority and may not be used without its written consent.  
All recipients of Contract documents, including bidders and those who do not bid and their prospective subcontractors and suppliers who may receive all or a part of the Contract documents or copies thereof, shall make every effort to ensure the secure and appropriate disposal of the Contract documents to prevent further disclosure of the information contained in the documents. Secure and appropriate disposal includes methods of document destruction such as shredding or arrangements with refuse handlers that ensure that third parties will not have access to the documents' contents either before, during, or after disposal. Documents may also be returned for disposal purposes to the Contract Desk on the 3rd Floor, 3 Gateway Center, Newark NJ 07102 or the office of the Director of Procurement, One Madison Avenue, 7th Floor, New York NY 10010.

S. ALI	S. ALI	R. CLASSI
Designed by	Drawn by	Checked by
Date	11/17/2008	
Contract Number	PAT-214.004	
Drawing Number	M004	
	PID# 07957000	

HEAT PUMP SCHEDULE

UNIT No.	LOCATION	QTY.	COOLING CAPACITY (BTU/HR)	HEATING CAPACITY (BTU/HR)	AIR FLOW (CFM)		EER	ELECTRICAL					DIMENSIONS WxDxH (IN)	CARRIER MODEL NO.	WEIGHT	REMARKS		
					HIGH	LOW		VOLTS	WATTS (COOLING)	WATTS (HEATING)	RECEPTACLE TYPE	AMPS (COOLING)					AMPS (HEATING)	FUSE SIZE
HP-1	CONTROL ROOM	1	8,000	4,200	280	190	9.4	115	850	1,250	15A, 125V	7.5	12	15	24x18½x14½	52FE108-1-E	88	NOTE 1
HP-2	CONTROL ROOM	1	8,000	4,200	280	190	9.4	115	850	1,250	15A, 125V	7.5	12	15	24x18½x14½	52FE108-1-E	88	NOTE 1
HP-3	CONTROL ROOM	1	8,000	4,200	280	190	9.4	115	850	1,250	15A, 125V	7.5	12	15	24x18½x14½	52FE108-1-E	88	NOTE 1
HP-4	CONTROL ROOM	1	8,000	4,200	280	190	9.4	115	850	1,250	15A, 125V	7.5	12	15	24x18½x14½	52FE108-1-E	88	NOTE 1
HP-5	CONTROL ROOM	1	8,000	4,200	280	190	9.4	115	850	1,250	15A, 125V	7.5	12	15	24x18½x14½	52FE108-1-E	88	NOTE 1
HP-6	CONTROL ROOM	1	8,000	4,200	280	190	9.4	115	850	1,250	15A, 125V	7.5	12	15	24x18½x14½	52FE108-1-E	88	NOTE 1
HP-7	CONTROL ROOM	1	8,000	4,200	280	190	9.4	115	850	1,250	15A, 125V	7.5	12	15	24x18½x14½	52FE108-1-E	88	NOTE 1
HP-8	CONTROL ROOM	1	8,000	4,200	280	190	9.4	115	850	1,250	15A, 125V	7.5	12	15	24x18½x14½	52FE108-1-E	88	NOTE 1

- NOTE:  
1. PROVIDE CARRIER 52F SERIES ELECTRIC HEAT/COOL UNITS OR APPROVED EQUAL.  
2. PROVIDE INTERNAL DRAIN FOR CONDENSATE.



GENERAL NOTES:

1. REFER TO DWG. M001 FOR SYMBOLS, LEGENDS, ABBREVIATIONS AND GENERAL NOTES.