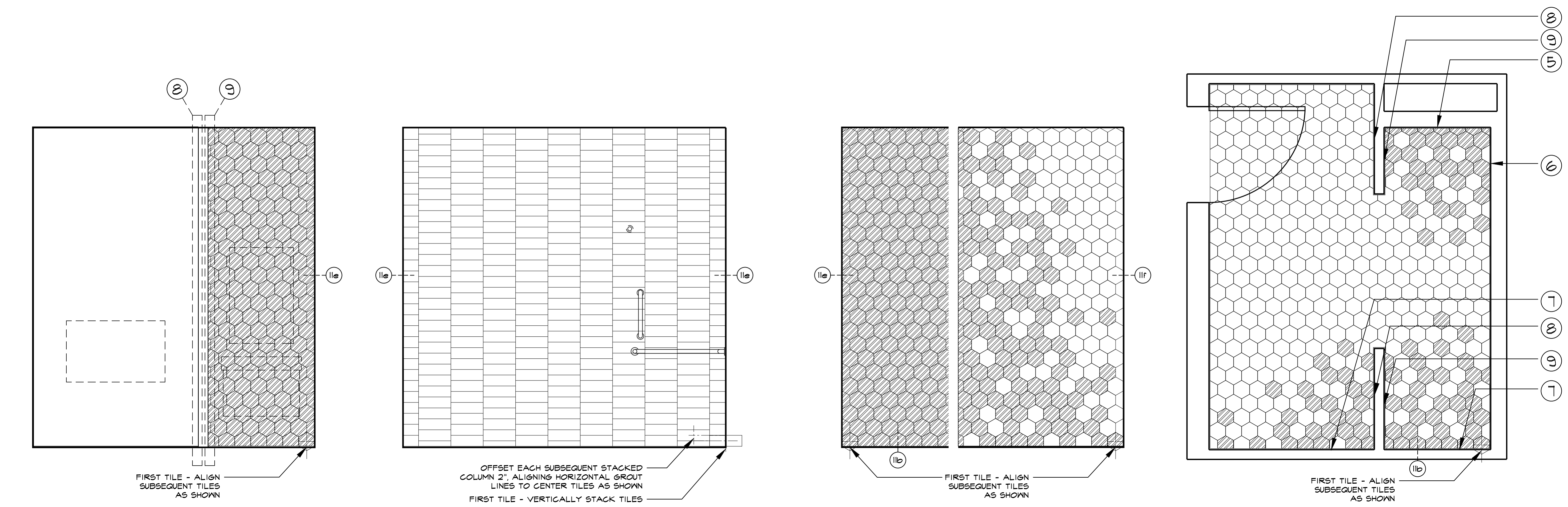


date	revision

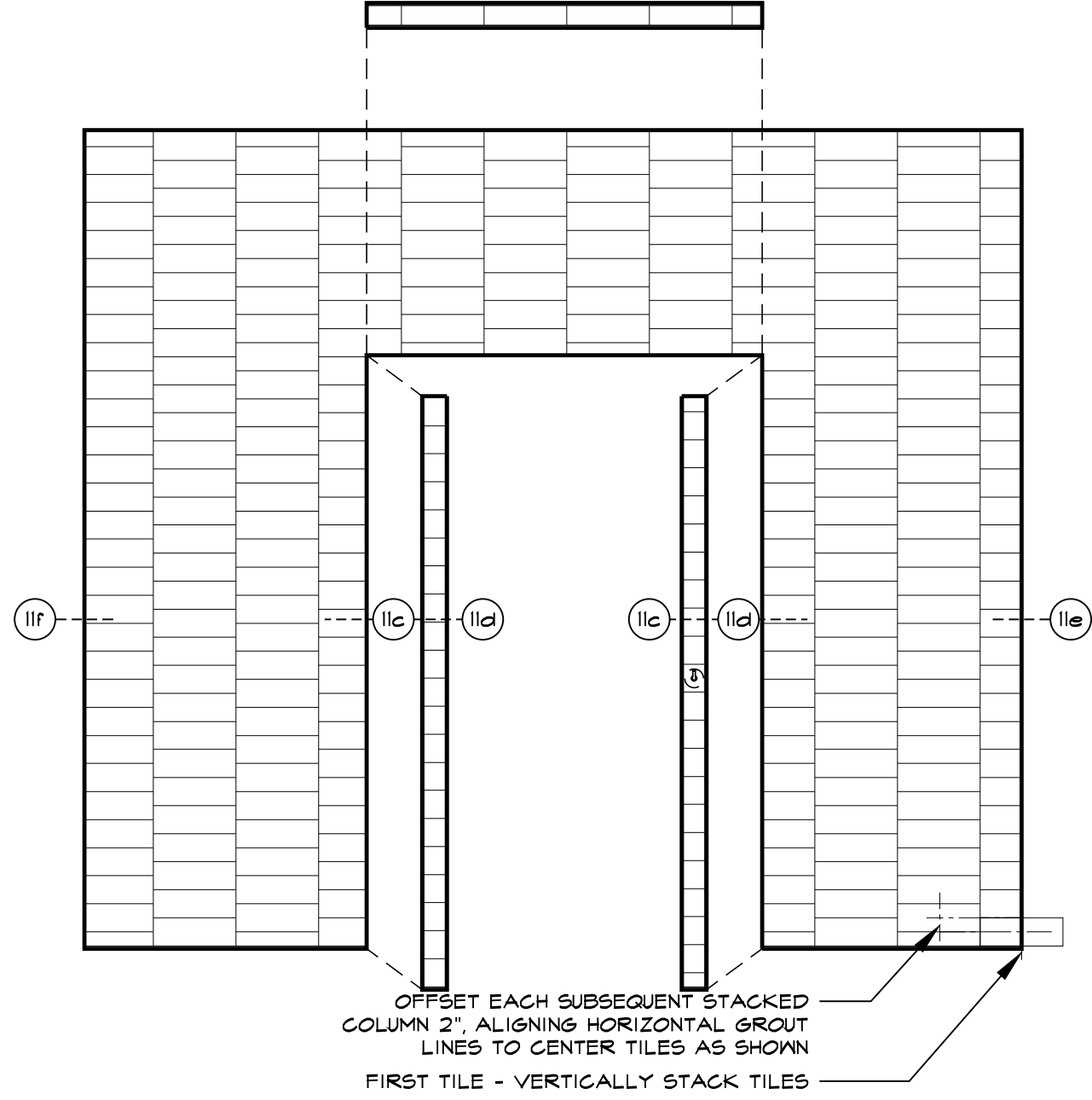


5 WALL A - TILING LAYOUT  
SCALE: 1/2" = 1'-0"

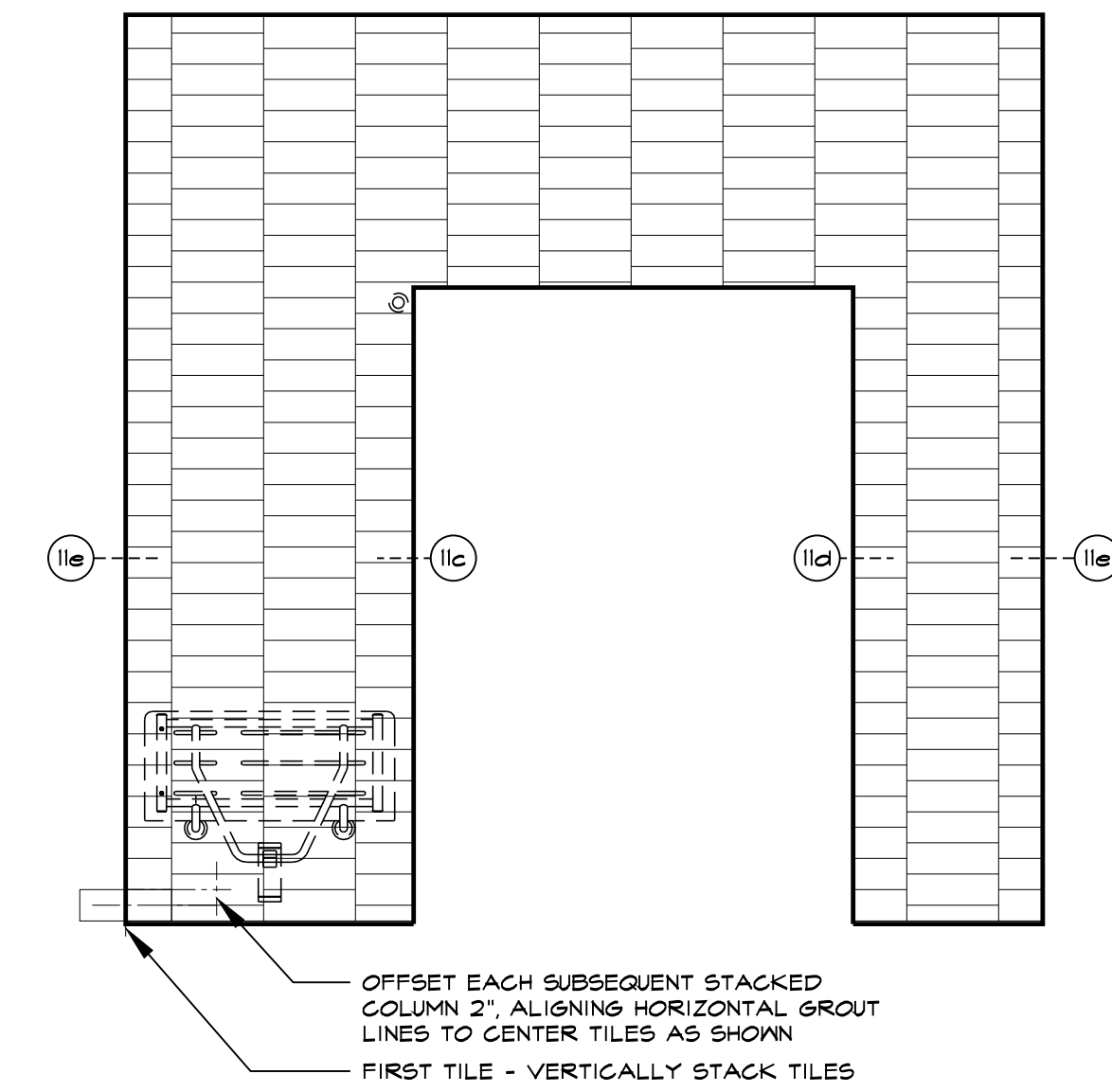
6 WALL B - TILING LAYOUT  
SCALE: 1/2" = 1'-0"

7 WALL D - TILING LAYOUT  
SCALE: 1/2" = 1'-0"

10 RESTROOM PLAN - TILING LAYOUT  
SCALE: 1/2" = 1'-0"

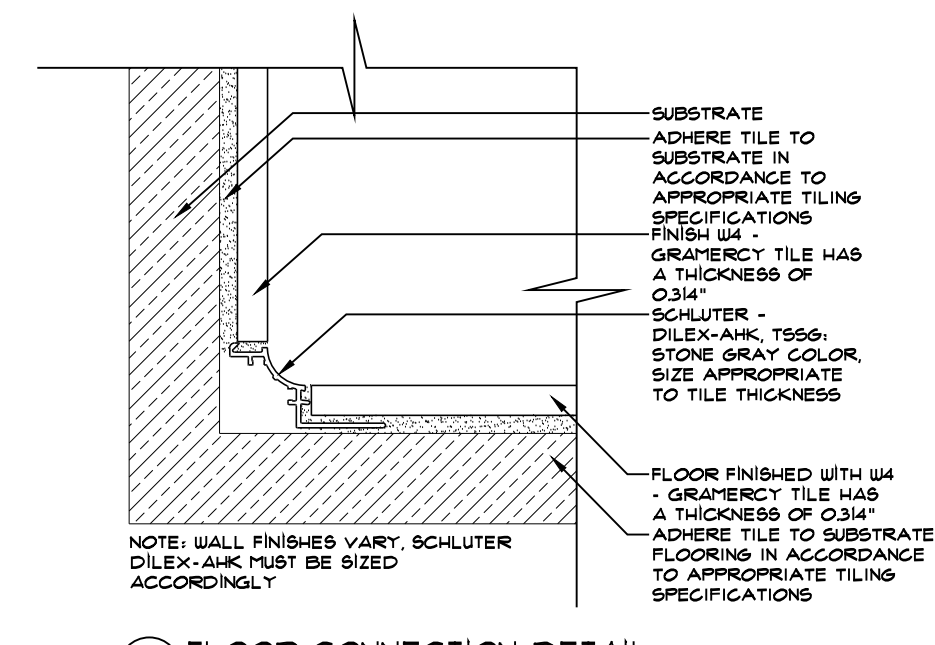


8 DIVIDER WALL - OUTER WALL TILING LAYOUT  
SCALE: 1/2" = 1'-0"

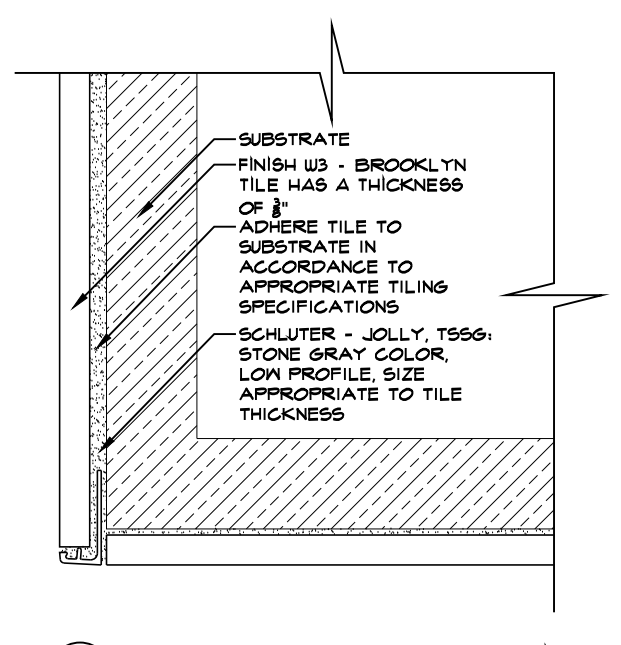


9 DIVIDER WALL - INNER WALL TILING LAYOUT  
SCALE: 1/2" = 1'-0"

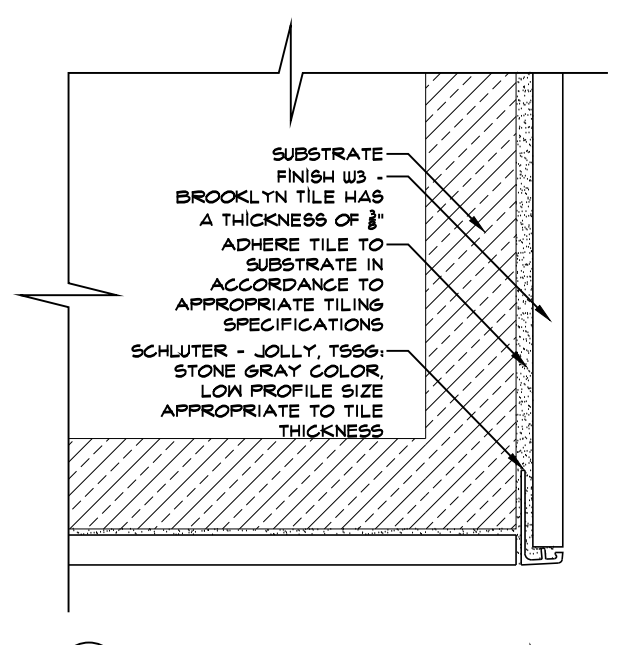
- FINISH U3 - NEMO TILE, BROOKLYN (PORCELAIN) COLLECTION, DUMBO (BLACK), FULL COVERAGE (4"x12"x3/8")
- FINISH U4 - NEMO TILE, GRAMERCY (PORCELAIN) COLLECTION - DECOR MIX BIANCO (5.9"x6.1"x0.314") HEXAGON, 11 VARIOUS GRAPHICS COME PREMIXED IN BOXES, FULL RANDOM TILE FROM BOX
- FINISH U5 - NEMO TILE, GRAMERCY (PORCELAIN) COLLECTION - BIANCO MATTE (WHITE) 5.9"x6.1" HEXAGON
- GROUT - BOSTIK HYDROMENT DRY TILE GROUT, H144 (MISTY GREY), SANDED, 1/8" BETWEEN TILES & AROUND PERIMETER TYP
- REMAINING RESTROOM WALLS FINISHED WITH U6 PAINT, B2 BASE AND SCHLUTER - DILEX-AHK, T556, STONE GRAY COLOR, SIZE APPROPRIATE TO TILE THICKNESS



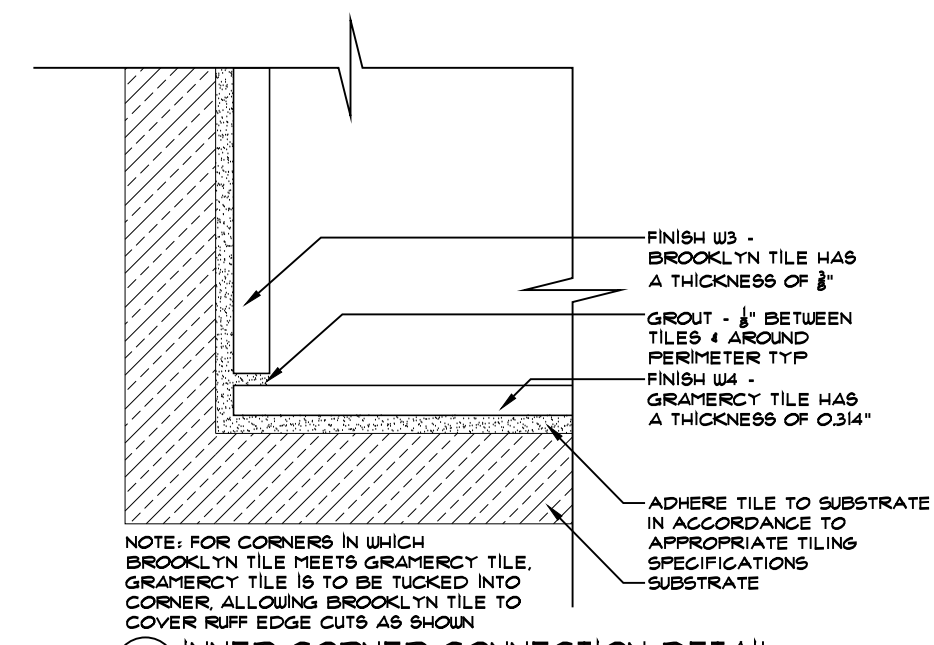
b FLOOR CONNECTION DETAIL  
TILE WALL TO TILE FLOOR



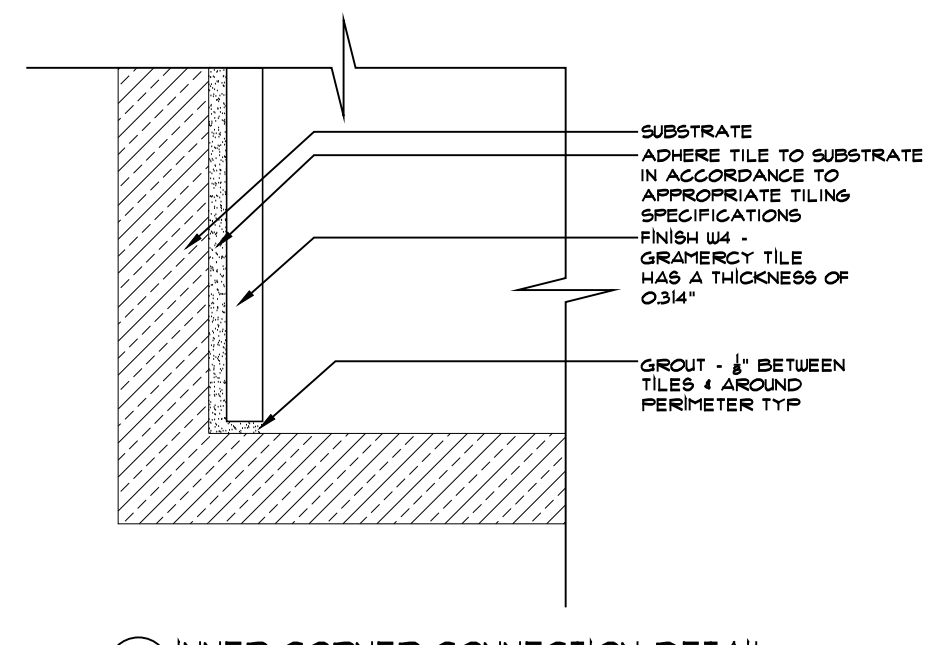
c OUTER CORNER CONNECTION DETAIL  
TILE WALL TO TILE WALL



d OUTER CORNER CONNECTION DETAIL  
TILE WALL TO TILE WALL



e INNER CORNER CONNECTION DETAIL  
TILE WALL TO TILE WALL



f INNER CORNER CONNECTION DETAIL  
TILE WALL TO PAINTED WALL

11 RESTROOM TILE DETAILS  
SCALE: 6" = 1'-0"