



**PORT AUTHORITY**  
TRANS-HUDSON CORPORATION

GANNETT FLEMING, P.C.  
ENGINEERS AND ARCHITECTS

*John D. Purdy*  
JOHN D. PURDY  
N.J. Professional Engineer # 24GE03967100

No.	Date	Revision	Approved

ENGINEERING DEPARTMENT

**JOURNAL  
SQUARE  
TRANSPORTATION  
CENTER**

MECHANICAL PLUMBING

Title

**BUS TERMINAL  
ESCALATOR REPLACEMENT**

**PLUMBING  
REMOVAL PART PLANS  
CONCOURSE LEVEL**

This drawing subject to conditions in contract. All inventions, ideas, designs and methods herein are reserved to Port Authority and may not be used without its written consent.

All recipients of Contract documents, including bidders and those who do not bid and their prospective subcontractors and suppliers who may receive all or a part of the Contract documents or copies thereof, shall make every effort to ensure the secure and appropriate disposal of the Contract documents to prevent further disclosure of the information contained in the documents. Secure and appropriate disposal includes methods of document destruction such as shredding or arrangements with refuse handlers that ensure that third persons will not have access to the documents' contents either before, during, or after disposal. Documents may also be returned for disposal purposes to the Contract Desk on the 3rd Floor, 3 Gateway Center, Newark, NJ 07102, or the office of the Director of Procurement, One Madison Avenue, 7th Floor, New York, NY 10010.

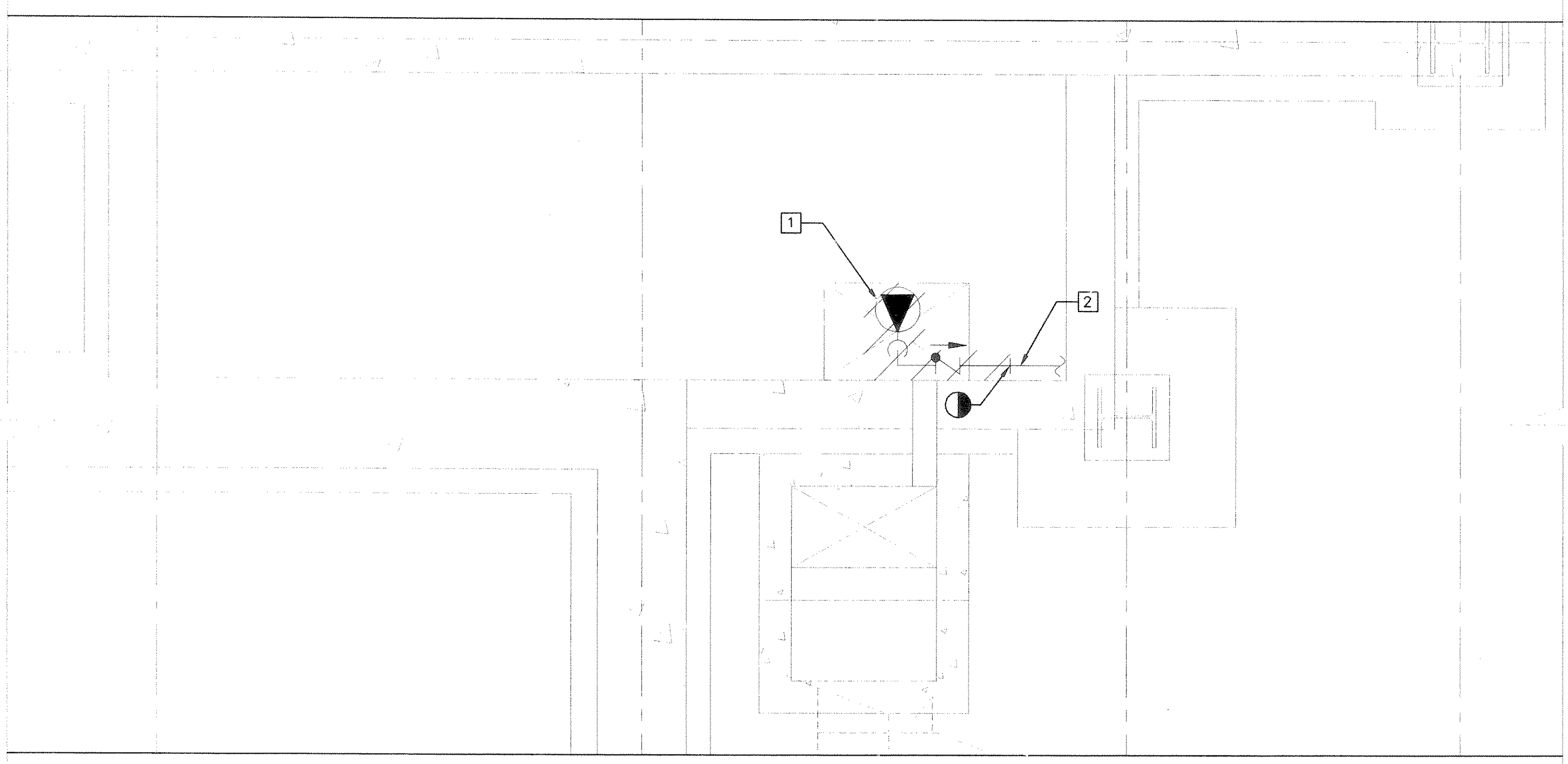
S. ALI	S. ALI	R. CLASSI
Designed by	Drawn by	Checked by
Date	11/17/2008	
Contract Number	PAT-214.004	
Drawing Number	<b>P003</b>	
	PID# 07957000	

**NOTES:**

- EXISTING ESCALATOR SUMP PUMP AND 1-1/2" PUMP DISCHARGE PIPE CONNECTION TO BE REMOVED. PROVIDE TEMPORARY PIPE CAP DURING CONSTRUCTION.
- EXISTING 1-1/2" SUMP PUMP DISCHARGE PIPING TO BE REUSED.

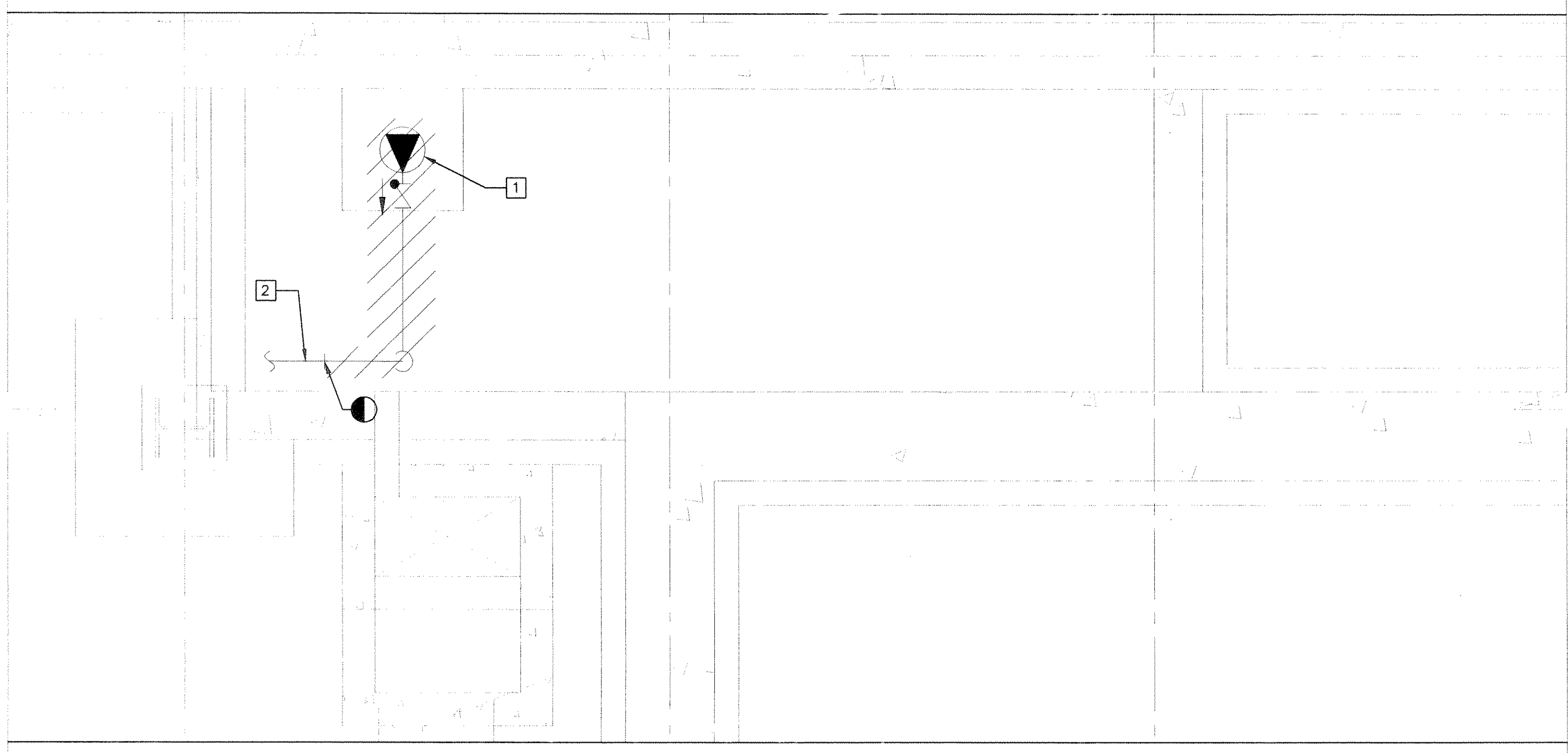
**GENERAL NOTES:**

- REFER TO DWG. P001 FOR SYMBOLS, LEGENDS, ABBREVIATIONS AND GENERAL NOTES.



**P 1**  
P002 ESCALATOR SUMP PUMP REMOVAL - TYPICAL FOR ESCALATORS 5, 7 & 10

SCALE IN FEET



**P 2**  
P002 ESCALATOR SUMP PUMP REMOVAL - TYPICAL FOR ESCALATORS 6, 8, & 9

SCALE IN FEET