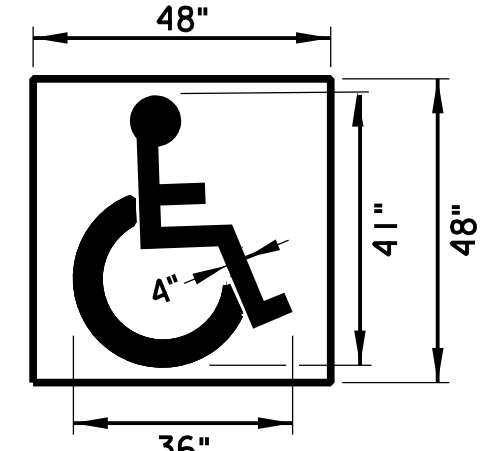


SIGN TABLE

NUMBER REQUIRED	LEGEND	SIZE		COPY		BACKGROUND		REMARKS
		WIDTH	HEIGHT	COLOR	FINISH	COLOR	FINISH	
6		12"	18"	GREEN	NON/ REFLECTIVE SHEETING	WHITE	NON/ REFLECTIVE SHEETING	MUTCD SIGN NUMBERS R7-8 R7-8P RINJ7-8A
4		12"	6"	WHITE	NON/ REFLECTIVE SHEETING	BLUE	NON/ REFLECTIVE SHEETING	
6		10"	12"	BLACK	NON/ REFLECTIVE SHEETING	WHITE	NON/ REFLECTIVE SHEETING	

NOTE: SIGN FABRICATION AND PLACEMENT SHALL BE IN ACCORDANCE WITH THE LATEST MUTCD STANDARDS.

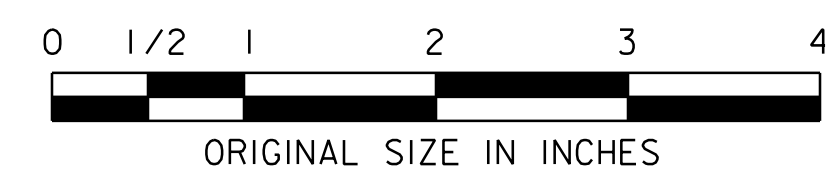


INTERNATIONAL SYMBOL OF ACCESSIBILITY PARKING SPACE MARKING WITH BLUE BACKGROUND AND WHITE SYMBOL
N.T.S.



BREAK-A-WAY STEEL U-POST

R7-8, R7-8P RINJ 7-8A
SIGN MOUNTING DETAIL
N.T.S.

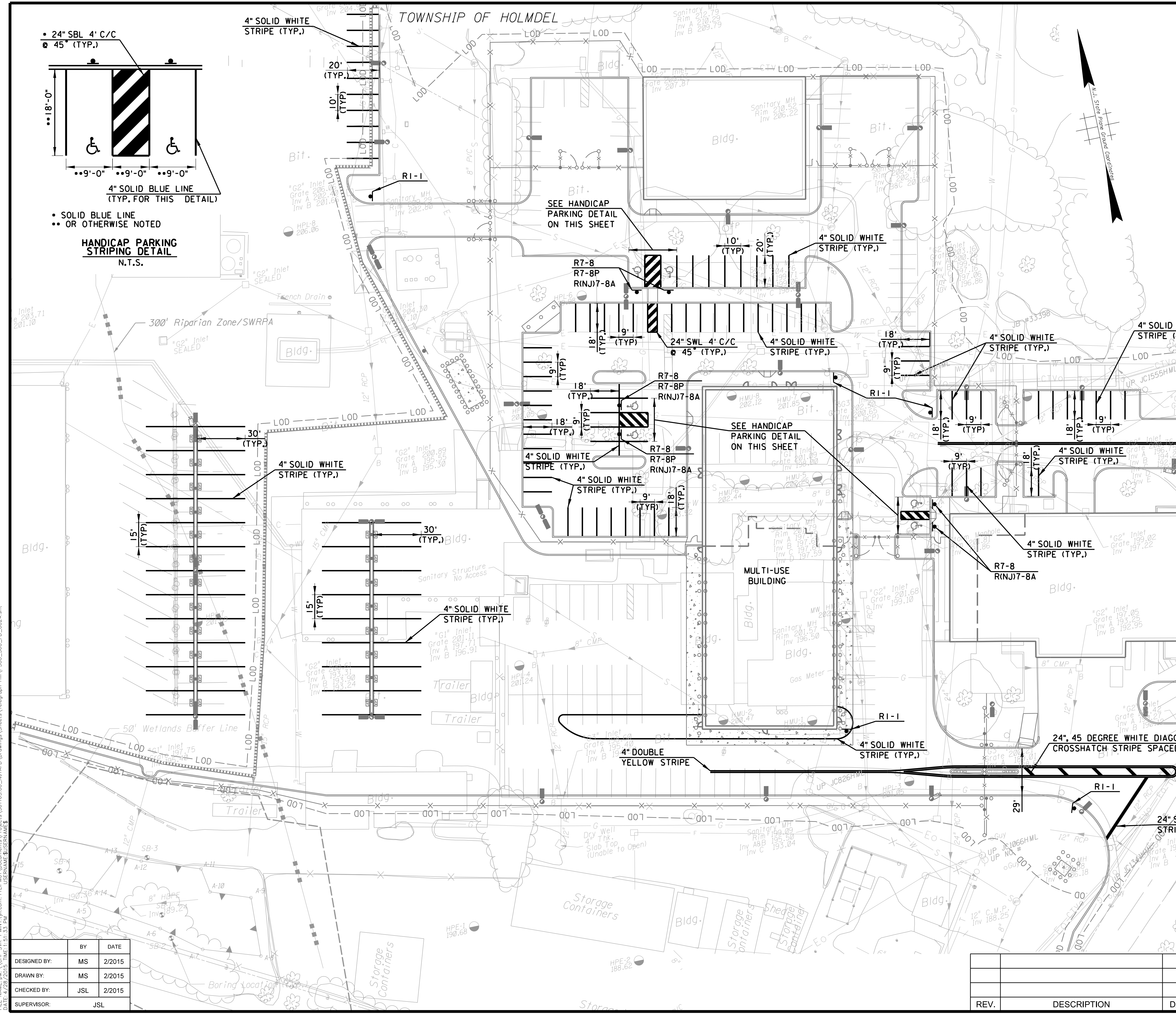


NEW JERSEY TURNPIKE AUTHORITY
GARDEN STATE PARKWAY
CONTRACT NO. P500.360 - FACILITIES IMPROVEMENT PROGRAM
PMD5 (TELEGRAPH HILL) MP 116, PMD6 (CLARK) MP 136.7,
PMD7 (CLIFTON) MP 156.1 AND PMD8 (PARAMUS) MP 164.2
PMD5 (TELEGRAPH HILL)
SIGNING AND STRIPING PLAN

T.Y. LIN INTERNATIONAL
3379 QUAKERBRIDGE ROAD, SUITE 200
HAMILTON, NJ 08619
CERTIFICATE OF AUTHORIZATION NO. 24GA27976000
SCALE: 1"=30'
DATE: MAY 2015
JAMES S. LESTER
NEW JERSEY PROFESSIONAL ENGINEER LICENSE NO. 24GE0346000

SS-1

24
679



DESIGNED BY:	MS	2/2015
DRAWN BY:	MS	2/2015
CHECKED BY:	JSL	2/2015
SUPERVISOR:	JSL	

REV.	DESCRIPTION	DATE	BY	CHK.