

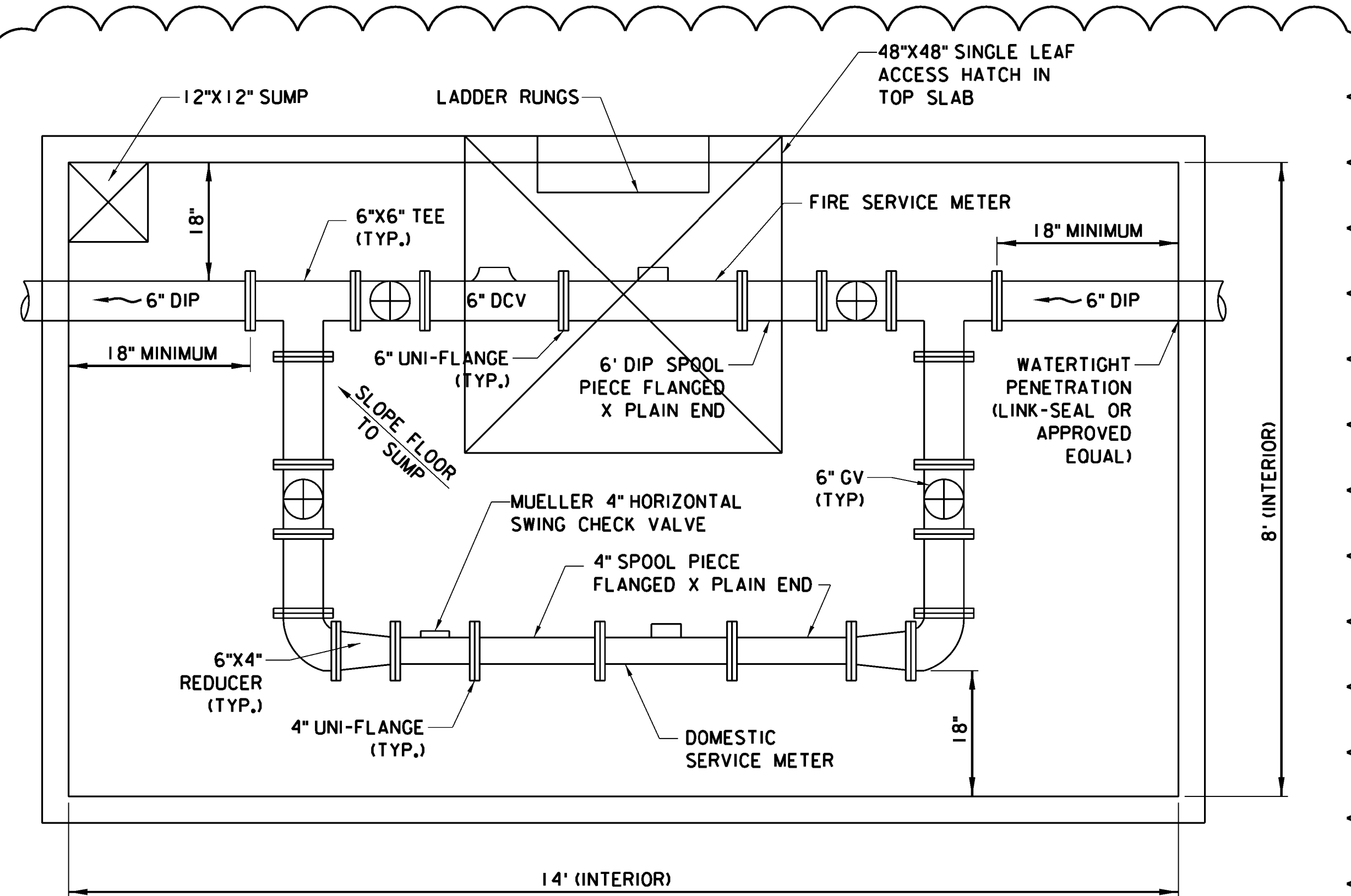
NOTES:

- 1. NEW SAFETY RATED EFSO PUSH BUTTON EQUIPPED WITH NEMA 3R, 7CD, 9EFG, 12 EXPLOSION-PROOF, RAIN-TIGHT AND WET LOCATIONS LISTED CAST ALUMINUM ALLOY FACTORY SEALED AND SUITABLE FOR INSTALLATION IN CL. I, DIV. 2 CLASSIFIED HAZARDOUS ENVIRONMENTS, CROUSE-HINDS EDS281 SERIES BODY WITH DSP1 SERIES COVER OR APPROVED EQUAL.
- SAFETY RATED PUSH BUTTON SHALL BE NEMA 3, 7BCD, 9EFG, EXPLOSION-PROOF, RAIN-TIGHT/OILTIGHT, AND WET LOCATIONS LISTED, NON-ILLUMINATED, MAINTAINED CONTACT (TWIST AND PULL TO RESET), 1 3/8" DIA. RED MUSHROOM HEAD PUSHBUTTON OPERATOR, CROUSE-HINDS EMP/EMPS SERIES OR APPROVED EQUAL. PROVIDE PUSHBUTTON WITH REQUIRED TYPE AND NUMBER OF CONTACTS. COORDINATE WITH EFSO SCHEMATIC WIRING DIAGRAMS.
- 2. NEW 1/4" THK ALUMINUM SIGN, RED BACKGROUND WITH 2" HIGH MINIMUM SIZE WHITE LETTERS. NEW PLACARD SHALL BE FABRICATED IN ACCORDANCE WITH NFPA 407 ARTICLE 2-4.5.7.
- 3. NEW EFSO STATION RACK TO BE GALVANIZED UNISTRUT, PAINTED WITH ANTI-CORROSION PAINT FOR OUTDOOR USE. APPLY BITUMINOUS COATING TO EMBEDDED PORTION OF GALVANIZED STEEL CHANNEL PRIOR TO PLACEMENT.

EFSO STATION DETAIL

N.T.S.

	BY	DATE
DESIGNED BY:	MS	2/2015
DRAWN BY:	MS	2/2015
CHECKED BY:	JSL	2/2015
SUPERVISOR:	JSL	

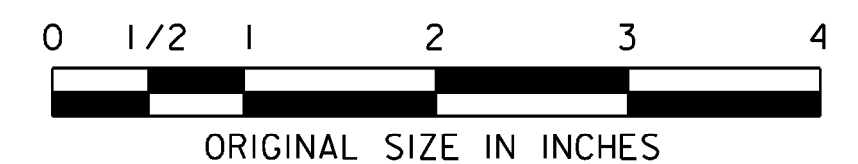


NOTES:

- 1. METERS AND DETECTOR CHECK VALVE (DCV) TO BE SUPPLIED BY SHORELANDS WATER COMPANY. ALL OTHER ITEMS SHALL BE PROVIDED BY CONTRACTOR.
- 2. CONTRACTOR SHALL PROVIDE SUPPORTS FOR METERS AND TEES. REMAINING PIPING SHALL BE SUPPORTED AS NEEDED.
- 3. ALL GATE VALVES SHALL BE LEFT OPEN, NON-RISING STEM BY MUELLER OR APPROVED EQUAL.
- 4. INTERIOR HEIGHT OF METER PIT SHALL BE A MINIMUM OF 6 FT. TOP OF METER PIT A MAXIMUM OF 2" ABOVE FINISHED GRADE.
- 5. INTERIOR SURFACES SHALL BE EPOXY COATED WHITE. EXTERIOR SURFACES SHALL BE COATED WITH BITUMASTIC WATERPROOFING.
- 6. ACCESS HATCH SHALL BE H-20 RATED AND WATERTIGHT DOOR WITH DRAIN.
- 7. METER PIT SHALL BE SET ON A MINIMUM OF 12" OF 3/4" STONE BEDDING.
- 8. NEW WATER MAIN SHALL HAVE A MINIMUM COVER OF 48".
- 9. CONTRACTOR TO PROVIDE METER PIT SUBMITTAL FOR REVIEW AND APPROVAL PRIOR TO INSTALLATION. SUBMITTAL SHALL INCLUDE FULLY DIMENSIONED DRAWINGS AND DESIGN STANDARDS (FOR PRECAST) OR DESIGN CALCULATIONS (FOR CAST IN PLACE).

WATER METER PIT LAYOUT

N.T.S.



CD-7
CD-8

NEW JERSEY TURNPIKE AUTHORITY
GARDEN STATE PARKWAY
 CONTRACT NO. P500.360 - FACILITIES IMPROVEMENT PROGRAM
 PMD5 (TELEGRAPH HILL) MP 116, PMD6 (CLARK) MP 136.7,
 PMD7 (CLIFTON) MP 156.1 AND PMD8 (PARAMUS) MP 164.2
 PMD5 (TELEGRAPH HILL)
 CONSTRUCTION DETAILS - 7

T.Y. LIN INTERNATIONAL
 3379 QUAKERBRIDGE ROAD, SUITE 200
 HAMILTON, NJ 08619
 CERTIFICATE OF AUTHORIZATION NO. 24GA27976000
 SANDEEP R. SINGH
 NEW JERSEY PROFESSIONAL ENGINEER LICENSE NO. 24GE04713200

SCALE: AS SHOWN
 DATE: MAY 2015

31
679

REV.	DESCRIPTION	DATE	BY	CHK.
1	COP NO. 4	5/31/17	NR	JSL