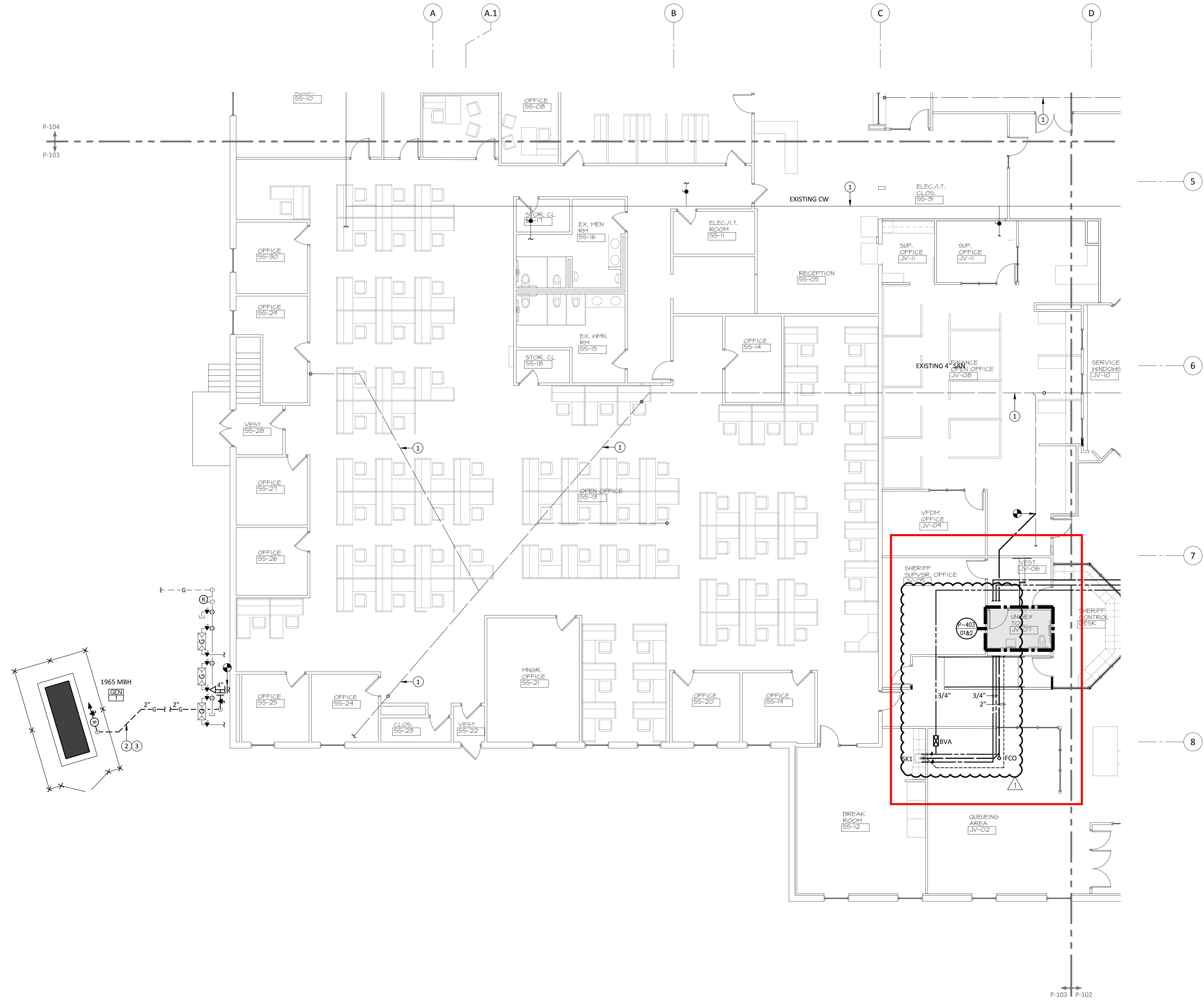


This Drawing Is The Property Of DLB Associates Consulting Engineers, P.C. It Was Prepared Exclusively For This Particular Project And Is Limited To This Project Only. Unauthorized Reproduction Or Other Use Of These Drawings Or Plans Is Prohibited.



**KEY NOTES (SYMBOLS ①, ②, ETC.)**

1. Approximate Location Of Existing Plumbing Infrastructure To Remain.
2. Pipe Length Beneath Parking Lot: ± 65'-0". See E-002 For Generator Location Plan.
3. Gas Piping Routed Below Parking Lot Asphalt To Generator Location. Piping To Be Fully Welded Schedule 40 Steel With Factory Applied Corrosion Resistant Coating And Cathodic Protection With Sacrificial Anode.

**BELOW GRADE SANITARY PIPING INVESTIGATION SCOPE**

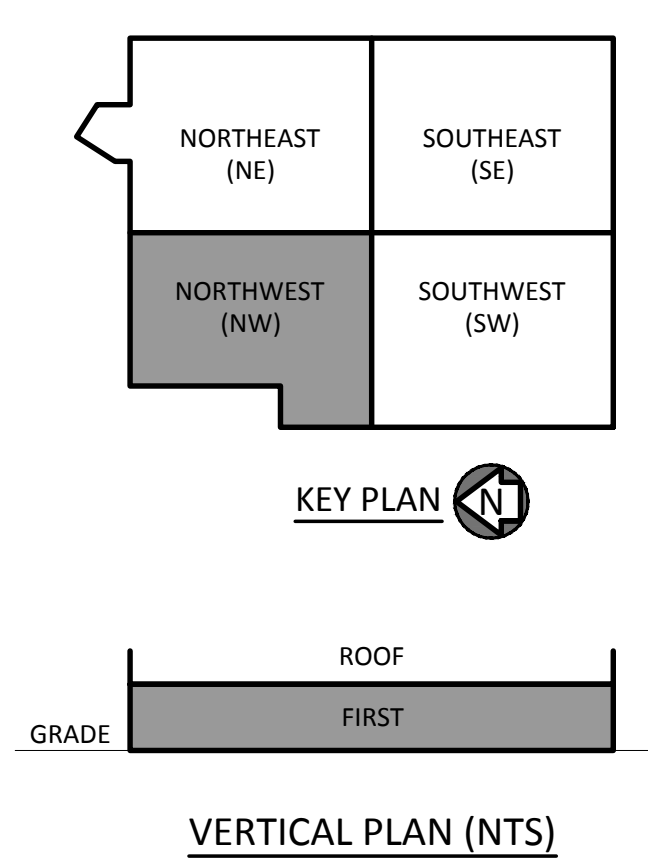
1. Due To The Lack Of Available Documentation, Existing Sanitary Piping Below Grade Has Been Shown In Approximate Locations Only. Contractor To Confirm Actual Locations In Field Prior To Tie-In Using Selective Demolition, Ground Penetrating Radar, Pipe Camera Or Some Combination Of Technologies To Confirm Locations.
2. All Final Locations Of Below Grade Plumbing Infrastructure To Be Documented On As-Built Drawings. See Specification For Additional Information.

**GENERAL NOTES**

1. It Is The Responsibility Of The Plumbing Contractor To Verify All Equipment Rough-Ins With The Appropriate Supplier And To Determine The Most Feasible And Economical Location To Install Piping And Valve Services.
2. Pipes Passing Under Or Through Any Walls, Including Foundation Walls Shall Be Installed Through Pipe Sleeves One Size Larger Than Pipe. Seal Around Pipe.
3. All Pipe Penetrations Of Fire And/Or Smoke Rated Assemblies Shall Be Fire Stopped As Required To Restore Assembly To Original Integrity.
4. Refer To Architectural Drawings For Exact Locations And Elevations Of All Plumbing Fixtures, Drains And Equipment. Provide Water Hammer Arrestors With Access Doors Adjacent To All Water Hammer Arrestors. Provide Shut-Off Valves At Each Fixture On Water Supply Pipes Hot And Cold.
5. Install Work So As To Be Readily Accessible For Operation, Maintenance, And Repair. Minor Deviations From The Drawings May Be Made To Accomplish This Without Additional Cost To The Owner. Changes With Cost Impact Shall Not Be Made Without Approval.
6. Provide All Necessary Piping Offsets And Changes In Direction Required To Complete The Installation.

**PARTIAL SYMBOLS & ABBREVIATIONS**

Identifier	Description	Identifier	Description
CO	Connect To Existing	CO	Cleanout
DISC	Disconnect From Existing	CW	Cold Water
EQ	Existing Equipment	DFU	Drainage Fixture Units
DEM	Demo Equipment	FCO	Floor Cleanout
NEW	New Equipment	FD	Floor Drain
EQ#	Equipment Type	GCO	Grade Cleanout
EQ#	Equipment Number	HB	Hose Bibb
EXIST	Existing Piping To Remain	HW	Hot Water
REMO	Existing Piping To Be Removed	HWR	Hot Water Return
SAN	Sanitary Piping Above Floor	LAV	Lavatory
SAN	Sanitary Piping Below Floor	RD	Roof Drain
VENT	Vent Piping	SA	Shock Arrestor
CWP	Cold Water Piping	TP	Trap Primer
HW	Hot Water Piping	V	Vent
HW	Hot Water Return Piping	VTR	Vent Through Roof
GV	Gate Valve	WC	Water Closet
BV	Ball Valve	WCO	Wall Clean Out
UPL	Pipe Up Through Floor Above Or Through Section Cut Line	WSFU	Water Supply Fixture Units
OD	Pipe Drop / Offset Down	WH	Wall Hydrant
SC	Sanitary Clean Out		
FCO	Floor Clean Out		
GCO	Grade Clean Out		
WCO	Wall Cleanout		
VSR	Vent Stack Riser Designation		
FD	Floor Drain (See Schedules)		
CV	Check Valve		
BP	Backflow Preventer		
WA	Water Meter Assembly		
WH	Wall Hydrant / Hose Bib		



FIRST FLOOR PART PLAN Scale: 1/8"=1'-0" Drawing: P-103 Detail: 01



**SETTEMBRINO ARCHITECTS**

25 Bridge Avenue | Suite 201  
Red Bank, NJ 07701  
732.741.4900 (o) | 732.741.4977 (f)

Kevin M Settembrino, AIA, LEED AP  
License No. AI 15163

OWNER  
County of Monmouth - Division of Engineering & Traffic Safety  
Hall of Records, Annex  
Freehold, NJ  
732.431.7760 (O) | 732.431.7765 (F)

CIVIL ENGINEERS  
Dynamic Engineering Consultants, PC  
1904 Main Street  
Lake Como NJ, 07719  
732-974-0198 (O) | 732-974-3521 (F)

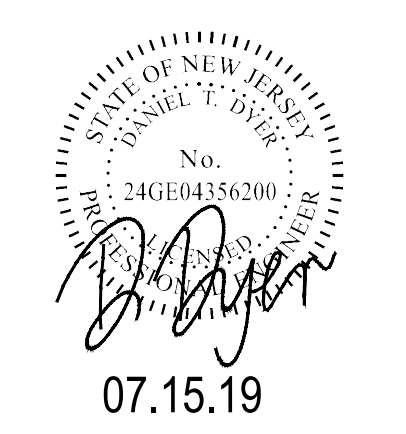
Daniel J Dougherty, PE/PP  
Lic. No. 41690

STRUCTURAL ENGINEERS  
MPP Engineers, LLC  
79 Mill Pond Road  
Jackson, NJ 08527  
609-489-5511 (O) | 609-489-5916 (F)

Scott W. McConnell, PE  
Lic. No. 40281

MECH/ ELECT / PLUMBING ENGINEERS  
DLB Associates Consulting Engineers  
285 Industrial Way West  
Eatontown, NJ 07724  
732-927-5127 (O) | 732-774-5000 (F)

Dan Dyer, PE  
Lic. No. 24GE04356200

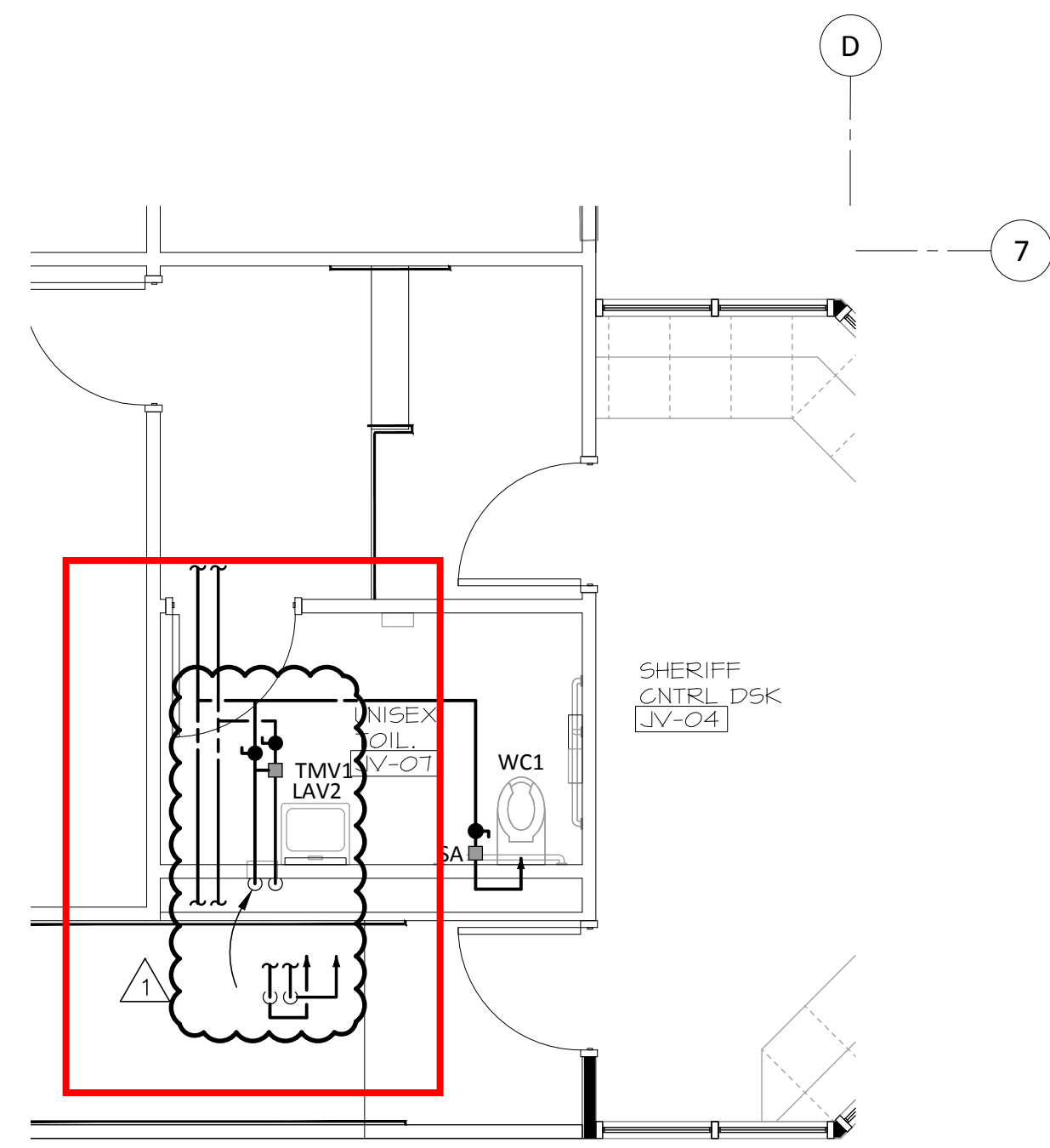


No.	Description	Date
3	85% CD SUBMISSION	10.31.18
4	90% CD SUBMISSION	11.15.18
5	100% CD SUBMISSION	12.26.18
6	Final County Review	04.26.19
7	Addendum #3	07.15.19
8	Bulletin #1	09.16.19

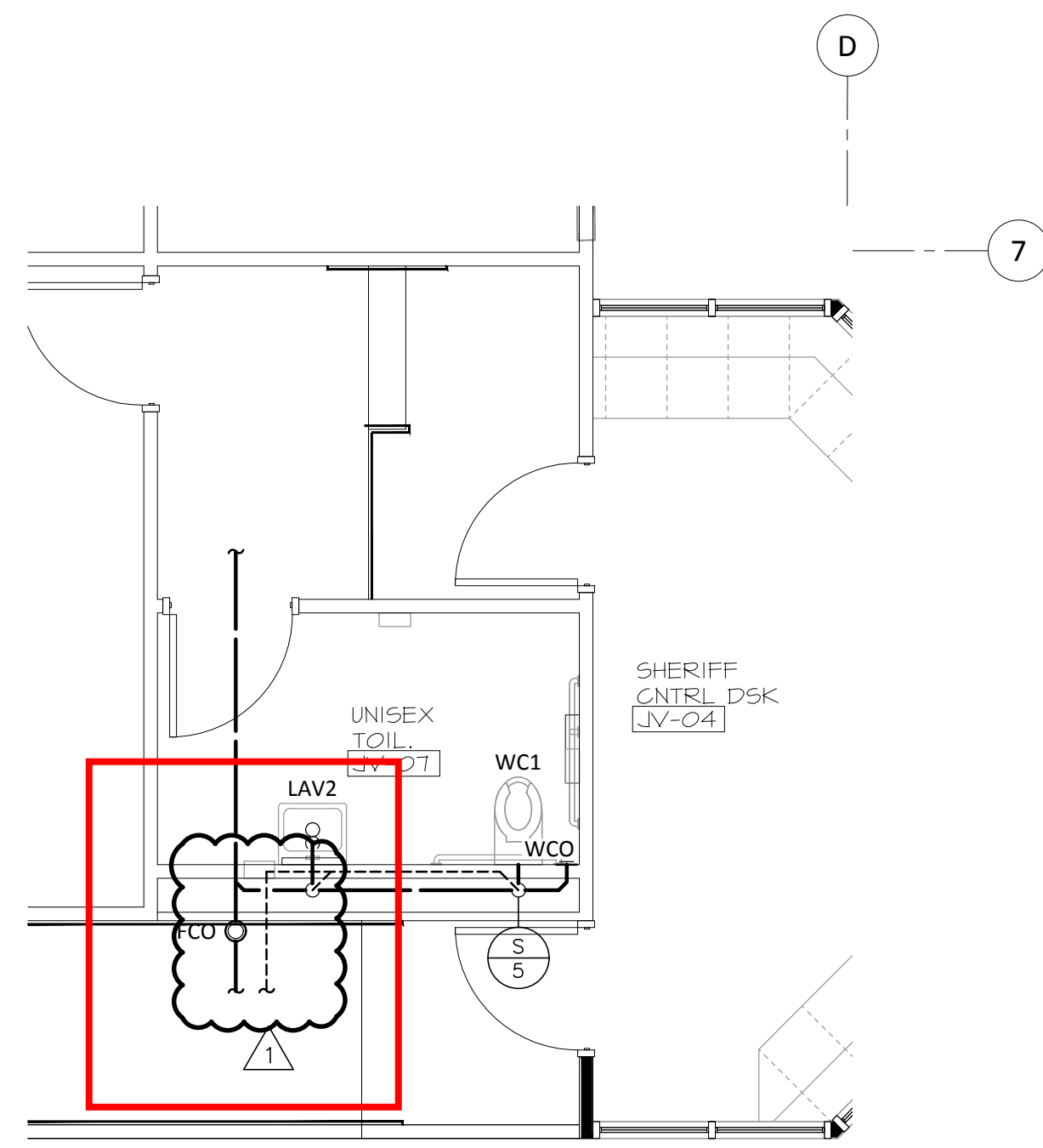
JOB NO. 16.013  
DRAWN BY: CHECKED BY:  
DATE: Bid Documents 01/10/2019  
CAD FILE:

INTERIOR RENOVATIONS & ALTERATIONS TO THE MONMOUTH COUNTY SEAVIEW BUILDING  
2407 ROUTE 66  
OCEAN, NJ,  
1ST FLOOR PLAN - NW  
PLUMBING PLAN

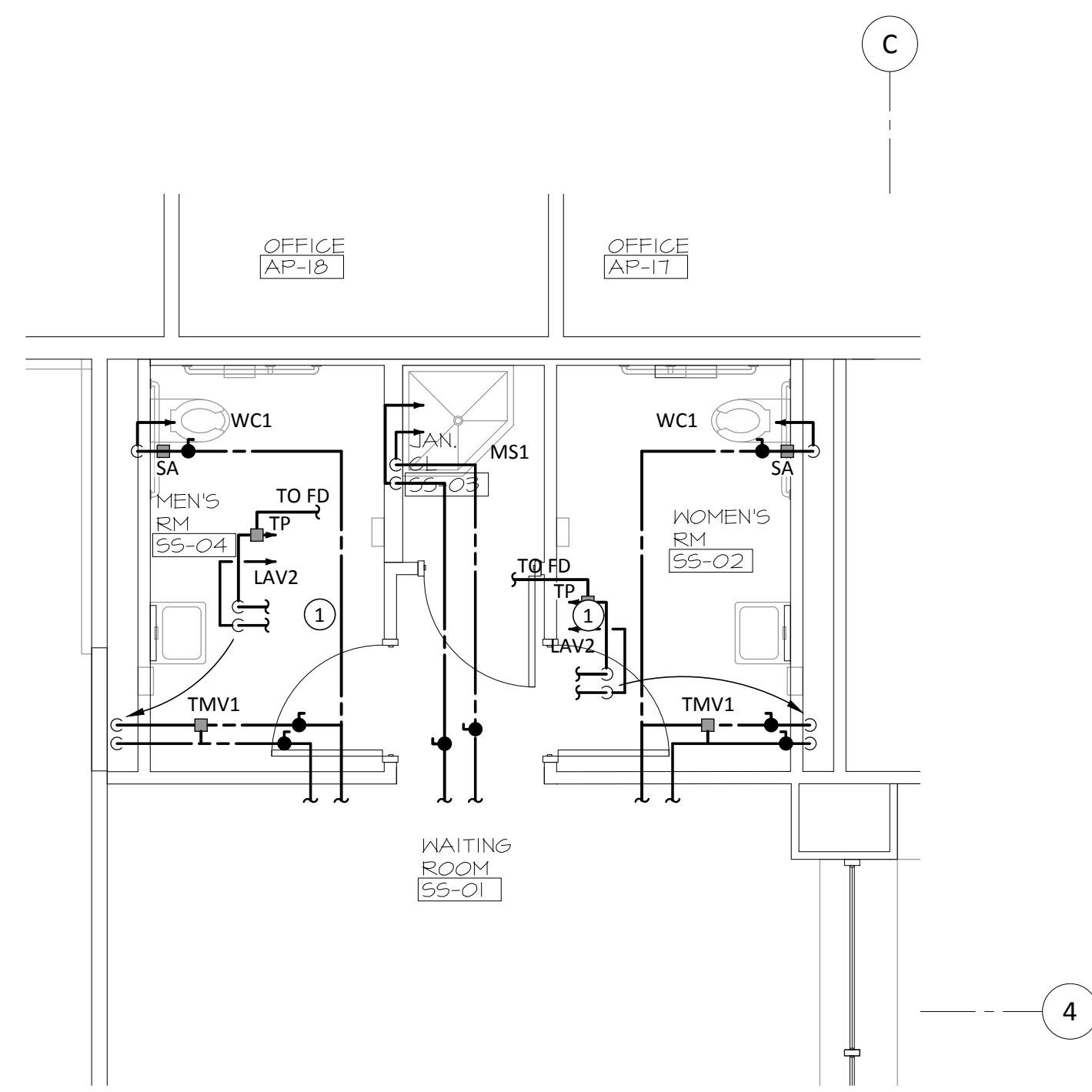
**P-103**



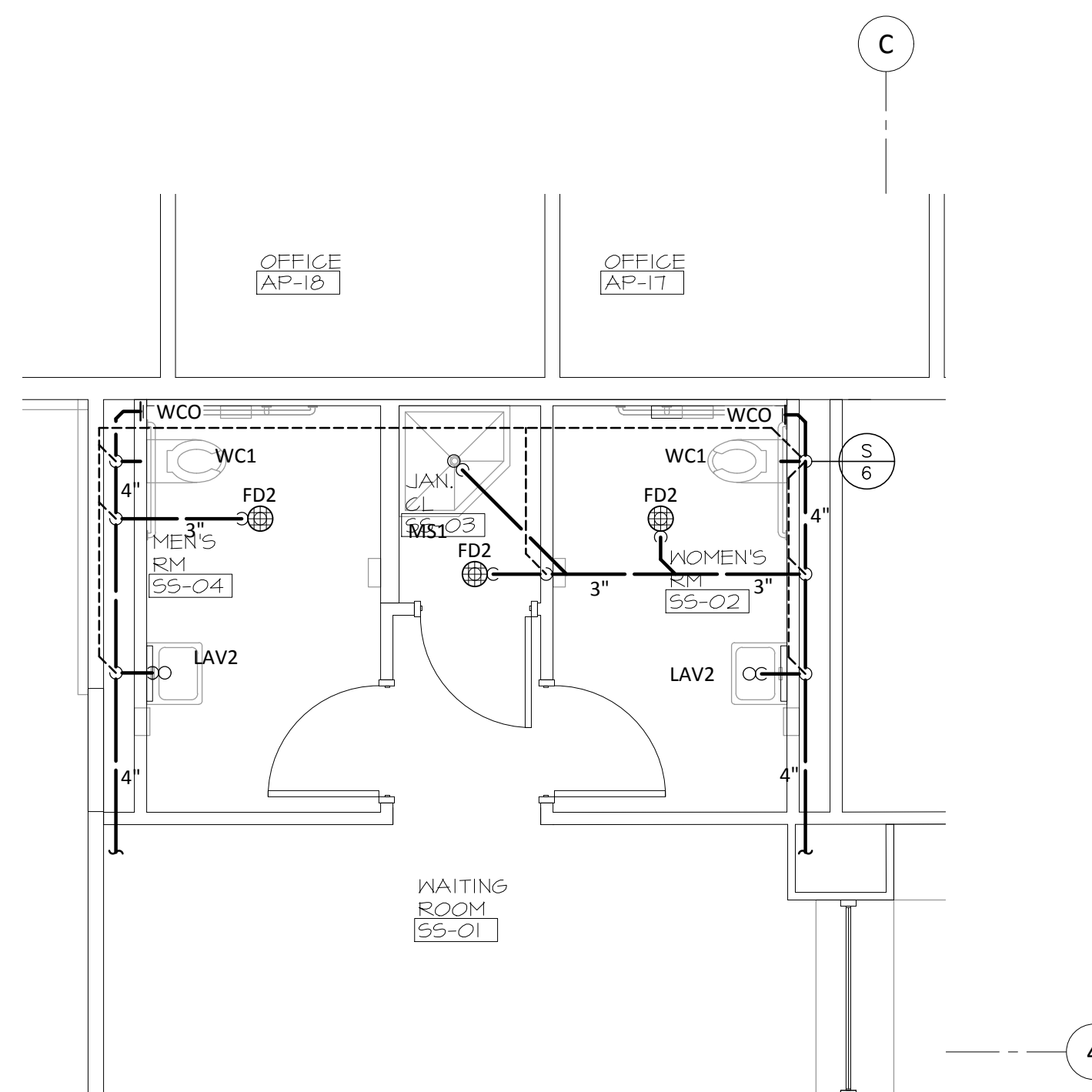
PLUMBING SUPPLY PART PLAN Scale: 1/4"=1'-0" Drawing: P-403 Detail: 01



DRAINAGE PART PLAN Scale: 1/4"=1'-0" Drawing: P-403 Detail: 02



PLUMBING SUPPLY PART PLAN Scale: 1/4"=1'-0" Drawing: P-403 Detail: 03



DRAINAGE PART PLAN Scale: 1/4"=1'-0" Drawing: P-403 Detail: 04

KEY NOTES (SYMBOLS ①, ②, ETC.)

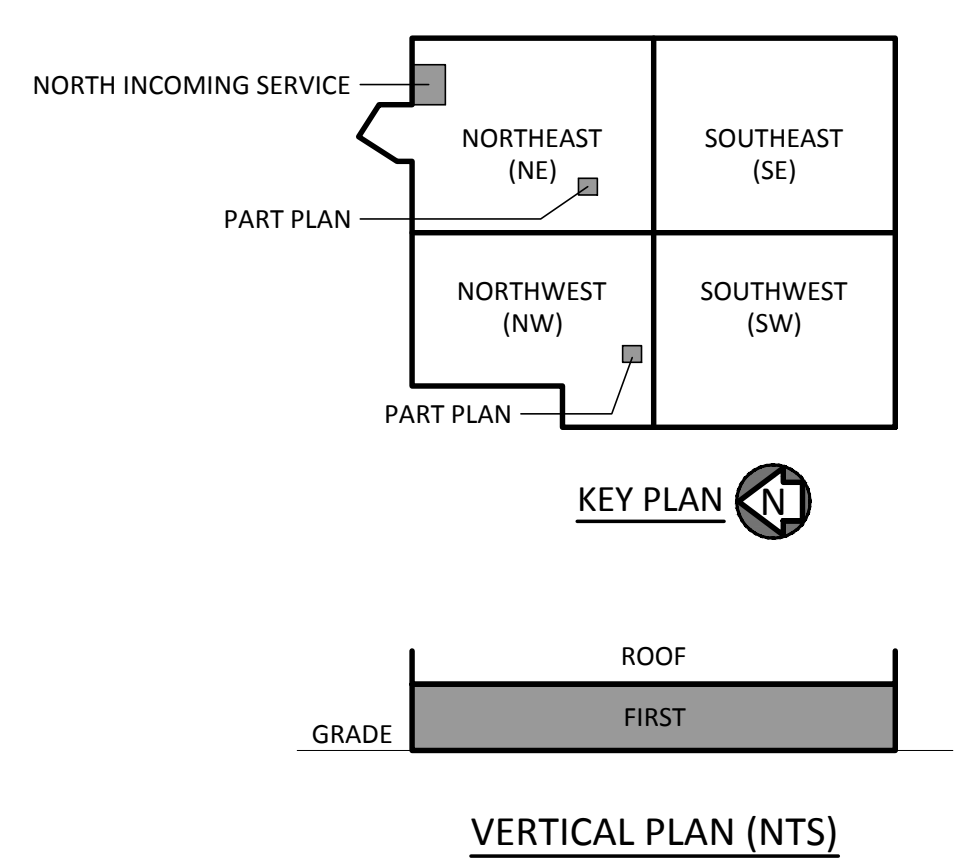
1. Provide Flow Type Trap Primer At All Lavatory Cold Water Lines To Serve The Restroom Floor Drains.

GENERAL NOTES

1. Inverts And Exact Locations Of All Existing Utilities Shall Be Checked Before Proceeding With The Installation.
2. All Plumbing Work Shall Be Coordinated With All Other Trades Before Proceeding With The Installation. No Changes Are To Be Made In Plumbing Layout Without Written Permission By The Architect Or Engineer.
3. No Piping Shall Be Run Exposed In Finished Areas.
4. All Plumbing Work Shall Be Prepared In Strict Accordance With The Specifications And With The Currently Adopted Edition Of The Prevailing State Code As Well As All Local Regulations That May Apply. In Case Of Conflict Between The Contract Documents And A Governing Code Or Ordinance The More Stringent Standard Shall Apply.
5. Rough-in Dimensions Of Fixtures Must Be Coordinated With The General Contractor.
6. Provide Shut-Off Valves On Hot And Cold Water Supply Pipes At Each Fixture.
7. At Each Hot Water Return Piping Connection To The Hot Water Supply Piping The Contractor Shall Furnish And Install Isolation, Balancing And Check Valves. Balance To 1.0 GPM Unless Otherwise Noted.
8. Provide Water Hammer Arrestors At Each Flush Valve Or Bank Of Flush Valves. Coordinate Location Of Access Door With Architect.
9. All Tempered Water Outlets For Public And Healthcare Handwashing Shall Be Provided With Temperature Limiting Devices That Confirm To ASSE 1070 Or CSA B125.3.
10. Access Panels Shall Be Provided As Necessary To Allow For Access To Valves And Water Hammer Arrestors. All Access Panels Shall Be Provided And Installed By The General Contractor. Plumbing Contractor Shall Be Responsible For Their Location.
11. No PVC Or ABS Piping Shall Be Used In Any Above Grade Plumbing Installations.
12. Install All Required Cleanouts To Clear Equipment And Fixtures.
13. All Fixtures Shall Be Provided With Standard Trap And Cleanout.

PARTIAL SYMBOLS & ABBREVIATIONS

Identifier	Description	Identifier	Description
—○—	Connect To Existing	CO	Cleanout
—□—	Disconnect From Existing	CW	Cold Water
—○—	Existing Equipment	DFU	Drainage Fixture Units
—□—	Demo Equipment	FCO	Floor Cleanout
—■—	New Equipment	FD	Floor Drain
—○—	Equipment Type Equipment Number	GCO	Grade Cleanout
—○—	Existing Piping To Remain	HB	Hose Bibb
—○—	Existing Piping To Be Removed	HW	Hot Water
—○—	Sanitary Piping Above Floor	HWR	Hot Water Return
—○—	Sanitary Piping Below Floor	LAV	Lavatory
—○—	Vent Piping	RD	Roof Drain
—○—	Cold Water Piping	SA	Shock Arrestor
—○—	Hot Water Piping	TP	Trap Primer
—○—	Hot Water Return Piping	V	Vent
—○—	Gate Valve	VTR	Vent Through Roof
—○—	Ball Valve	WC	Water Closet
—○—	Pipe Up Through Floor Above Or Through Section Cut Line	WCO	Wall Clean Out
—○—	Pipe Drop / Offset Down	WSFU	Water Supply Fixture Units
CO ○	Sanitary Clean Out	WH	Wall Hydrant
FCO ○	Floor Clean Out		
GCO ○	Grade Clean Out		
WCO —	Wall Cleanout		
⊕	Vent Stack Riser Designation		
⊕ or ⊕	Floor Drain (See Schedules)		
—○—	Check Valve		
—○—	Backflow Preventer		
—○—	Water Meter Assembly		
HB —	Wall Hydrant / Hose Bib		



25 Bridge Avenue | Suite 201  
Red Bank, NJ 07701  
732.741.4900 (o) | 732.741.4977 (f)

Kevin M Settembrino, AIA, LEED AP  
License No. AI 15163

OWNER  
County of Monmouth - Division  
of Engineering & Traffic Safety  
Hall of Records, Annex  
Freehold, NJ  
732.431.7760 (O) | 732.431.7765 (F)

CIVIL ENGINEERS  
Dynamic Engineering  
Consultants, PC  
1904 Main Street  
Lake Como NJ, 07719  
732-974-0198 (O) | 732-974-3521 (F)

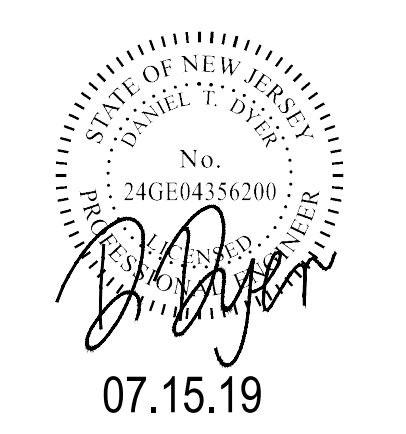
Daniel J Dougherty, PE/PP  
Lic. No. 41690

STRUCTURAL ENGINEERS  
MPP Engineers, LLC  
79 Mill Pond Road  
Jackson, NJ 08527  
609-489-5511 (O) | 609-489-5916 (F)

Scott W. McConnell, PE  
Lic. No. 40281

MECH/ ELECT / PLUMBING ENGINEERS  
DLB Associates  
Consulting Engineers  
285 Industrial Way West  
Eatontown, NJ 07724  
732-927-5127 (O) | 732-774-5000 (F)

Dan Dyer, PE  
Lic. No. 24GE04356200



No.	Description	Date
3	85% CD SUBMISSION	10.31.18
4	90% CD SUBMISSION	11.15.18
5	100% CD SUBMISSION	12.26.18
6	Final County Review	04.26.19
7	Addendum #3	07.15.19
8	Bulletin #1	09.16.19

JOB NO. 16.013  
DRAWN BY: CHECKED BY:  
DATE: Bid Documents 01/10/2019  
CAD FILE: --

INTERIOR  
RENOVATIONS &  
ALTERATIONS TO THE  
MONMOUTH COUNTY  
SEAVIEW BUILDING  
2407 ROUTE 66  
OCEAN, NJ,  
ENLARGED PART PLANS

P-403

This Drawing Is The Property Of DLB Associates Consulting Engineers, PC. It Was Prepared Exclusively For This Particular Project And Is Limited To This Project Only. Unauthorized Reproduction Or Other Use Of These Drawings Or Plans Is Prohibited.