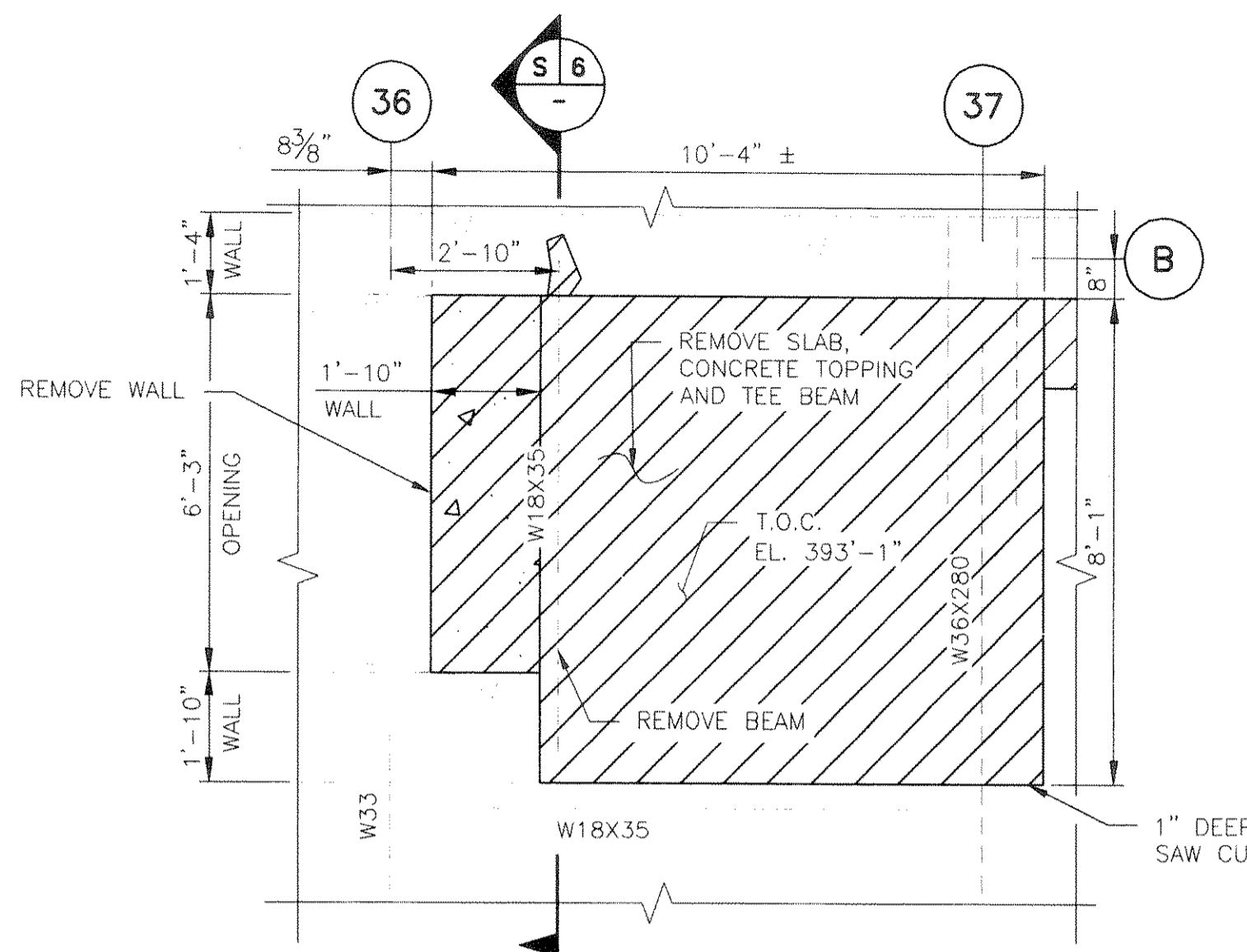


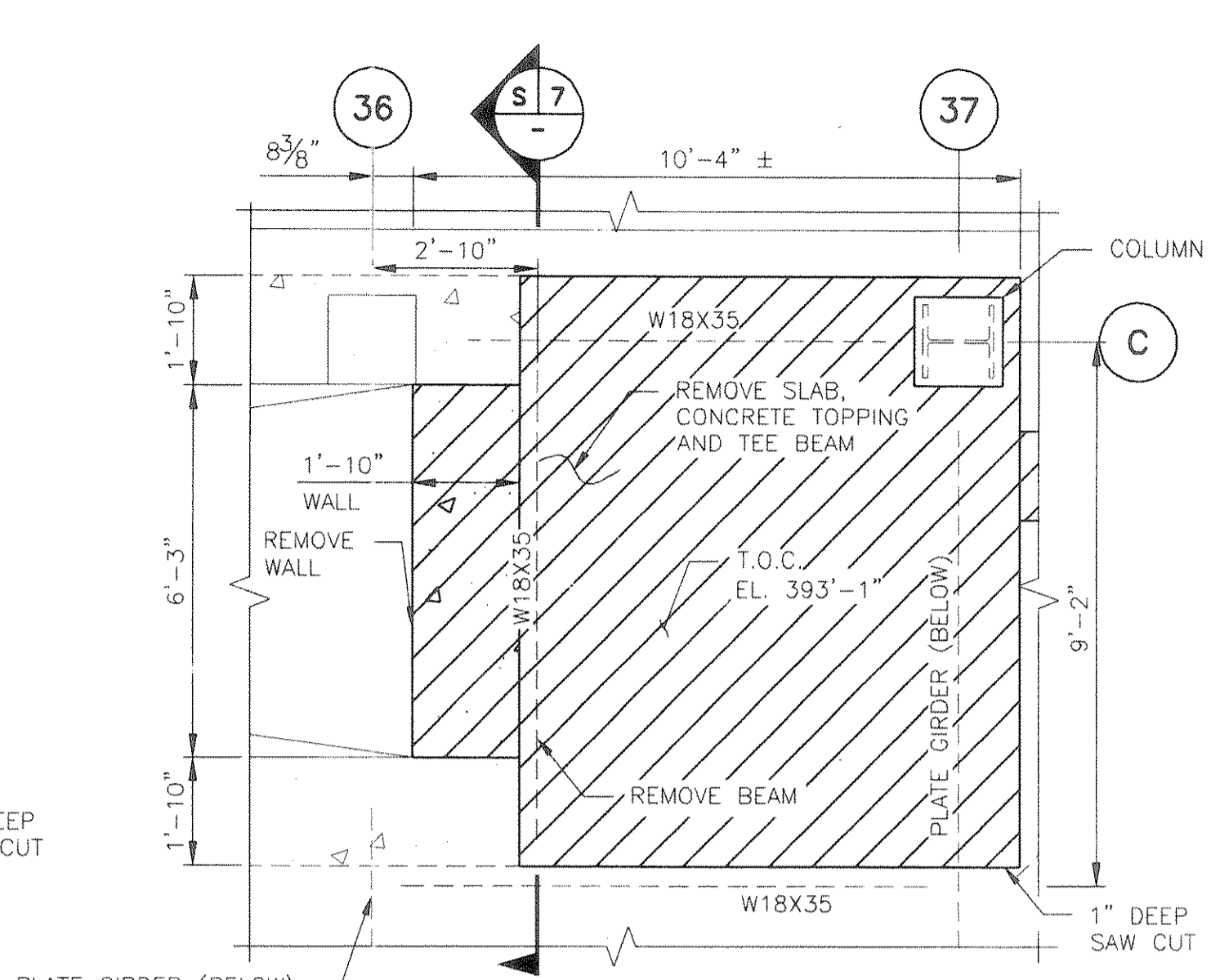
PORT AUTHORITY
TRANS-HUDSON CORPORATION

GANNETT FLEMING, P.C.
ENGINEERS AND ARCHITECTS

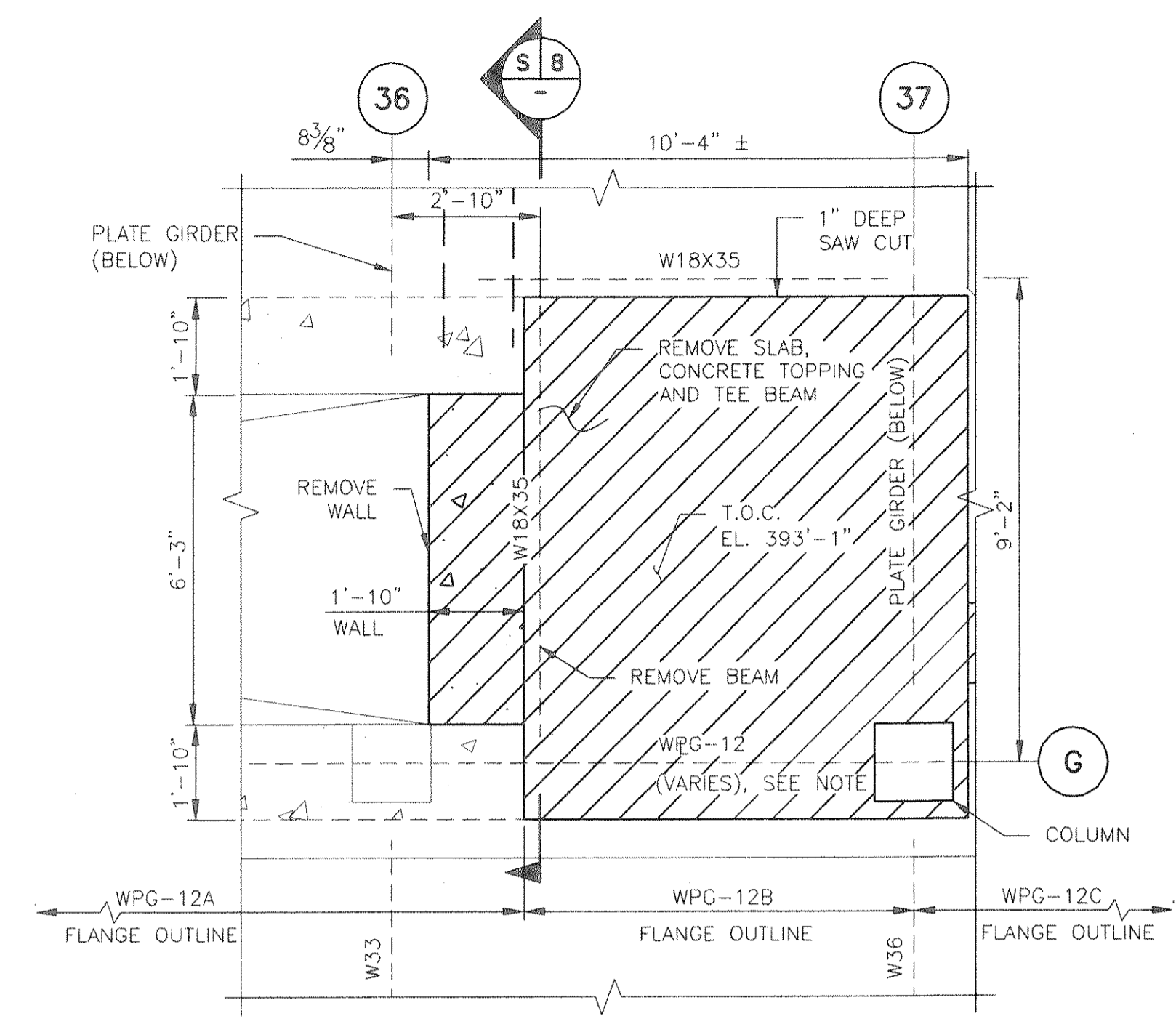
John D. Purdy
JOHN D. PURDY
N.J. Professional Engineer # 246GE03967100



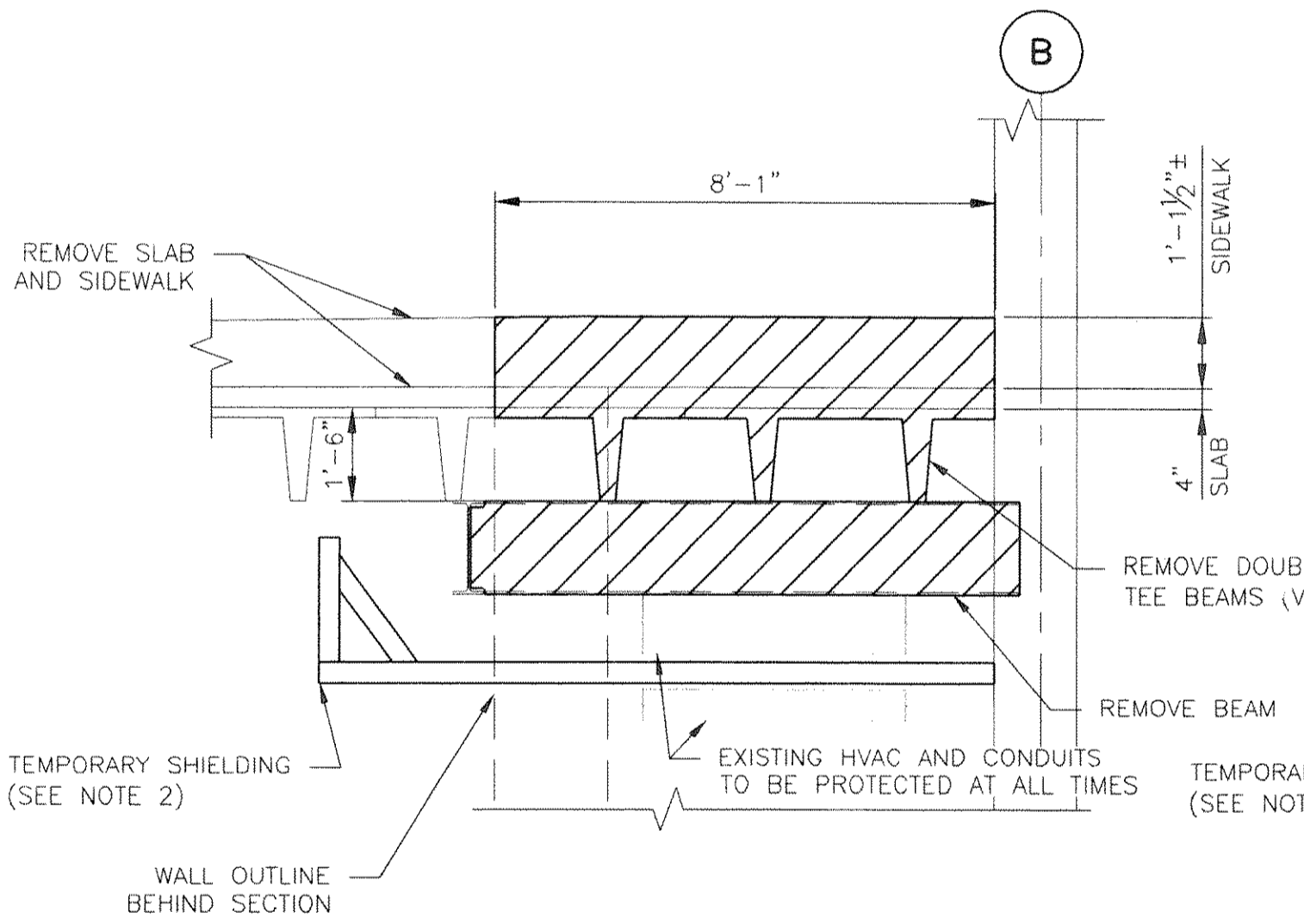
S6
DETAIL: BUS LEVEL
SCALE IN FEET



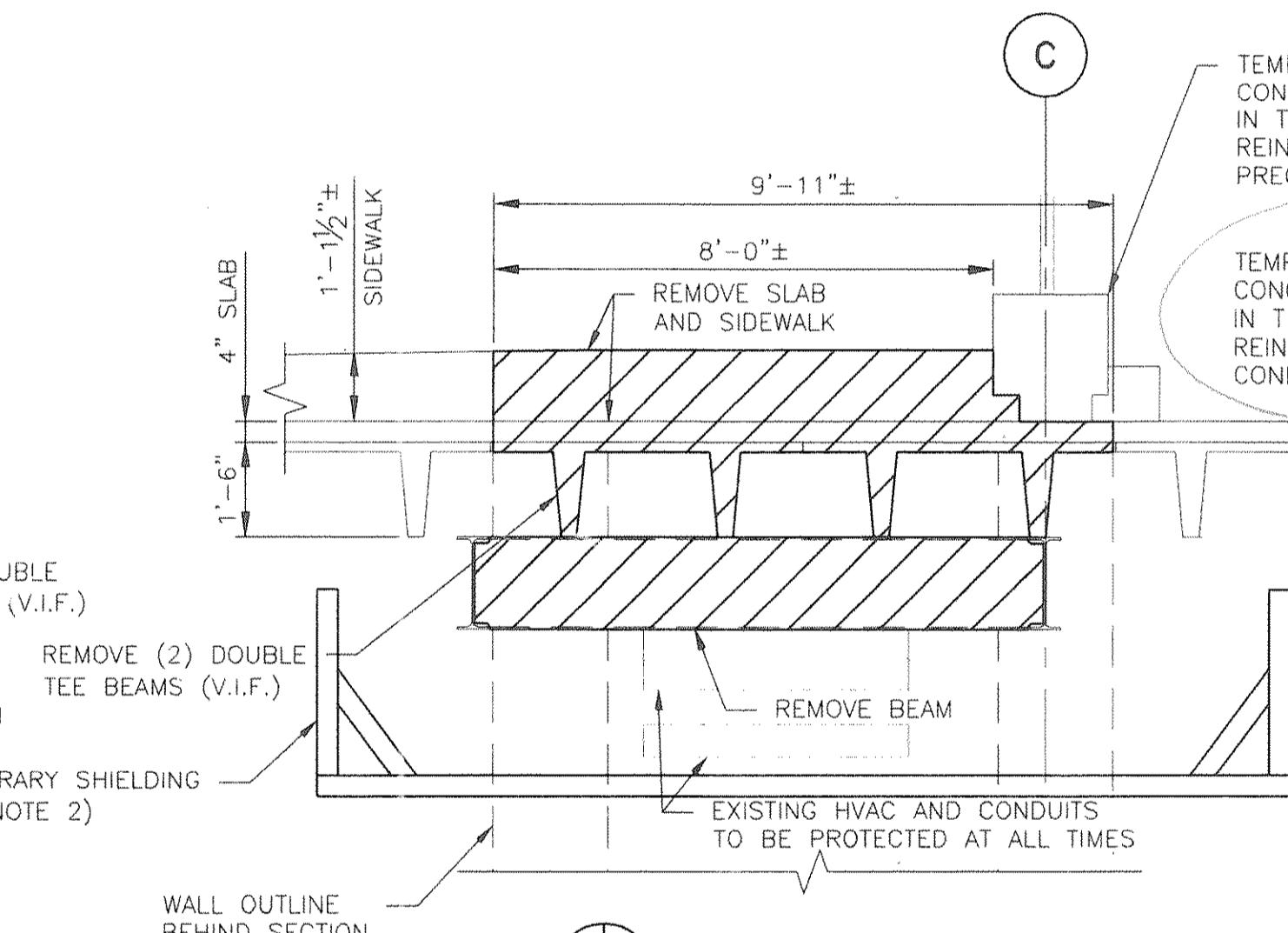
S7
DETAIL: BUS LEVEL
SCALE IN FEET



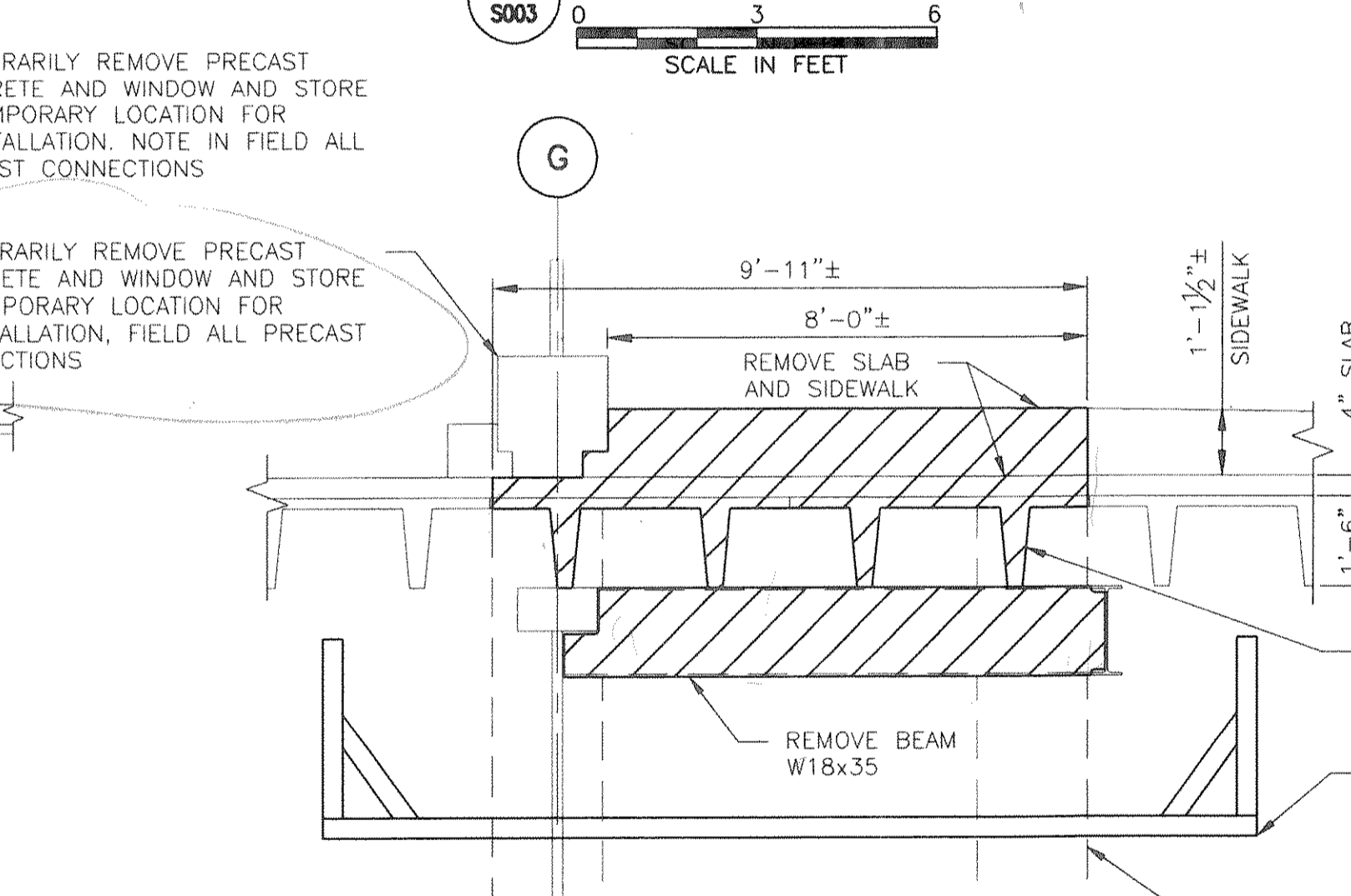
S8
DETAIL: BUS LEVEL
SCALE IN FEET



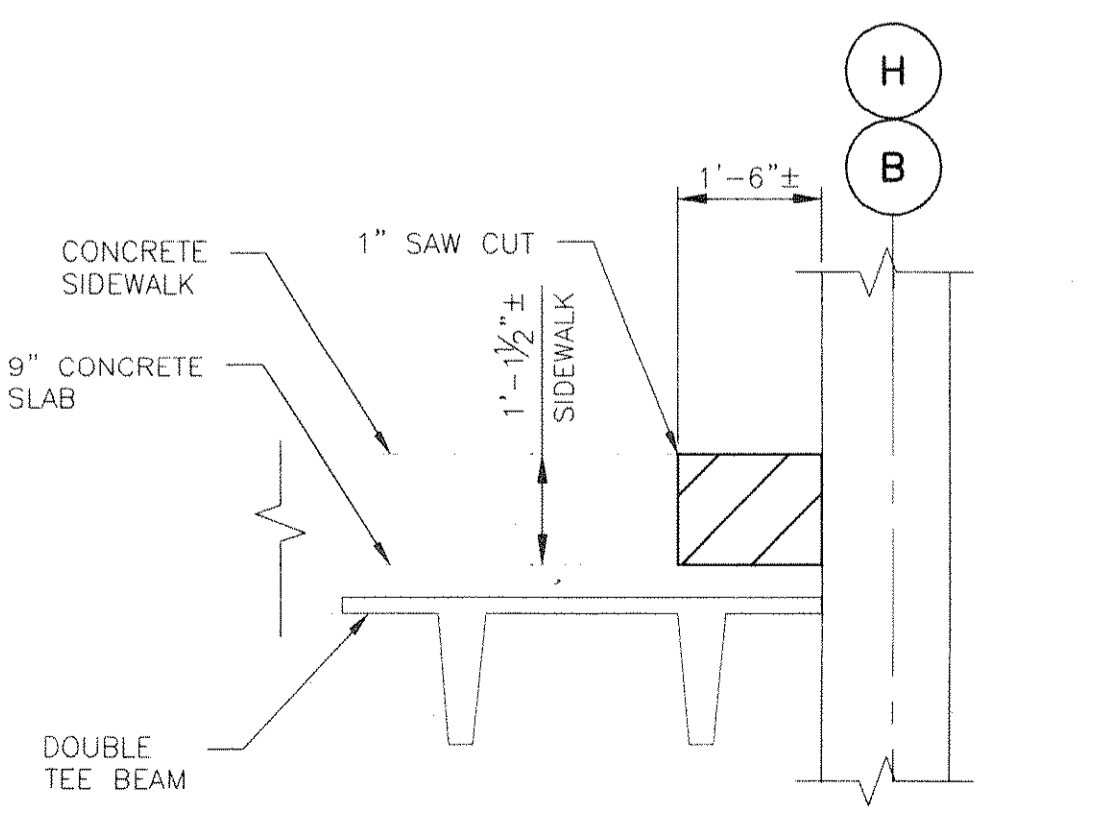
S6
SECTION: BUS LEVEL
SCALE IN FEET



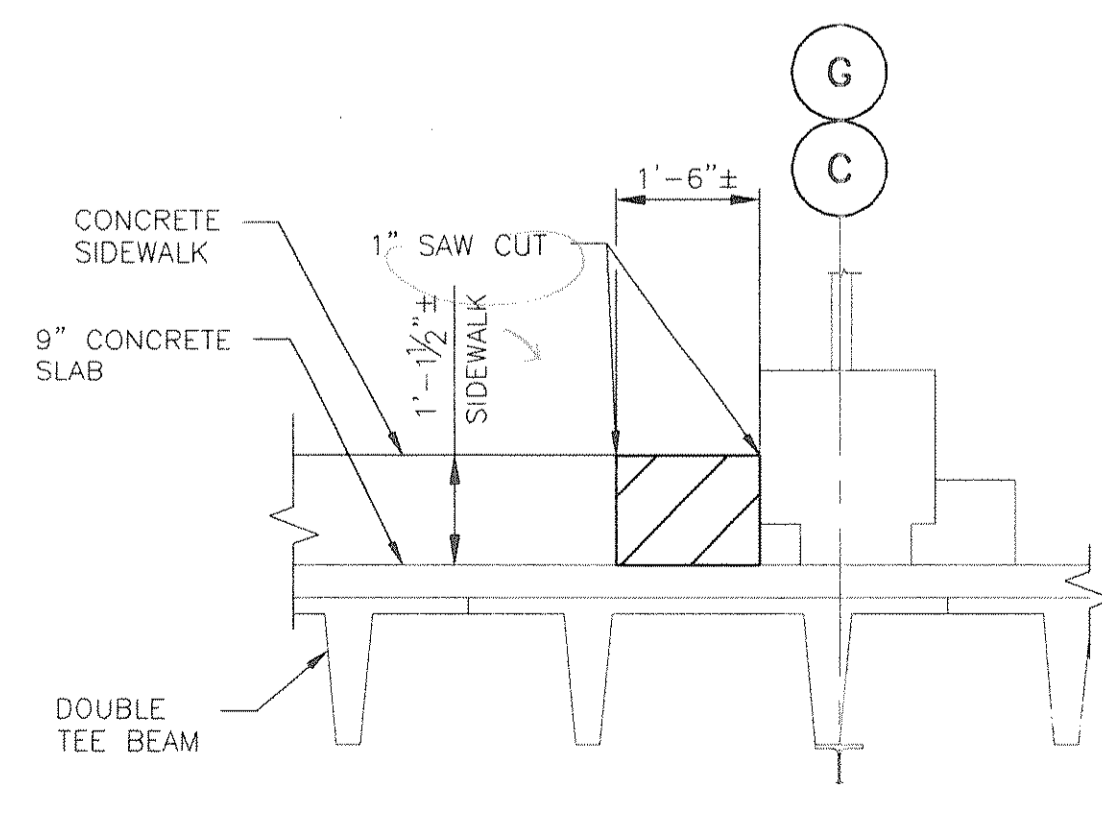
S7
SECTION: BUS LEVEL
SCALE IN FEET



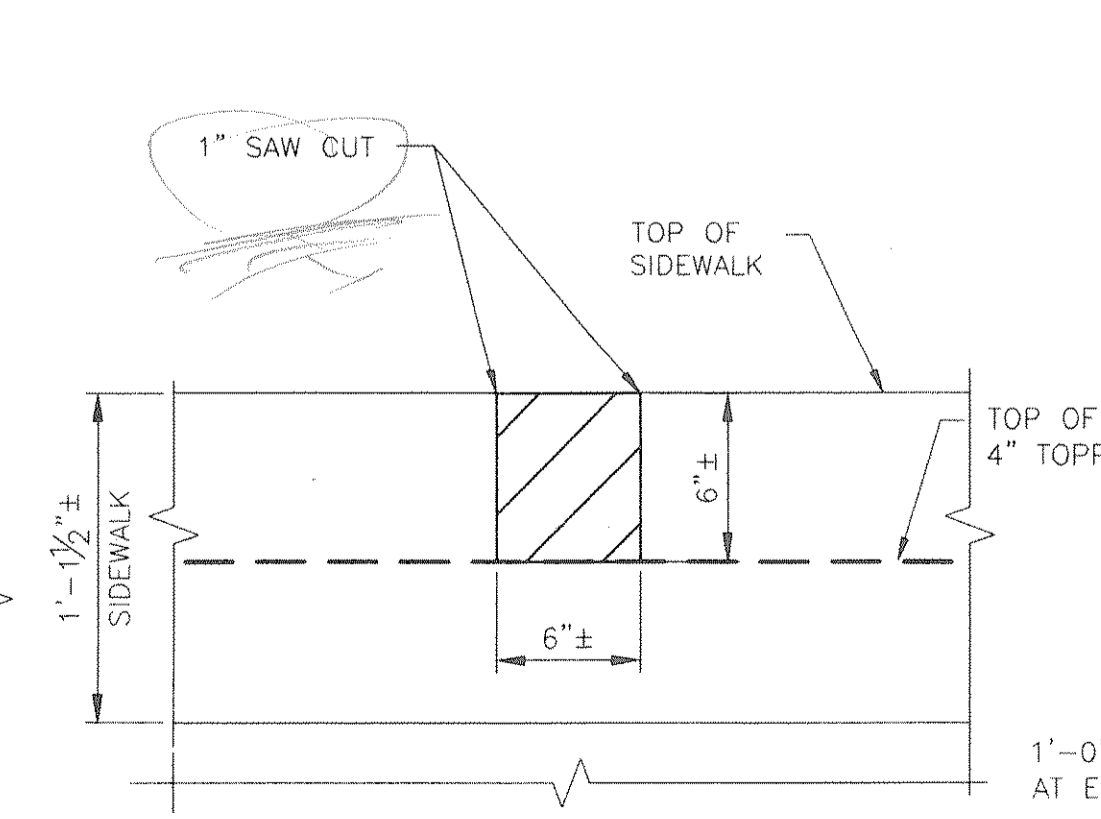
S8
SECTION: BUS LEVEL
SCALE IN FEET



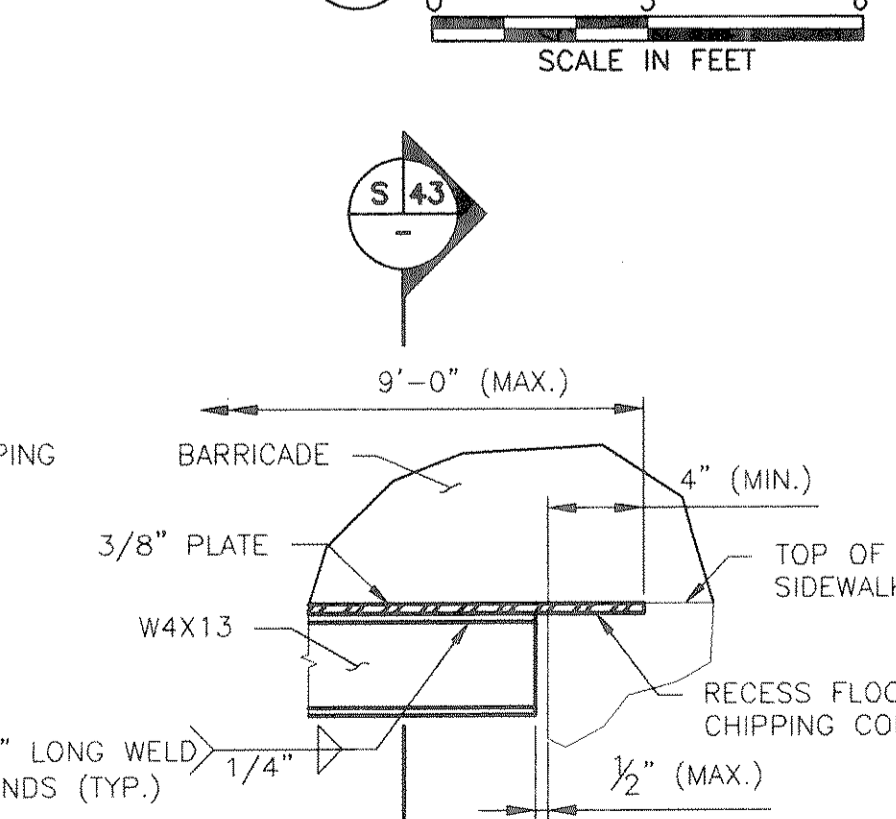
S9
SECTION: CONDUIT TRENCH
SCALE IN FEET



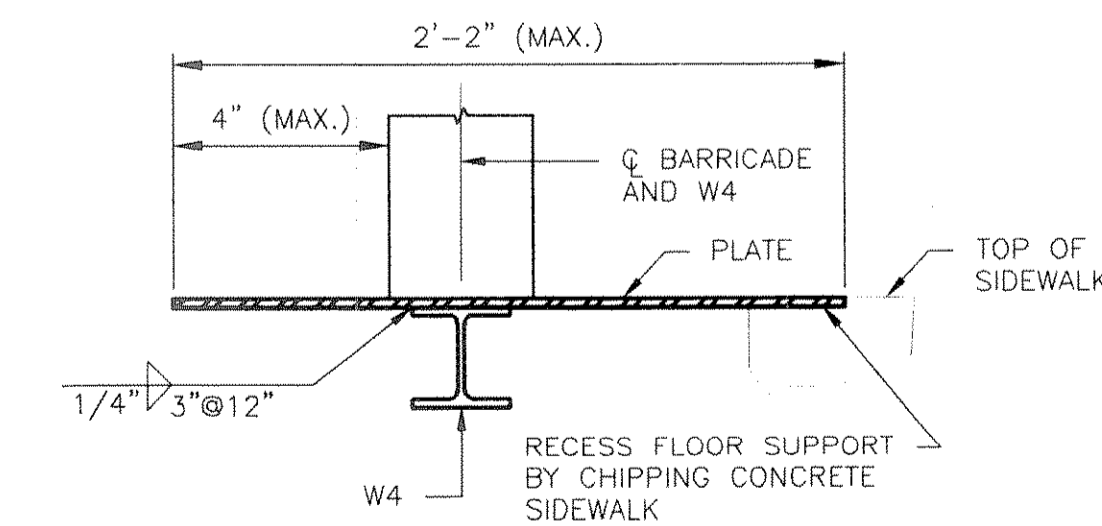
S10
SECTION: CONDUIT TRENCH
SCALE IN FEET



S11
SECTION: CONDENSATE TRENCH
SCALE IN FEET



D27
DETAIL: TEMPORARY FLOOR
SCALE IN FEET



S43
SECTION: TEMPORARY FLOOR
SCALE IN FEET

- NOTES**
- FOR PLATE GIRDER DIMENSIONS, SEE DWG. S001.
 - ALL LUMBER SHALL BE TREATED AND FIRE RETARDANT.

No.	Date	Revision	Approved
ENGINEERING DEPARTMENT			
JOURNAL SQUARE TRANSPORTATION CENTER			
STRUCTURAL			

Title
BUS TERMINAL ESCALATOR REPLACEMENT
BUS LEVEL REMOVAL SECTIONS AND DETAILS - I

All recipients of Contract documents, including bidders and those who do not bid and their prospective subcontractors and suppliers who may receive all or a part of the Contract documents or copies thereof, shall make every effort to ensure the secure and appropriate disposal of the Contract documents to prevent further disclosure of the information contained in the documents. Secure and appropriate disposal includes methods of document destruction such as shredding or arrangements with refuse handlers that ensure that third persons will not have access to the documents' contents either before, during, or after disposal. Documents may also be returned for disposal purposes to the Contract Desk on the 3rd Floor, 3 Gateway Center, Newark NJ 07102 or the office of the Director of Procurement, One Madison Avenue, 7th Floor, New York NY 10010.

Designed by **J. Villa** Drawn by **J. Villa** Checked by **R. Acoury**
Date **11/17/2008**
Contract Number **PAT-214.004**
Drawing Number **S009**
PID# 07957000