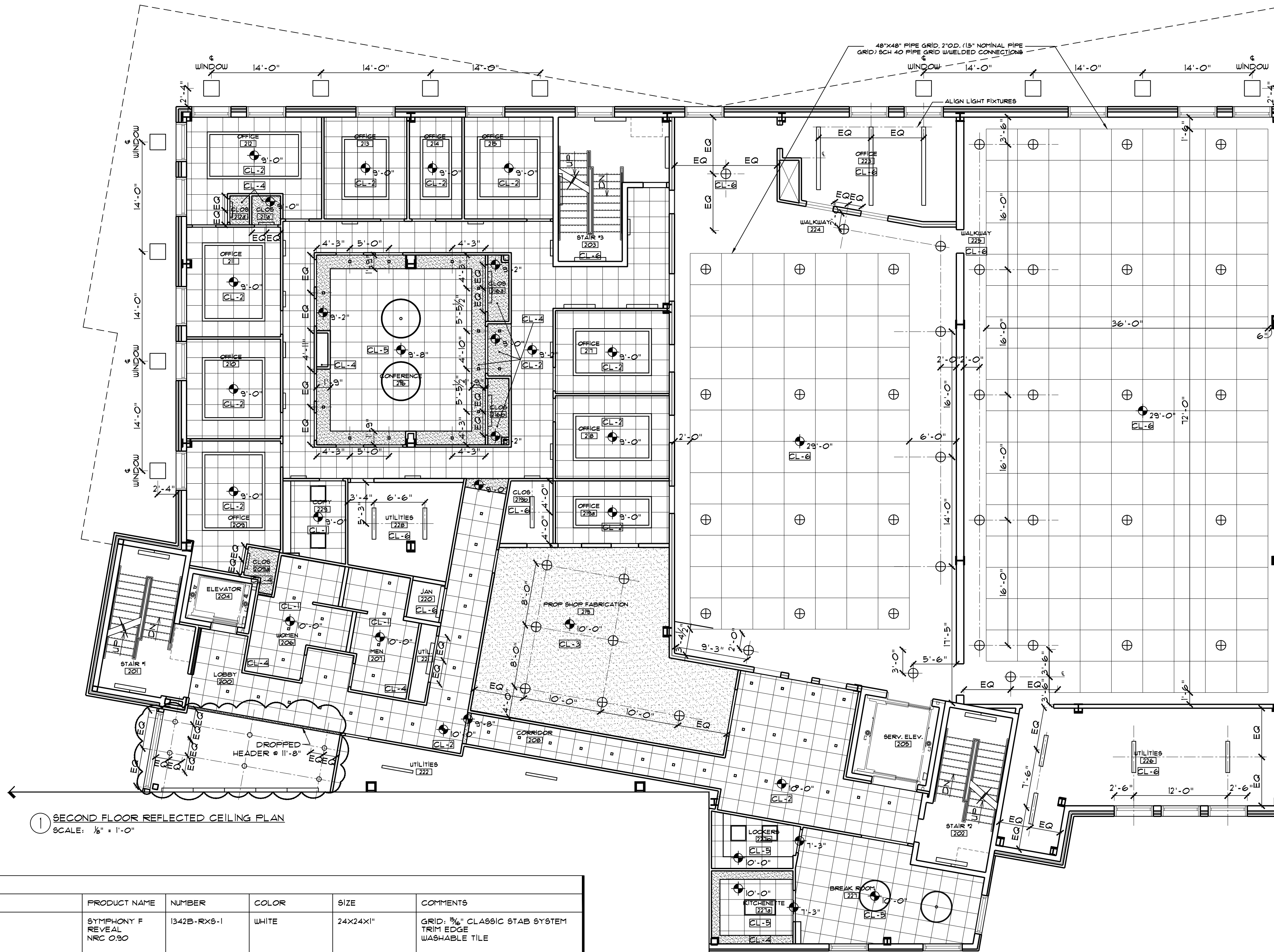


LEGEND

NO CEILING	
GYPSUM BOARD CEILING	
24"x24" ACOUSTIC CEILING	
48"x48" PIPE GRID	

ACCESS DOORS IN GYPSUM BOARD CEILINGS SHALL BE KARP "KATR" RECESSED FIRE RESISTANT CEILING DOOR FITTED WITH ZERO INTERNATIONAL MATS ACOUSTIC SEAL. APPLY RATED CEILING MATERIAL TO MATCH ADJACENT CEILING & MAINTAIN CONTINUITY OF ASSEMBLY



1 SECOND FLOOR REFLECTED CEILING PLAN
SCALE: 1/8" = 1'-0"

CODE	DESCRIPTION	MANUFACTURER	PRODUCT NAME	NUMBER	COLOR	SIZE	COMMENTS
CL-1	ACOUSTIC CEILING PANEL	PERFORMA / CTC	SYMPHONY F REVEAL NRC 0.30	1342B-RX6-1	WHITE	24x24x1"	GRID: 3/4" CLASSIC STAB SYSTEM TRIM EDGE WASHABLE TILE
CL-2	ACOUSTIC CEILING PANEL	PERFORMA / CTC	SYMPHONY M REVEAL NRC 0.15 CAC 36	1222B-RX6-1	WHITE	24x24x3/4"	GRID: 3/4" CLASSIC STAB SYSTEM TRIM EDGE WASHABLE TILE
CL-3	DIRECT ATTACH ACOUSTIC PANEL ON GYPSUM BOARD W/ACOUSTICAL SUSPENSION SYSTEM	EGOPHON / CTC	FOCUS F NRC 0.80	3542 2800 T 4 G	WHITE	24x24x3/4"	ADHESIVE: FRANKLIN INTERNATIONAL TITEBOND SOLVENT FREE WASHABLE TILE SEE SPECS FOR SUSPENSION SYSTEM
CL-4	GYPSUM BOARD ON STANDARD SUSPENSION SYSTEM	CERTAINTED STANDARD SUSPENSION SYSTEM			WHITE		SEE SPECS FOR GYPSUM BOARD COORDINATE LOCATION OF ACCESS PANELS FOR MEP
CL-5	ACOUSTIC CEILING TILE	PERFORMA / CTC	ADAGIO REVEAL NRC 0.80 HIGH CAC	HCAC-1612B-10P-1	WHITE	24x24x1 1/2"	GRID: 3/4" CLASSIC STAB SYSTEM TRIM EDGE WASHABLE TILE
CL-6	OPEN TO STRUCTURE ABOVE ALL STRUCTURE TO BE COATED W/ FIRE RESISTANT MATERIAL SEE FIRE PROTECTION PLANS FOR FIRE RESISTANT COATING				OWNER SELECTED		SEE SPECIFICATIONS FIRE RESISTANT MATERIAL ONLY REQUIRED # BOTTOM OF ROOF DECK ALL OTHER STEEL TO BE COATED
CL-7	SAME AS CL-6 W/ACOUSTIC COATING SEE FIRE PROTECTION PLANS FOR FIRE RESISTANT COATING				OWNER SELECTED		SEE SPECIFICATIONS FIRE RESISTANT MATERIAL ONLY REQUIRED # BOTTOM OF ROOF DECK ALL OTHER STEEL TO BE COATED