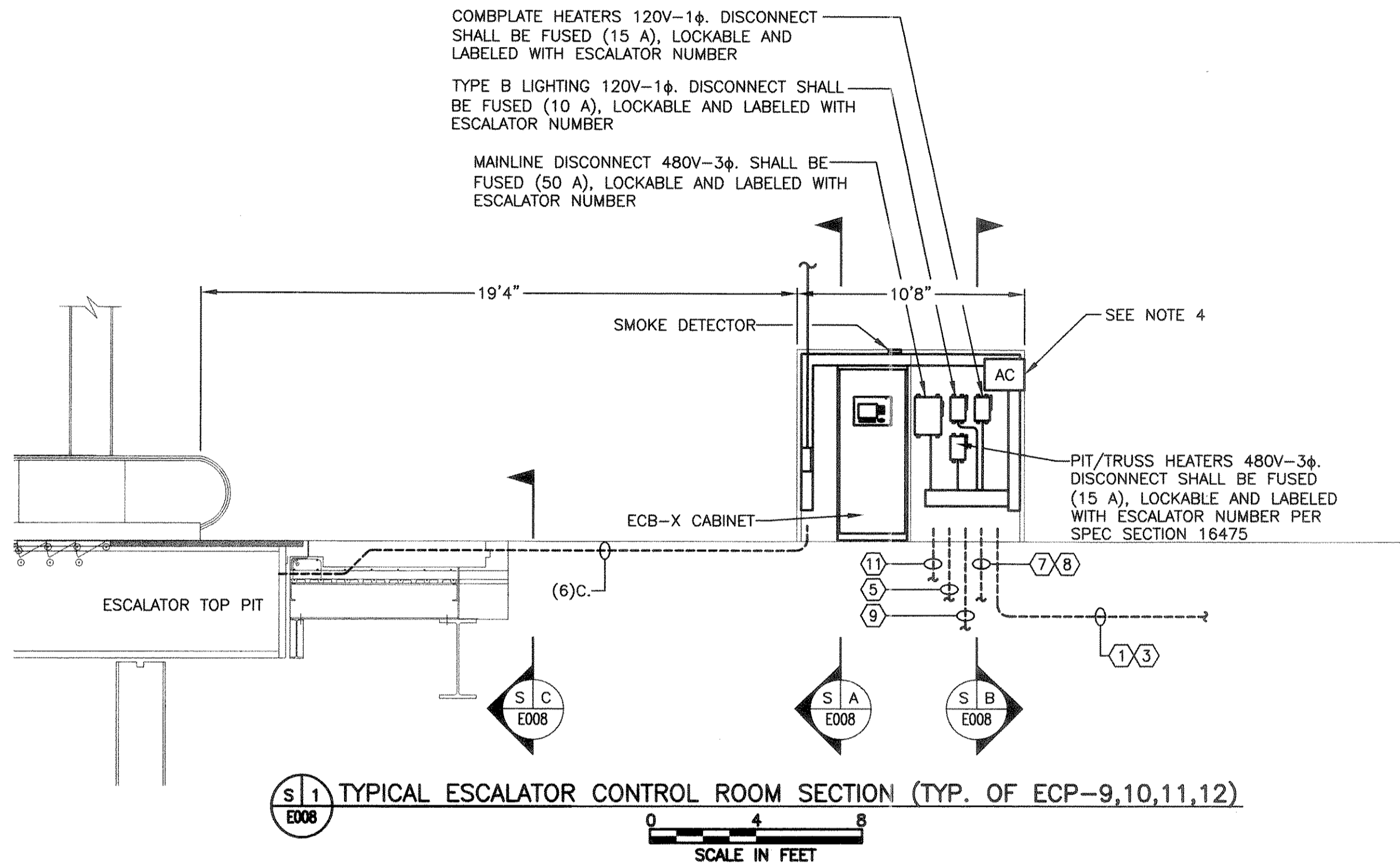


LIGHTING FIXTURE SCHEDULE							
TYPE	QTY.	DESCRIPTION	LAMP	VOLTAGE	MANUFACTURER AND CATALOG NO.	MOUNTING	SEE NOTES
A	8	2X2' FLUORESCENT	(2)-24W 24" TSHO	110V	COLUMBIA FNPV2-2-24-PP-120-2H-PEBU	SURFACE	OR APPROVED EQUAL
B	16	VAPOR PROOF IND LIGHT	FLOURESCENT EQ 100W	120V	STONCO ROUGHLYTE (VW)/W VXL13, VGCH100, V131 ACC.	WALL	OR APPROVED EQUAL

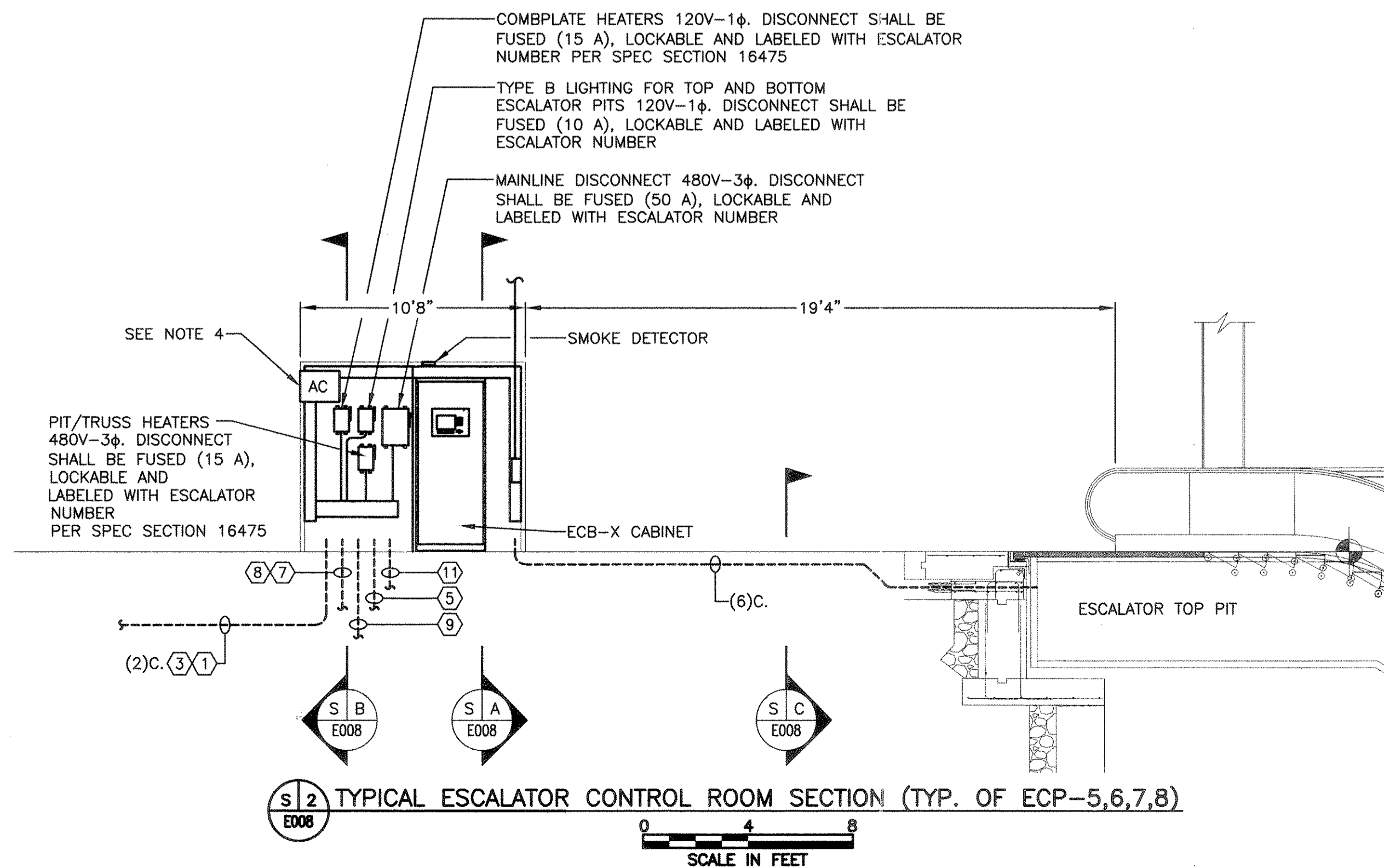
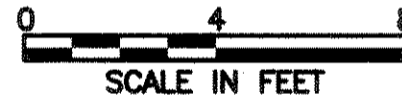
COMPLATE HEATERS 120V-1 ϕ . DISCONNECT SHALL BE FUSED (15 A), LOCKABLE AND LABELED WITH ESCALATOR NUMBER

TYPE B LIGHTING 120V-1 ϕ . DISCONNECT SHALL BE FUSED (10 A), LOCKABLE AND LABELED WITH ESCALATOR NUMBER

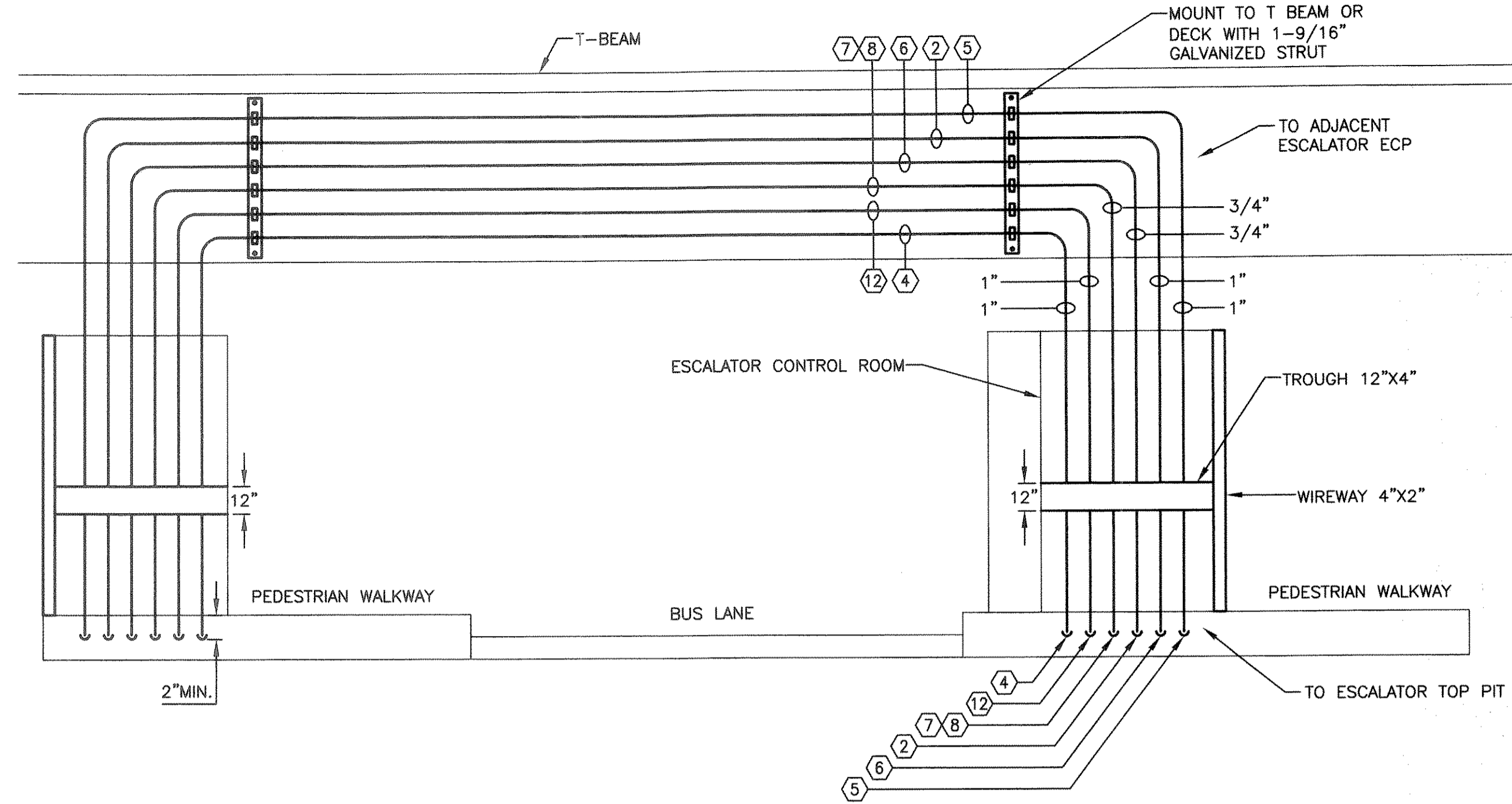
MAINLINE DISCONNECT 480V-3 ϕ . SHALL BE FUSED (50 A), LOCKABLE AND LABELED WITH ESCALATOR NUMBER



S1 TYPICAL ESCALATOR CONTROL ROOM SECTION (TYP. OF ECP-9,10,11,12)



S2 TYPICAL ESCALATOR CONTROL ROOM SECTION (TYP. OF ECP-5,6,7,8)

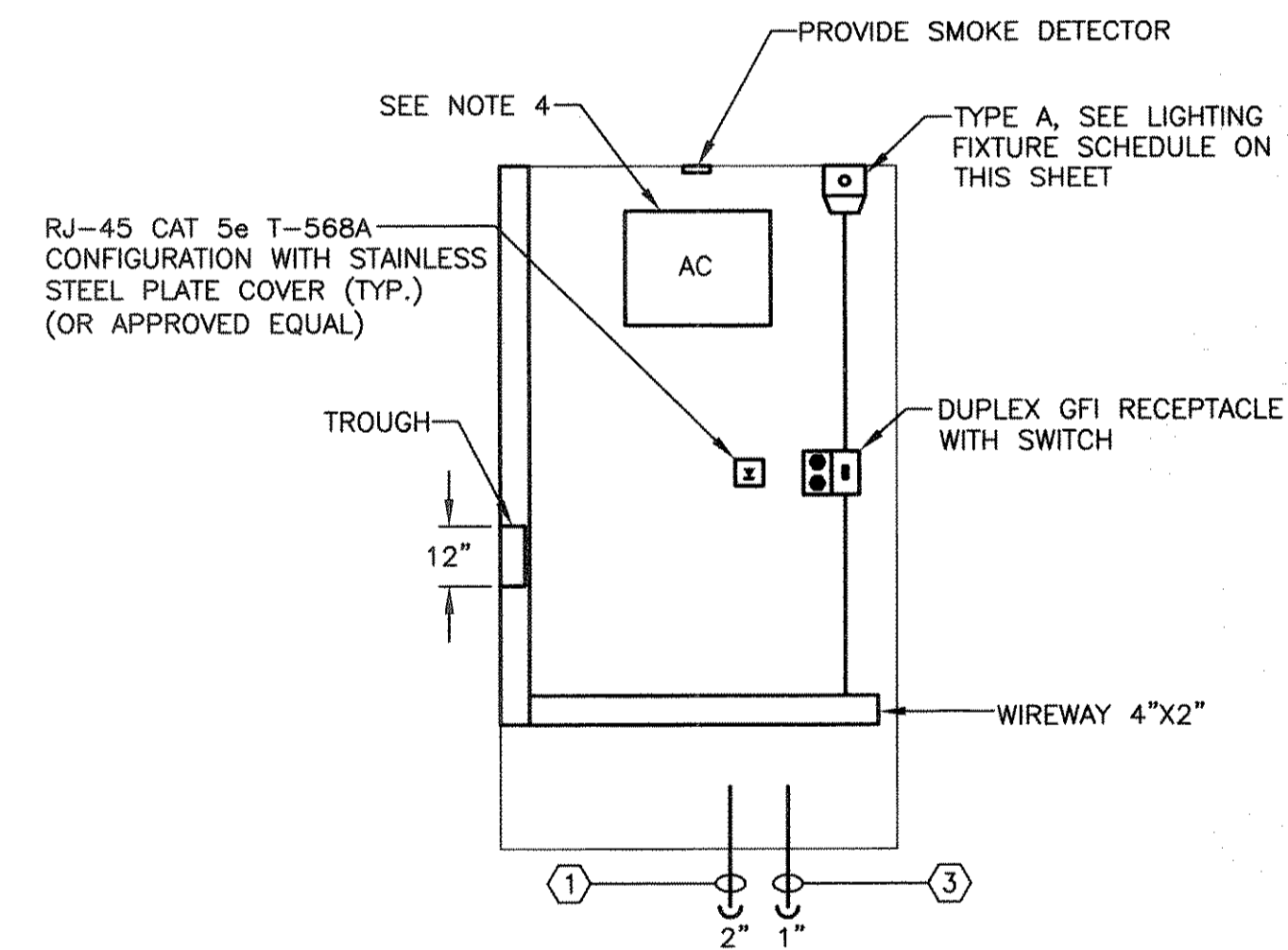


S3 SECTION "A" SCALE IN FEET

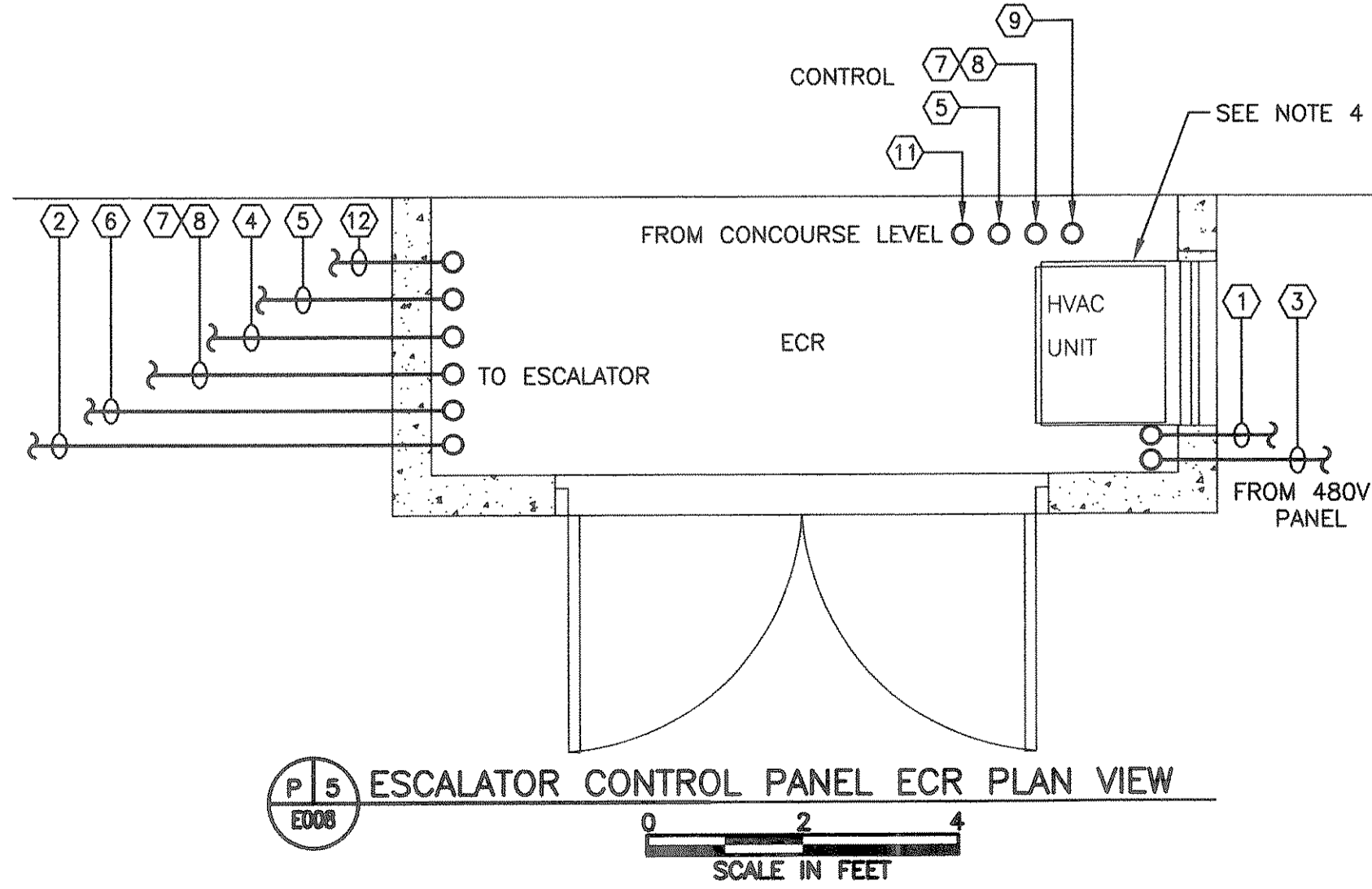


NOTES:

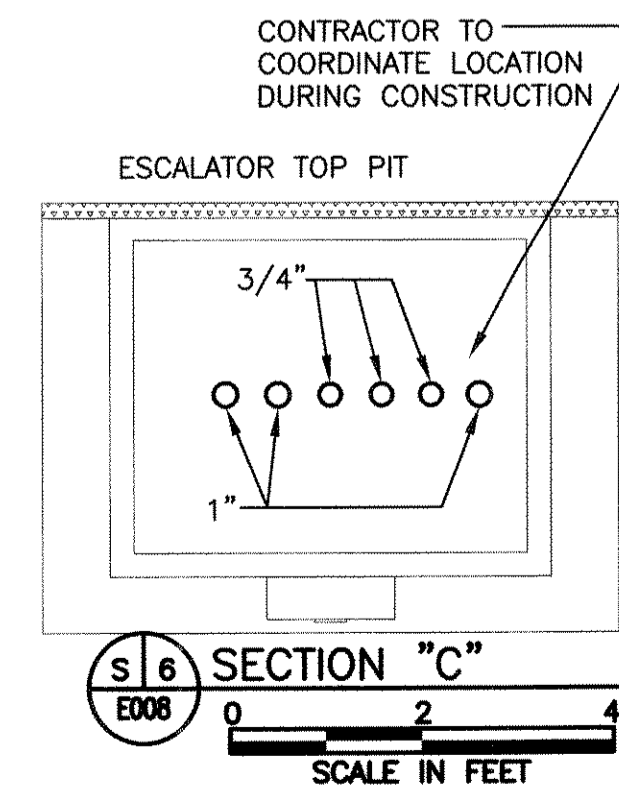
- SEE CONTRACT DRAWING E004 FOR CONDUITS TO BE REUSED.
- SEE CONTRACT DRAWING E005 FOR PANEL ECB-1 LOCATION.
- SEE CONTRACT DRAWINGS E004 & E005 FOR KEYED NOTES.
- COORDINATE INSTALLATION WITH CONTRACT MECHANICAL DRAWINGS.
- FOR LEGEND, ABBREVIATIONS, AND GENERAL NOTES SEE CONTRACT DRAWING E001.
- COORDINATE MAINLINE DISCONNECT 100A WITH CONTRACT DRAWINGS V002 AND E010.



S4 SECTION "B" SCALE IN FEET



S5 ESCALATOR CONTROL PANEL ECR PLAN VIEW



S6 SECTION "C" SCALE IN FEET



No.	Date	Revision	Approved
ENGINEERING DEPARTMENT			
JOURNAL SQUARE TRANSPORTATION CENTER			

ELECTRICAL
Title
BUS TERMINAL ESCALATOR REPLACEMENT

TYPICAL ESCALATOR EQUIPMENT ROOM PLANS

This drawing subject to conditions in contract. All inventions, ideas, designs and methods herein are reserved to Port Authority and may not be used without its written consent.
All recipients of Contract documents, including bidders and those who do not bid and their prospective subcontractors and suppliers who may receive all or a part of the Contract documents or copies thereof, shall make every effort to ensure the secure and appropriate disposal of the Contract documents to prevent further disclosure of the information contained in the documents. Secure and appropriate disposal includes methods of document destruction such as shredding or other approved methods of document destruction that ensure that third persons will not have access to the documents contents either before, during, or after disposal. Documents may also be returned for disposal purposes to the Contract Desk on the 3rd Floor, 3 Gateway Center, Newark NJ 07102 or the Office of the Director of Procurement, One Madison Avenue, 7th Floor, New York NY 10017.

T.GILLEN A.CONCHADO G.CAMPANELLA
Designed by Drawn by Checked by

Date 11/17/2008

Contract Number PAT-214.004

Drawing Number E008
PID# 07957000