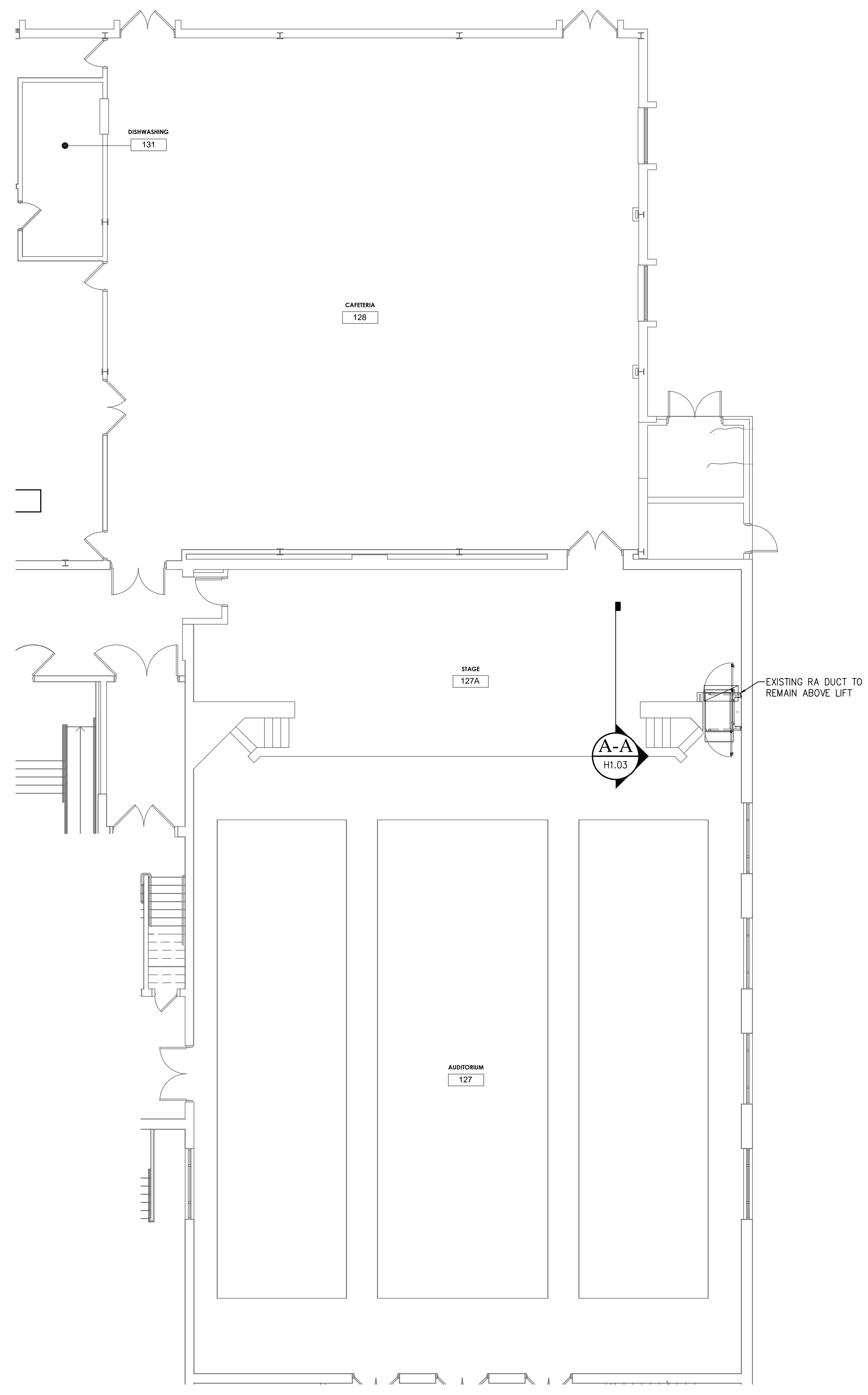
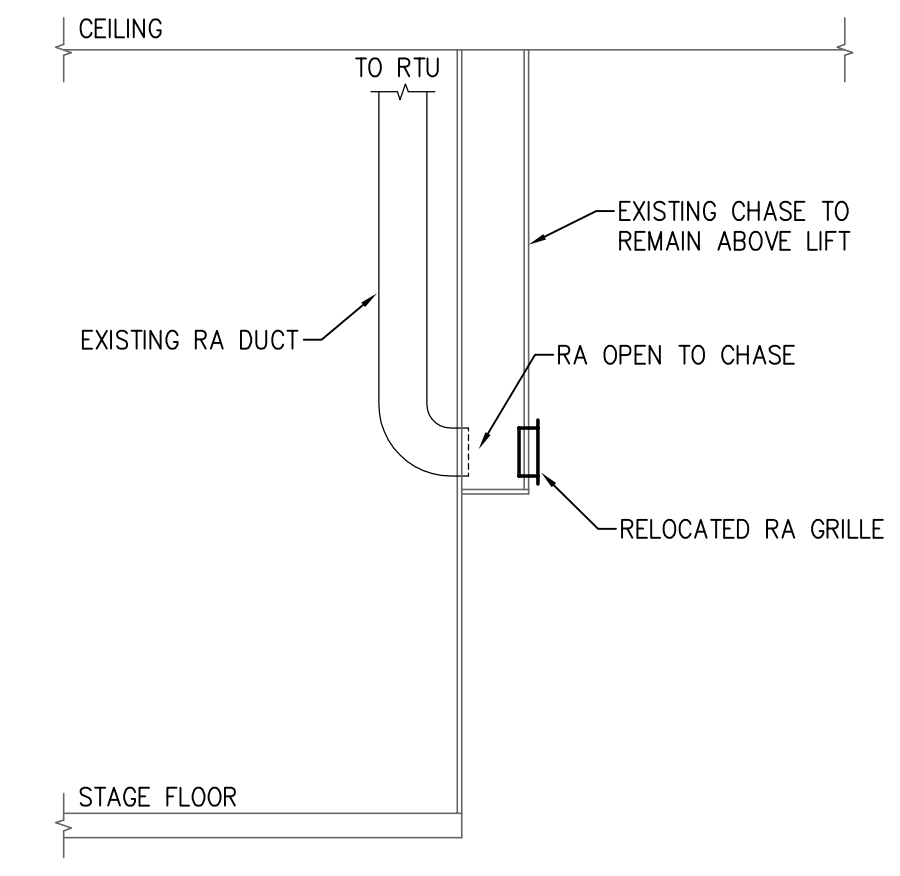


A B C D E F G H J K L M N O

1
2
3
4
5
6
7
8
9
10
11



1
H1.03
1/8" = 1'-0"
HVAC GROUND FLOOR PLAN



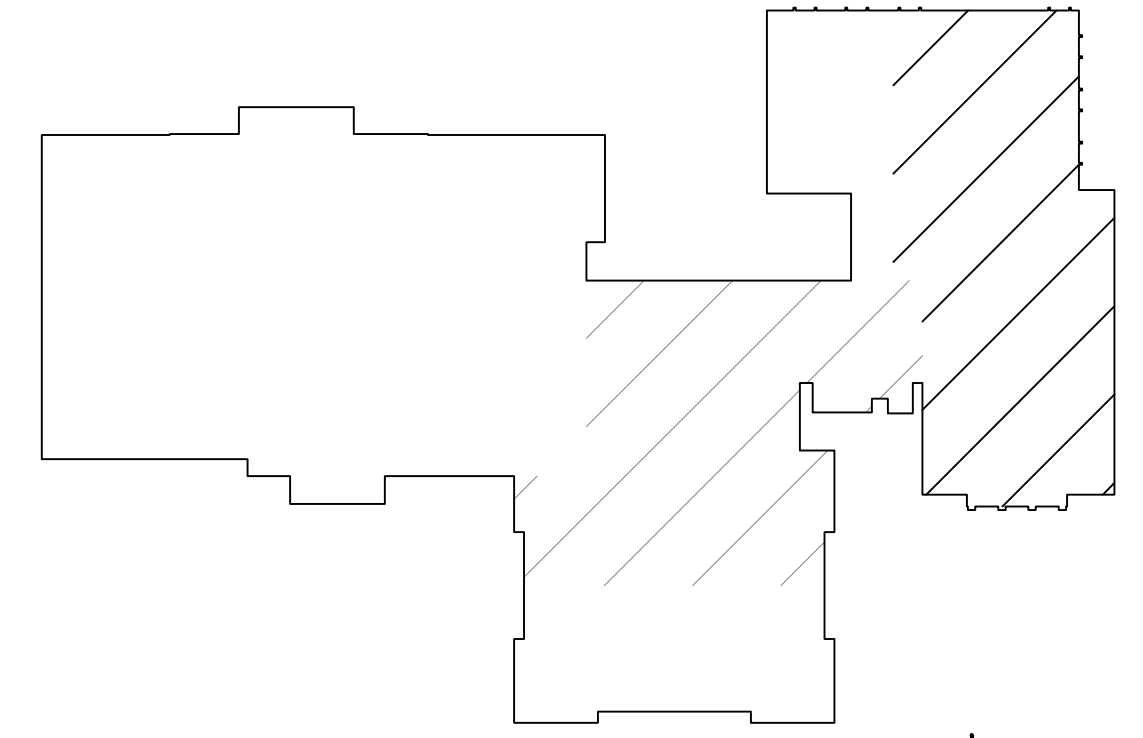
1
H1.03
NTS
SECTION A-A

GENERAL NOTES

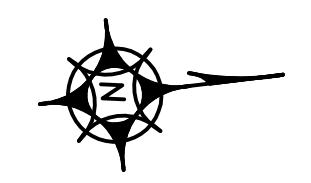
1. PROVIDE UL LISTED FIRE STOPPING AT ALL DUCT PENETRATIONS THROUGH CORRIDOR WALLS.

KEYED NOTES

- 1 40/8 DOUBLE WALL ACOUSTIC TRANSFER DUCT WITH 1" MINERAL WOOL AND PERFORATED LINER.
- 2 40/8 SHEET METAL AIR TRANSFER DUCT, COVER WITH 1/8" WIRE MESH MECHANICALLY FASTENED TO DUCT.
- 3 10'-0" LONG SECTION OF 1" DOUBLE WALL DUCT WITH 1" MINERAL WOOL AND PERFORATED LINER.
- 4 PROVIDE 30"W X 15" H LOUVER IN TOP SASH OF WINDOW. LOUVER BY GC, PROVIDE 30" X 15" X 24" DEEP PLENUM AT LOUVER.



KEY PLAN
N.T.S.



NJ Certificate of Authorization	
Eng'r. No.	24627837500
Arch. No.	21AC00012400
Date	01/15/2018
Checked	
Drawn	

KENNETH H. KARLE, R.A.
REGISTERED ARCHITECT
License No. NJ21A00890600

Revisions:

LAN ASSOCIATES
engineering • planning • architecture • surveying
445 GODWIN AVENUE, MIDLAND PARK, N.J. 07432 (201)447-6400

HVAC GROUND FLOOR PLAN
ADDITION TO WOODBRIDGE MIDDLE SCHOOL
WOODBRIDGE BOE
525 BARRON AVENUE
WOODBRIDGE, NJ 07095

Job No. 2.20211.07

File No. -

H1.03