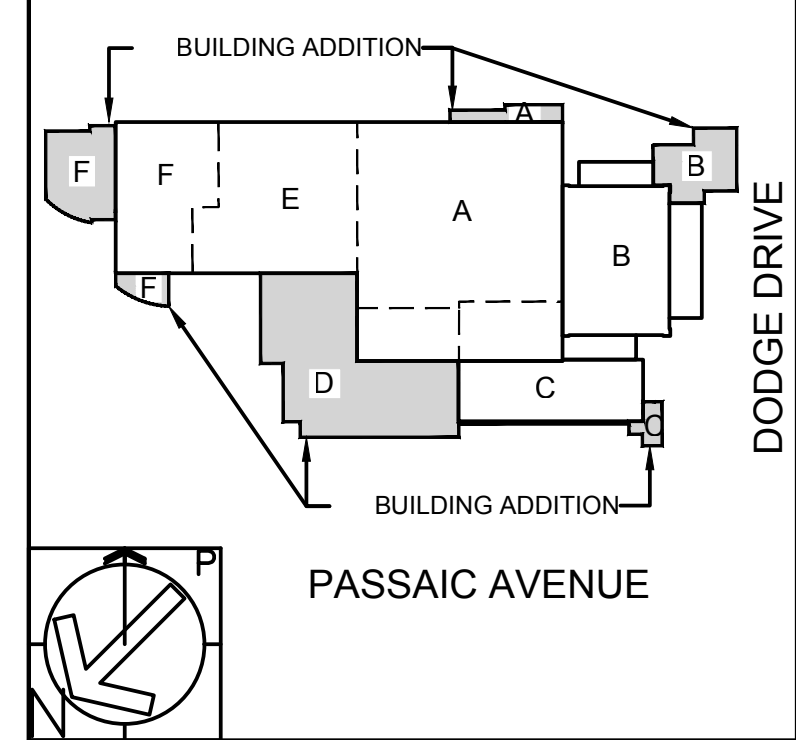


KEY NOTES

- 1 PROPOSED LOCATION OF NEW SPRINKLER CROSS MAIN.
- 2 RISER UP TO SECOND FLOOR FLOOR ZONE CONTROL VALVE ASSEMBLY.
- 3 SPRINKLER DRAIN DOWN FROM SECOND FLOOR.
- 4 SECOND FLOOR SPRINKLER DRAIN ABOVE CEILING.
- 5 TERMINATE SPRINKLER DRAIN 18" ABOVE GRADE WITH 45 DEGREE GALVANIZED STEEL TURN DOWN ELBOW. SEAL OPENING THROUGH WALL WATER TIGHT WITH APPROVED SILICONE SEALANT.
- 6 PROPOSED LOCATION FOR SPRINKLER BULK MAIN.



di cara | rubino
architects

30 galesi drive
wayne, nj 07470
tel 973.256.0202 | fax 973.256.0227

MEMBERS OF THE AMERICAN INSTITUTE OF ARCHITECTS

GERMANO RUBINO, AIA NJ # AI 08084
JOSEPH DI CARA, AIA NJ # AI 08265

NOT VALID FOR BUILDING UNLESS SIGNED AND SEALED BY ARCHITECT

X _____
Board President of Schools,

X _____
Superintendent of Schools,

FPA
FRENCH & PARRELO
ASSOCIATES

Corporate Office
1800 Route 34, Suite 101
Wall, NJ 07719
732.312.9800
Regional Offices
Hackettstown, NJ
New York, NY

KEVIN DWYER, PE
PROFESSIONAL ENGINEER, NJ LIC. No. 24GE0325400

BUILDING ADDITIONS AND INTERIOR RENOVATIONS AT THE :

ESSEX COUNTY WEST CALDWELL SCHOOL OF TECHNOLOGY
620 PASSAIC AVENUE
WEST CALDWELL, NJ 07006

ESSEX COUNTY SCHOOLS OF TECHNOLOGY

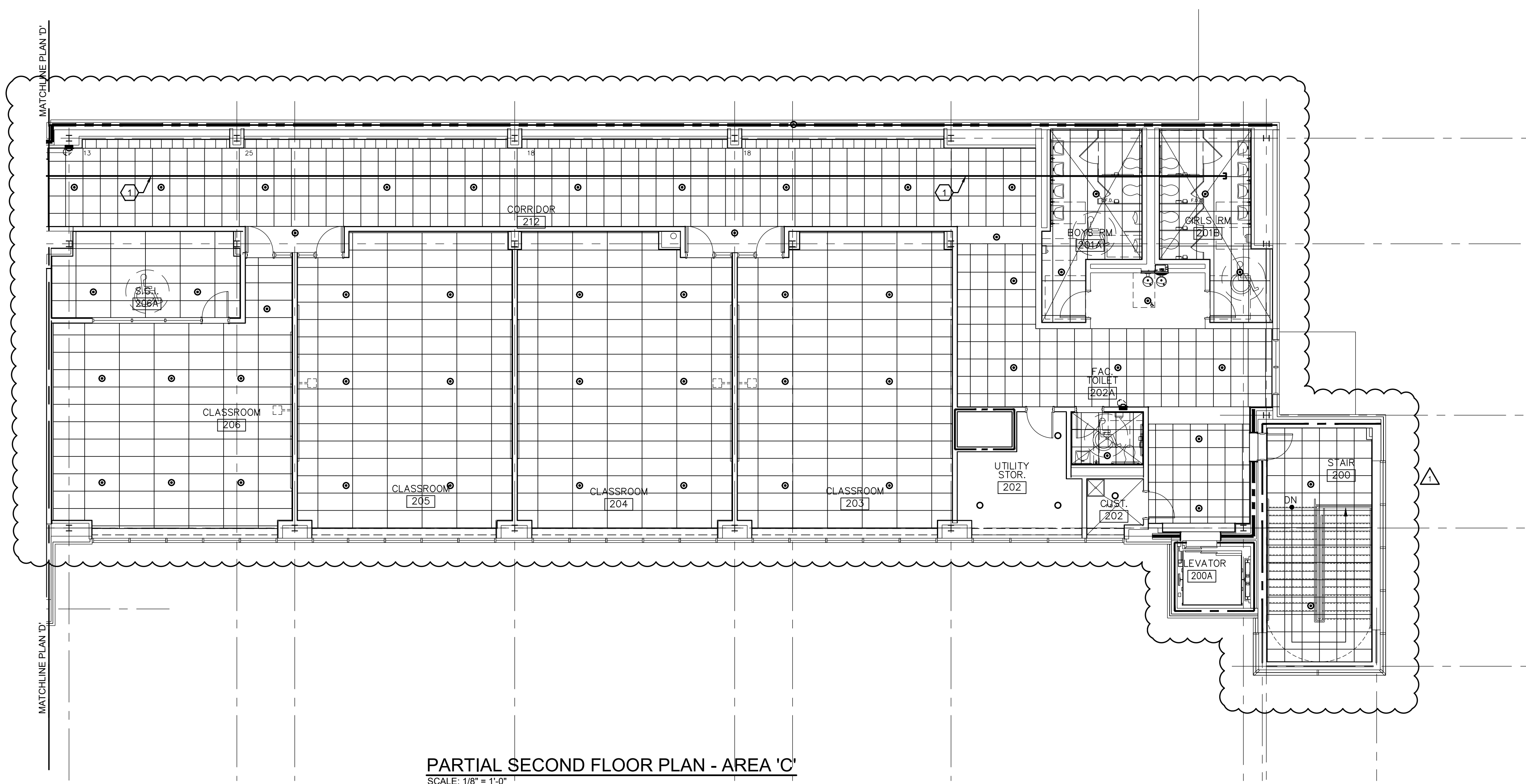
**FIRE PROTECTION
PARTIAL FIRST FLOOR
PLAN - AREA 'D'**

SCALE AS NOTED

REV.	DATE:	DRN	CHK	
	08/14/18	LDW	KLD	ISSUED FOR BID
1	09/14/18	JD	KLD	ADDENDUM #2

STATE PROJECT NO.
1390-080-16-1000

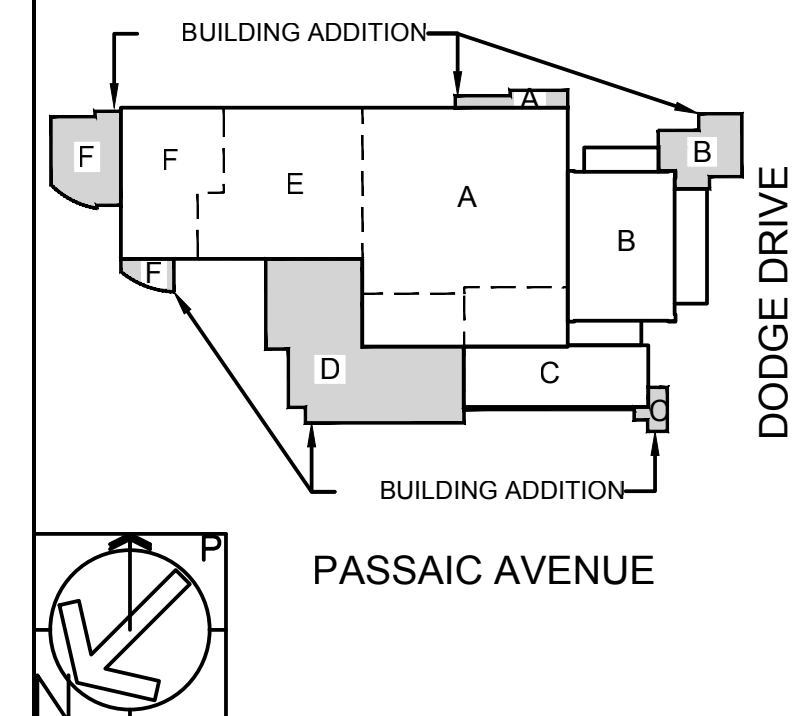
PROJECT NO. 3003	SHEET NO. FP4.4
----------------------------	---------------------------



PARTIAL SECOND FLOOR PLAN - AREA 'C'
SCALE: 1/8" = 1'-0"

KEY NOTES

- 1 PROPOSED LOCATION OF NEW SPRINKLER CROSS MAIN.



di cara | rubino
architects

30 galesi drive
wayne, nj 07470
tel 973.256.0202 | fax 973.256.0227

MEMBERS OF THE AMERICAN INSTITUTE OF ARCHITECTS

GERMANO RUBINO, AIA NJ # AI 08084
JOSEPH DI CARA, AIA NJ # AI 08265

NOT VALID FOR BUILDING UNLESS SIGNED AND SEALED BY ARCHITECT

X _____
Board President of Schools,

X _____
Superintendent of Schools,

FPA
FRENCH & PARRELLO
ASSOCIATES

Corporate Office
1800 Route 34, Suite 101
Wall, NJ 07719
732.312.9800
Regional Offices
Hackettstown, NJ
New York, NY

KEVIN DWYER, PE
PROFESSIONAL ENGINEER, NJ LIC. No. 24GE0325400

BUILDING ADDITIONS AND INTERIOR RENOVATIONS AT THE :

ESSEX COUNTY WEST CALDWELL SCHOOL OF TECHNOLOGY
620 PASSAIC AVENUE
WEST CALDWELL, NJ 07006

ESSEX COUNTY SCHOOLS OF TECHNOLOGY

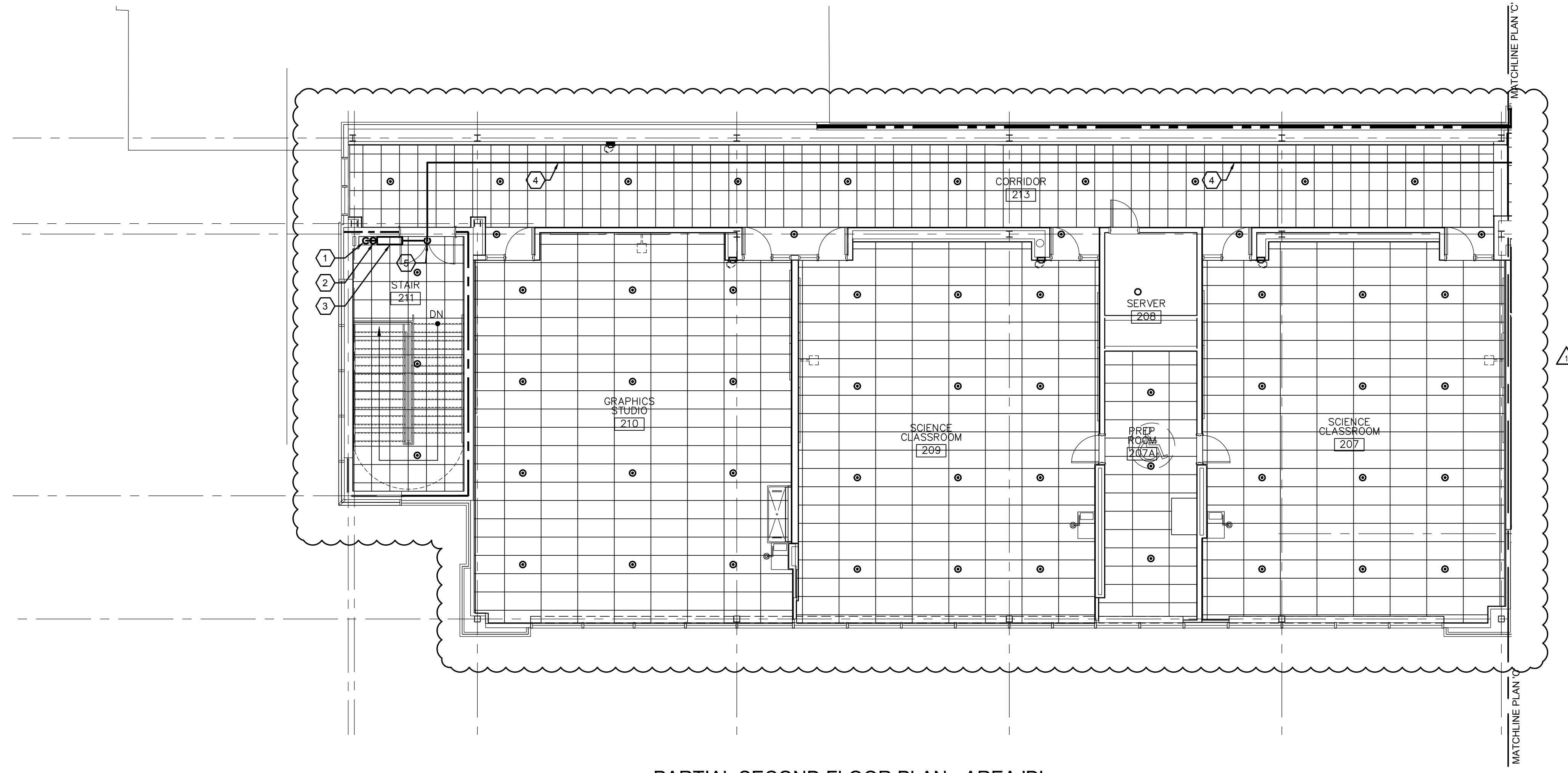
FIRE PROTECTION
PARTIAL SECOND FLOOR
PLAN - AREA 'C'

SCALE AS NOTED

REV.	DATE:	DRN	CHK	
	08/14/18	LDW	KLD	ISSUED FOR BID
1	09/14/18	JD	KLD	ADDENDUM #2

STATE PROJECT NO.
1390-080-16-1000

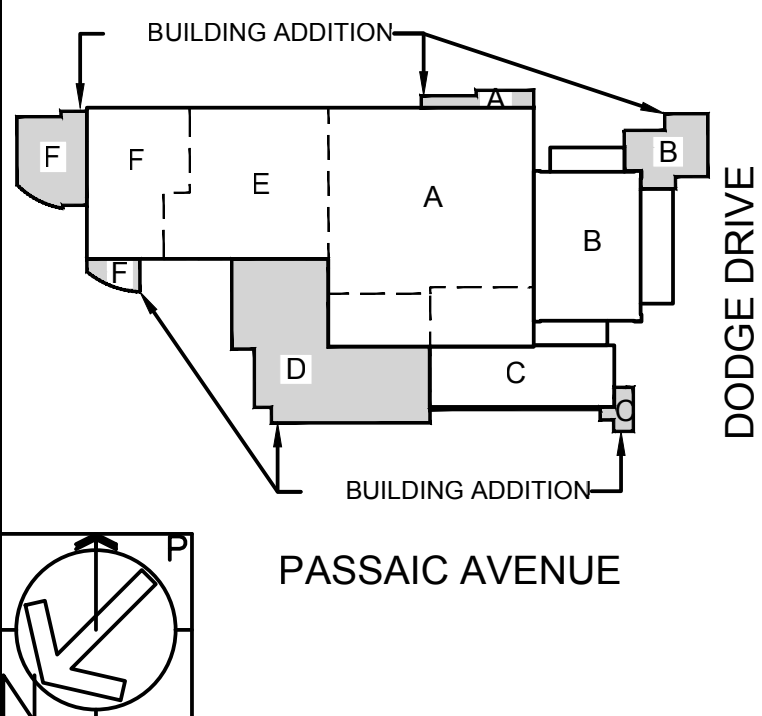
PROJECT NO. SHEET NO.
3003 FP4.7



PARTIAL SECOND FLOOR PLAN - AREA 'D'
SCALE: 1/8" = 1'-0"

KEY NOTES

- 1 SPRINKLER RISER UP FROM FIRST FLOOR.
- 2 SPRINKLER DRAIN DOWN TO FIRST FLOOR.
- 3 FLOOR CONTROL VALVE ASSEMBLY BELOW CEILING. SEE FLOOR CONTROL VALVE DETAIL FOR MOUNTING HEIGHT.
- 4 PROPOSED LOCATION OF NEW SPRINKLER CROSS MAIN.
- 5 ELBOW UP SO THAT PIPING ENTERS ABOVE CORRIDOR CEILING.



di cara | rubino
architects

30 galesi drive
wayne, nj 07470
tel 973.256.0202 | fax 973.256.0227

MEMBERS OF THE AMERICAN INSTITUTE OF ARCHITECTS

GERMANO RUBINO, AIA NJ # AI 08084
JOSEPH DI CARA, AIA NJ # AI 08265

NOT VALID FOR BUILDING UNLESS SIGNED AND SEALED BY ARCHITECT

X
Board President of Schools,

X
Superintendent of Schools,

FPA
FRENCH & PARRELLO
ASSOCIATES

Corporate Office
1800 Route 34, Suite 101
Wall, NJ 07719
732.312.9800
Regional Offices
Hackettstown, NJ
New York, NY

KEVIN DWYER, PE
PROFESSIONAL ENGINEER, NJ LIC. No. 24GE03525400

BUILDING ADDITIONS AND INTERIOR RENOVATIONS AT THE :

ESSEX COUNTY WEST CALDWELL SCHOOL OF TECHNOLOGY
620 PASSAIC AVENUE
WEST CALDWELL, NJ 07006

ESSEX COUNTY SCHOOLS OF TECHNOLOGY

FIRE PROTECTION
PARTIAL SECOND FLOOR
PLAN - AREA 'D'

SCALE AS NOTED

REV.	DATE:	DRN	CHK	
	08/14/18	LDW	KLD	ISSUED FOR BID
1	09/14/18	JD	KLD	ADDENDUM #2

STATE PROJECT NO.
1390-080-16-1000

PROJECT NO. 3003 SHEET NO. FP4.8