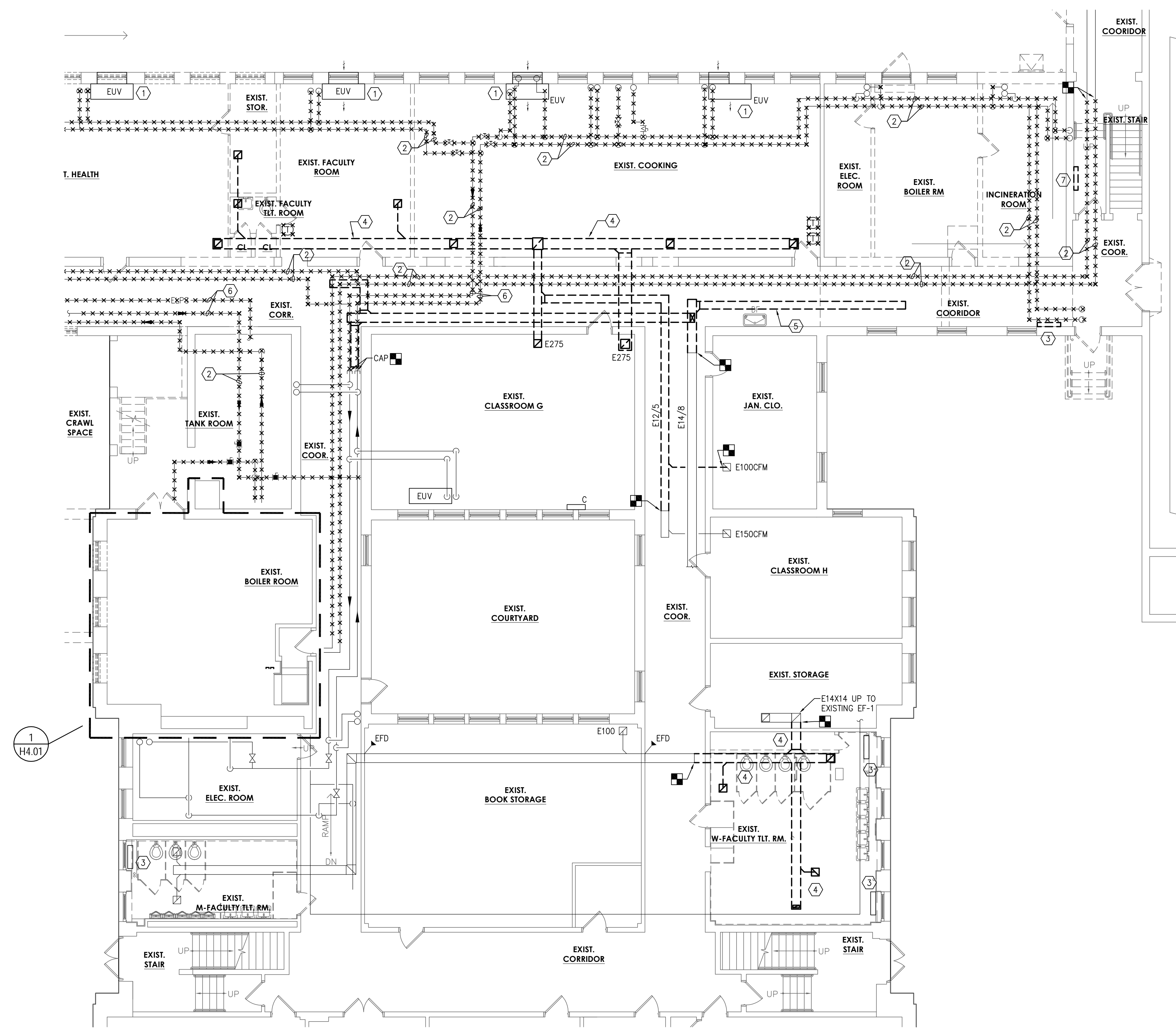
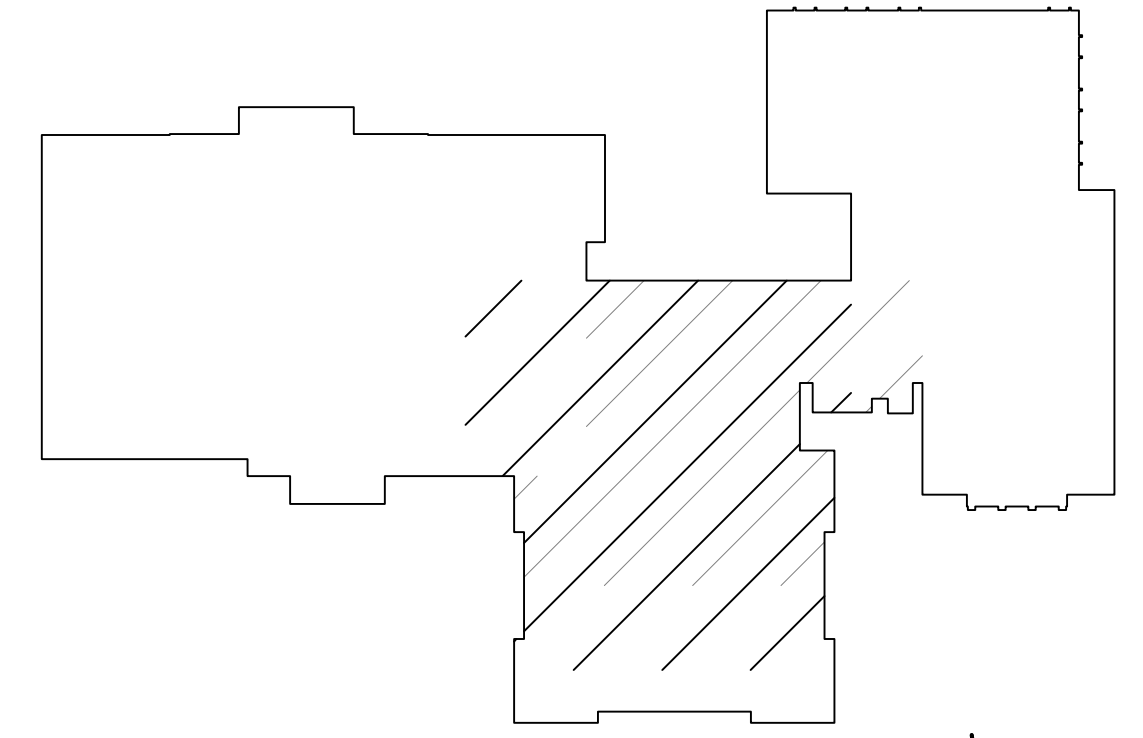


- ### KEYED NOTES
- ① REMOVE UNIT VENTILATOR AND ASSOCIATED LOUVER, DUCTWORK, WALL SENSOR, CONTROL WIRING, AND HOT WATER PIPING.
 - ② REMOVE HWS/HWR PIPING, ASSOCIATED SUPPORTS, AND HANGERS.
 - ③ REMOVE CONVECTOR AND ALL ASSOCIATED CONTROLS, PIPING, AND SUPPORTS. CAP PIPING AT MAIN.
 - ④ REMOVE EXHAUST DUCTWORK AND ASSOCIATED SUPPORTS.
 - ⑤ REMOVE SUPPLY DUCTWORK AND ASSOCIATED SUPPORTS.
 - ⑥ REMOVE EXISTING STEAM AND CONDENSATE PIPING IN ITS ENTIRETY FOR THE ENTIRE LENGTH OF THE CORRIDOR. REMOVE ALL SUPPORTS AND ACCESSORIES.
 - ⑦ REMOVE ABANDONED CAST IRON STEAM RADIATOR.



1 HVAC GROUND FLOOR REMOVALS PLAN
HR02 1/8" = 1'-0"



KEY PLAN
N.T.S.

NJ Certificate of Authorization	
Eng'r. No.	24627837500
Arch. No.	21AC00912400
Date	01/15/2018
Checked	
Drawn	

KENNETH H. KARLE, R.A.
REGISTERED ARCHITECT
License No. NJ21A00890600

Revisions:

LAN ASSOCIATES
engineering • planning • architecture • surveying
445 GODWIN AVENUE, MIDLAND PARK, N.J. 07432 (201)447-6400

HVAC GROUND FLOOR REMOVALS PLAN
ADDITION TO WOODBRIDGE MIDDLE SCHOOL
WOODBRIDGE BOE
525 BARRON AVENUE
WOODBRIDGE, NJ 07095

Job No. 2.20211.07
File No. -

HR02