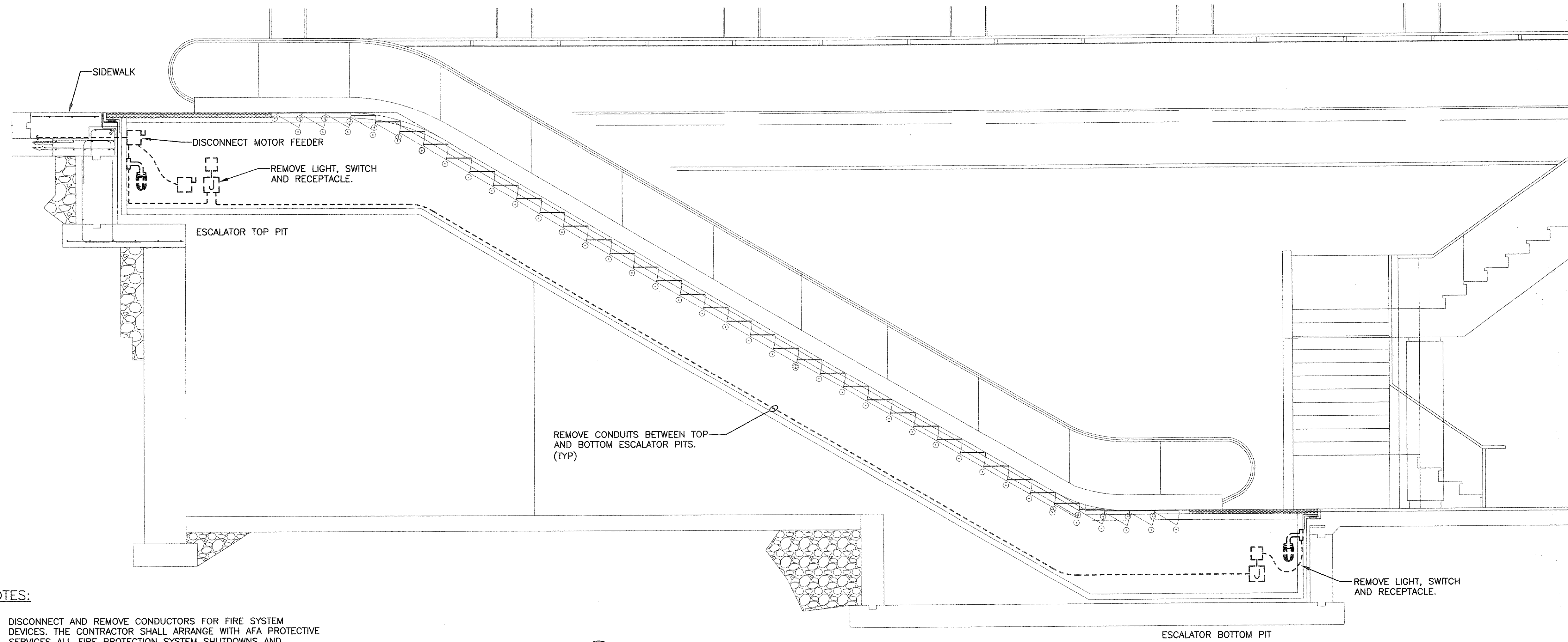
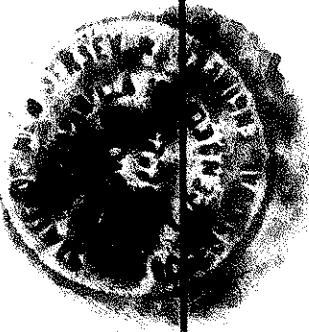




**PORT AUTHORITY**  
TRANS-HUDSON CORPORATION

GANNETT FLEMING, P.C.  
ENGINEERS AND ARCHITECTS

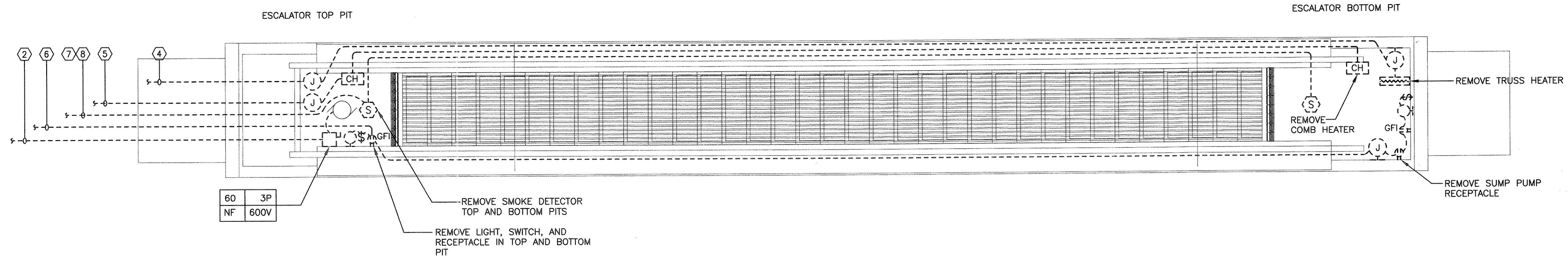
*George R. Campanella*  
GEORGE R. CAMPANELLA  
N.J. Professional Engineer # 24GE04252500



**NOTES:**

1. DISCONNECT AND REMOVE CONDUCTORS FOR FIRE SYSTEM DEVICES. THE CONTRACTOR SHALL ARRANGE WITH AFA PROTECTIVE SERVICES ALL FIRE PROTECTION SYSTEM SHUTDOWNS AND REMOVALS. PLEASE SEE SOLE SOURCE PROVIDER NOTE ON CONTRACT DRAWING E001.(7)(8)
2. DISCONNECT AND REMOVE CONDUCTORS FOR LIGHTING AND RECEPTACLE CIRCUIT. (6)
3. DISCONNECT AND REMOVE CONDUCTORS FOR ESCALATOR CONTROL CIRCUIT AND COMB HEATER. (5)
4. DISCONNECT AND REMOVE FEEDERS FOR ESCALATOR MOTOR AND TRUSS HEATER. ESCALATOR EQUIPMENT ROOM IS LOCATED BELOW ESCALATOR. SEE CONTRACT DRAWING E002 FOR DISTRIBUTION PANEL LOCATION ON BUS LEVEL. (2)(4)
5. FOR CONDUIT REMOVAL DETAILS SEE CONTRACT DRAWING E002.
6. COORDINATE INSTALLATIONS WITH CONRAIL FOR ALL ESCALATORS LOCATED ABOVE TRACK AREAS. EXISTING ESCALATOR INSTALLATIONS DO NOT IMPACT CONRAIL TRACKS.

**E 1**  
E003  
TYPICAL ESCALATOR ELECTRICAL REMOVAL ELEVATION  
SCALE IN FEET



**P 2**  
E003  
TYPICAL ESCALATOR ELECTRICAL REMOVAL PLAN  
SCALE IN FEET

No.	Date	Revision	Approved
<b>ENGINEERING DEPARTMENT</b>			
<b>JOURNAL SQUARE TRANSPORTATION CENTER</b>			

**ELECTRICAL**  
Title  
**BUS TERMINAL ESCALATOR REPLACEMENT**  
**ESCALATOR REMOVAL PLAN AND ELEVATION**

This drawing subject to conditions in contract. All inventions, ideas, designs and methods herein are reserved to Port Authority and may not be used without its written consent.  
All recipients of Contract documents, including bidders and those who do not bid and their prospective subcontractors and suppliers who may receive all or a part of the Contract documents or copies thereof, shall make every effort to ensure the secure and appropriate disposal of the Contract documents to prevent further disclosure of the information contained in the documents. Secure and appropriate disposal includes methods of document destruction such as shredding or arrangements with refuse handlers that ensure that third persons will not have access to the documents' contents either before, during, or after disposal. Documents may also be returned for disposal purposes to the Contract Desk on the 3rd Floor, 3 Gateway Center, Newark, NJ 07102 or the office of the Director of Procurement, One Madison Avenue, 7th Floor, New York NY 10010.

T.GILLEN	A.CONCHADO	G.CAMPANELLA
Designed by	Drawn by	Checked by
Date	11/17/2008	
Contract Number	PAT-214.004	
Drawing Number	<b>E003</b>	
	PID# 07957000	