



**PORT AUTHORITY**  
TRANS-HUDSON CORPORATION

GANNETT FLEMING, P.C.  
ENGINEERS AND ARCHITECTS

*John D. Purdy*  
JOHN D. PURDY

N.J. Professional Engineer # 24GE03967100

No.	Date	Revision	Approved

ENGINEERING DEPARTMENT

**JOURNAL  
SQUARE  
TRANSPORTATION  
CENTER**

MECHANICAL PLUMBING

Title

**BUS TERMINAL  
ESCALATOR REPLACEMENT**

**PLUMBING SYMBOLS,  
ABBREVIATIONS & NOTES**

This drawing subject to conditions in contract. All inventions, ideas, designs and methods herein are reserved to Port Authority and may not be used without its written consent.

All recipients of Contract documents, including bidders and those who do not bid and their prospective subcontractors and suppliers who may receive all or a part of the Contract documents or copies thereof, shall make every effort to ensure the secure and appropriate disposal of the Contract documents to prevent further disclosure of the information contained on the documents. Secure and appropriate disposal includes methods of document destruction such as shredding or arrangements with refuse handlers that ensure that third persons will not have access to the documents' contents either before, during, or after disposal. Documents may also be returned for disposal purposes to the Contract Desk on the 3rd Floor, 3 Gateway Center, Newark NJ 07102 or the office of the Director of Procurement, One Hudson Avenue, 7th Floor, New York, NY 10010.

S. ALI S. ALI R. CLASSI  
Designed by Drawn by Checked by

Date 11/17/2008

Contract Number PAT-214.004

Drawing Number **P001**  
PID# 07957000

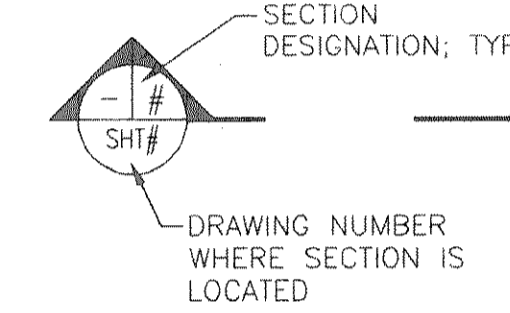
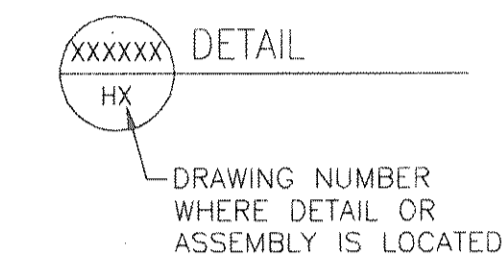
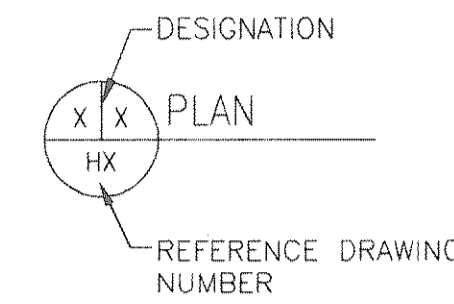
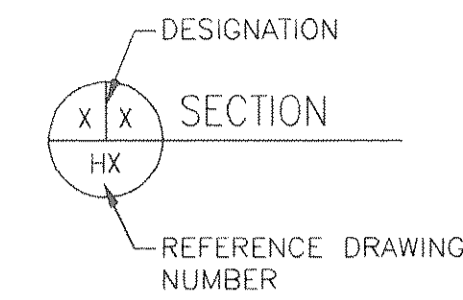
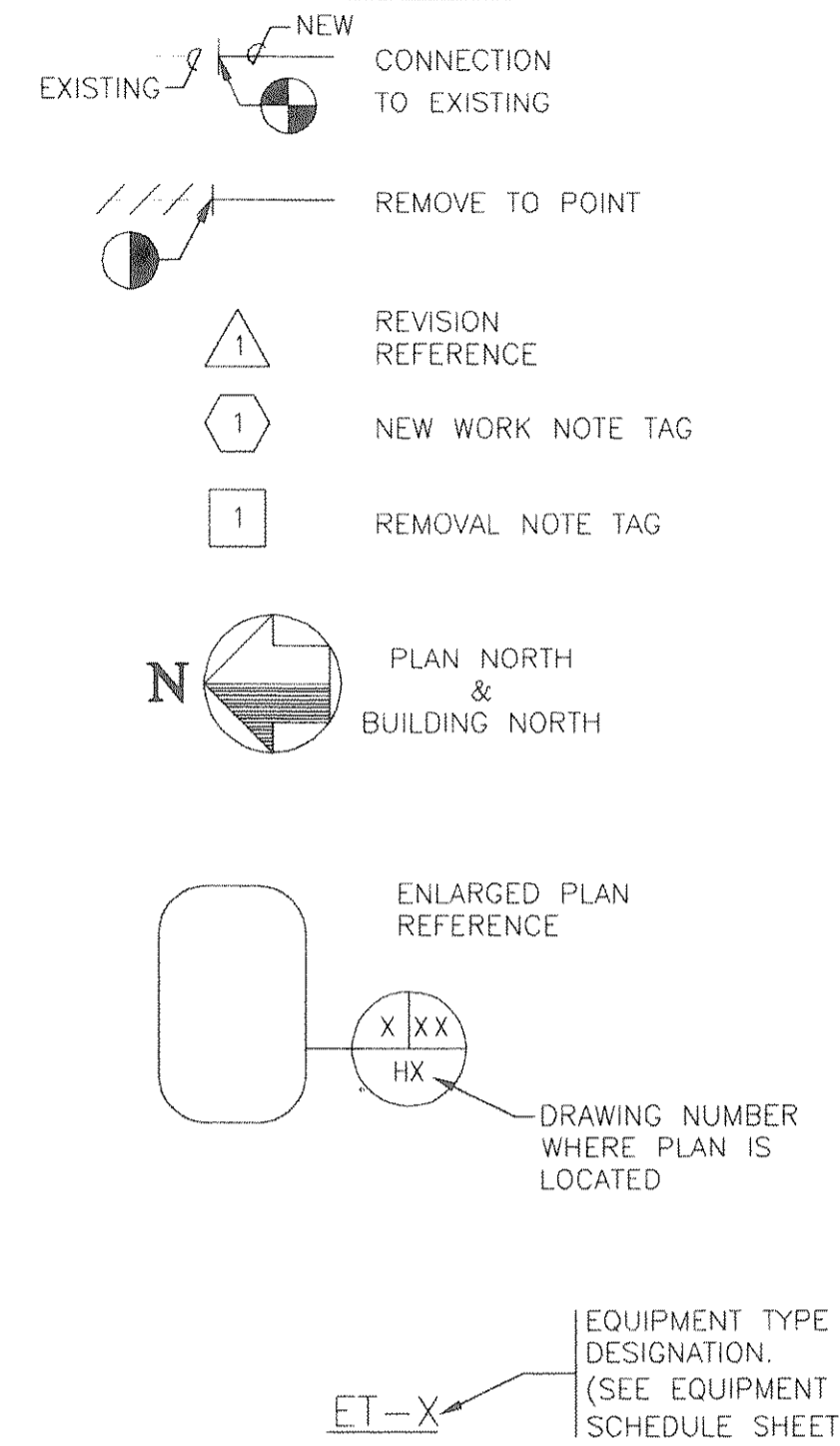
**ABBREVIATIONS**

APPROX APPROXIMATE	GALV. GALVANIZED
AUTO AUTOMATIC	GC GENERAL CONTRACTOR
AVG AVERAGE	GPM GALLONS PER MINUTE
BTU BRITISH THERMAL UNITS	GRD GROUND
CFM CUBIC FEET PER MINUTE	HORIZ HORIZONTAL
CONC CONCRETE	HP HEAT PUMP/ HORSEPOWER
CONN CONNECTION	MFR MANUFACTURER
DIA DIAMETER	MIN MINIMUM
DN DOWN	N/A NOT APPLICABLE
DWG DRAWING	NTS NOT TO SCALE
EA EXHAUST AIR	NPT NATIONAL PIPE THREAD
EAT ENTERING AIR TEMPERATURE	PKG. PACKAGE
EDB ENTERING DRY BULB TEMPERATURE	PVC POLYVINYL CHLORIDE
EL ELEVATION	RPM REVOLUTIONS PER MINUTE
EXIST EXISTING	SAN SANITARY
FLR FLOOR	SP-# SUMP PUMP DESIGNATION
FPM FEET PER MINUTE	SPEC SPECIFICATION
FT FEET	SS STAINLESS STEEL
	TDH TOTAL DYNAMIC HEAD
	TYP TYPICAL
	UL UNDERWRITERS LABORATORY

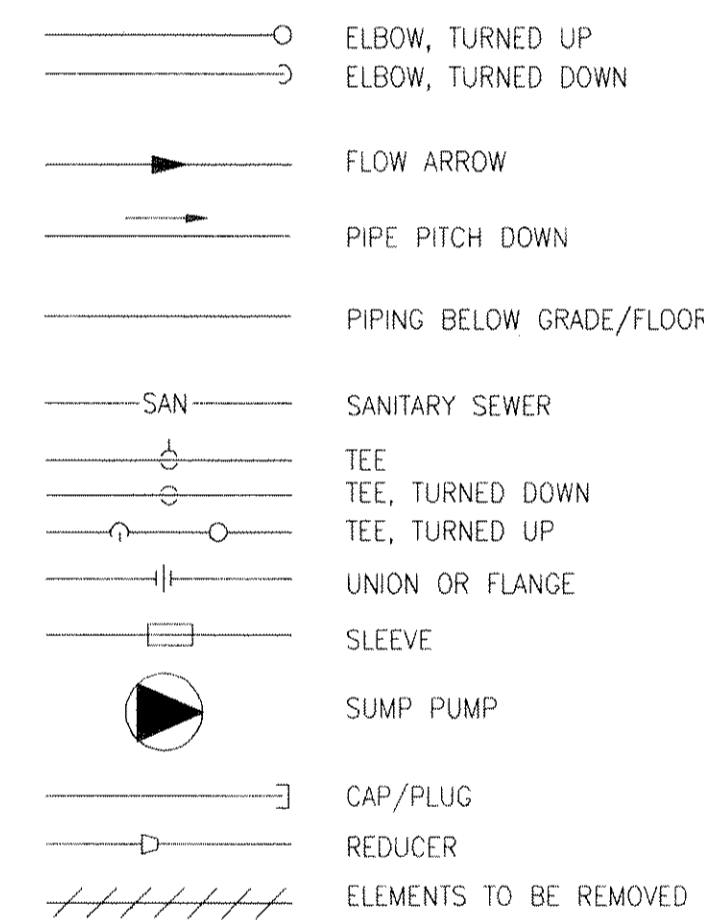
**PLUMBING SYMBOLS**

X	GATE VALVE
⊗	GLOBE VALVE
⊙	BALL VALVE
⊥	CHECK VALVE

**PLUMBING LEGEND**



**PIPING**



**GENERAL NOTES FOR PLUMBING WORK**

- CHECK AND VERIFY ALL DIMENSIONS AND EXISTING CONDITIONS AT THE SITE DURING CONSTRUCTION.
- INSTALL ALL EQUIPMENT AND MATERIALS IN STRICT ACCORDANCE WITH RESPECTIVE MANUFACTURER'S WRITTEN INSTRUCTIONS.
- ALL DIMENSIONS AND PIPE SIZES ARE IN INCHES, UNLESS NOTED OTHERWISE.
- INSTALL ALL WORK IN ACCORDANCE WITH ALL CODES AND REGULATIONS THAT WOULD APPLY IF PATH WERE A PRIVATE CORPORATION.
- OPENINGS FOR PENETRATIONS SHALL INCLUDE OPENINGS REQUIRED IN SLABS AND WALLS. CORE DRILL HOLES IN FLOORS AND WALLS TO ACCOMMODATE PIPE SLEEVES FOR THE PASSAGE OF PIPES. HOLE TOLERANCES SHALL MEET REQUIREMENTS OF SLEEVE MANUFACTURER.
- PROVIDE SLEEVES AS APPROVED BY THE ENGINEER, FOR ALL PIPES PASSING THROUGH WALLS AND FLOOR SLABS.
- PROVIDE PIPE SUPPORTS AND HANGERS TO SUPPORT PIPES, EQUIPMENT AND ACCESSORIES INDEPENDENTLY FROM THE STRUCTURE. CONTRACTOR SHALL PROVIDE REQUIRED SUPPLEMENT STEEL TO ACCOMPLISH A SAFE AND SOUND INSTALLATION.