

No.	Date	Revision	Approved

ENGINEERING DEPARTMENT

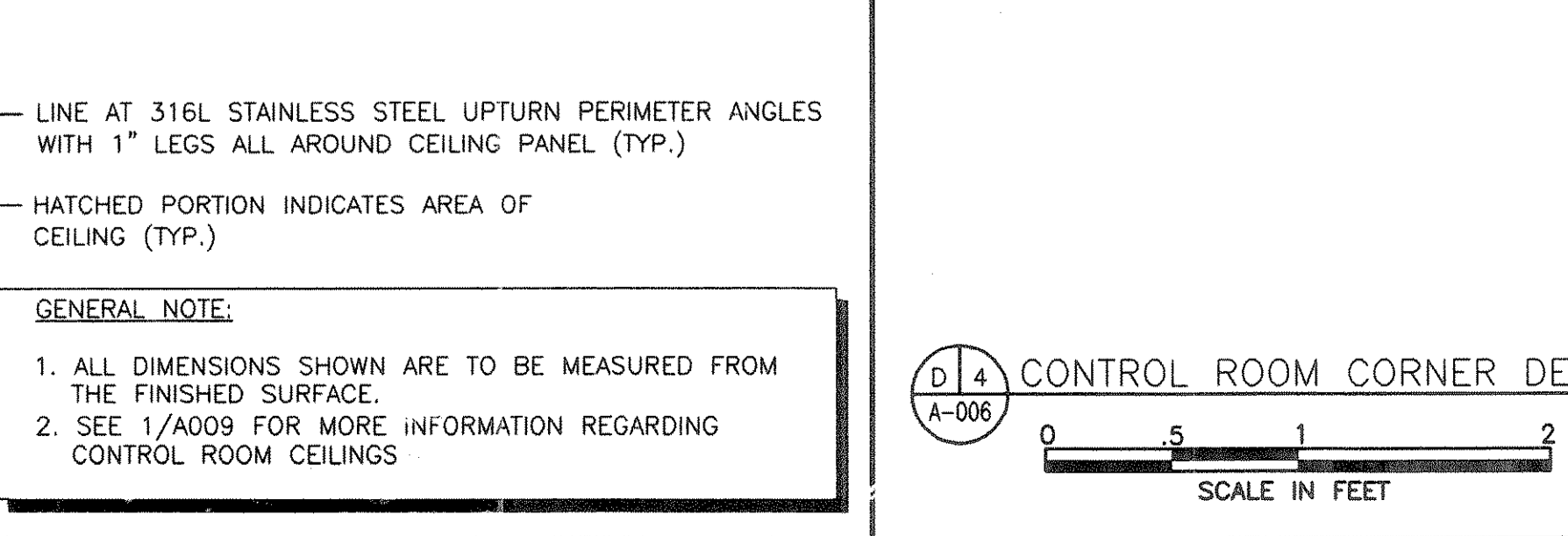
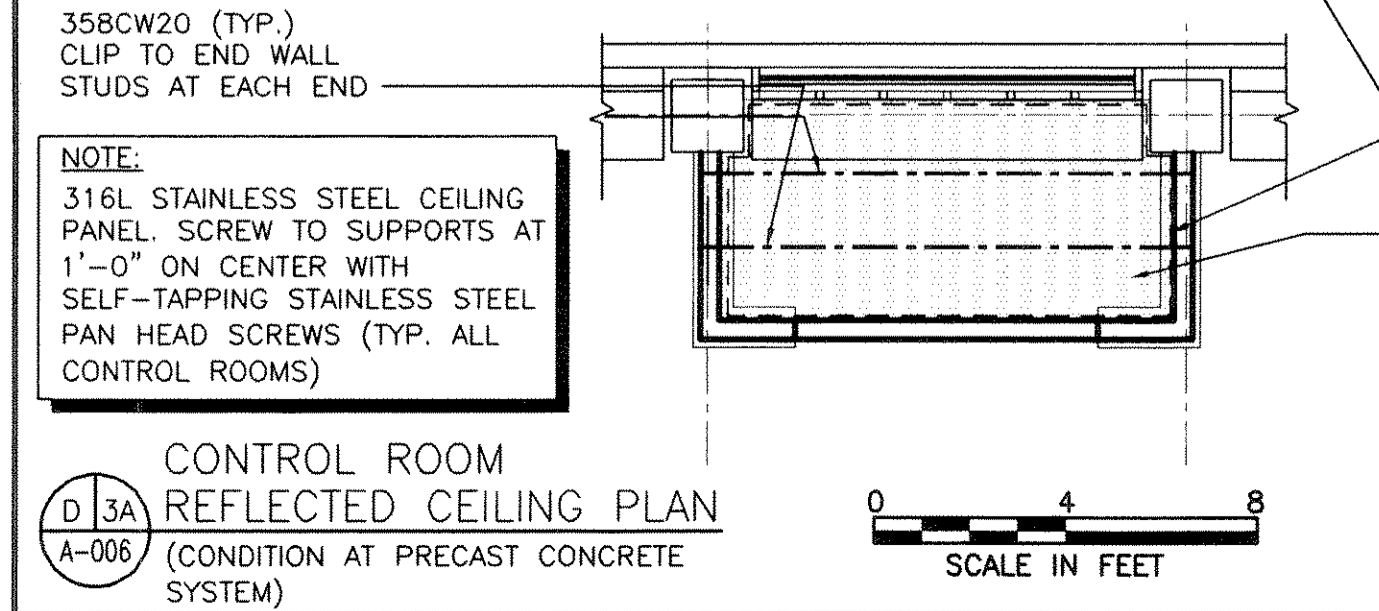
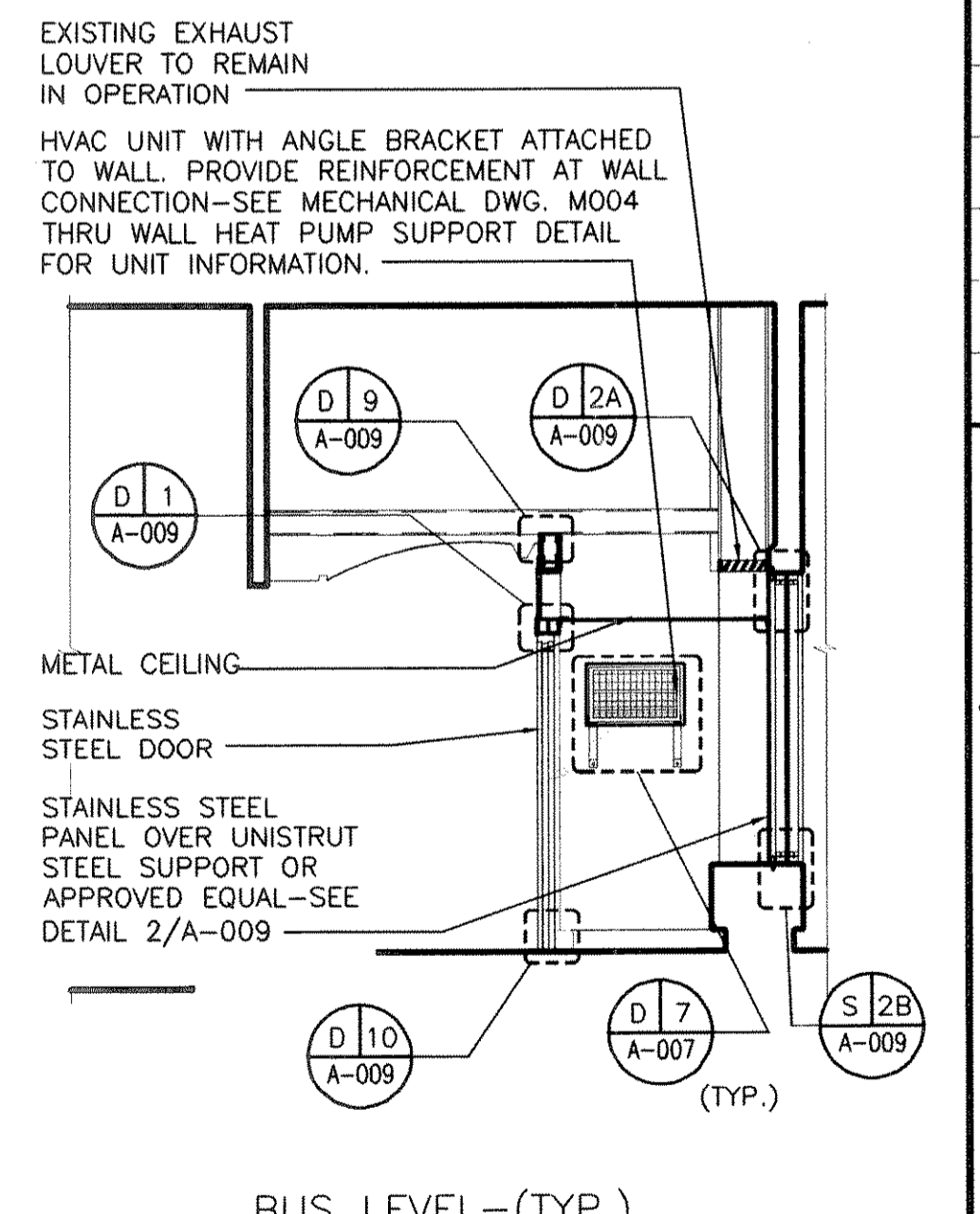
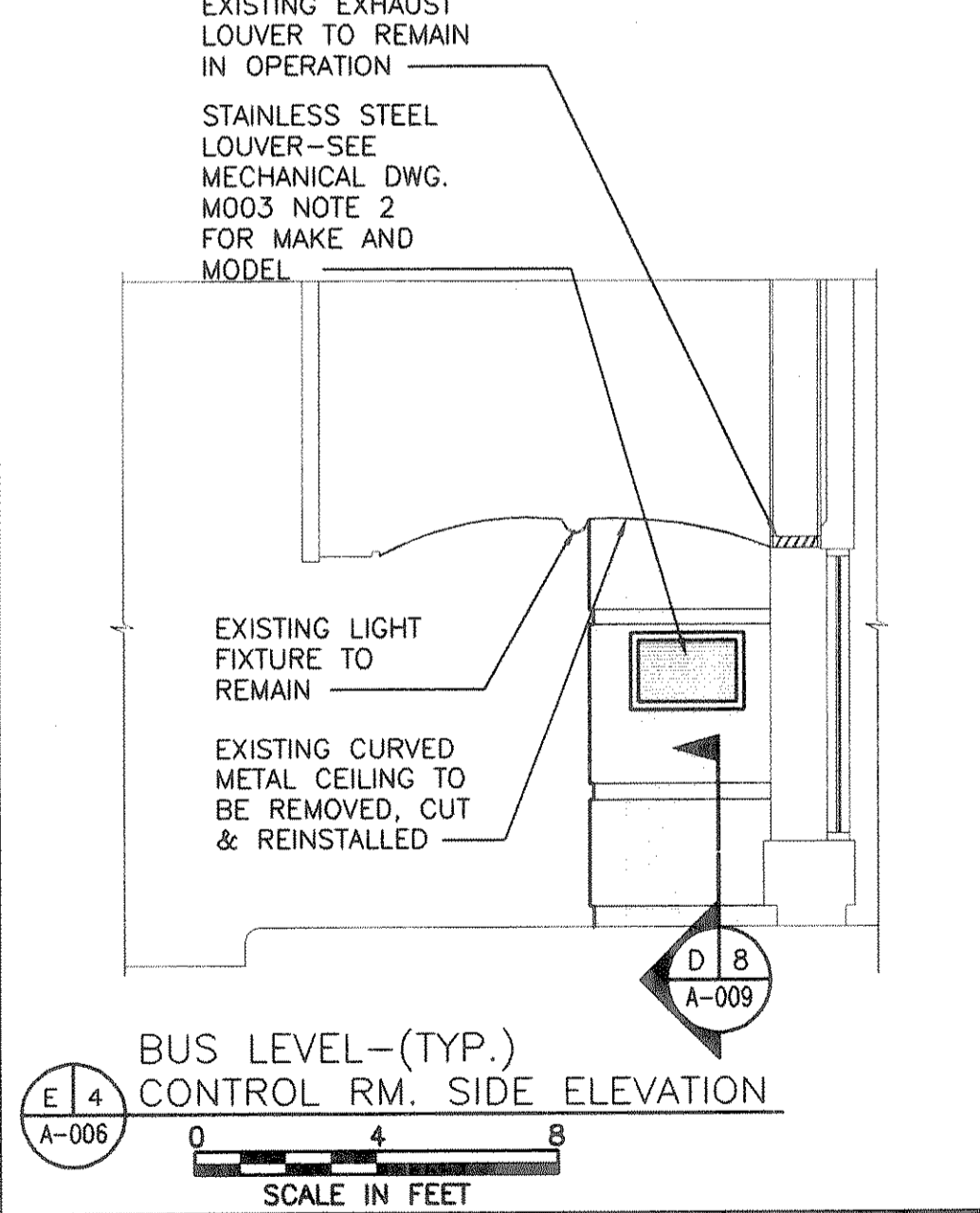
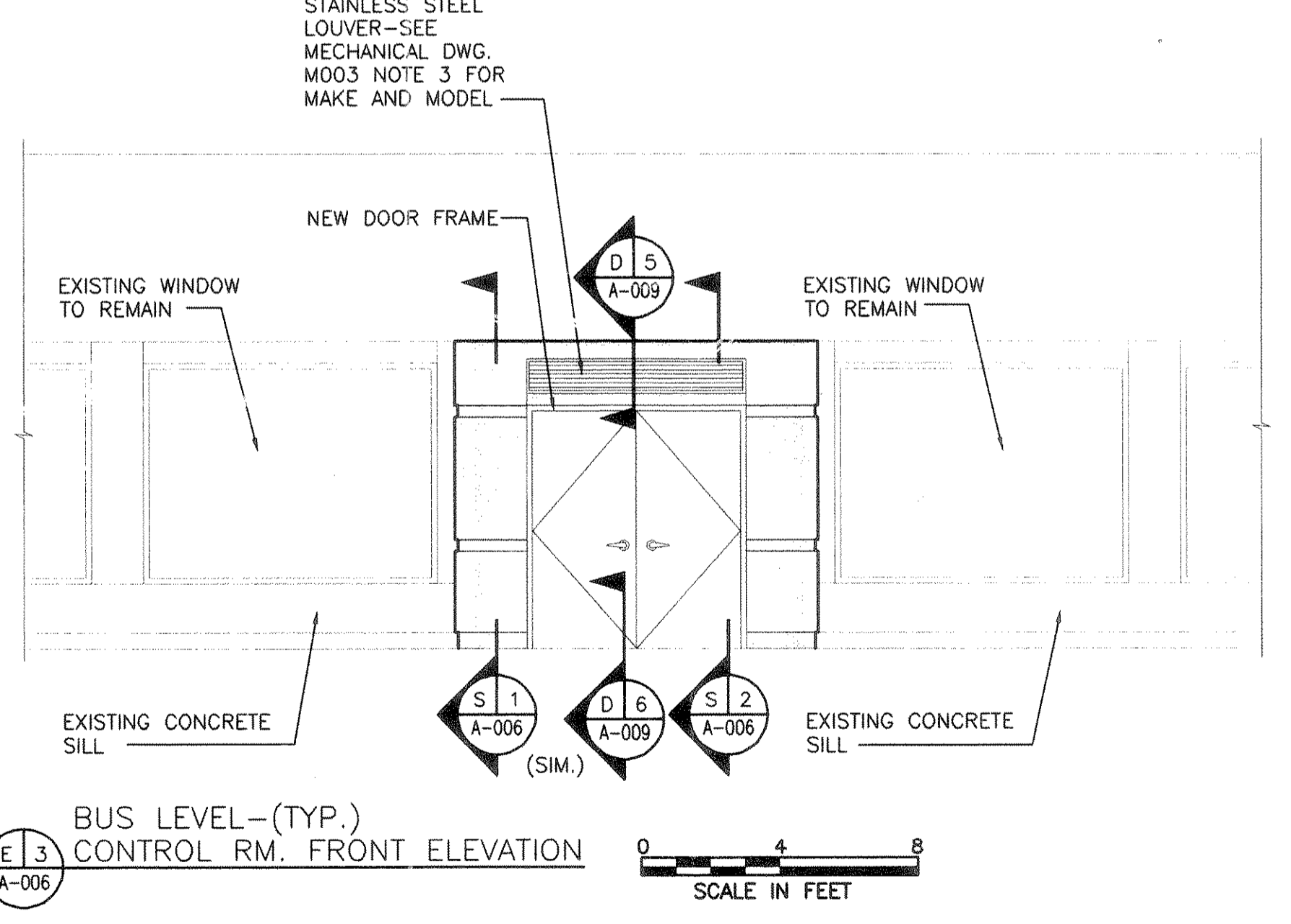
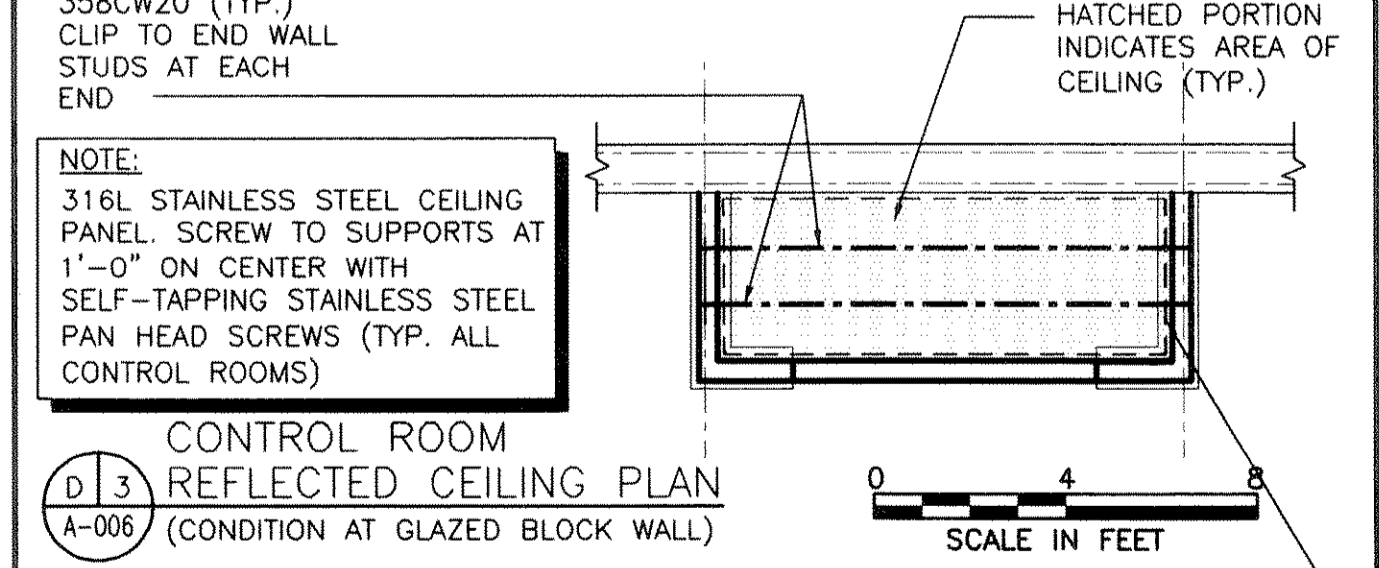
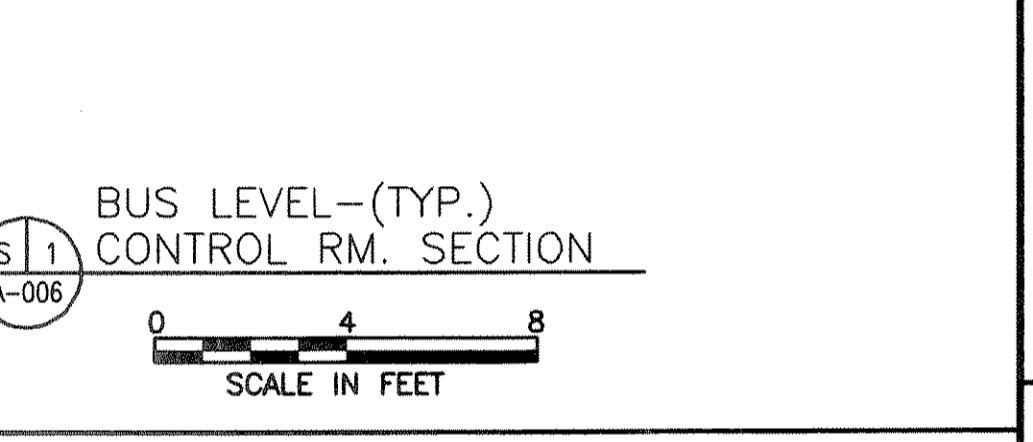
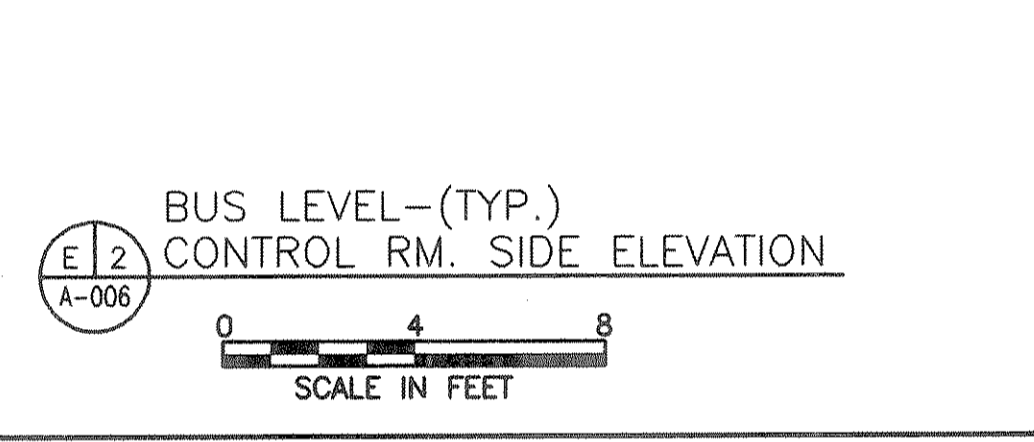
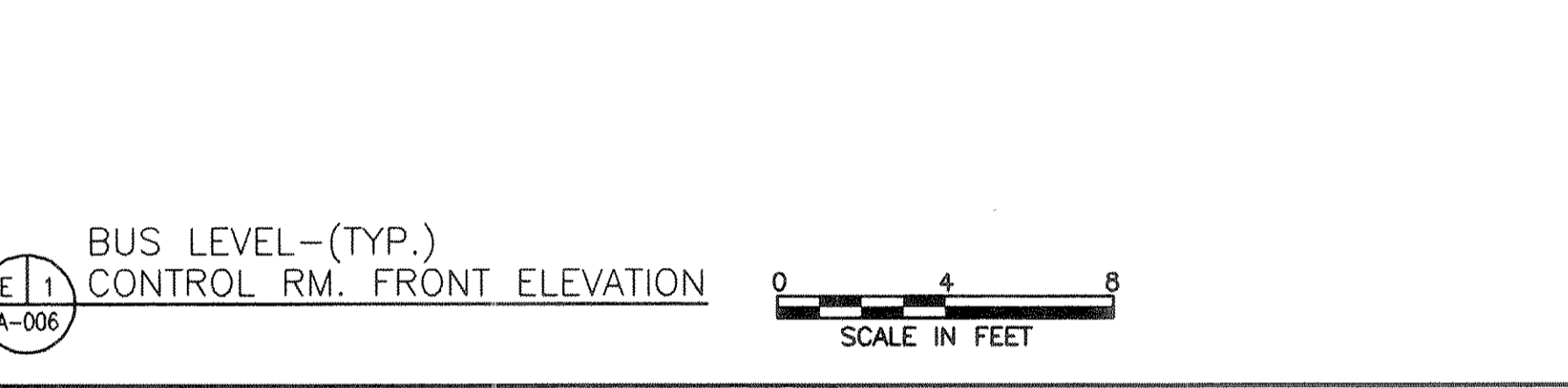
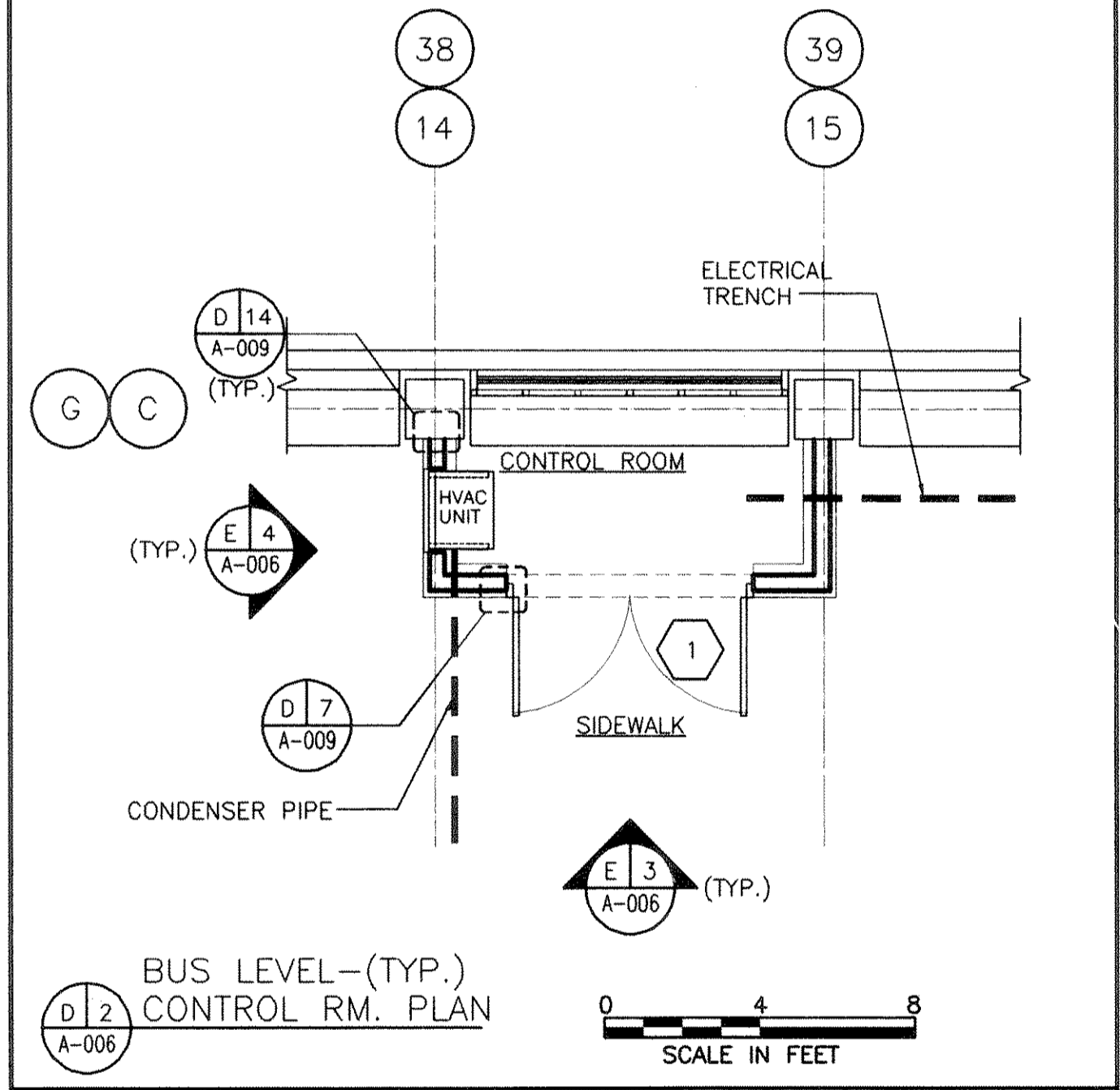
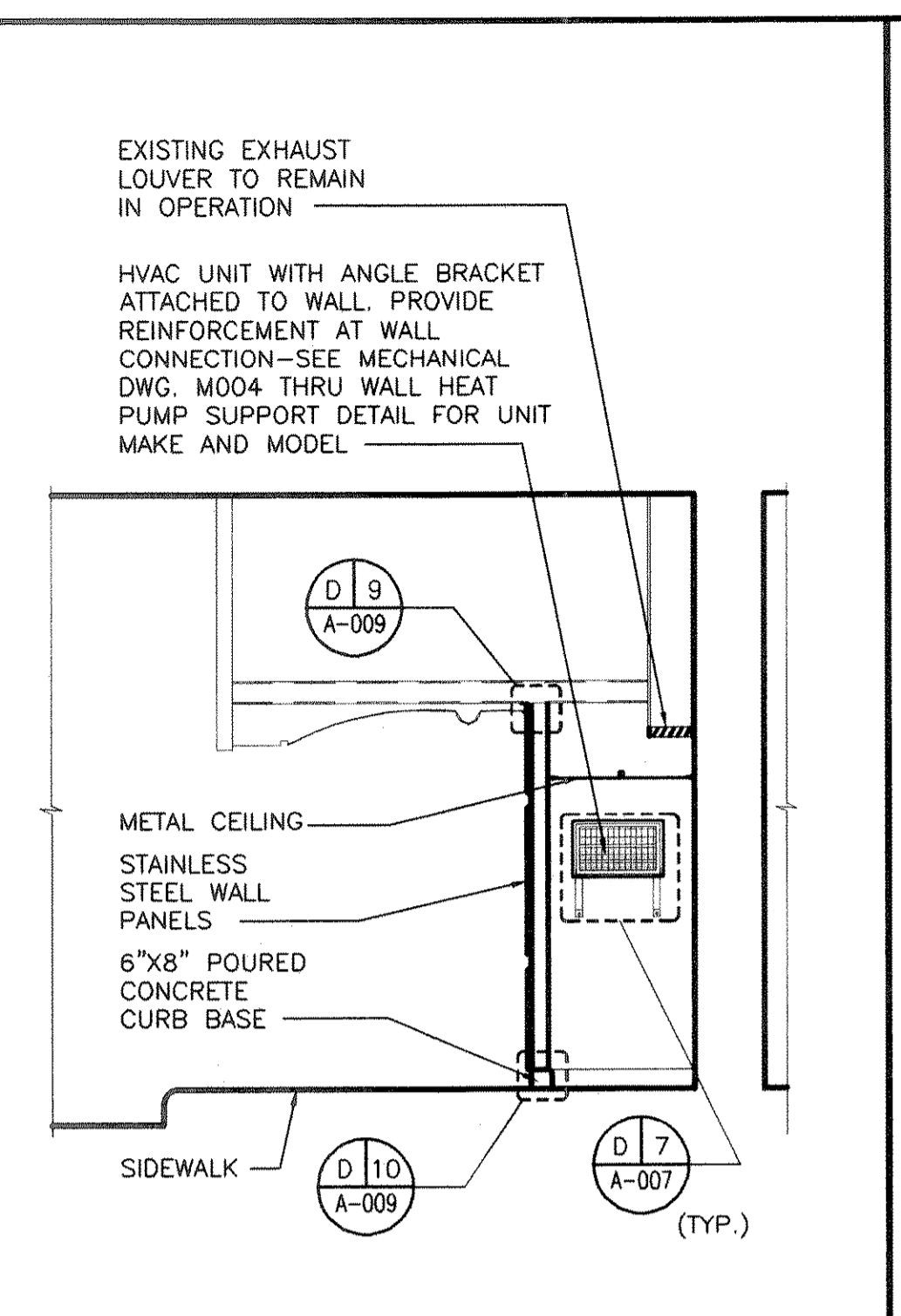
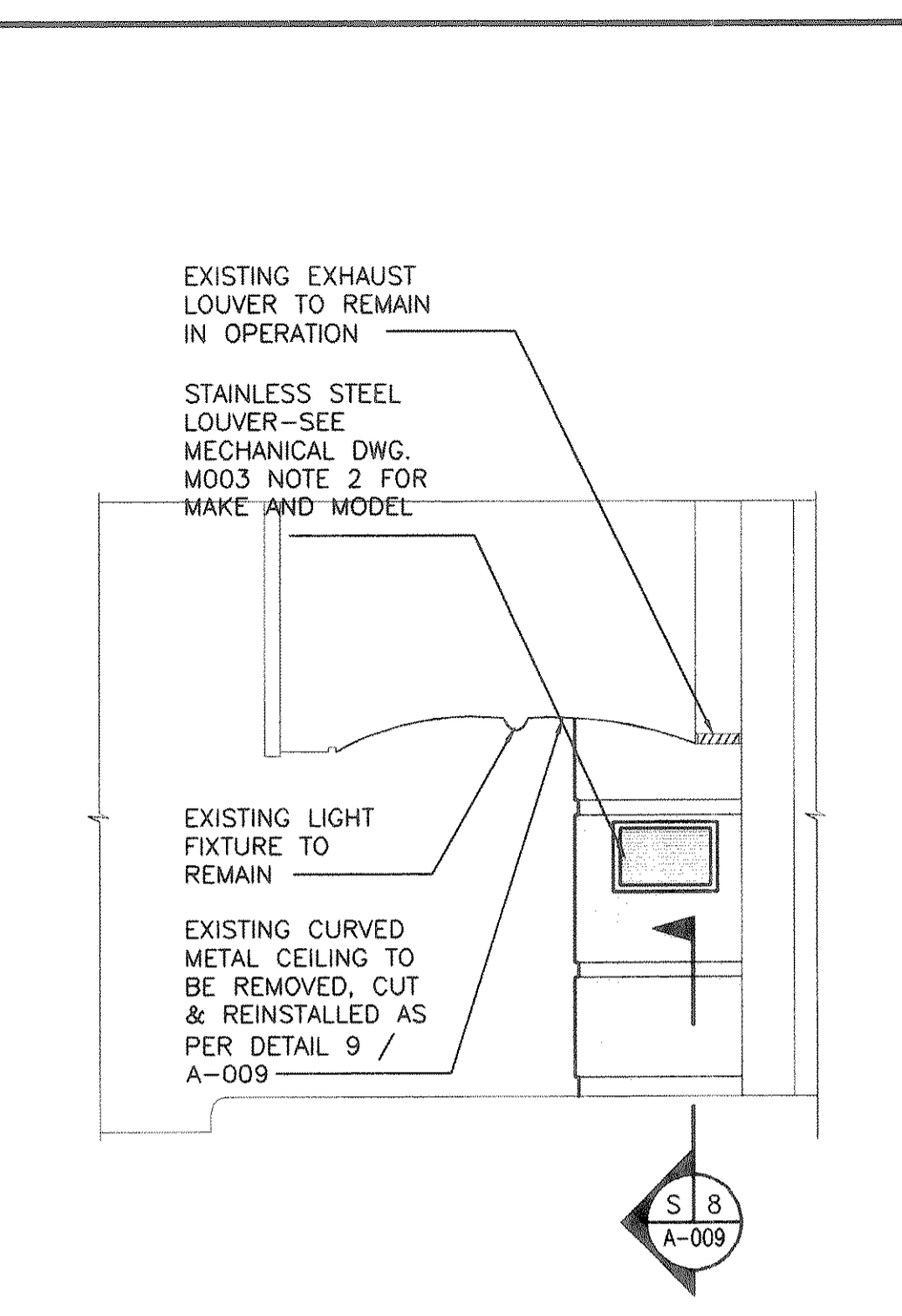
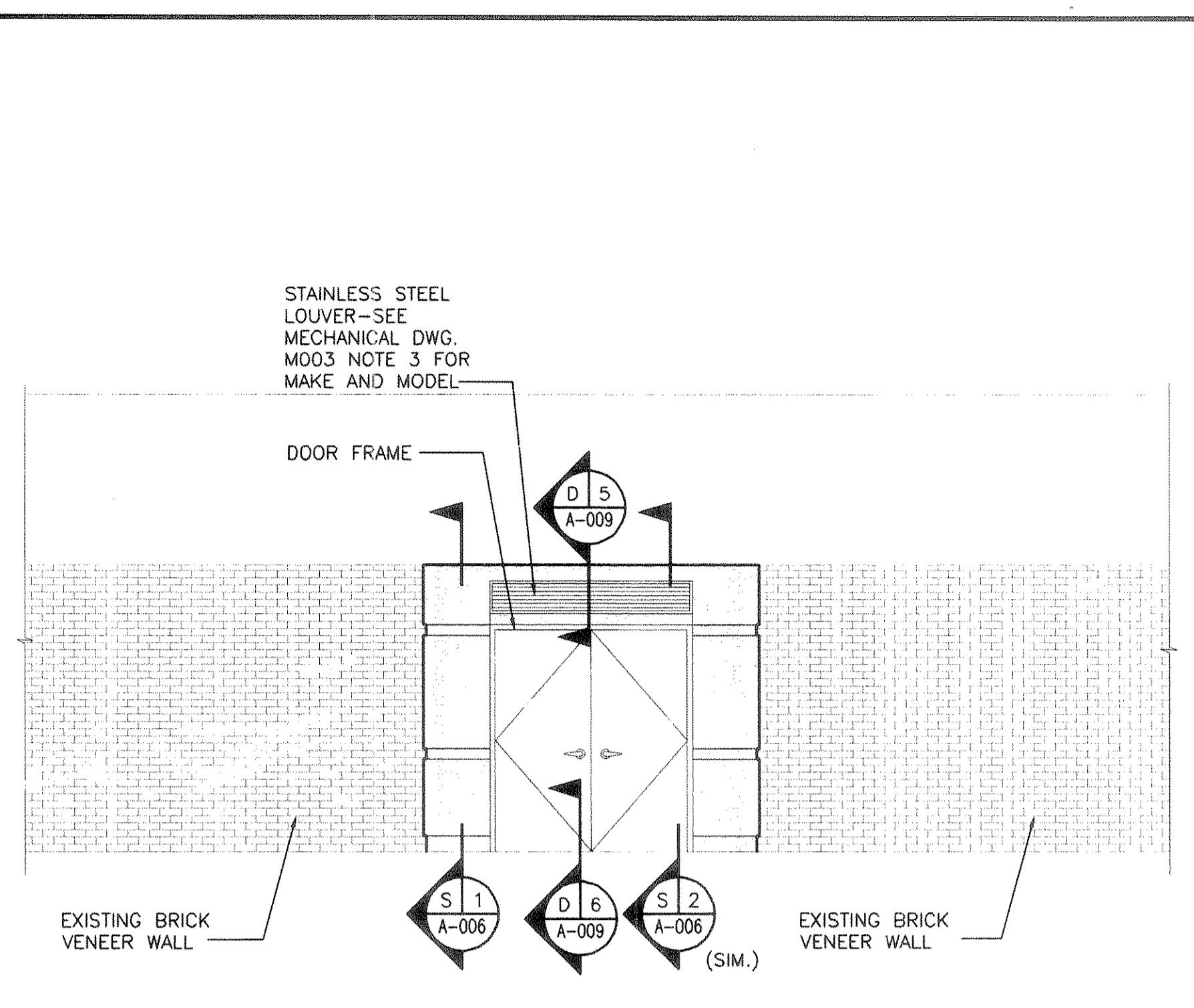
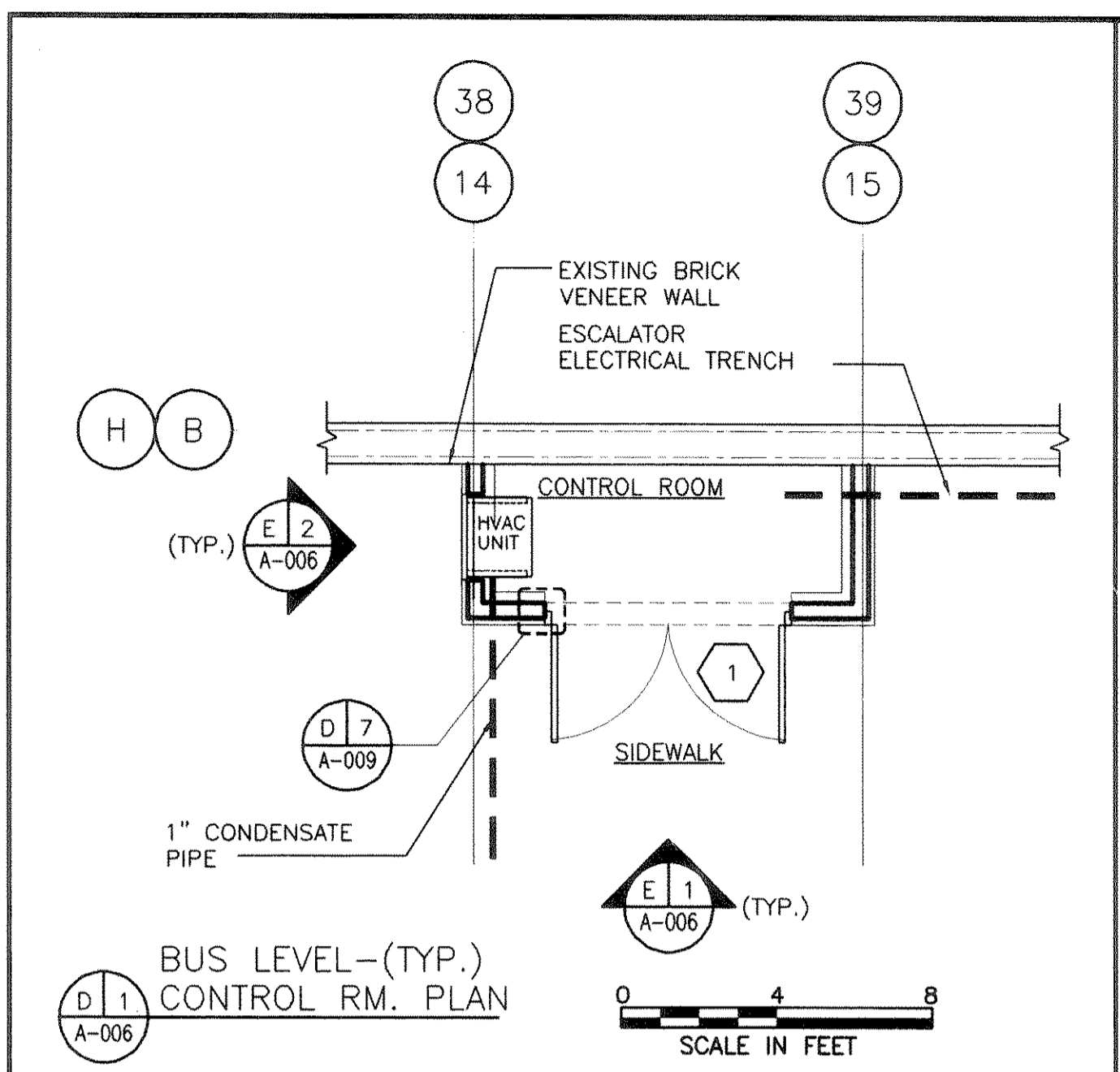
**JOURNAL SQUARE TRANSPORTATION CENTER**

ARCHITECTURE  
Title  
**BUS TERMINAL ESCALATOR REPLACEMENT**

**TYPICAL CONTROL ROOM PLANS, ELEVATIONS, SECTIONS**

This drawing subject to conditions in contract. All inventions, ideas, designs and methods herein are reserved to Port Authority and may not be used without its written consent.  
All recipients of Contract documents, including bidders and those who do not bid and their prospective subcontractors and suppliers who may receive all or a part of the Contract documents or copies thereof, shall make every effort to ensure the secure and appropriate disposal of the Contract documents to prevent further disclosure of the information contained on the documents. Secure and appropriate disposal includes methods of document destruction such as shredding or arrangements with reliable handlers that ensure that third parties will not have access to the documents' contents either before, during, or after disposal. Documents may only be returned for disposal purposes to the Contract Desk on the 3rd Floor, 3 Gateway Center, Newark, NJ 07102 or the office of the Director of Procurement, One Madison Avenue, 7th Floor, New York, NY 10010.

**R. GOMES**    **R. GOMES**    **T. KISPERT**  
Designed by    Drawn by    Checked by  
Date    11/17/2008  
Contract Number    **PAT-214.004**  
Drawing Number    **A006**  
PID# 07957000



**GENERAL NOTE:**  
1. ALL DIMENSIONS SHOWN ARE TO BE MEASURED FROM THE FINISHED SURFACE.  
2. SEE 1/A009 FOR MORE INFORMATION REGARDING CONTROL ROOM CEILINGS