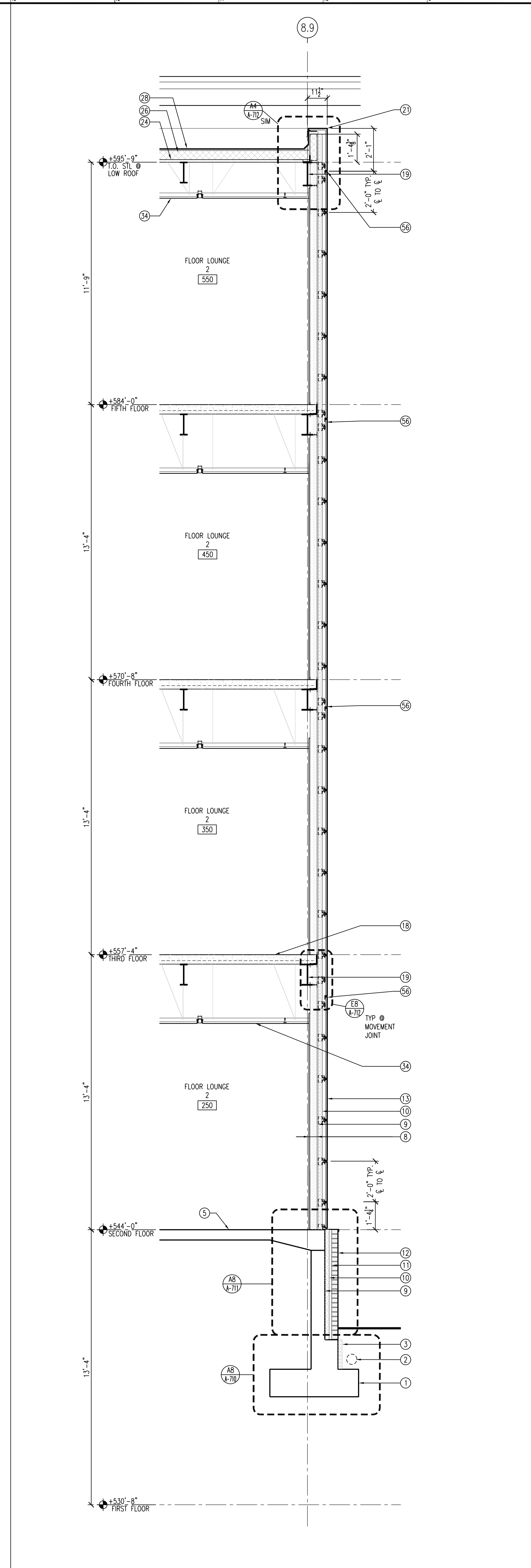
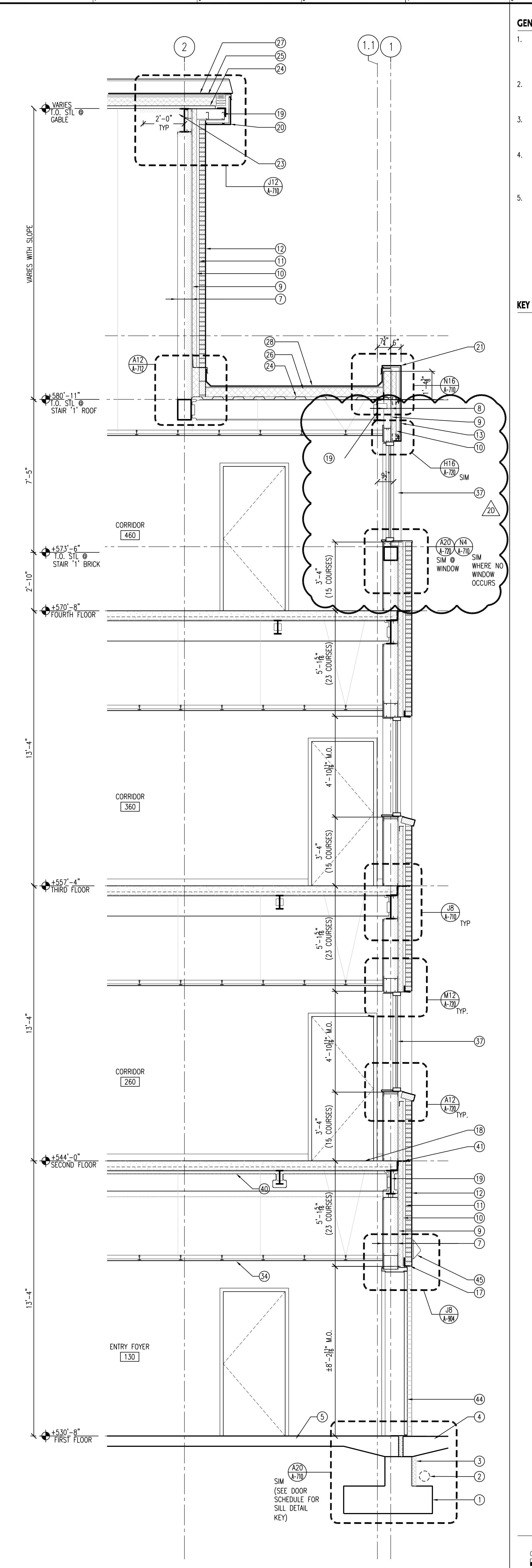


A20 WALL SECTION @ STAIR '2' ROOF & EXPANSION JOINT SCALE: 3/8" = 1'-0"



A13 WALL SECTION @ FLOOR LOUNGE 2 SCALE: 3/8" = 1'-0"



A8 WALL SECTION @ SOUTH END OF CORRIDOR SCALE: 3/8" = 1'-0"

- GENERAL NOTES - WALL SECTIONS**
1. GRADING DIMENSIONS ARE GIVEN TO CENTERLINE OF STEEL COLUMNS. THE DIMENSIONS ARE TO BE V.I.F. AFTER ERECTION OF STEEL WITH DISCREPANCIES NOTED AND PROVIDED TO THE ARCHITECT AND OWNER/ OWNERS REPRESENTATIVE.
 2. KEYNOTES ARE PROVIDED AT A MAXIMUM OF (1) OCCURRENCE OF A CONDITION WITHIN A DETAIL AND SHALL APPLY TO ALL SIMILAR OCCURRENCES WHETHER MARKED AS TYPICAL OR NOT.
 3. ENLARGED DETAIL CALLOUTS ARE PROVIDED AT (1) OCCURRENCE OF A CONDITION WITHIN A DETAIL AND SHALL APPLY TO ALL SIMILAR OCCURRENCES WHETHER OR NOT MARKED TYPICAL.
 4. FOOTINGS, FOUNDATION STEEL WALLS, AND BRICK SHELVES SHOWN ON ARCHITECTURAL DRAWINGS ARE FOR GRAPHIC REPRESENTATION & COORDINATION. SEE STRUCTURAL DRAWINGS FOR SIZES, SHAPE, AND REINFORCING.
 5. BRICK SHELF ELEVATIONS ARE PROVIDED ON STRUCTURAL DRAWINGS FOR REFERENCE. FINAL ELEVATIONS ARE TO BE COORDINATED WITH AS-BUILT GRADING CONDITIONS TO PROVIDE MINIMUM 8" COVER. EXPOSED FOUNDATION WALLS OR BRICK SHELVES ARE NOT ACCEPTABLE.

- KEY NOTES - WALL SECTIONS**
1. POURED IN PLACE CONCRETE FOOTING AND FOUNDATION WALL.
 2. GEOTEXTILE FABRIC WRAPPED PERFORATED PIPE FOOTING DRAIN. SEE CIVIL DWGS.
 3. DRAINAGE BOARD OVER RIGID INSULATION AND FOUNDATION WATERPROOFING.
 4. ASPHALTIC CONC PAVING/CONC SIDEWALK. SEE CIVIL AND SITE PLAN DWGS.
 5. CONCRETE SLAB OVER GRADE W/ CLASS 1 VAPOR BARRIER.
 6. DASHED LINE OF EXISTING GRADE.
 7. 8" METAL STUD AT 16" O.C. WITH 2 1/2" SPRAY INSUL AND 5/8" MOISTURE RESISTANCE GWB INTERIOR FINISH WITH GLASS FACE ON (1) SIDE FACING WALL CAVITY.
 8. 4" METAL STUD AT 16" O.C. WITH 2 1/2" SPRAY INSUL AND 5/8" MOISTURE RESISTANCE GWB INTERIOR FINISH WITH GLASS FACE ON (1) SIDE FACING WALL CAVITY.
 9. 5/8" GYPSUM SHEATHING W/ SELF-ADHERING WEATHER RESISTIVE MEMBRANE. USE HIGH TEMP. WHEN DIRECTLY UNDER MTL. PANELS. TYP.
 10. 2-1/2" FOIL FACED POLY-ISO RIGID INSULATION.
 11. 1-1/2" AIR GAP.
 12. BRICK VENEER CLADDING ON THERMALLY BROKEN ST. STL. ADJUSTABLE CLIPS SEE A4/A-710 FOR TYPICAL ASSEMBLY NOTES.
 13. PRE-FINISHED, ROUTE & RETURNED METAL COMPOSITE PANEL INSTALLED AS A RAIN SCREEN. SEE E4/A7-10 FOR TYPICAL ASSEMBLY NOTES.
 14. ARCHITECTURAL ALUMINUM WINDOW ASSEMBLY WITH CUSTOM DEEP EXTENSION HEAD/JAMB RECEPTOR AND CUSTOM SUBSILL. GLAZING TO BE INSULATED WITH LOW-E COATING. WHERE INDICATED, PROVIDE ANNING TYPE OPERABLE VENT & WINDOW SCREEN. PROVIDE 4" LUMBER AT ALL VENTS. TYP.
 15. PRE-FINISHED ALUMINUM SUNSHADE W/ BRACKETS TO ATTACH TO CURTAINWALL.
 16. 8" HIGH PRE-CAST STONE HORIZONTAL BAND.
 17. LOOSE STEEL LINTEL AT WINDOW & DOOR HEAD. TYP.
 18. CONC FILLED GALV. METAL DECKING. SEE STRUCT. DWGS.
 19. STRUCT. STL FRAMING. SEE STRUCT. DWGS.
 20. PRE-FINISHED COMPOSITE ALUMINUM PANEL FASCIA AND SOFFIT.
 21. PRE-FINISHED COMPOSITE ALUMINUM PANEL COPING.
 22. 22 GAUGE MIN ALUMINUM GUTTER AND DOWNSPOUTS. PROVIDE HEAT TRACE IN GUTTERS AND EXTEND FULL LENGTH OF DOWNSPOUTS.
 23. 2-1/2" SPRAY INSULATION TO COVER SPANDREL BEAM AND EXTEND INWARD 2FT MIN FROM EXTERIOR AT ALL PROJECTING ROOF CONDITIONS.
 24. GALV. METAL DECKING. SEE STRUCT. DWGS.
 25. NONABLE VENTED POLY-ISO ROOF INSULATION WITH 1/2" FRT TREATED OSB. 1" VENT SPACER STRIPS. LAYER OVER POLY-ISO INSULATION THICKNESS AS REQ'D FOR TOTAL LTR = R-30 MIN.
 26. POLY-ISO RIGID INSULATION (R-30 MIN.) MECHANICALLY FASTENED, SLOPED TO DRAIN IN 2 LAYERS WITH JOINTS STAGGERED (APPROX. 5-1/4") & ROOF CRACKS AS REQUIRED.
 27. ASPHALT SHINGLES OVER SELF ADHERING WEATHER RESISTIVE UNDERLAYMENT W/ VENTED ROOF CAP.
 28. SBS MODIFIED BITUMEN ROOFING MEMBRANE OVER 1/2" GFR. GYPSUM PROTECTION BOARD.
 29. STANDING SEAM METAL ROOFING OVER 1/2" GFR. GYPSUM PROTECTION BOARD W/ SELF ADHERING HIGH-TEMP UNDERLAYMENT.
 30. STEEL ROOF FRAMING WITH MAIN MEMBERS. SEE STRUCT. DWGS.
 31. MECHANICAL DUCTWORK MAIN HORIZONTAL DISTRIBUTION. SEE MECH DWGS.
 32. SOLID SURFACE WINDOW SILL. TYP.
 33. MANUAL SOLAR SHADE IN PRE-FINISHED HOUSING. SEE FINISH SCHEDULE FOR MATERIAL & COLOR.
 34. INTERIOR CEILING FINISH. SEE FINISH SCHEDULE.
 35. STEEL FRAMED METAL PAN STAIR. SEE STAIR DETAILS ON A-701, A-702 AND A-703.
 36. ALUMINUM FRAMED CURTAINWALL ASSEMBLY & INSULATED GLAZING UNITS WITH LOW-E COATING. WHERE INDICATED.
 37. STOREFRONT WINDOW ASSEMBLY & INSULATED GLAZING WITH LOW-E COATING. WHERE INDICATED.
 38. STEEL FRAMED CANOPY CLAD WITH ALUMINUM COMPOSITE PANEL SYSTEM ON METAL STUDS, GYPSUM SHEATHING AND HIGH-TEMP SELF-ADHERED WATERPROOF MEMBRANE.
 39. ALUMINUM TUBE TRELLIS. PAINTED WITH HIGH PERFORMANCE COATING.
 40. SPRAY ON FIRE PROOFING AT STL. AND DECKING; LS110 AND LS111 FOR EXTENT AND LOCATIONS.
 41. CONTINUOUS SHELF ANGLE AT FLOOR SLAB. TYP.
 42. UTILITY METAL PANEL ASSEMBLY ON MTL. FURRING WITH EXPOSED FASTENERS. FINISH TO MATCH FASCIA/SOFFIT COLOR. SEE DETAIL J4/A-710.
 43. PARAPET MOUNTED OSHA COMPLIANT ALUMINUM GUARDRAIL.
 44. PTD GALV. METAL HOLLOW METAL DOOR AND FRAME.
 45. LIGHT FIXTURE. SEE ELEVATIONS, ELEC DRAWINGS, AND RCPs FOR TYPE.
 46. FIRE-RATED CMU SHAFT. SEE PLANS FOR PARTITION TYPES & STRUCT. DWGS.
 47. FIRE STOP JOINT TO MAINTAIN SAME RATING AS FLOOR. TYP.
 48. GWB ON METAL STUD INTERIOR PARTITION. SEE PLANS FOR TYPE.
 49. RECESSED CONC. SLAB AND ROLL-UP WALKOFF MAT. SEE PLAN FOR EXTENT.
 50. CONCRETE ELEVATOR PIT FOUNDATION WALL AND FOOTING WITH SURFACE APPLIED CRYSTALLINE WATERPROOFING APPLIED TO ALL SURFACES. SUMP PIT BEYOND SHOWN DASHED.
 51. CONCRETE BLOCK SHAFTWALL WITH GWB FURRING AS SCHEDULED. SEE PLANS.
 52. ELECTRIC TRACTION ELEVATOR (SHOWN DASHED). SEE SPECIFICATION.
 53. ELEVATOR SHAFT DOOR OPENING WITH METAL SILL PLATE WITH SUPPORT ANGLE & METAL JAMB RETURNS.
 54. ELEVATOR HOISTWAY BEAM. SEE STRUCTURAL DWGS AND ELEVATOR SPEC. C.C. TO VERIFY REQUIREMENTS WITH SELECTED ELEVATOR MAKE.
 55. STANDPIPE AND FD. CONNECTION; SEE FP DRAWINGS.
 56. MOVEMENT JOINT AT FLOOR LEVEL; TYPICAL.

GRAPHIC SCALE: 3/8" = 1'-0"

Clarke Catton Hintz
 Architecture
 Landscape Architecture
 100 Barack Street, Trenton, NJ 08638
 Tel: (609) 838-8383; Fax: (609) 833-0044
 www.clarkecattonhintz.com
 Drawing Copyright ©2018 Clarke Catton Hintz, PC

OWNER:
 WILLIAM PATTERSON UNIVERSITY
 300 POMPTON RD.
 WAYNE, NJ 07470
 (973) 729-2000

SITE / CIVIL / GEOTECHNICAL:
 LANGAN
 300 KIMBALL DRIVE
 PARLISHPARK, NJ 07054
 (973) 560-4900

STRUCTURAL:
 HARRISON & HAMNETT
 40 KNOWLES STREET
 PENNINGTON, NJ 08634
 (609) 818-1808

MECHANICAL/ELECTRICAL/PLUMBING:
 FIRE PROTECTION
 PARTNER ENGINEERING AND SCIENCE, INC.
 611 INDUSTRIAL WAY WEST
 EASTONTOWN, NJ 07724
 (732) 389-1700

AV/IT & SECURITY:
 R.G. VANDERWEIL ENGINEERS, LLP
 101 GROVERS MILL ROAD
 QUAKERTOWN EXECUTIVE CENTER
 LAWRENCEVILLE, NJ 08848
 (609) 609.786.2727

| SUBMISSIONS | |
|-------------|----------------------------------|
| NO. | DATE |
| 1 | 07/14/17 CONSTRUCTION DOCUMENTS |
| 2 | 08/07/17 FINAL CONSTR. DOCUMENTS |

| REVISIONS | | |
|-----------|----------|------------------------|
| NO. | DATE | DESCRIPTION |
| 1A | AS NOTED | CONSTR. DOC. REVISIONS |
| 2A | AS NOTED | ADDENDUM 1 |
| 2B | 08/24/17 | ADDENDUM 2 |
| 2C | 08/31/17 | ADDENDUM 3 |
| 2D | 09/08/17 | ADDENDUM 6 |

ARCHITECT
 NO. LICENSE NO. 2140130000

 DATE: 08/07/2017

WILLIAM PATTERSON UNIVERSITY NEW RESIDENCE HALL
 WAYNE, NEW JERSEY

CONSTRUCTION DOCUMENTS
 (ISSUED FOR CONSTRUCTION)

DATE: 2017.08.07
 SCALE: AS NOTED
 DRAWN BY:
 CHECKED BY:

SHEET TITLE:
WALL SECTIONS

DRAWING NO.:
A-603
 CCH PROJECT NO.: 1932