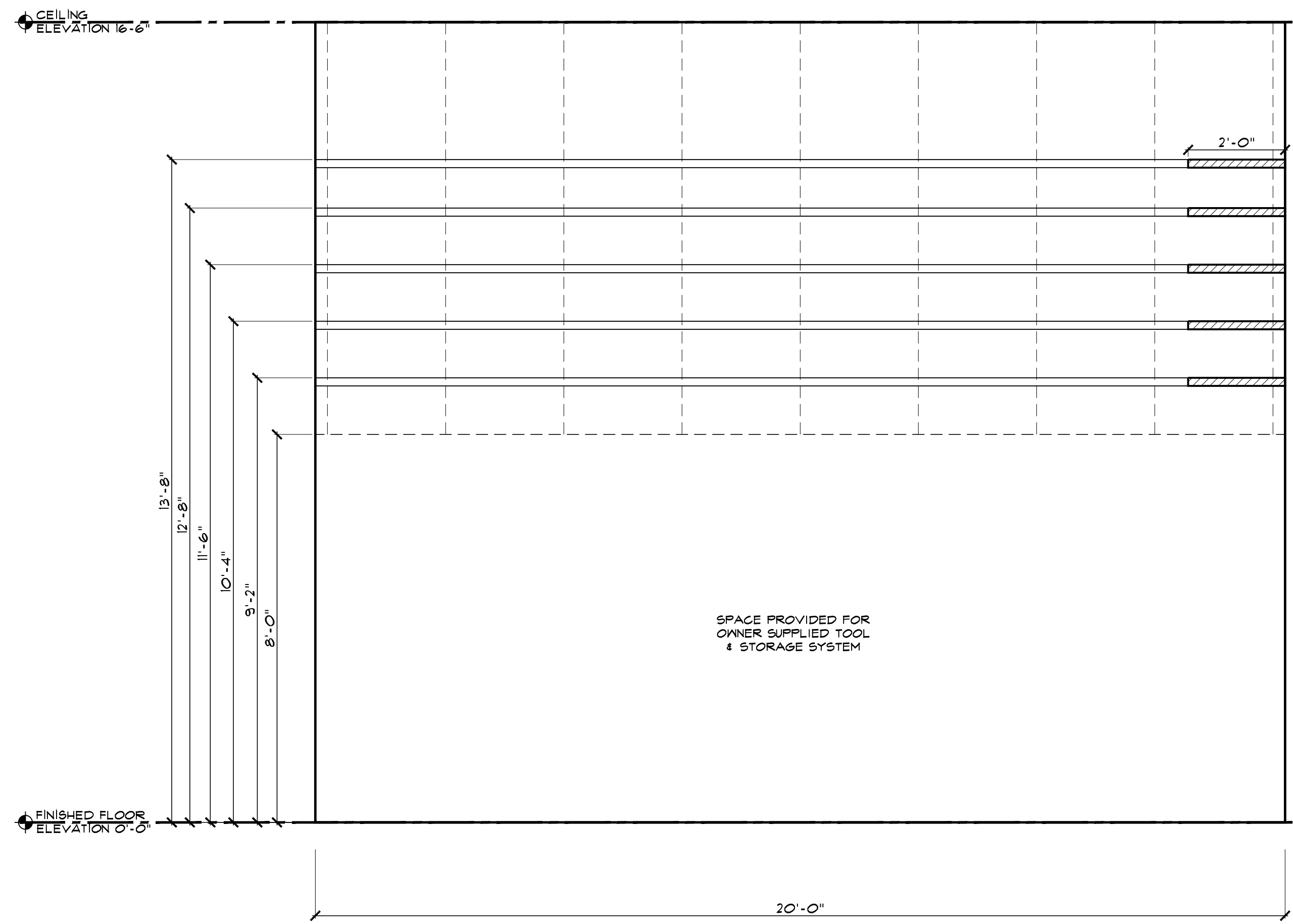
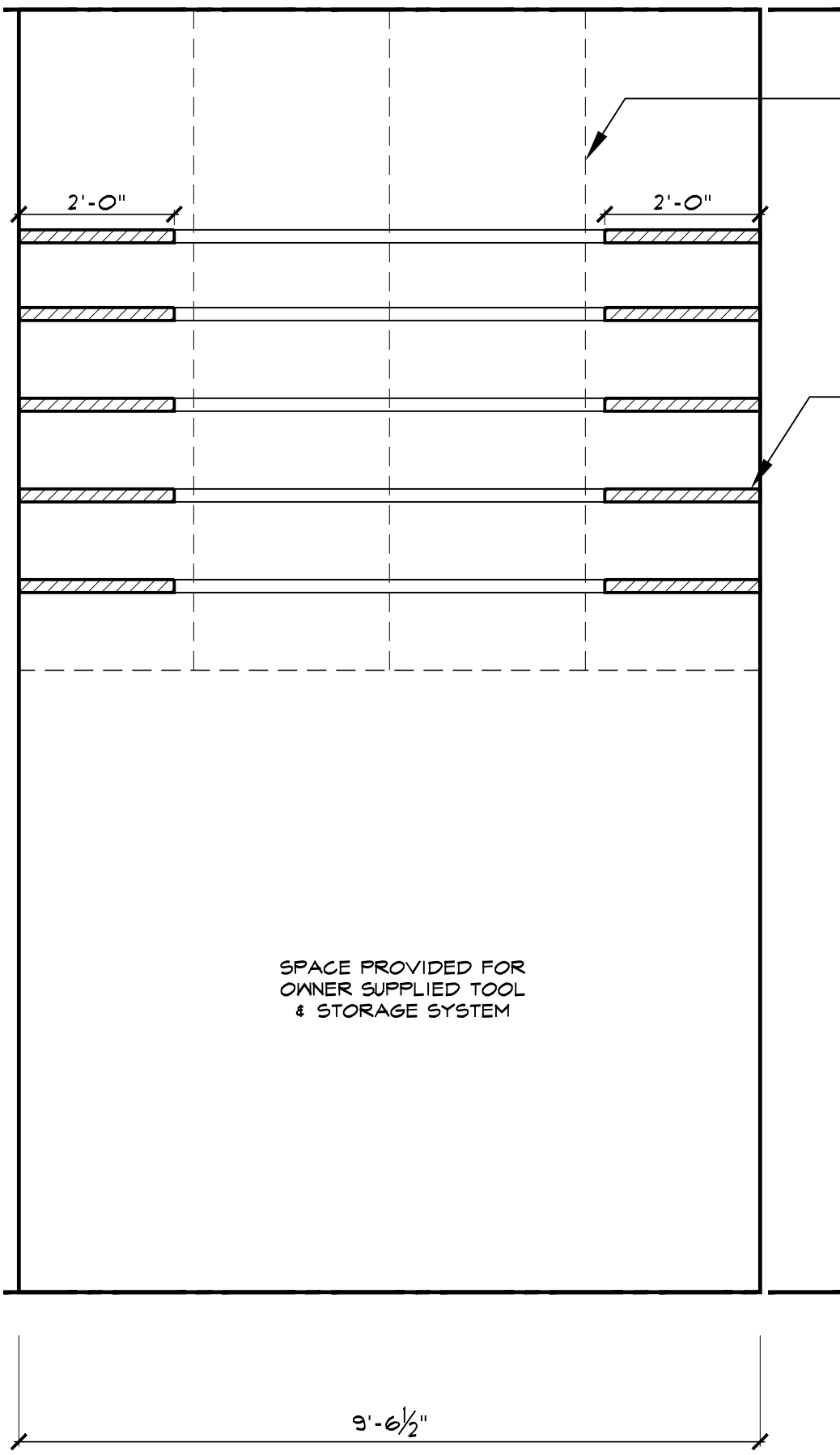


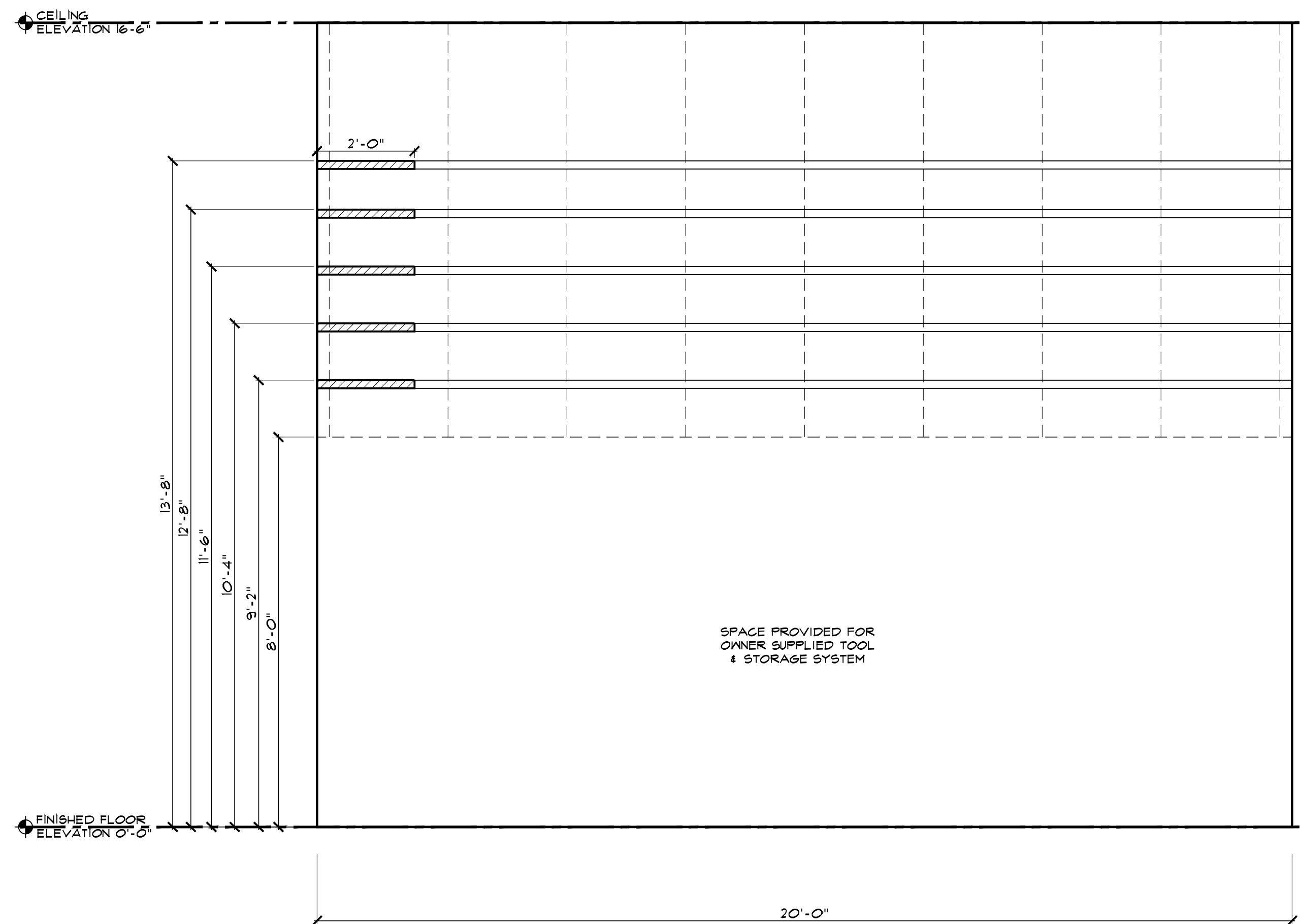
date	revision



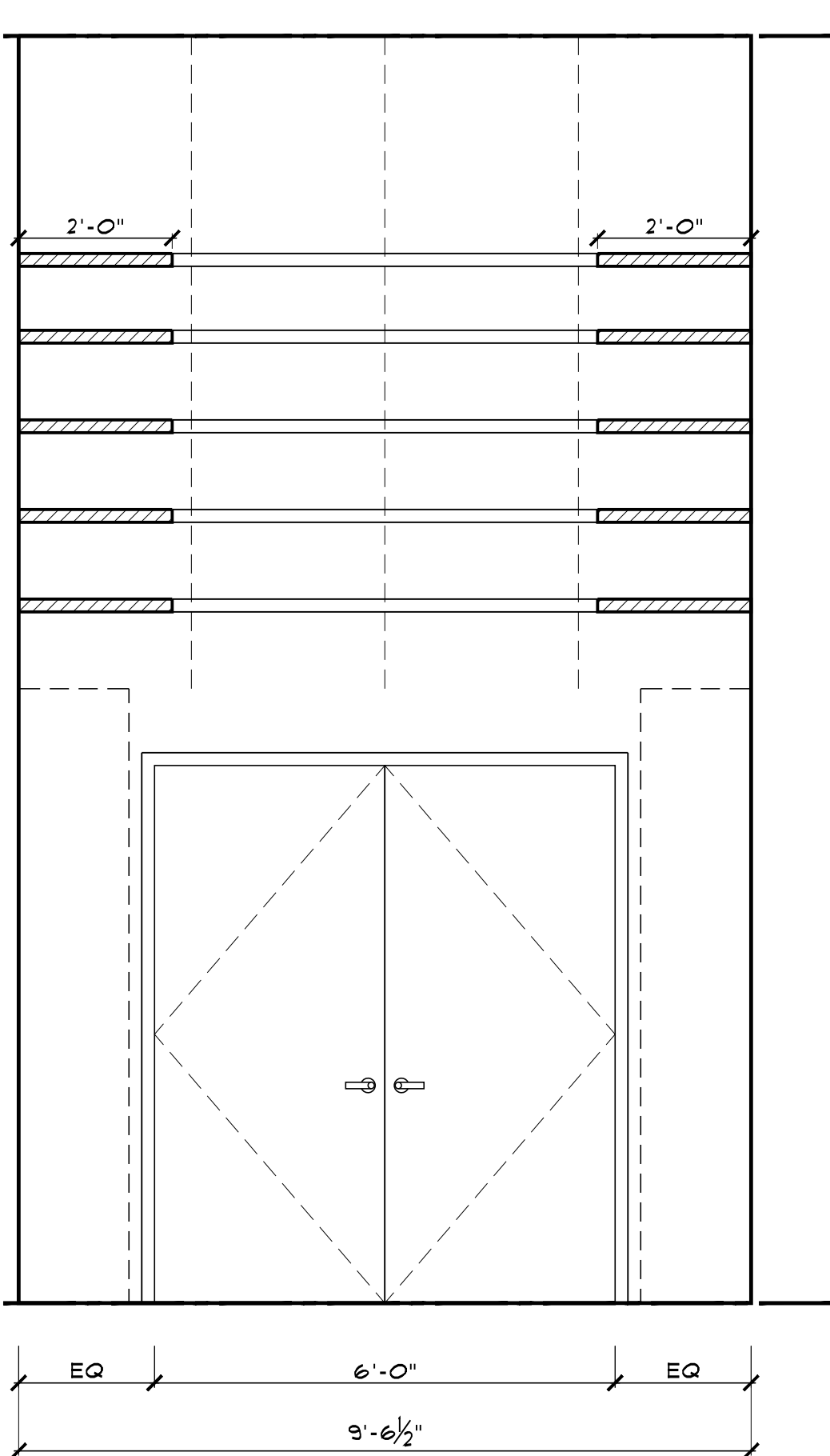
1 STORAGE ELEVATION
SCALE: 1/2" = 1'-0"



2 STORAGE ELEVATION
SCALE: 1/2" = 1'-0"



3 STORAGE ELEVATION
SCALE: 1/2" = 1'-0"



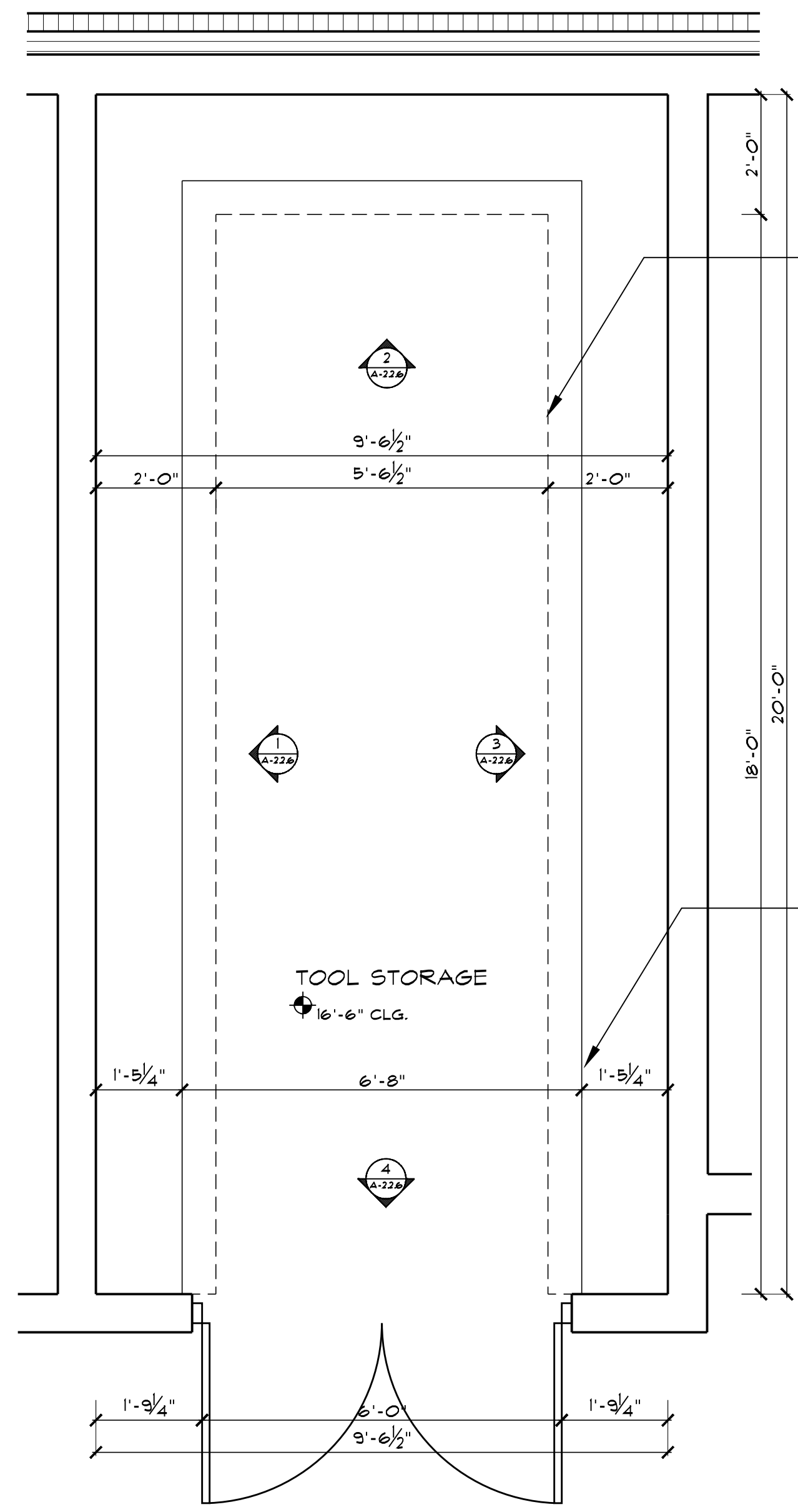
4 STORAGE ELEVATION
SCALE: 1/2" = 1'-0"

KNAPE & VOGT 81 SERIES
STANDARD SHELVING TRACK
WITH 186/181 SERIES
ADJUSTABLE BRACKETS, 304
GRADE STAINLESS STEEL,
PERMANENTLY FASTENED TO
WALL STUDS, INSTALLED TO
FULL HEIGHT OF SPACE, TO
WITHSTAND 20 LBS PER
LINEAR FOOT MIN.

PLYWOOD UTILITY
ADJUSTABLE
SHELVING 3/8" WITH
HARDWOOD EDGE,
FINISHED TO MATCH
WILSONART 820BK-16
(FAVN CYPRESS)
COLORING.

BLOCKING NOTE
PROVIDE 2X OR (2) LAYERS 3/4" PLYWOOD (MIN.)
BLOCKING IN ALL METAL STUD WALLS TO
SUPPORT MILLWORK

SHOP DRAWINGS & SAMPLES
SUBMIT TO ARCHITECT FOR REVIEW & APPROVAL
PRIOR TO ORDERING & FABRICATION



5 STORAGE PLAN #112
SCALE: 1/2" = 1'-0"