

1	01/27/09	ADDENDUM NO. 5	CRC
No.	Date	Revision	Approved

ENGINEERING DEPARTMENT

**JOURNAL
SQUARE
TRANSPORTATION
CENTER**

ELECTRICAL

Title
**BUS TERMINAL
ESCALATOR REPLACEMENT**

**CONCOURSE LEVEL
ELECTRICAL PLAN**

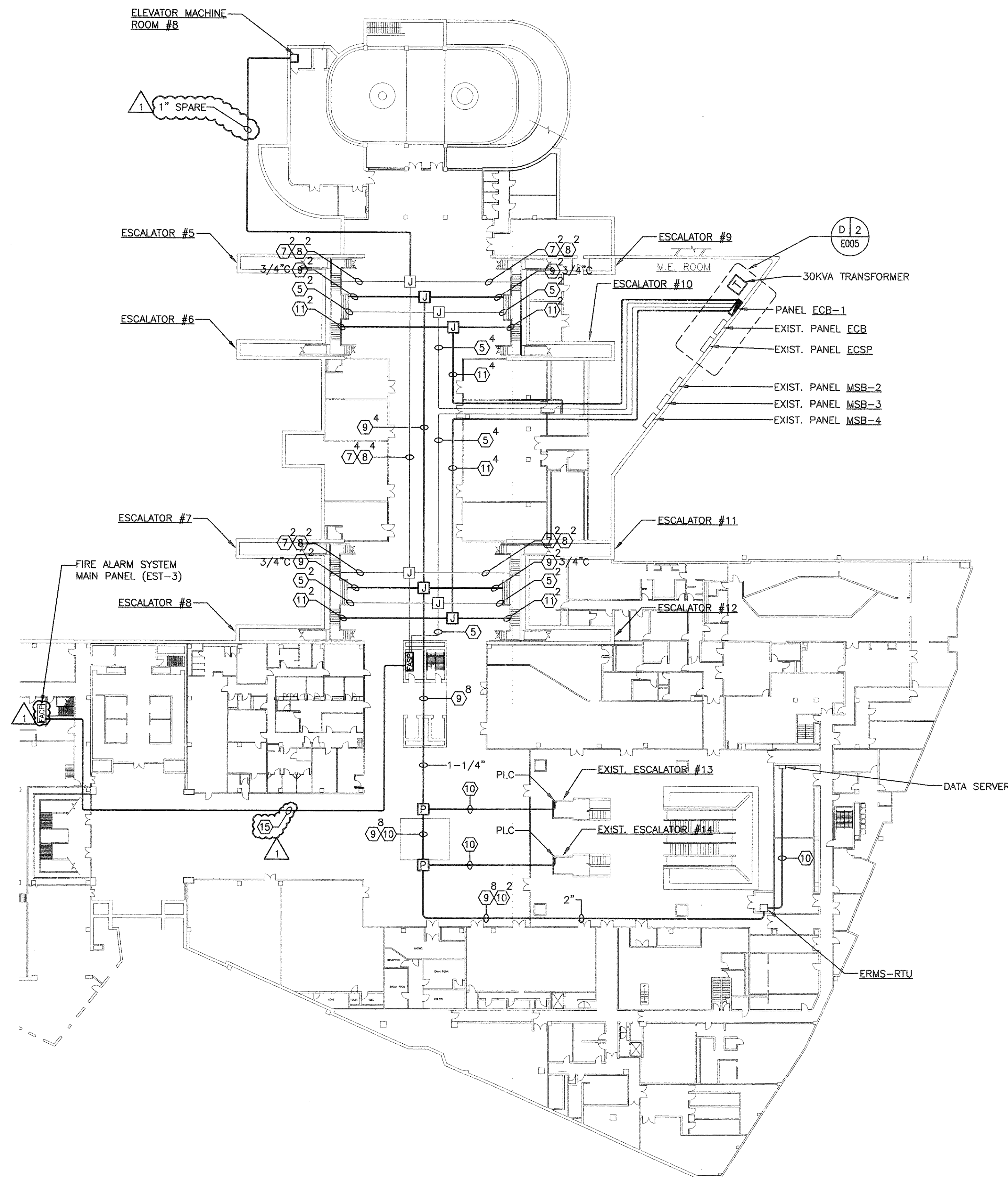
This drawing subject to conditions in contract. All inventions, ideas, designs and methods herein are reserved to Port Authority and may not be used without its written consent.
All recipients of Contract documents, including bidders and those who do not bid and their prospective subcontractors and suppliers who may receive all or a part of the Contract documents or copies thereof, shall make every effort to ensure the secure and appropriate disposal of the Contract documents to prevent further disclosure of the information contained in the documents. Secure and appropriate disposal includes methods of document destruction such as shredding or arrangements with release handlers that ensure that third persons will not have access to the document's contents either before, during, or after disposal. Documents may also be returned for disposal purposes to the Contract Desk on the 3rd Floor, 3 Gateway Center, Newark NJ 07102 or the office of the Director of Procurement, One Madison Avenue, 7th Floor, New York NY 10010.

T.GILLEN A.CONCHADO G.CAMPANELLA
Designed by Drawn by Checked by

Date 11/17/2008

Contract Number **PAT-214.004**

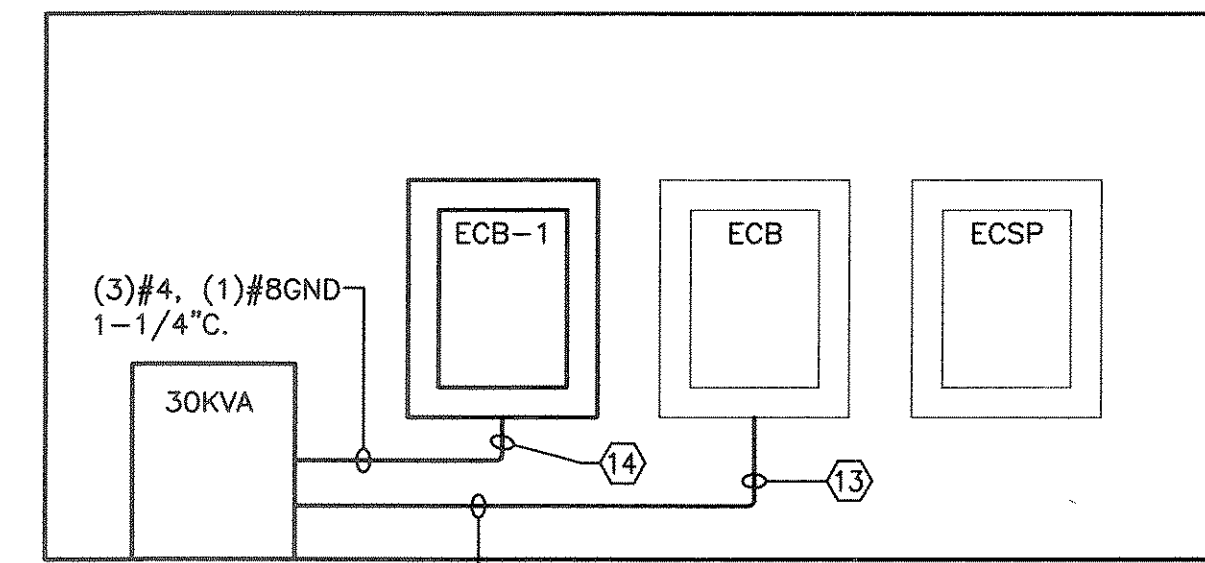
Drawing Number **E005**
PID# 07957000



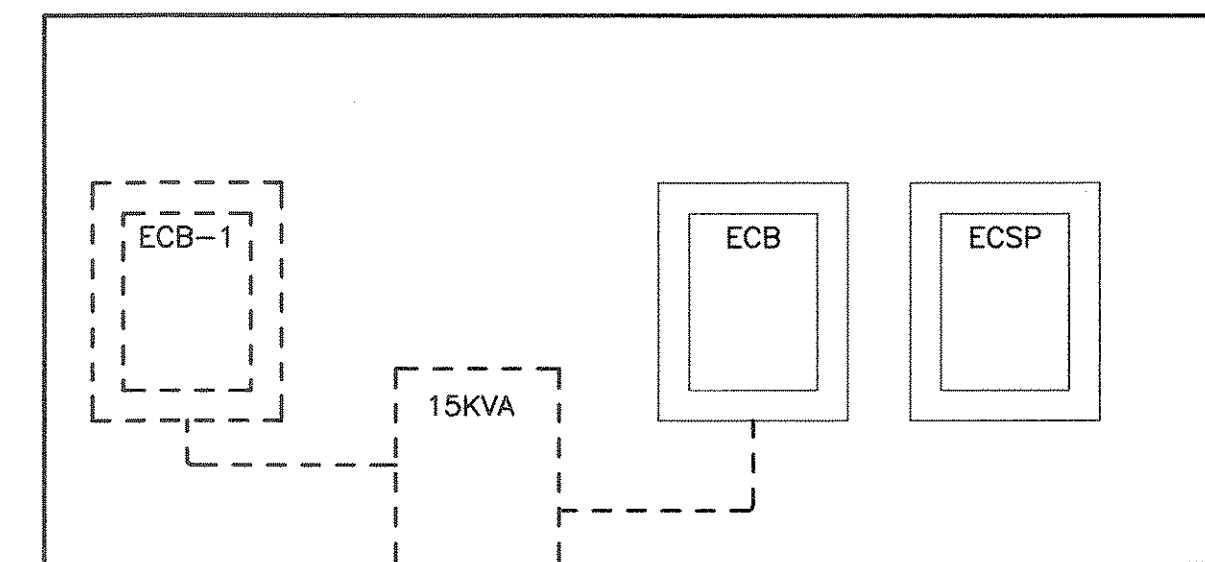
P 1
E005
CONCOURSE LEVEL ELECTRICAL PLAN
SCALE IN FEET

NOTES:

- FOR LEGEND, ABBREVIATIONS, AND GENERAL NOTES REFER TO CONTRACT DRAWING E001.
- CONDUIT 5 SHALL BE REUSED CONDUIT FROM PANEL ECB-1 TO ESCALATOR TOP PIT BOXES. THE CONDUIT SHALL BE REUSED FOR THE CONDUCTORS TO THE ELECTRICAL CONTROL ROOM AS INDICATED. REFER TO CONTRACT DRAWING E004.
- CONDUIT 9 IS FIBER CONNECTION BETWEEN ESCALATOR CONTROL ROOMS FOR ESCALATORS 5 THRU 12 AND ESCALATOR REMOTE MONITORING SYSTEM.
- CONDUIT 11 IS EXPOSED/EMBEDDED CONDUIT FROM PANEL ECB-1 TO ESCALATORS 5 THRU 12 ELECTRICAL CONTROL ROOMS FOR A/C UNITS.
- CONDUIT 10 IS FOR ESCALATOR #13 AND #14 CONNECTION TO ESCALATOR REMOTE MONITORING SYSTEM PANEL AND INTERCONNECTION OF ESCALATOR REMOTE MONITORING PANEL AND DATA SERVER.
- 40A 3P BREAKER AND FEEDERS IN EXISTING PANEL ECB TO SUPPLY PRIMARY OF 30 KVA TRANSFORMER AND SECONDARY FEEDERS FROM 30 KVA TRANSFORMER TO PANEL ECP-1.
- PANEL ECB-1. SEE CONTRACT DRAWING E010 FOR PANEL SCHEDULE.
- PANEL ECB-1 KAIC RATING SHALL MEET EXISTING ELECTRICAL SYSTEM FAULT CURRENT REQUIREMENTS. (10KAIC)
- FIELD VERIFY LOCATION OF ESCALATOR FACP SUB PANEL AND FACP PANEL.
- SEE CONTRACT DRAWING E004 FOR CABLE AND CONDUIT SCHEDULE.
- FIELD VERIFY LOCATION OF FIRE ALARM SUB PANEL. (FASP)
- ALL CONDUIT SHOWN IN THIS DRAWING IS EXPOSED LOCATED ABOVE CONCOURSE CEILING.
- REFER TO CONTRACT DRAWING E002 FOR CONDUCTORS TO BE REMOVED FROM EXISTING CONDUITS. REFER TO ELECTRICAL REMOVAL NOTES ON CONTRACT DRAWING E002.
- CONDUIT NUMBERS 7 AND 8 ARE EXISTING FROM LIMIT OF ESCALATOR CONSTRUCTION TO CONTRACTOR INSTALLED PANEL FASP ON CONCOURSE LEVEL.
- CONDUIT 15 IS FOR CABLE TYPE CAT. 5E BETWEEN EXISTING MAIN FIRE PANEL FACP AND CONTRACTOR INSTALLED PANEL FASP.



D 2
E005
DISTRIBUTION PANEL ELEVATION
SCALE IN FEET



D 3
E005
DISTRIBUTION PANEL REMOVAL ELEVATION
SCALE IN FEET