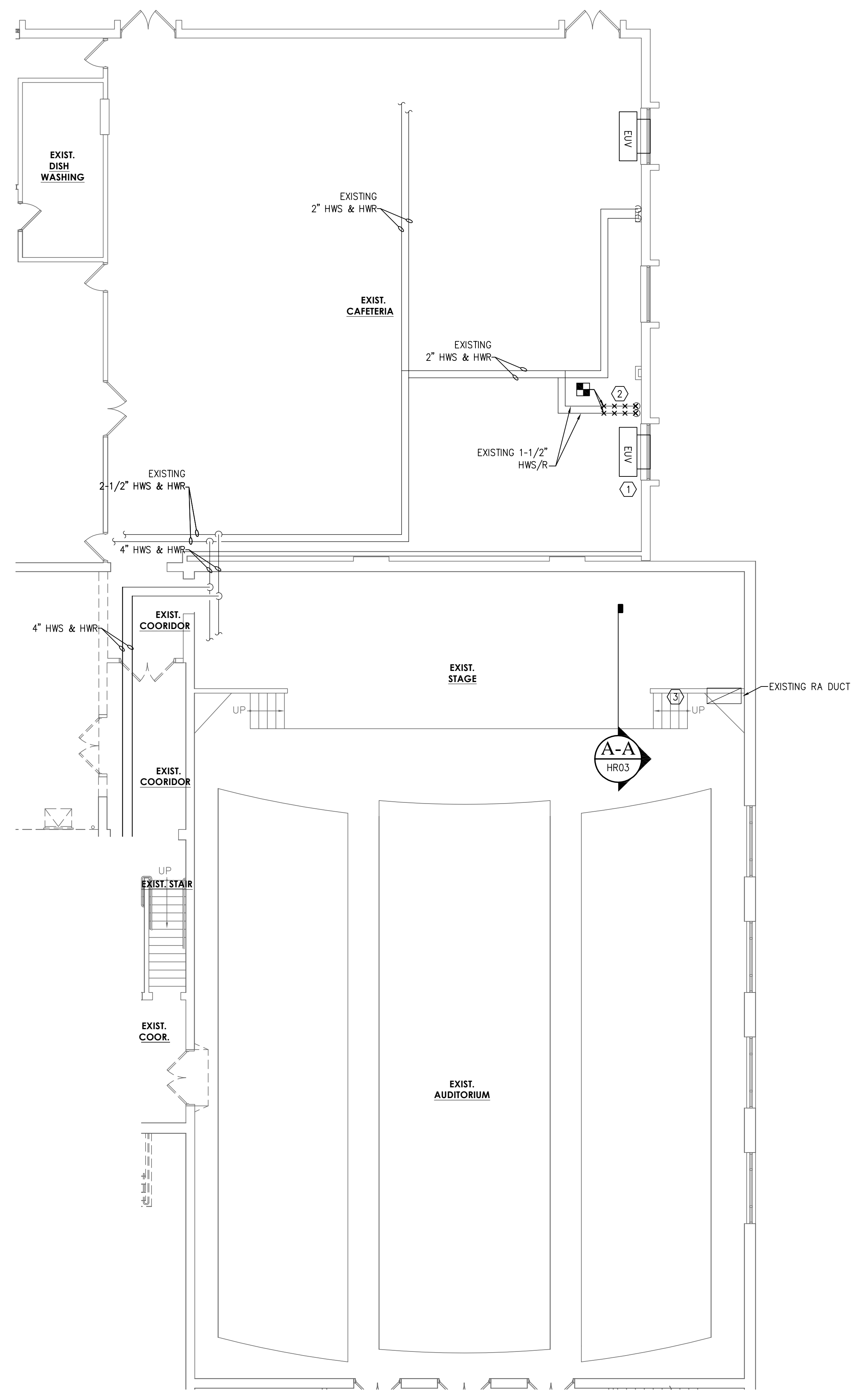


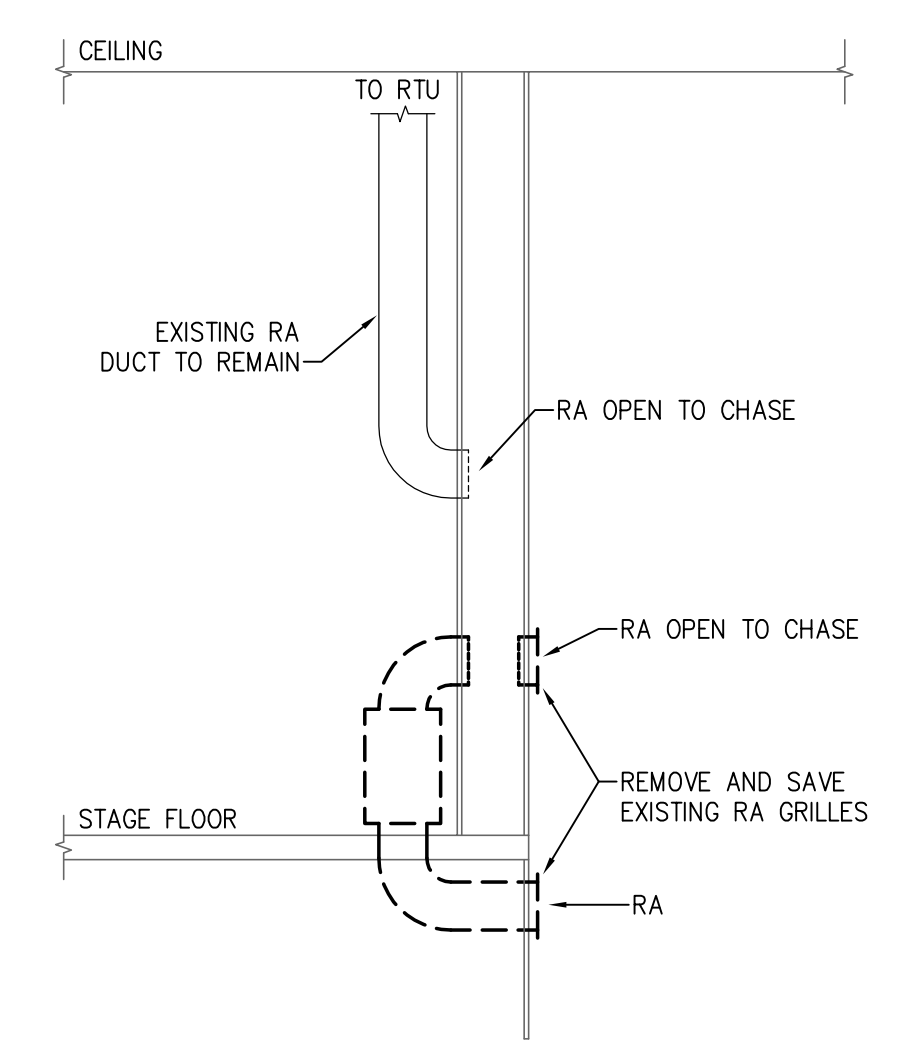
A B C D E F G H J K L M N O

1
2
3
4
5
6
7
8
9
10
11

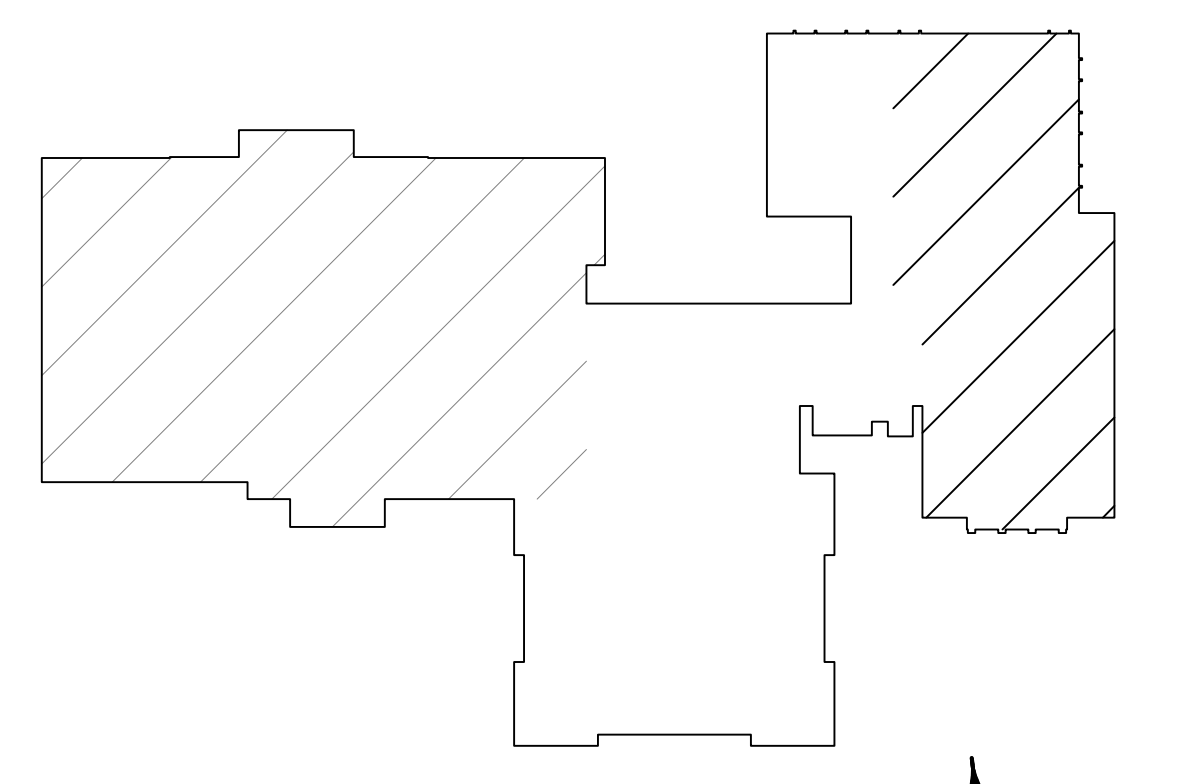


1
HR03
HVAC GROUND FLOOR REMOVALS PLAN
1/8" = 1'-0"

- KEYED NOTES**
- 1 REMOVE UNIT VENTILATOR AND ASSOCIATED LOUVER, DUCTWORK, WALL SENSOR, CONTROL WIRING, AND HOT WATER PIPING.
 - 2 REMOVE HWS/HWR PIPING, ASSOCIATED SUPPORTS, AND HANGERS.
 - 3 REMOVE EXISTING STEAM AND CONDENSATE PIPING IN ITS ENTIRETY IN THIS AREA. REMOVE ALL SUPPORTS AND ACCESSORIES.



1
HR03
SECTION A-A
NTS



KEY PLAN
N.T.S.

NJ Certificate of Authorization	
Eng'r. No.	24027937500
Arch. No.	21AC09912400
Date	01/15/2018
Checked	
Drawn	
KENNETH H. KARLE, R.A. THE REGISTERED ARCHITECT License No. NJ21A0090600	
Revisions:	
LAN ASSOCIATES engineering • planning • architecture • surveying • d 445 GODWIN AVENUE, MIDLAND PARK, N.J. 07432 (201)447-6400	
HVAC GROUND FLOOR REMOVALS PLAN ADDITION TO WOODBRIDGE MIDDLE SCHOOL WOODBRIDGE BOE 525 BARRON AVENUE WOODBRIDGE, NJ 07095	
Job No. 2.20211.07	
File No. -	
HR03	