

FOUNDATION PLAN
 1/8" = 1'-0"
 ELEVATION TOP OF FINISHED FLOOR SLAB + 530.61' REFERRED TO AS DATUM
 EL. 0'-0" UNLESS OTHERWISE NOTED THIS << >> ON PLAN.
 FLOOR SLAB: 4" CONC. SLAB + 6 x 6-W 1/4 x W 1/4 WUF ON A VAPOR BARRIER
 OVER 6" MIN. DRAINAGE FILL UNLESS OTHERWISE NOTED.
 ELEVATION BOTTOM OF FOOTINGS NOTED THIS (-) ON PLAN BELOW
 FINISHED FLOOR DATUM EL. 0'-0".
 C.J. - INDICATES SLAB CONSTRUCTION OR CONTROL JOINT.
 S.L.D. - INDICATES SLAB DEPRESSION NOTED THIS () ON PLAN FROM TOP OF FLOOR
 SLAB - SEE ARCH. DRGS. FOR LOCATION & EXTENT.
 [B.E.] - INDICATES BOTTOM OF BASE PLATE ABOVE OR BELOW DATUM.
 ANY PENETRATIONS IN SLAB FROM ALL TRADES TO BE FILLED
 WITH POLYURETHANE CAULK.

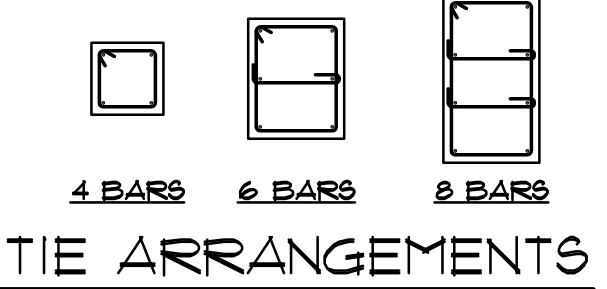
FOOTING SCHEDULE

MARK	SIZE	REINFORCEMENT
F30	3'-0" x 3'-0" x 12"	(4) - #4 E.W. BOTT.
F40	4'-0" x 4'-0" x 12"	(4) - #5 E.W. BOTT.
F50	5'-0" x 5'-0" x 14"	(5) - #6 E.W. BOTT.
F60	6'-0" x 6'-0" x 16"	(7) - #6 E.W. BOTT.
F70	7'-0" x 7'-0" x 18"	(7) - #7 E.W. BOTT.
F80	8'-0" x 8'-0" x 20"	(9) - #7 E.W. BOTT.
F90	9'-0" x 9'-0" x 22"	(10) - #7 E.W. BOTT.
F100	10'-0" x 10'-0" x 24"	(11) - #8 E.W. BOTT.

PIER SCHEDULE

MARK	SIZE	REINFORCEMENT	REMARKS
P1	32" x 20"	(8) - #6 VERT.	
P2	24" x 20"	(6) - #6 VERT.	
P3	20" x 20"	(6) - #6 VERT.	

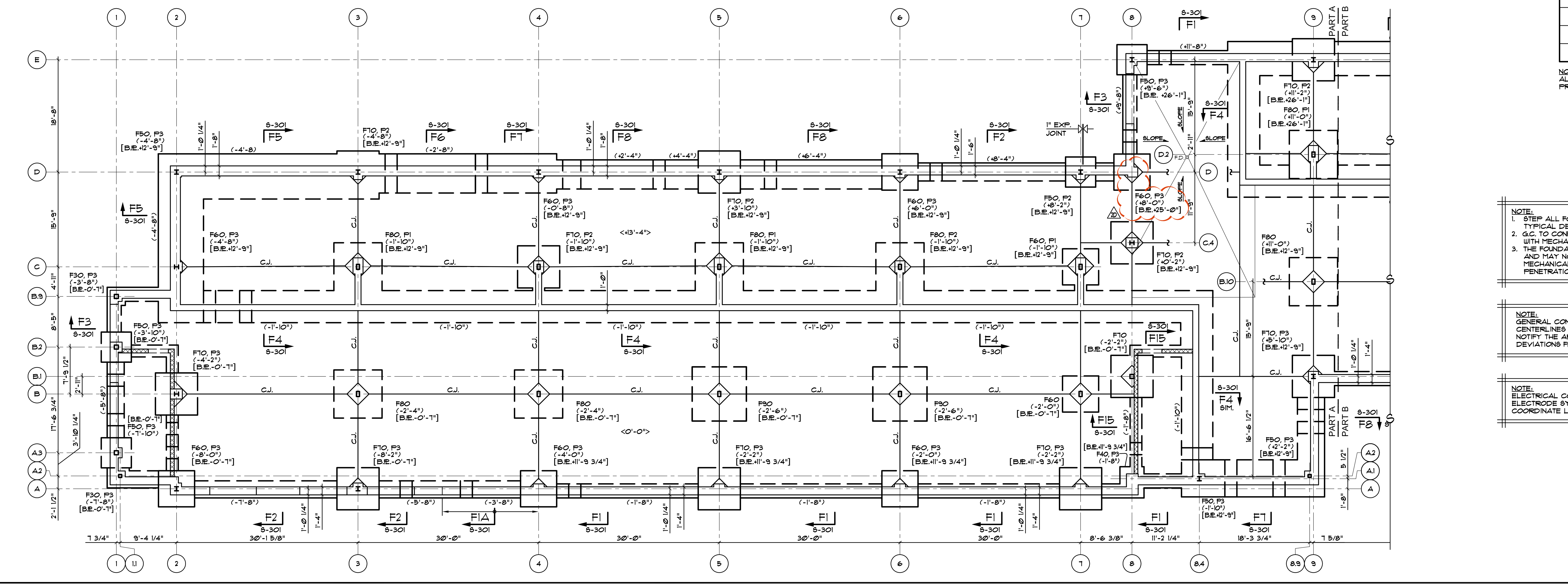
NOTE:
 ALL PIERS TO HAVE #3 TIES @ 12" o.c. (TYPICAL).
 PROVIDE BRICKSHELF AS REQUIRED. SEE TYPICAL
 BRICKSHELF DETAIL ON DRAWING S-610.



NOTE:
 1. STEP ALL FOOTINGS AT ALL PIPES & CONDUITS, SEE
 TYPICAL DETAIL.
 2. G.C. TO CONFIRM ALL LOCATIONS AND INVERTS OF PIPES
 WITH MECHANICAL & ELECTRICAL CONTRACTORS.
 3. THE FOUNDATION DRAWINGS SHOW ONLY GENERAL LOCATIONS
 AND MAY NOT INCLUDE ALL PENETRATIONS. G.C. TO SEE
 MECHANICAL DRAWINGS FOR FULL EXTENT OF PIPE
 PENETRATIONS.

NOTE:
 GENERAL CONTRACTOR TO LAYOUT DIMENSIONS OF COLUMN
 CENTERLINES AT THE BEGINNING OF THE PROJECT AND IS TO
 NOTIFY THE ARCHITECT AND STEEL CONTRACTOR OF ANY
 DEVIATIONS FROM THE CONTRACT DRAWINGS.

NOTE:
 ELECTRICAL CONTRACTOR TO PROVIDE GROUNDING
 ELECTRODE SYSTEM AS REQUIRED BY NEC SECTION 250-52.2.
 COORDINATE LOCATION WITH GENERAL CONTRACTOR.



Harrison & Hamnett, P.C.
 Consulting Engineers
 40 Knowles Street, Pennington, New Jersey 08534
 Ph: 609-818-1808 Fax: 609-818-1809
 JOHN N. HARRISON N.A.S.P.E. #31198 DATE

Clarke Catton Hintz
 Architecture
 Planning
 Landscape Architecture
 100 Barrack Street, Trenton, NJ 08638
 Tel: (609) 833-8383, fax: (609) 833-0444
 www.clarkecattonhintz.com
 Drawings Copyright ©2016 Clarke Catton Hintz, P.C.

OWNER: WILLIAM PATTERSON UNIVERSITY
 300 POMPTON RD.
 WINNE, NJ 07470
 (973) 723-2000
 SITE / CIVIL / GEOTECHNICAL:
 LANGAN
 300 KIMBALL DRIVE
 PASSAIC, NJ 07054
 (973) 560-4900
 STRUCTURAL:
 HARRISON & HAMNETT
 40 KNOWLES STREET
 PENNINGTON, NJ 08534
 (609) 818-1808
 MECHANICAL/ELECTRICAL/PLUMBING:
 FIRE PROTECTION
 PARTNER ENGINEERING AND SCIENCE,
 INC.
 611 INDUSTRIAL WAY WEST
 EASTONTOWN, NJ 07724
 (321) 380-1700
 AV/IT & SECURITY
 R.S. VANDERWEIL ENGINEERS, LLP
 101 GROVERS MILL ROAD
 QUAKERTOWN EXECUTIVE CENTER
 LAWRENCEVILLE, NJ 08648
 (609) 609-7862, 2727

SUBMISSIONS

NO.	DATE	DESCRIPTION
1	07/14/17	CONSTRUCTION DOCUMENTS
2	08/07/17	FINAL CONSTR. DOCUMENTS

REVISIONS

NO.	DATE	DESCRIPTION
20	09/08/17	ADDENDUM 6

**WILLIAM PATTERSON
 UNIVERSITY
 NEW RESIDENCE
 HALL**
 WAYNE, NEW JERSEY

**CONSTRUCTION
 DOCUMENTS**
 (ISSUED FOR CONSTRUCTION)
 DATE: 2017.08.07
 SCALE: AS NOTED
 DRAWN BY: RC
 CHECKED BY: JNH

SHEET TITLE:
 FOUNDATION PLAN
 DRAWING NO.:
S-101
 CCH PROJECT NO.: 1932