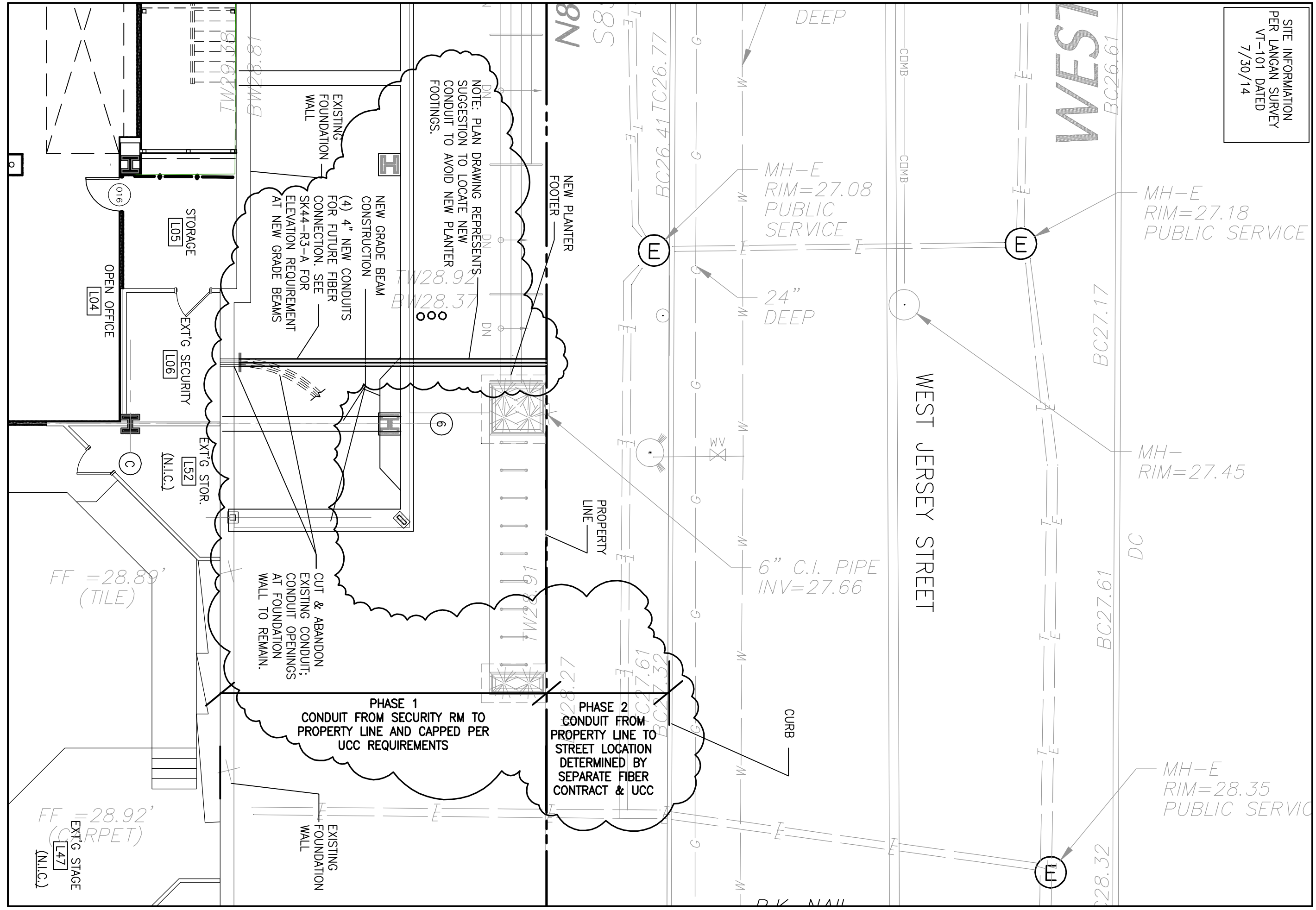


SITE INFORMATION
PER LANGAN SURVEY
VT-101 DATED
7/30/14

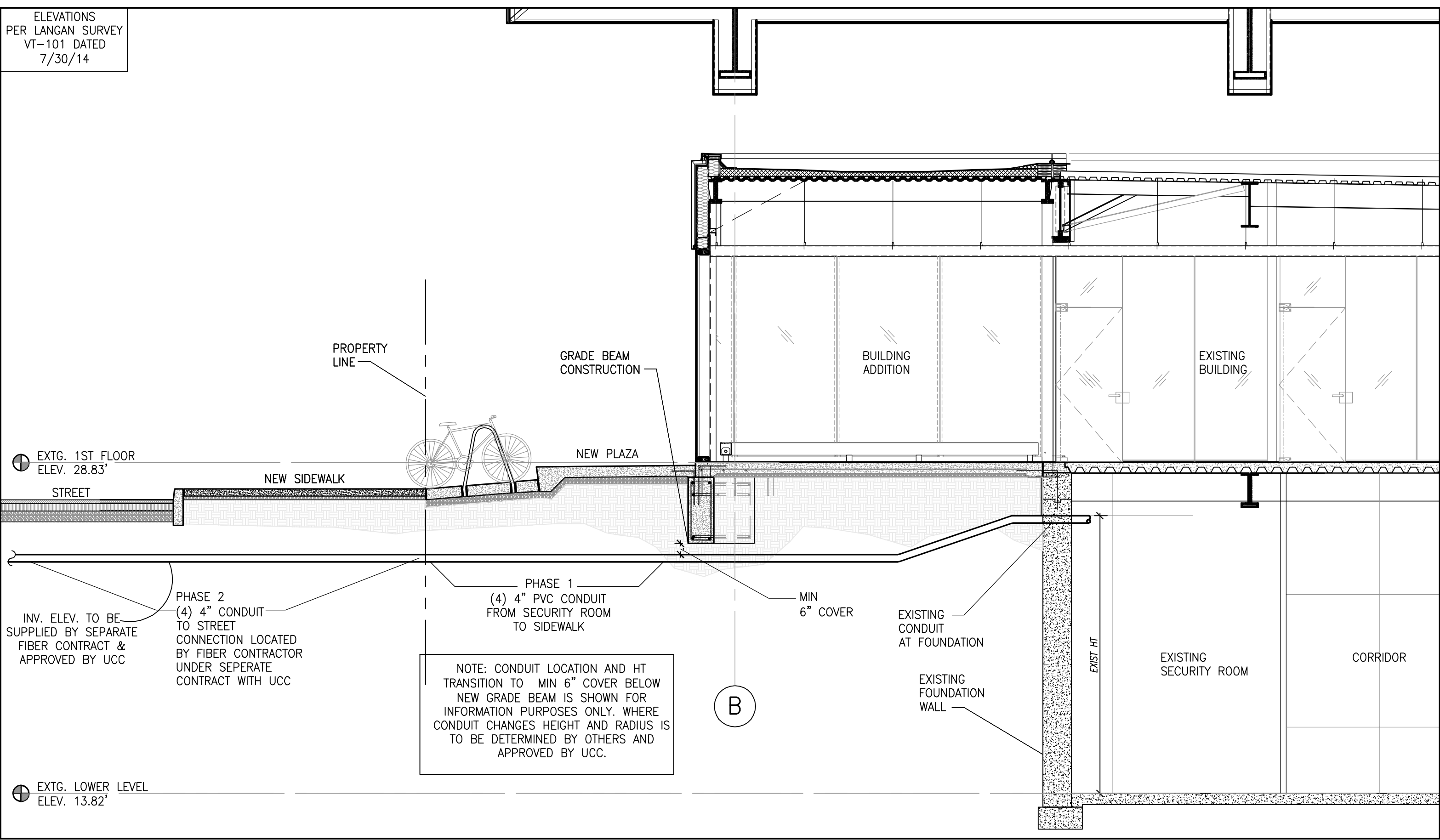


INCOMING DATA SERVICE ROUTING OPTIONS
LOWER LEVEL PLAN

TMG REF DWG : 108813_LLBase.dwg
UNION COUNTY COLLEGE
LESSNER FIRST FLOOR ADDITION &
FIRST FLOOR & LOWER LEVEL
REHABILITATION
12 WEST JERSEY STREET
ELIZABETH, NJ 07202

12-08-2016
Project # 108813
SCALE: 1/8"=1'-0"
SK-44_R4
191 Mill Lane Mountaintop, NJ 07092 p. 908.232.2860 f. 908.232.2945

ELEVATIONS
PER LANGAN SURVEY
VT-101 DATED
7/30/14



EXTG. 1ST FLOOR
ELEV. 28.83'

INV. ELEV. TO BE
SUPPLIED BY SEPARATE
FIBER CONTRACT &
APPROVED BY UCC

EXTG. LOWER LEVEL
ELEV. 13.82'

PHASE 2
(4) 4" CONDUIT
TO STREET
CONNECTION LOCATED
BY FIBER CONTRACTOR
UNDER SEPERATE
CONTRACT WITH UCC

PHASE 1
(4) 4" PVC CONDUIT
FROM SECURITY ROOM
TO SIDEWALK

NOTE: CONDUIT LOCATION AND HT
TRANSITION TO MIN 6" COVER BELOW
NEW GRADE BEAM IS SHOWN FOR
INFORMATION PURPOSES ONLY. WHERE
CONDUIT CHANGES HEIGHT AND RADIUS IS
TO BE DETERMINED BY OTHERS AND
APPROVED BY UCC.

MIN
6" COVER

EXISTING
CONDUIT
AT FOUNDATION

EXISTING
FOUNDATION
WALL

EXIST HT

EXISTING
SECURITY ROOM

CORRIDOR

B

INCOMING DATA CONDUIT SECTION

TMG REF DWG : 108813_Sectionbase01.dwg
**UNION COUNTY COLLEGE
LESSNER FIRST FLOOR ADDITION &
FIRST FLOOR & LOWER LEVEL
REHABILITATION**
12 WEST JERSEY STREET
ELIZABETH, NJ 07202

12-08-2016
Project # 108813

SCALE: 1/4" = 1'-0"

SK-44_R3_A

191 Mill Lane Mountainside, NJ 07092 p.908,232,2880 f.908,232,2845

P:\1050-1099\108813 UC College 1st FL Lessner Build\04_DOCUMENTS\16-4\DWGS\16-4\CONFORMED SET\108813_Sectionbase01.dwg, SK44 R3 A, 12/8/2016 9:57:29 AM